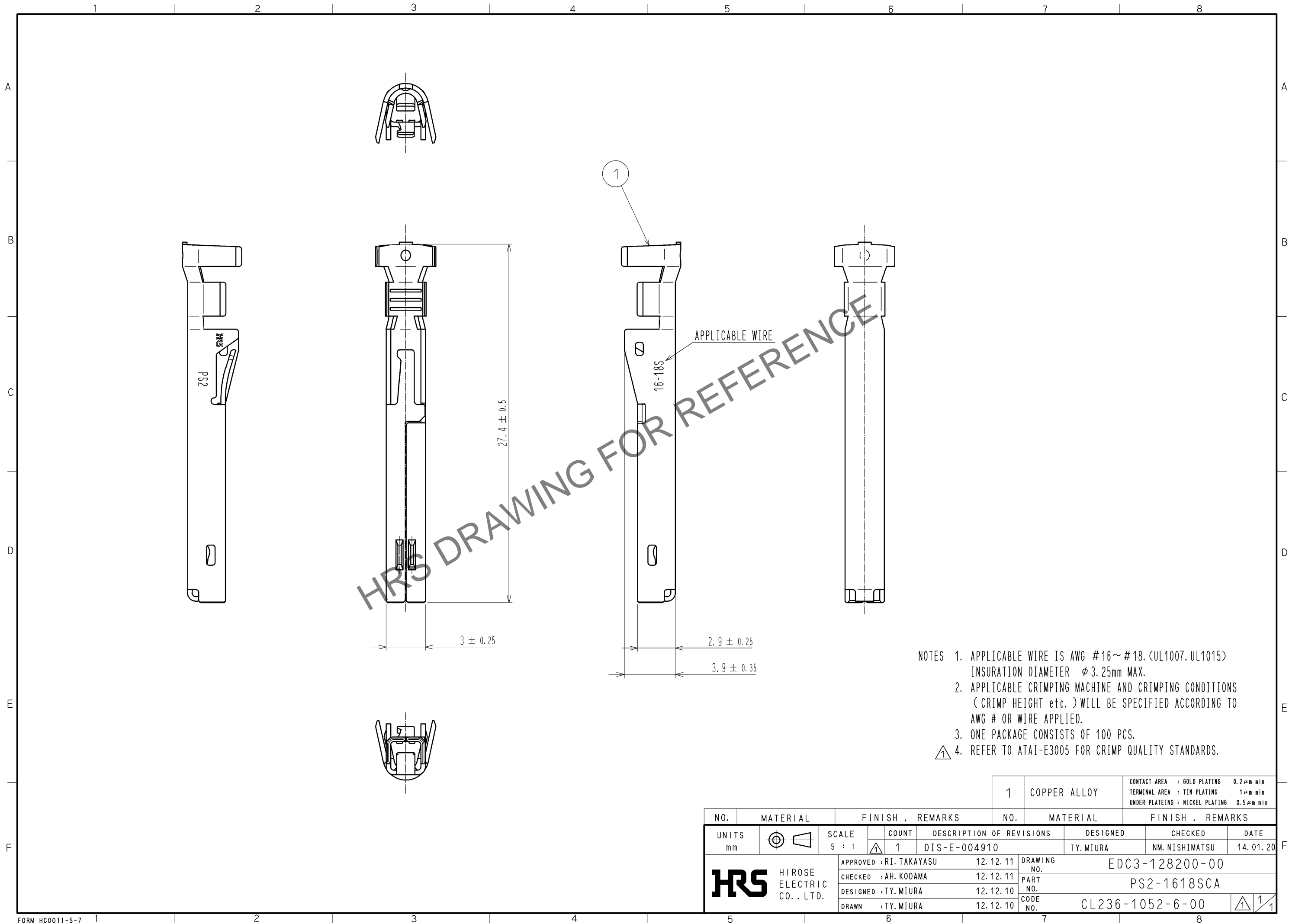


Apr.1.2024 Copyright 2024 HIROSE ELECTRIC CO., LTD. All Rights Reserved.  
In case of consideration for using Automotive equipment / device which demand high reliability, kindly contact our sales window correspondents.



|                           |          |  |                  |                         |              |                          |  |                            |                  |                           |                    |
|---------------------------|----------|--|------------------|-------------------------|--------------|--------------------------|--|----------------------------|------------------|---------------------------|--------------------|
|                           |          |  |                  | 1                       | COPPER ALLOY |                          | CONTACT AREA : GOLD PLATING 0.2μm min<br>TERMINAL AREA : TIN PLATING 1μm min<br>UNDER PLATING : NICKEL PLATING 0.5μm min |                            |                  |                           |                    |
| NO.                       | MATERIAL |  | FINISH , REMARKS |                         |              | NO.                      | MATERIAL   |                            | FINISH , REMARKS |                           |                    |
| UNITS<br>mm               |          |  | SCALE<br>5 : 1   |                         | COUNT<br>1   | DESCRIPTION OF REVISIONS |  | DESIGNED<br>TY. MIURA      |                  | CHECKED<br>NM. NISHIMATSU | DATE<br>14. 01. 20 |
| HIROSE ELECTRIC CO., LTD. |          |  |                  | APPROVED : RI. TAKAYASU |              | 12. 12. 11               |  | DRAWING NO. EDC3-128200-00 |                  |                           |                    |
|                           |          |  |                  | CHECKED : AH. KODAMA    |              | 12. 12. 11               |  | PART NO. PS2-1618SCA       |                  |                           |                    |
|                           |          |  |                  | DESIGNED : TY. MIURA    |              | 12. 12. 10               |  | CODE NO. CL236-1052-6-00   |                  |                           |                    |
|                           |          |  |                  | DRAWN : TY. MIURA       |              | 12. 12. 10               |  | 1/1                        |                  |                           |                    |