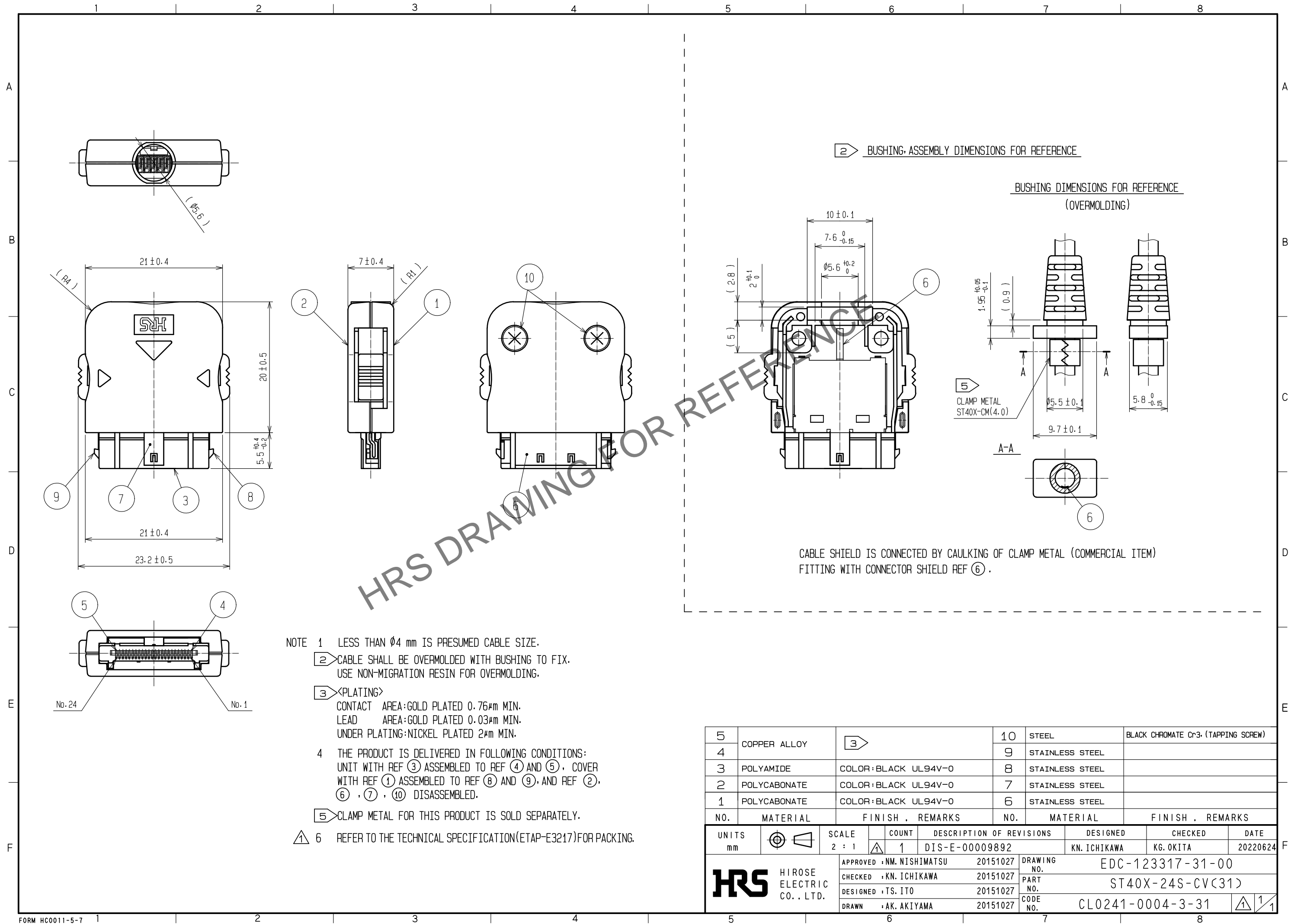


Mar.1.2024 Copyright 2024 HIROSE ELECTRIC CO., LTD. All Rights Reserved.
In case of consideration for using Automotive equipment / device which demand high reliability, kindly contact our sales window correspondents.



| | | | | | |
|-------------|---------------|---------------------------|------------|--|-------------------------------------|
| 5 | COPPER ALLOY | 3 | 10 | STEEL | BLACK CHROMATE Cr3. (TAPPING SCREW) |
| 4 | | | 9 | STAINLESS STEEL | |
| 3 | POLYAMIDE | COLOR:BLACK UL94V-0 | 8 | STAINLESS STEEL | |
| 2 | POLYCARBONATE | COLOR:BLACK UL94V-0 | 7 | STAINLESS STEEL | |
| 1 | POLYCARBONATE | COLOR:BLACK UL94V-0 | 6 | STAINLESS STEEL | |
| NO. | MATERIAL | FINISH . REMARKS | NO. | MATERIAL | FINISH . REMARKS |
| UNITS mm | | SCALE 2 : 1 | COUNT 1 | DESCRIPTION OF REVISIONS DIS-E-00009892 | DESIGNED KN. ICHIKAWA |
| | | APPROVED : NM. NISHIMATSU | 20151027 | DRAWING NO. | EDC-123317-31-00 |
| | | CHECKED : KN. ICHIKAWA | 20151027 | PART NO. | ST40X-24S-CV(31) |
| | | DESIGNED : TS. ITO | 20151027 | CODE NO. | CL0241-0004-3-31 |
| | | DRAWN : AK. AKIYAMA | 20151027 | | |
| | | DATE | 20220624 | | |