

Sep.1.2021 Copyright 2021 HIROSE ELECTRIC CO., LTD. All Rights Reserved.  
In case of consideration for using Automotive equipment / device which demand high reliability, kindly contact our sales window correspondents.

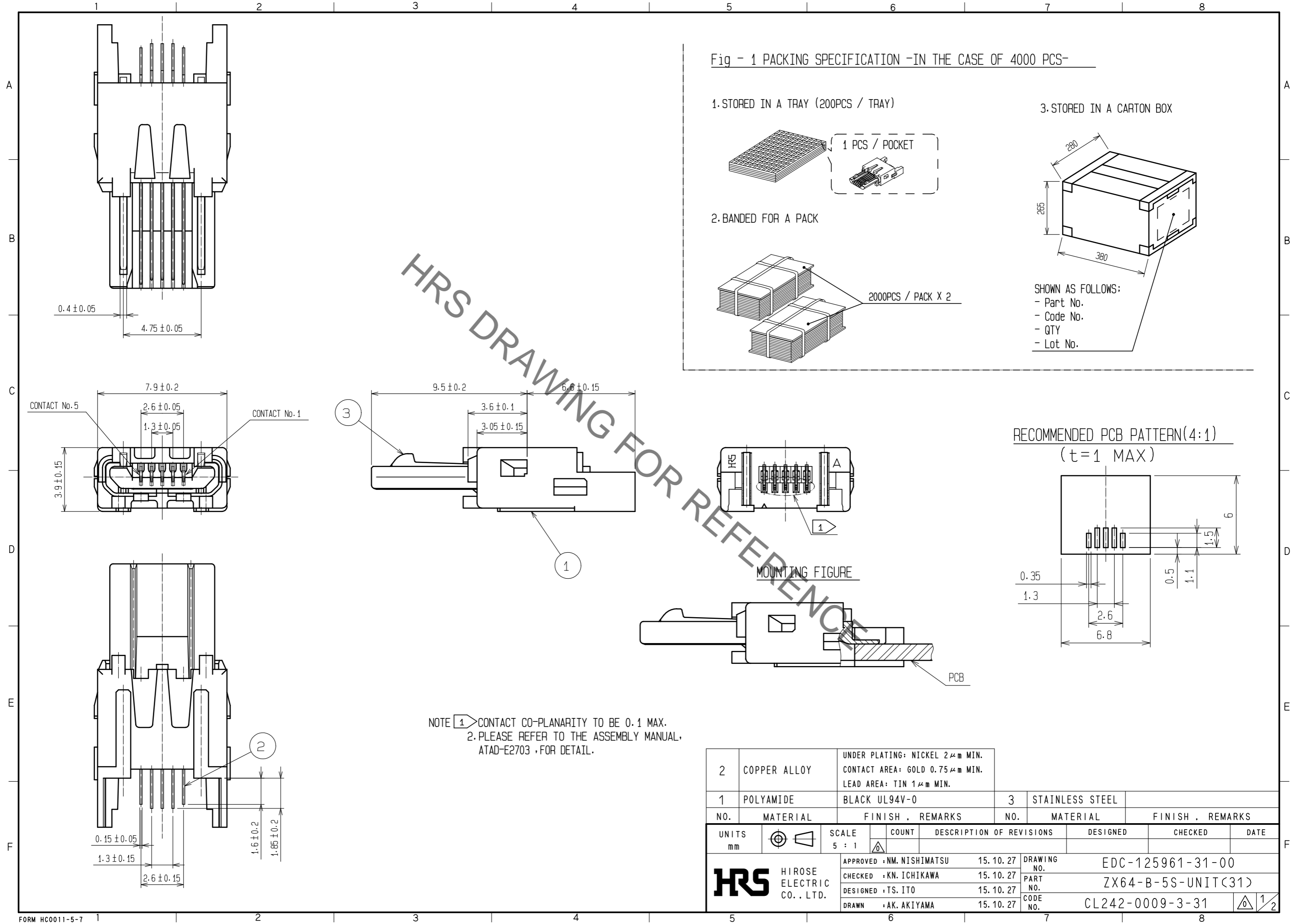
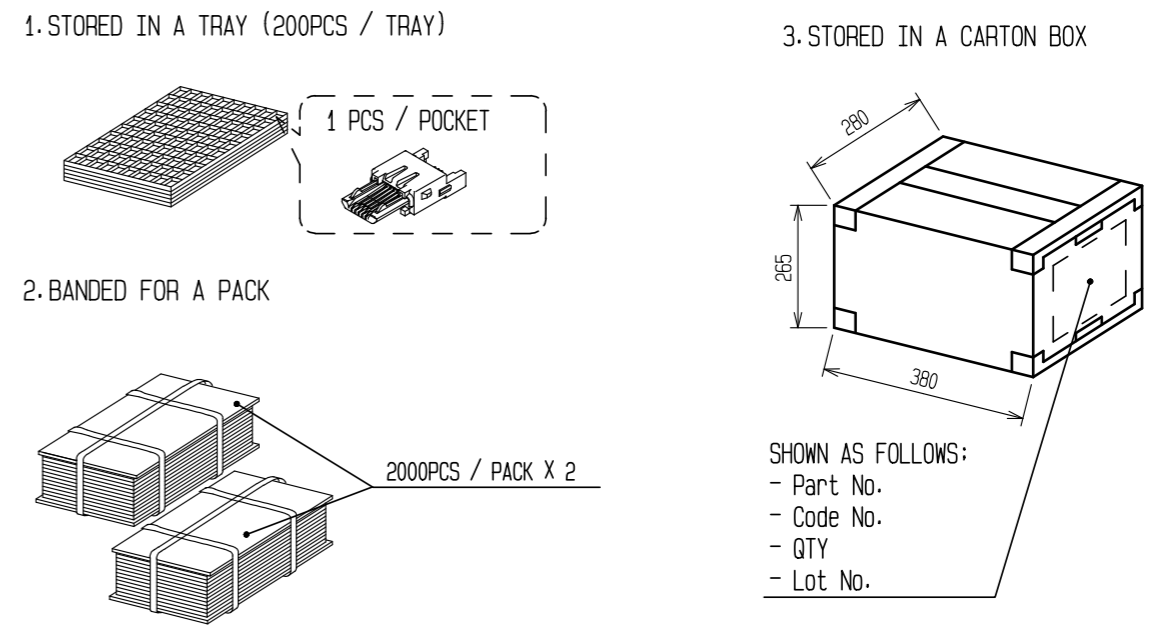


Fig - 1 PACKING SPECIFICATION -IN THE CASE OF 4000 PCS-



NOTE 1 CONTACT CO-PLANARITY TO BE 0.1 MAX.  
2. PLEASE REFER TO THE ASSEMBLY MANUAL, ATAD-E2703, FOR DETAIL.

2	COPPER ALLOY	UNDER PLATING: NICKEL 2μm MIN. CONTACT AREA: GOLD 0.75μm MIN. LEAD AREA: TIN 1μm MIN.	3	STAINLESS STEEL			
1	POLYAMIDE	BLACK UL94V-0					
NO.	MATERIAL	FINISH . REMARKS	NO.	MATERIAL	FINISH . REMARKS		
UNITS	⊙	SCALE	COUNT	DESCRIPTION OF REVISIONS	DESIGNED	CHECKED	DATE
mm		5 : 1	△				
<b>HRS</b> HIROSE ELECTRIC CO., LTD.		APPROVED : NM. NISHIMATSU 15.10.27	DRAWING NO. EDC-125961-31-00				
		CHECKED : KN. ICHIKAWA 15.10.27	PART NO. ZX64-B-5S-UNIT(31)				
		DESIGNED : TS. ITO 15.10.27	CODE NO. CL242-0009-3-31				
		DRAWN : AK. AKIYAMA 15.10.27					

Sep.1.2021 Copyright 2021 HIROSE ELECTRIC CO., LTD. All Rights Reserved.  
In case of consideration for using Automotive equipment / device which demand high reliability, kindly contact our sales window correspondents.

Fig - 2 SHIELDING-PLATE ASSEMBLY

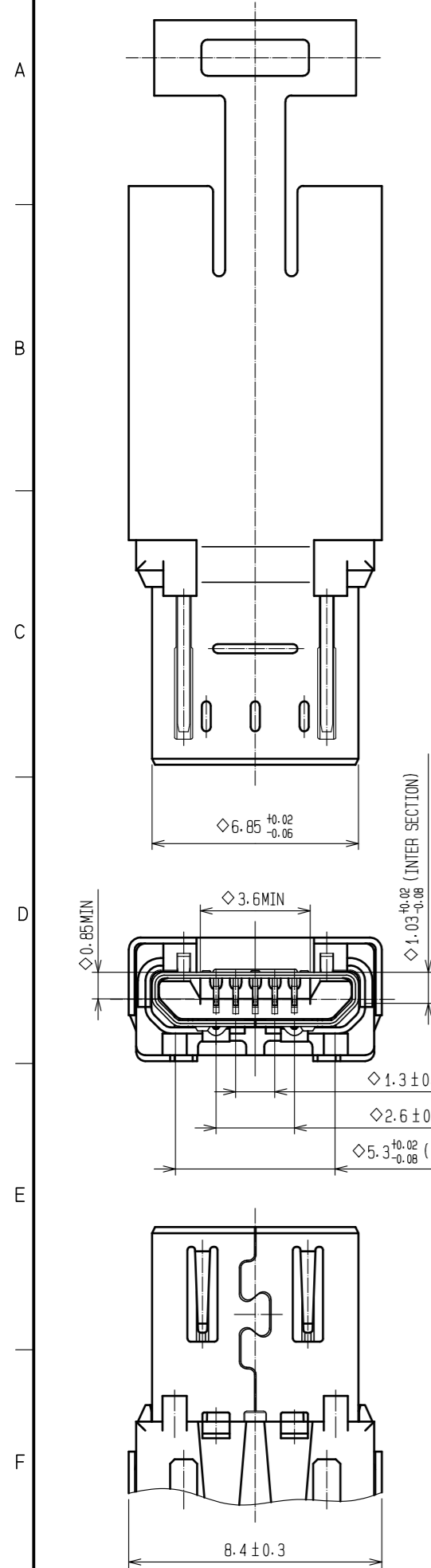
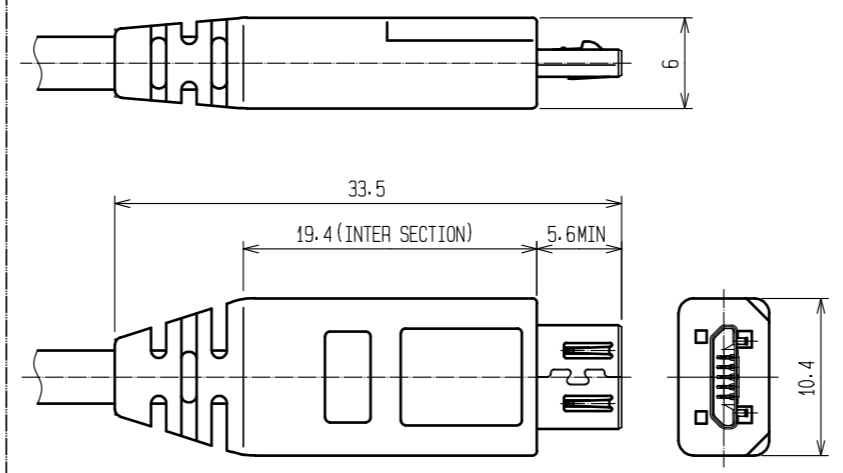
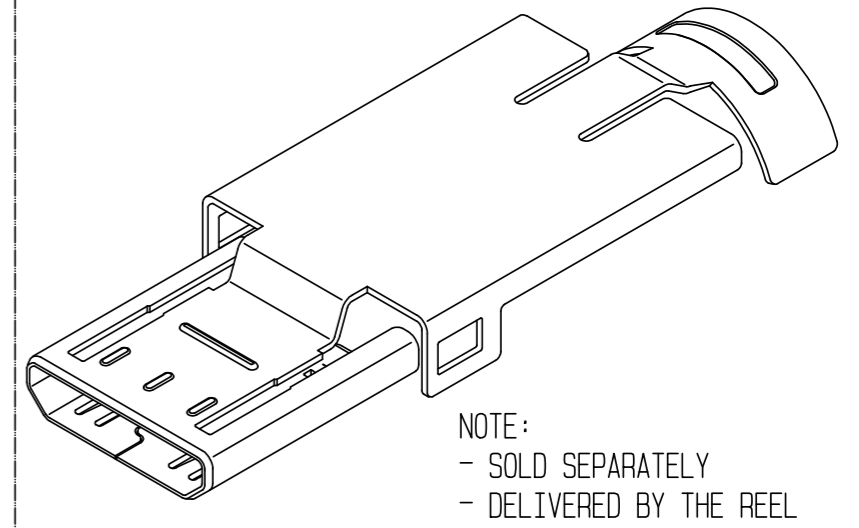


Fig - 3 OVER-MOLDING(REFERENCE)

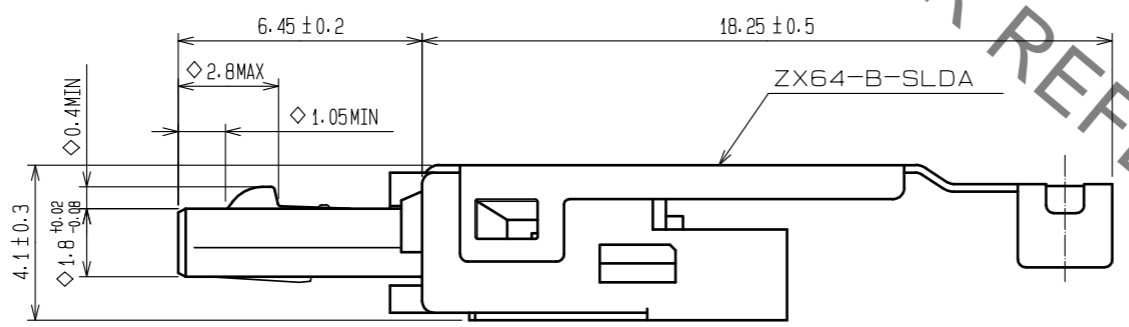
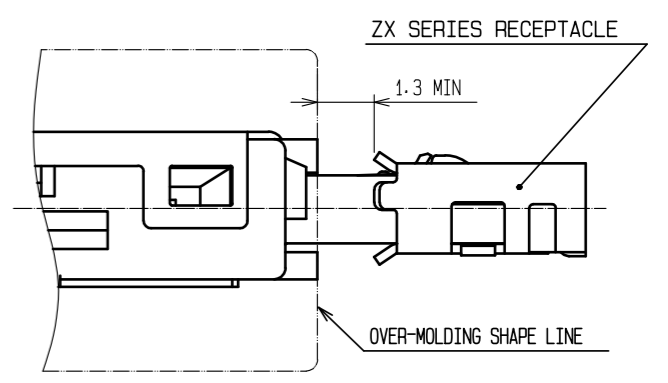


ZX64-B-SLDA  
CODE : CL242-0013-0



NOTE :  
- SOLD SEPARATELY  
- DELIVERED BY THE REEL

Fig - 4 MATED CONDITION



NOTES 3 SHIELDING-PLATES, ZX64-B-SLDA ARE USED FOR ASSEMBLY.  
4 \*◇\*SYMBOL ADDED TO EACH DIMENSION MEANS CRITICAL DIMENSION ON USB SPECIFICATION.  
PLEASE CHECK THEM AFTER OVER-MOLDING.

<b>HRS</b>	DRAWING NO.	EDC-125961-31-00
	PART NO.	ZX64-B-5S-UNIT(31)
	CODE NO.	CL242-0009-3-31
		2/2