

Mar.1.2024 Copyright 2024 HIROSE ELECTRIC CO., LTD. All Rights Reserved.  
In case of consideration for using Automotive equipment / device which demand high reliability, kindly contact our sales window correspondents.

TO

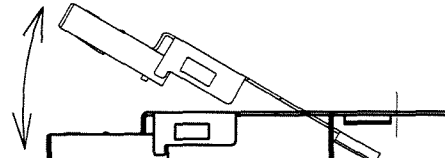
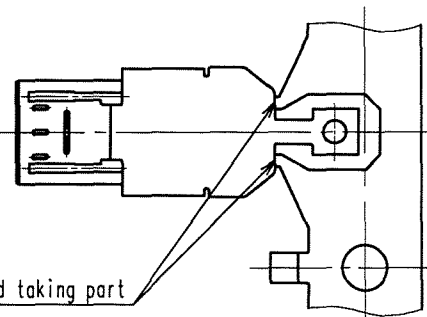
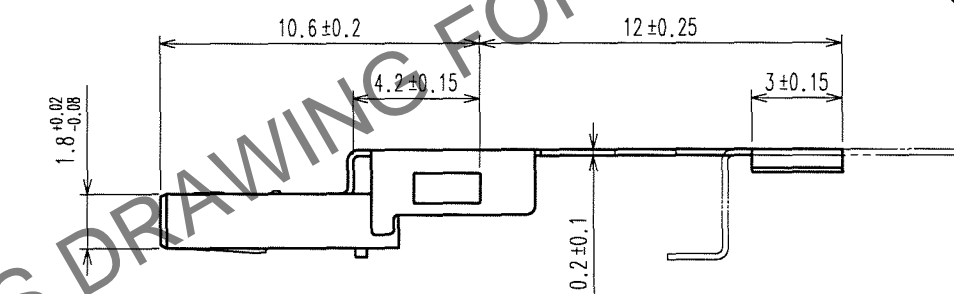
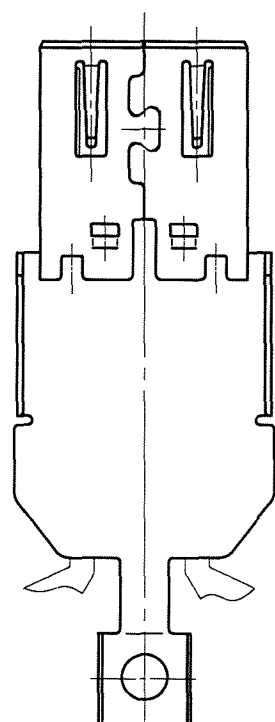
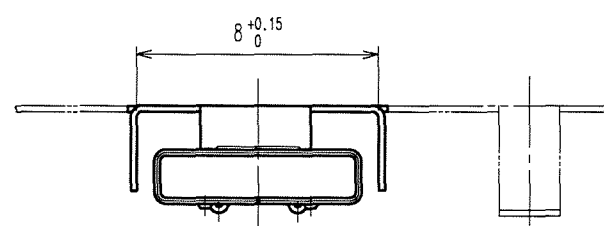
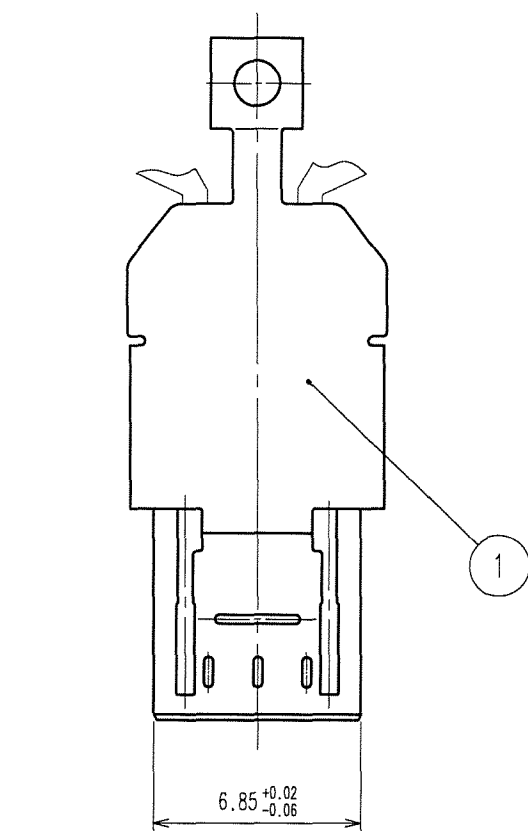
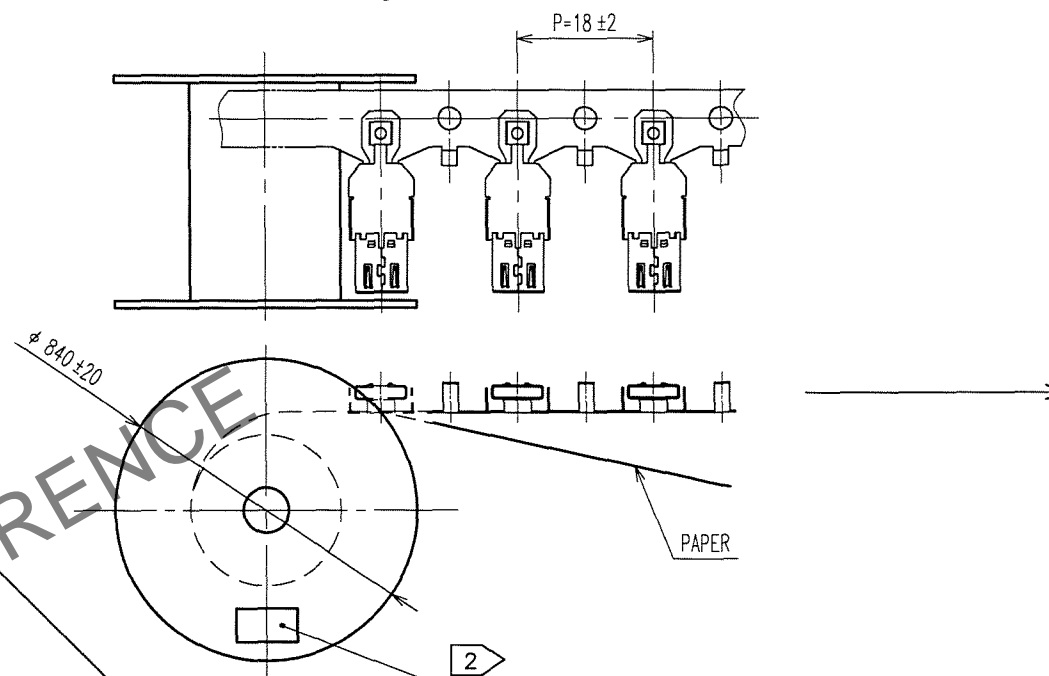


Fig - 2 CUT OF A CAREER

Fig - 1 REELING



- NOTES
- 1 This is delivered by a reel. QTY:4000pcs
  - 2 Shown on a reel and a box is ; "Part No." , "Code No." , "Lot No." , "QTY"
  - 3 Cut off a career as shown in Fig-2.

1		STAINLESS STEEL		Nickel 0.1μ m MIN.		
NO.		MATERIAL		FINISH, REMARKS		
CODE NO. (OLD)		DRAWN	DESIGNED	CHECKED	APPROVED	RELEASED
		74. Ando	74. Ando	R. Koyama	Shigehiko	
		07.09.03	07.09.03	07.09.03	07.09.03	
SCALE		DRAWING NO.		PART NO.		
4 : 1		EDC3-126049		ZX40-A-SLDA		
UNITS		HRS		CODE NO.		
mm		HIROSE ELECTRIC CO., LTD		CL242-0011-5		
				1/1		