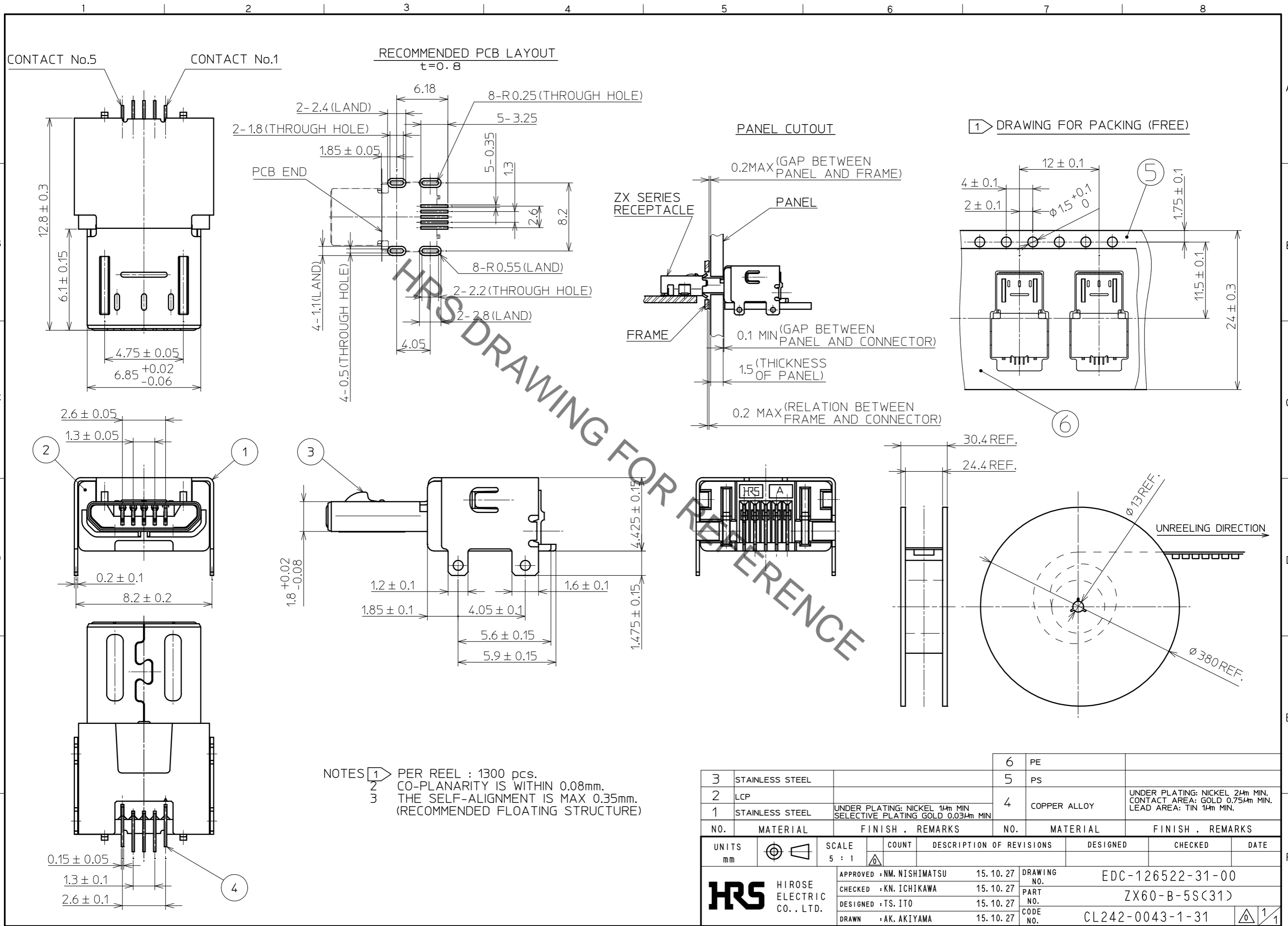


Sep.1.2020 Copyright 2020 HIROSE ELECTRIC CO., LTD. All Rights Reserved.
In case of consideration for using Automotive equipment / device which demand high reliability, kindly contact our sales window correspondents.



NOTES 1 PER REEL : 1300 pcs.
2 CO-PLANARITY IS WITHIN 0.08mm.
3 THE SELF-ALIGNMENT IS MAX 0.35mm.
(RECOMMENDED FLOATING STRUCTURE)

3	STAINLESS STEEL		6	PE				
2	LCP		5	PS				
1	STAINLESS STEEL	UNDER PLATING: NICKEL 14μm MIN SELECTIVE PLATING GOLD 0.03μm MIN	4	COPPER ALLOY	UNDER PLATING: NICKEL 24μm MIN. CONTACT AREA: GOLD 0.75μm MIN. LEAD AREA: TIN 14μm MIN.			
NO.	MATERIAL	FINISH . REMARKS	NO.	MATERIAL	FINISH . REMARKS			
UNITS	mm	SCALE	5 : 1	COUNT	DESCRIPTION OF REVISIONS	DESIGNED	CHECKED	DATE
HRS HIROSE ELECTRIC CO., LTD.		APPROVED : NM. NISHIMATSU	15.10.27	DRAWING NO.	EDC-126522-31-00			
		CHECKED : KN. ICHIKAWA	15.10.27	PART NO.	ZX60-B-5S(31)			
		DESIGNED : TS. ITO	15.10.27	CODE NO.	CL242-0043-1-31			
		DRAWN : AK. AKIYAMA	15.10.27					