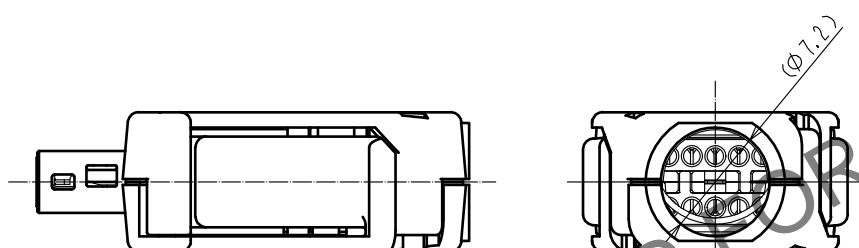
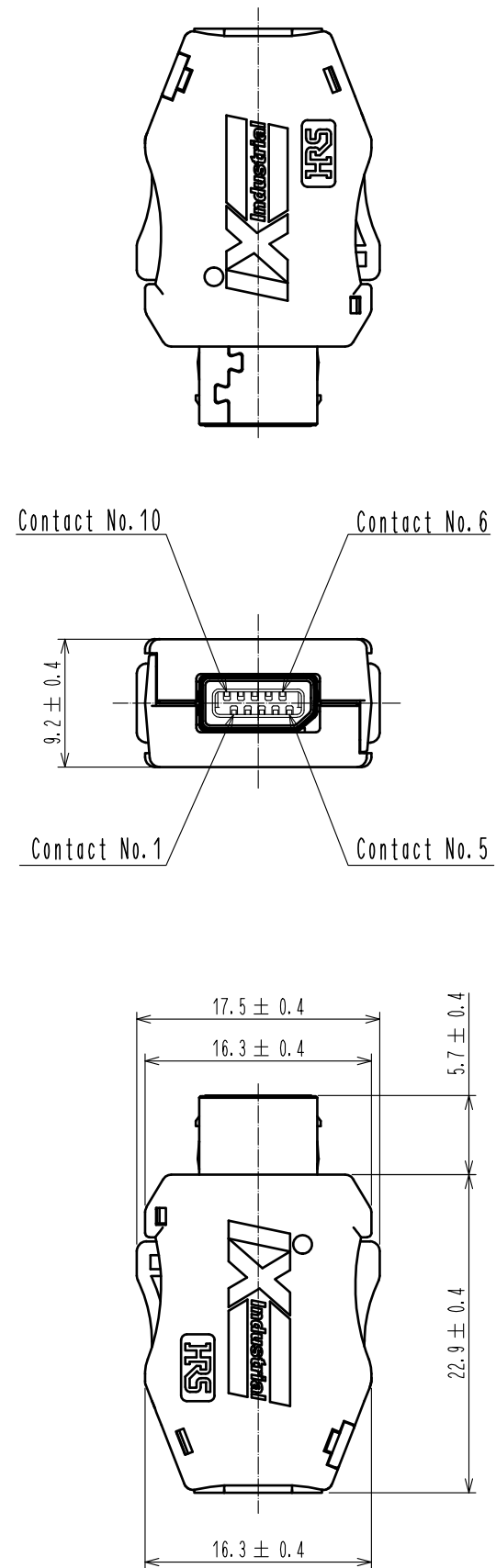


Mar.1.2024 Copyright 2024 HIROSE ELECTRIC CO., LTD. All Rights Reserved.
In case of consideration for using Automotive equipment / device which demand high reliability, kindly contact our sales window correspondents.

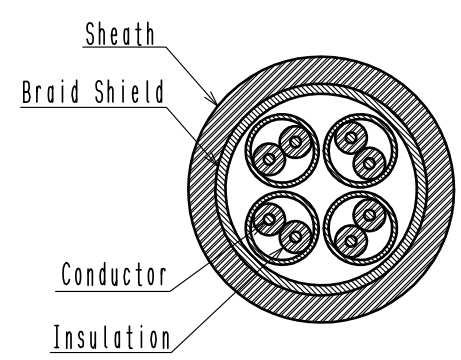
A
B
C
D
E
F



Notes. 1. Recommended cable condition is shown below.
A list of compatible cables is available on the Hirose website.
When using a non-recommended cable, please contact a Hirose sales representative.
Refer to the technical specification (ETAD-E3162) for wiring and assembly procedures.

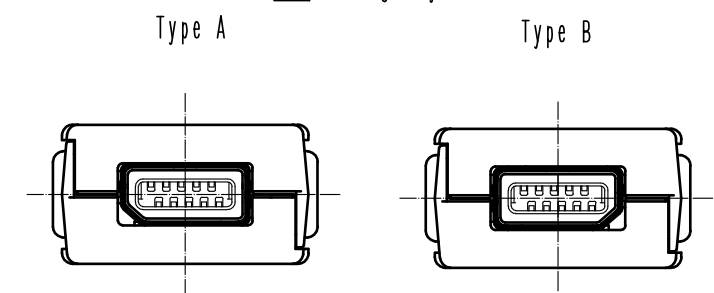
Recommended Cable

Items		Recommended Condition
Conductor	Size	AWG#28 to 26
	Composition	7 stranded
	Material	Annealed copper wire
Insulation O.D.		$\phi 0.95$ to 1.05mm
Braid Shield		Tin plating
Sheath O.D.		$\phi 6.3$ to 7.2mm



2. This product (Type B) is used for non Ethernet applications like signaling, serial or other industrial bus communication systems.
Please use Type A for 10/100 Mbit/s and 1/10 Gbit/s Ethernet communication.

Mating Key

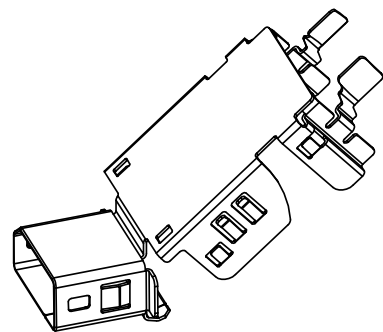


Excluding the plug unit, this product is packaged separately by the type of parts.
The shield shell is packaged prior to bending. (See next page.)

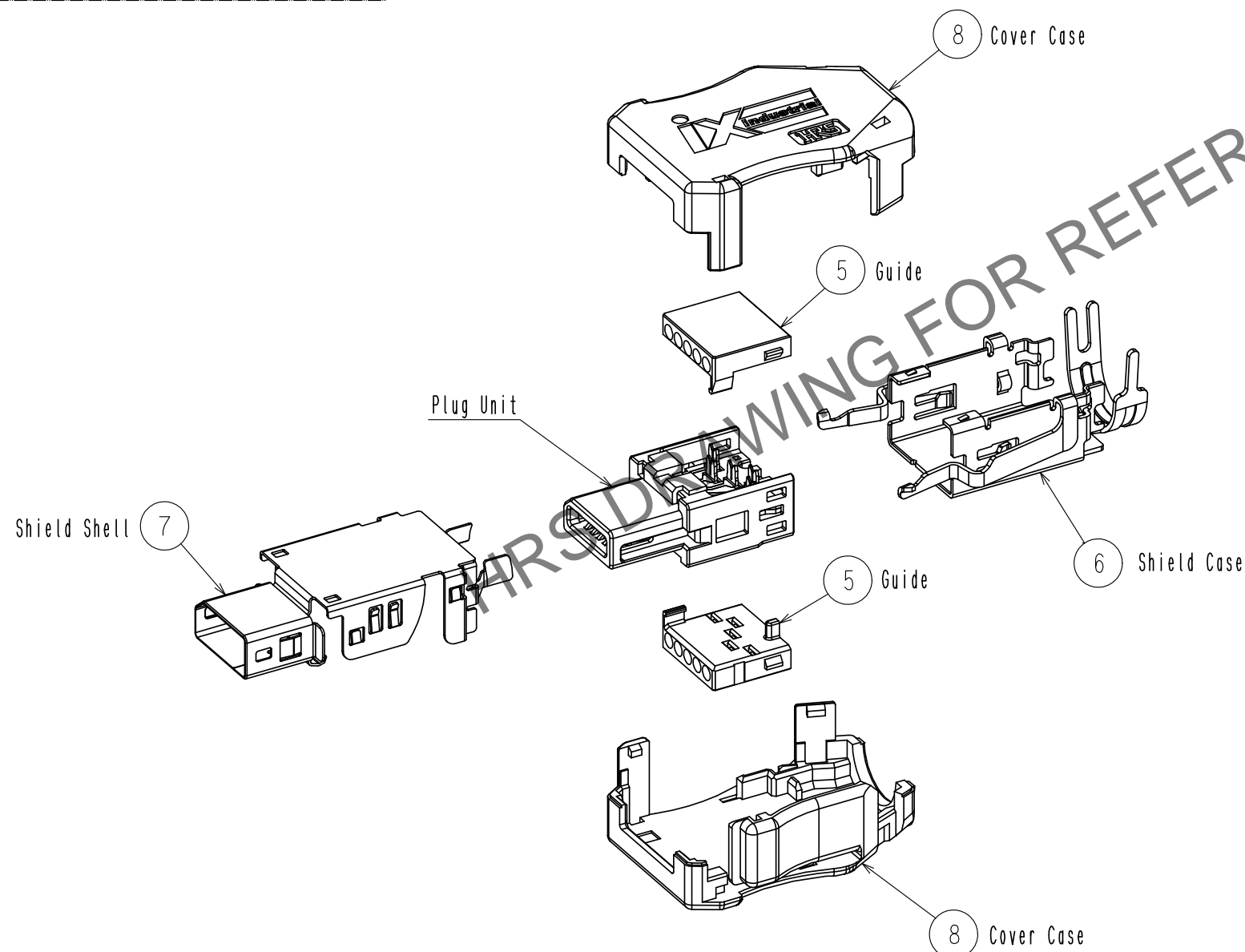
3	Stainless Steel		8	PC	Dark gray, UL94V-0
2	PA	Black, UL94V-0	7	Stainless Steel	Nickel 0.2 μm min
1	Copper Alloy	Contact area : Palladium-Nickel 0.75 μm min + Gold 0.05 μm min	6	Stainless Steel	Nickel 1 μm min
		Wiring area : Gold 0.03 μm min	5	PC	Clear, UL94V-0
		Under plating : Nickel 2 μm min	4	PA	Black, UL94V-0
NO.	MATERIAL	FINISH . REMARKS	NO.	MATERIAL	FINISH . REMARKS
UNITS mm		SCALE 2 : 1	COUNT 6	DESCRIPTION OF REVISIONS DIS-E-00006876	DESIGNED MT. YASUDA
HIROSE ELECTRIC CO., LTD.		APPROVED : RI. TAKAYASU	20170328	DRAWING NO.	EDC-129487-01-00
		CHECKED : KI. NAGANUMA	20170328	PART NO.	IX30G-B-10S-CV<7.0><01>
		DESIGNED : HT. SATO	20170328	CODE NO.	CL0251-0025-0-01
		DRAWN : HT. SATO	20170328		

Mar.1.2024 Copyright 2024 HIROSE ELECTRIC CO., LTD. All Rights Reserved.
In case of consideration for using Automotive equipment / device which demand high reliability, kindly contact our sales window correspondents.

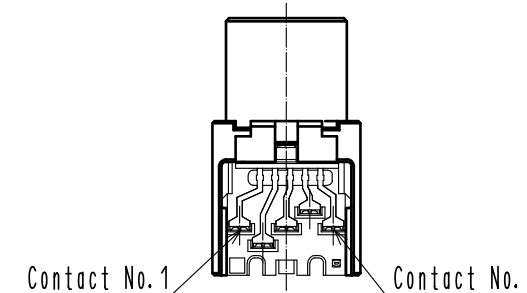
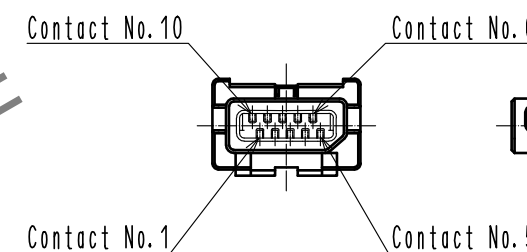
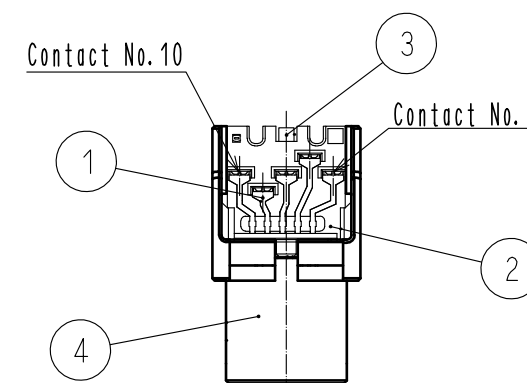
3 Shield Shell Delivery Form



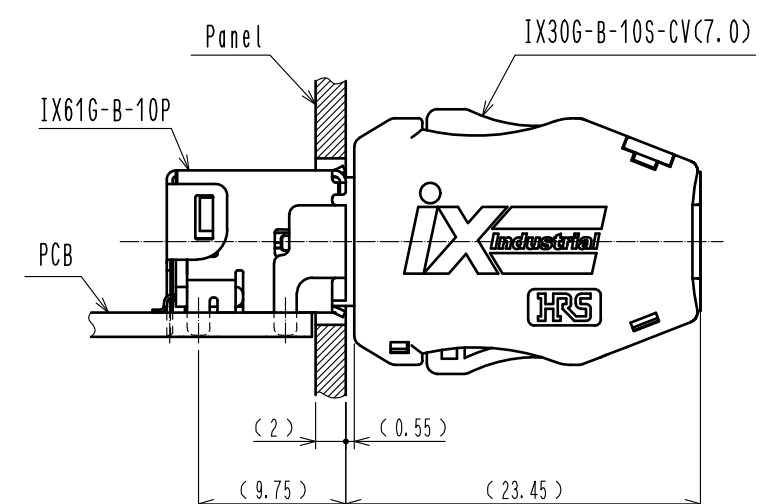
3 Product Structure



Plug Unit



5 Mated Condition



DRAWING NO.	EDC-129487-01-00
PART NO.	IX30G-B-10S-CV(7.0)<01>
CODE NO.	CL0251-0025-0-01

