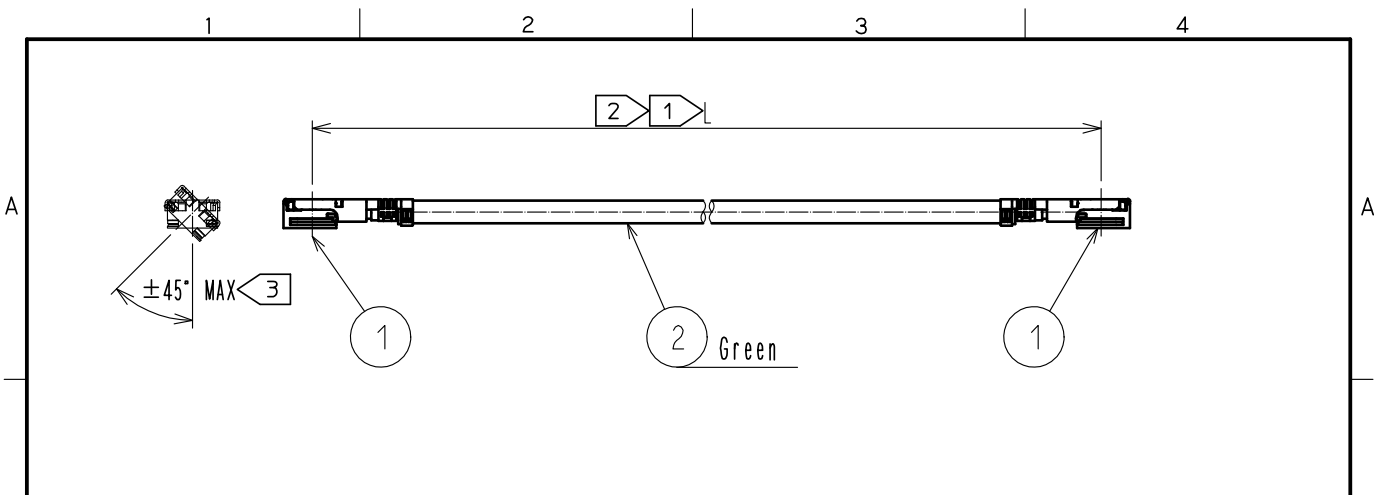


Jan.1.2021 Copyright 2021 HIROSE ELECTRIC CO., LTD. All Rights Reserved.  
In case of consideration for using Automotive equipment / device which demand high reliability, kindly contact our sales window correspondents.



NOTE ① We indicate the length of the harness on the last of product name. 'L' part.  
② Tolerance for [ L ]

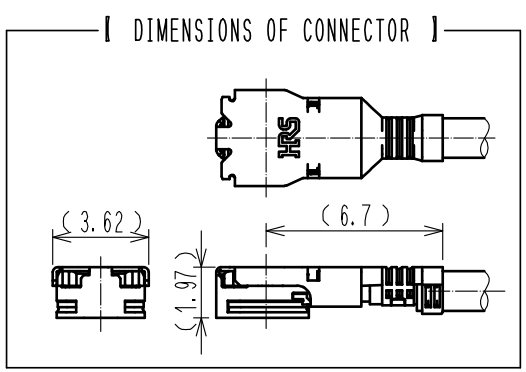
Length L [mm]	Tolerance [mm]
50 ≦ L ≦ 200	±4
200 < L ≦ 500	±8
500 < L ≦ 1000	±12
1000 < L	±1.5%

③ Connector rotation angle is within ±45 degree from the above image.  
For long length in the case of L > 500, the angle is optional.

4. Specifications are subject to change without notice.

【 PRECAUTIONS FOR HANDLING 】

- ◆ Connector insertion and extraction
  - a. Connector shall be extracted vertically by specialised extraction JIG.  
Part No. :D.FL75-LP-N  
Never hold the cable when extracting the cable because it damages the connector.
  - b. Insert the connector as perpendicularly to the mating surface as possible by aligning the mating axes of both connectors. Do not excessively slant the connectors when inserting.
  - c. Please do not apply the overload of the direction which lifts a cable near the mating area.  
There is a possibility that the insert-in plug will separate.



HALOGEN FREE

1	D.FL75-LP(P)-084	CL331-0078-0-00	2	1.5Dia coaxical cable (Green)
NO.	PART NO.	CODE NO.	NO.	PART NO.

UNITS mm		SCALE FREE	COUNT 	DESCRIPTION OF REVISIONS	DESIGNED	CHECKED	DATE
-------------	--	---------------	-----------	--------------------------	----------	---------	------

HIROSE ELECTRIC CO., LTD.	APPROVED :NK. NINOMIYA	20200131	DRAWING NO.	DFL75-2LPP-084N9D-A-L
	CHECKED :NK. NINOMIYA	20200131	PART NO.	
	DESIGNED :YK. KIUCHI	20200131	CODE NO.	
	DRAWN :YK. KIUCHI	20200131	NO.	