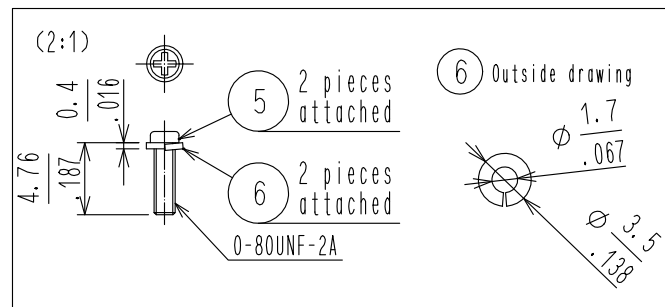
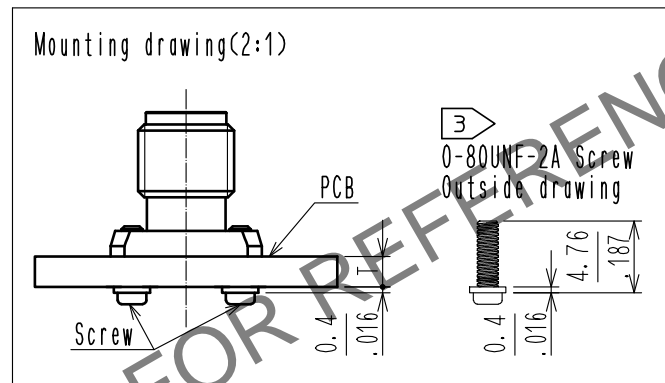
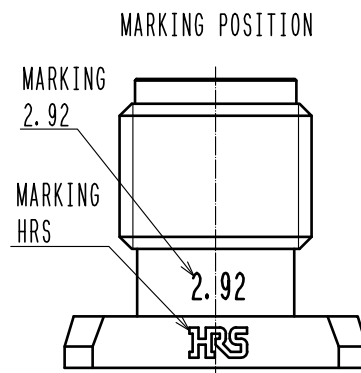
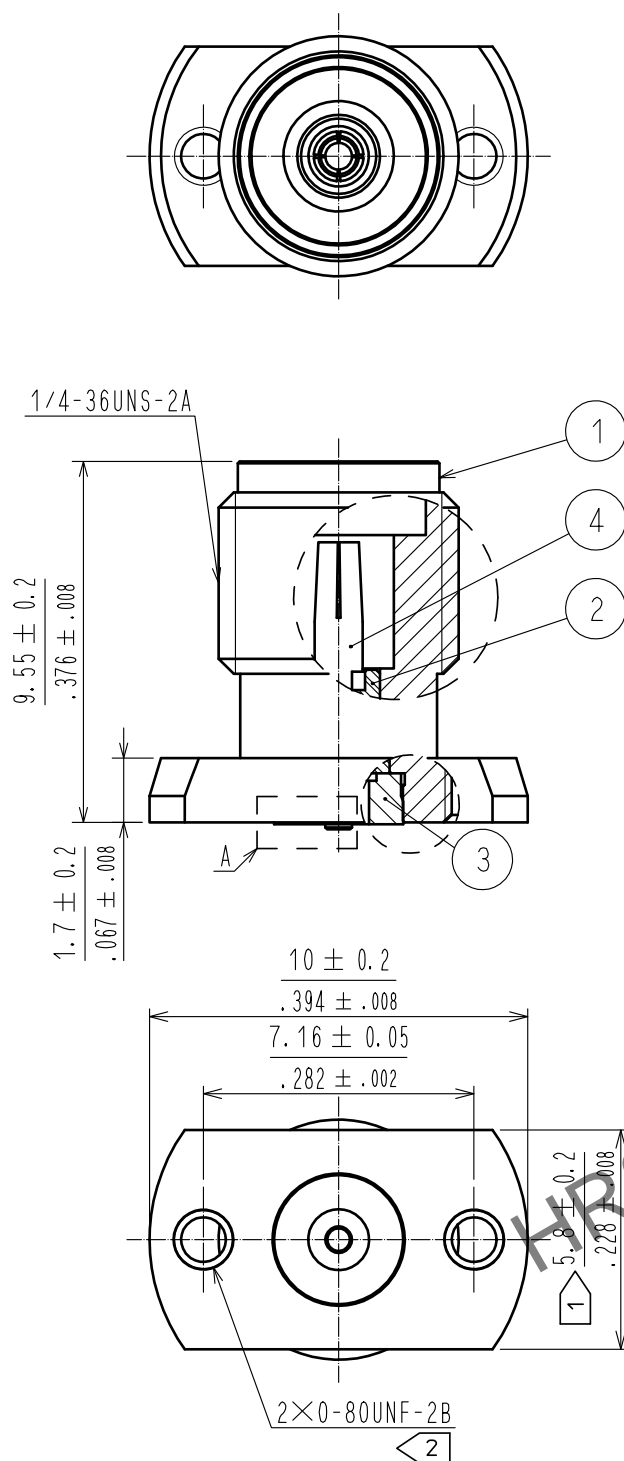
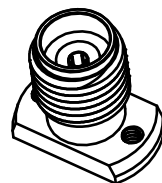
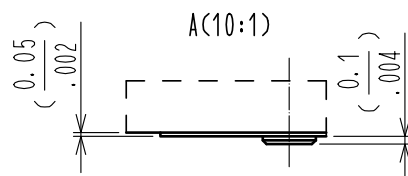
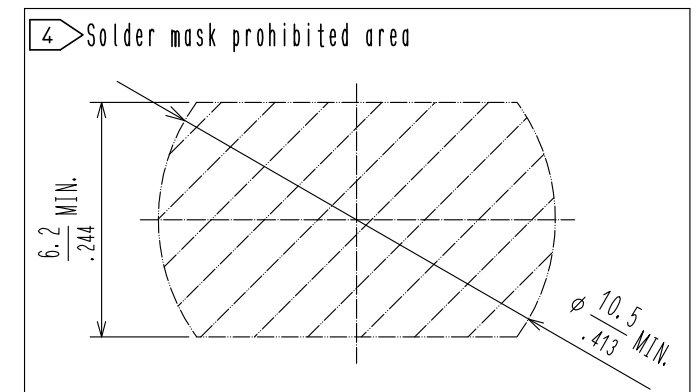
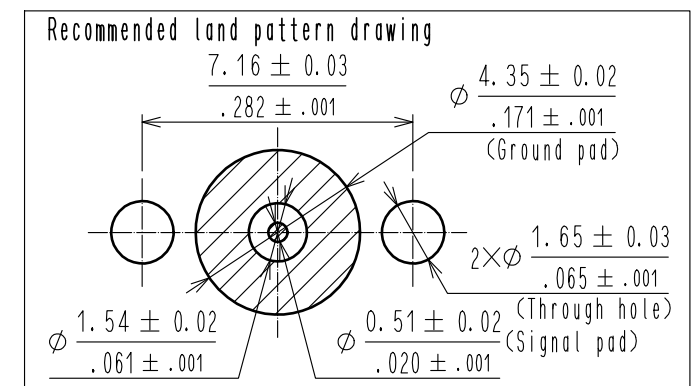


Apr.1.2024 Copyright 2024 HIROSE ELECTRIC CO., LTD. All Rights Reserved.  
In case of consideration for using Automotive equipment / device which demand high reliability, kindly contact our sales window correspondents.



- 1 When mating the connector, please hold milling area of  $5.8 \pm 0.2$  with spanner not to place stress on PCB by the torque.
- 2 0-80UNF-2B Screw tightening torque is  $0.09\text{N} \cdot \text{m}$ . Please tighten the screws evenly when mounting the connectors to ensure stable electrical contact.
- 3 Please use attached screw and washer for PCB mounting. Attached screw and washer apply PCB thickness  $T=0.8$  to  $2.65\text{mm}$ .
- 4 Indicates the area that solder mask is prohibited.
5. This Product is a solderless mounted connector for prototype evaluation of high speed transmission boards. It is not recommended for use in actual commercial equipment.



3	STAINLESS STEEL	GOLD PLATING	6	STAINLESS STEEL	Spring washer
2	PTFE		5	STEEL	0-80UNF-2A Screw
1	STAINLESS STEEL	PASSIVATE	4	BERYLLIUM COPPER	GOLD PLATING
NO.	MATERIAL	FINISH . REMARKS	NO.	MATERIAL	FINISH . REMARKS
UNITS mm		SCALE 5 : 1	COUNT 1	DESCRIPTION OF REVISIONS DIS-D-00016754	DESIGNED Y.J. HAGA
HIROSE ELECTRIC CO., LTD.		APPROVED : KY. SHIMIZU	20160830	DRAWING NO.	EDC-366760-12-01
		CHECKED : TO. KATAYAMA	20160830	PART NO.	HK-R-SR2-1(12)
		DESIGNED : TP. MATSUMOTO	20160829	CODE NO.	CL0338-0003-0-12
		DRAWN : TP. MATSUMOTO	20160829		
					DATE 20230904