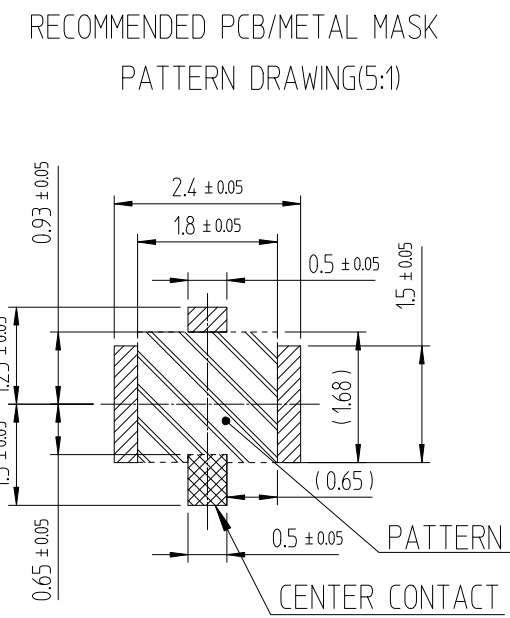
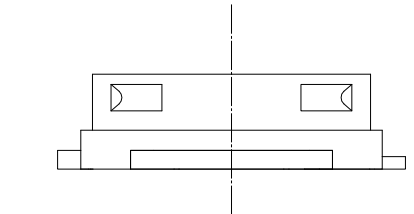
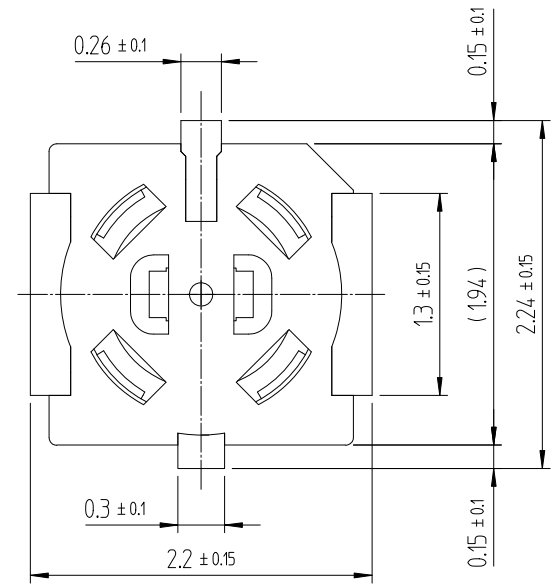
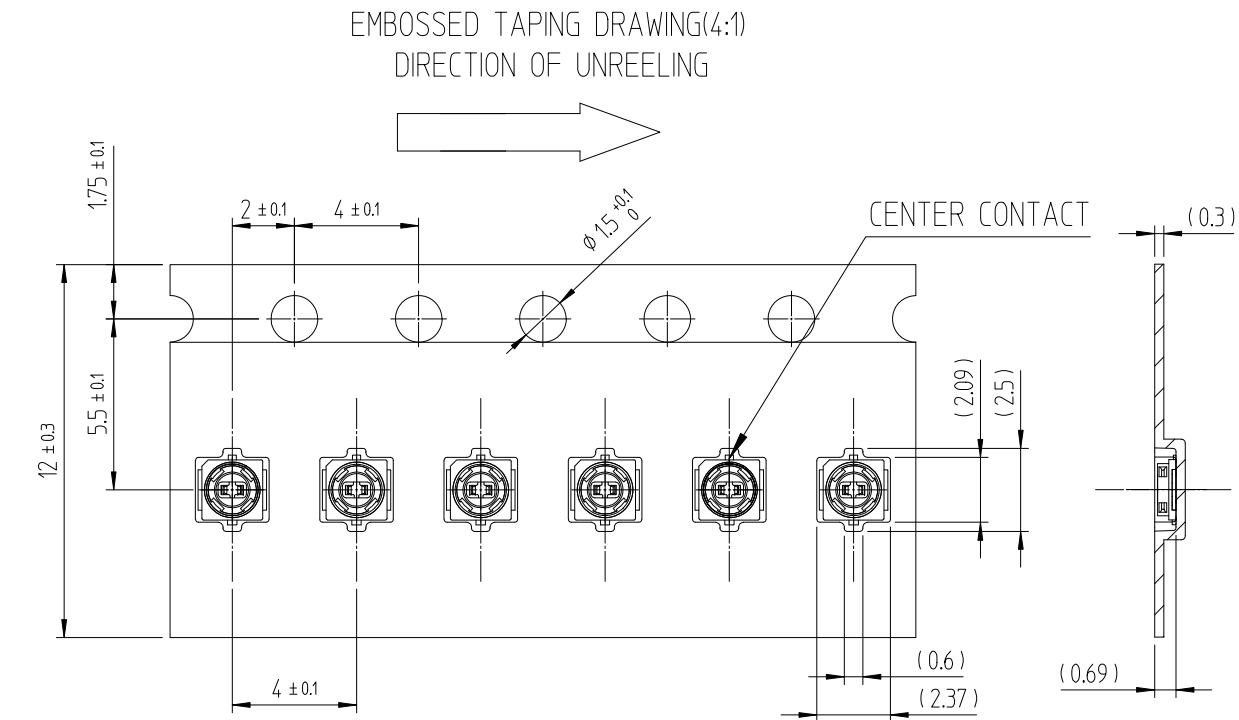


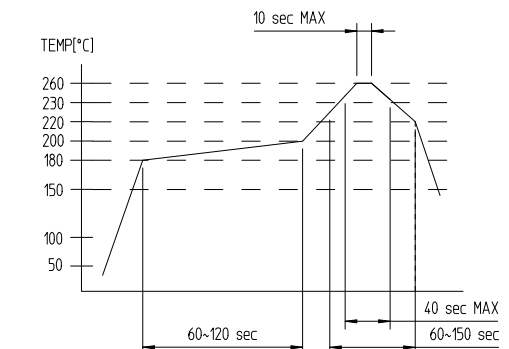
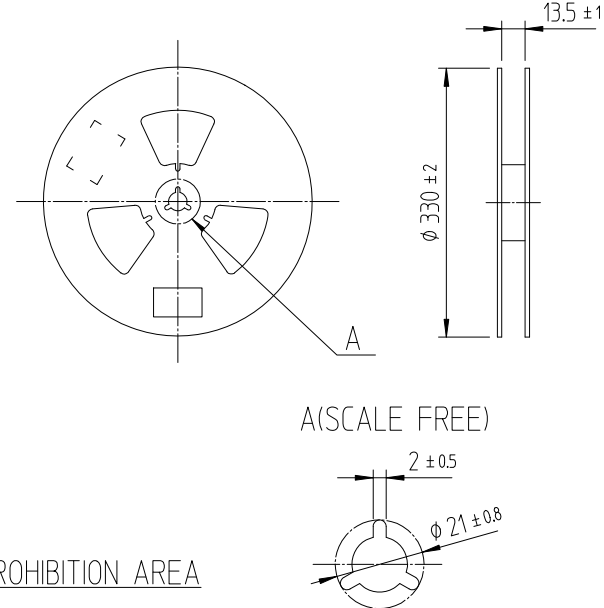
HRS DRAWING FOR REFERENCE



訂正事項				訂正事項			
△數	DESCRIPTION OF REVISIONS	擔當	檢圖	年 月 日	△數	DESCRIPTION OF REVISIONS	擔當
COUNT		B	Y	CHKD	DATE	COUNT	
△					△		
△					△		
△					△		



REEL DRAWING (SCALE FREE) 5> RECOMMENDED REFLOW TEMPERATURE PROFILE



NOTE
MOUNTING TEMPERATURE PROFILE VARIES ACCORDING
TO BOARD SIZE, SOLDER TYPE APPLIED AND SOLDER THICKNESS
- METAL MASK THICKNESS : 0.1mm

RoHS COMPLIANT, Halogen Free

- NOTES :
- The quantity of K.FL2-PR-SMT09 is 10000 connectors per reel.
 - Lead co-planarity shall be 0.1max.
 - For the possibility of breakage or deformation
do not mate this connector with partner, K.FL2-R-SMT-1 before mounting on pc board.
 - 4> Please contact us in case you will make different settings from our recommendation.

1			3	LCP	<BLACK>, UL94V-0		
2			2	PHOSPHOR BRONZE	UNDER PLATING: NICKEL OVER PLATING: GOLD		
NO. MATERIAL			FINISH,REMARKS			FINISH,REMARKS	
CODE NO. (OLD)			DRAWN		DESIGNED	CHECKED	APPROVED
			W.Y.AHN 19.01.25		W.Y.AHN 19.01.25	H.S.KIM 19.01.25	H.S.KIM 19.01.25
			RELEASED		ENG 19.01.25 DEPT		
DRAWING NO.			PART NO.			K.FL2-PR-SMT09 (800)	
EDC3-632121-80			CODE NO			CL6345-0056-0-800	
SCALE 20:1			HIROSE KOREA CO.,LTD.			1 2	
UNITS mm							

Apr.1.2024 Copyright 2024 HIROSE ELECTRIC CO., LTD. All Rights Reserved.
In case of consideration for using Automotive equipment / device which demand high reliability, kindly contact our sales window

□ MOUNTING PRECAUTIONS

a. FPC MOUNTING

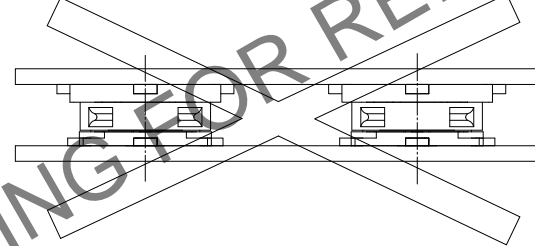
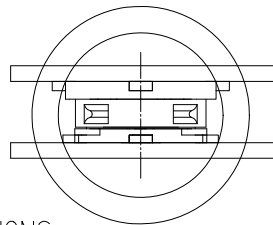
FPC must have suitable stiffener to prevent peeling of the solder joints during mating/unmating.

We recommend the FPC to be supported with the reinforcement.

b. MULTI-CONNECTOR PLACEMENT

When mounting on a solid PCB on both sides do not place more than one connector on each side.

When mounting one side on a rigid PCB and other on the flexible printed circuit several connectors can be mounted on the rigid side. The FPC must have slots between each of the connectors to allow alignment with each corresponding connector.

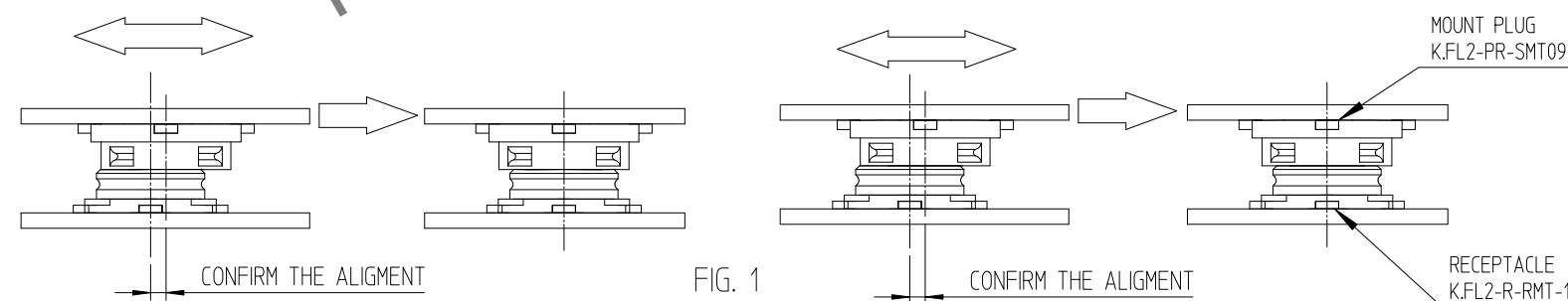


□ MATING PRECAUTIONS

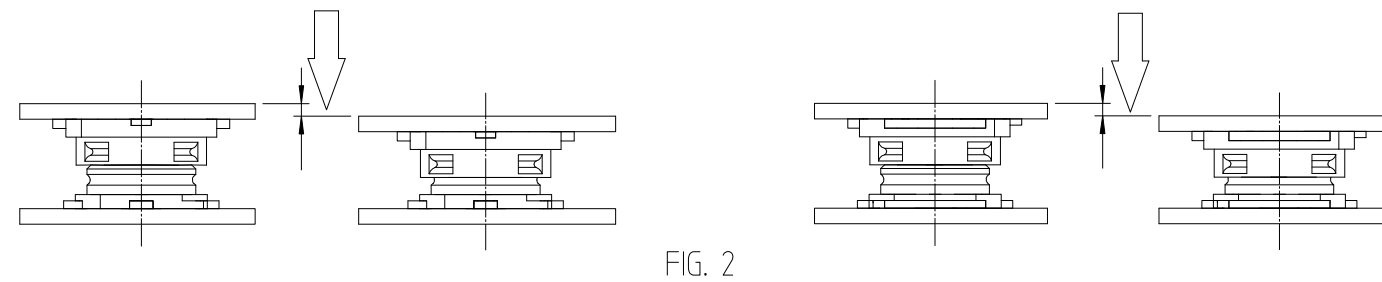
Connectors must be mated by hand only. Application of excessive forces may damage the connectors.

● MATING PROCEDURES

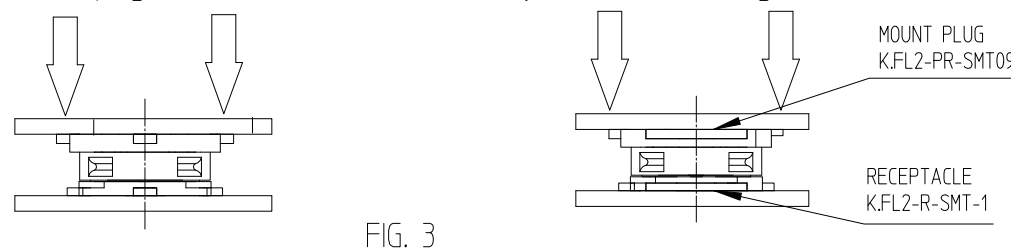
1) Align mount plug (K.FL2-PR-SMT09) and receptacle (K.FL2-R-SMT-1) by slight touch as shown on fig. 1.



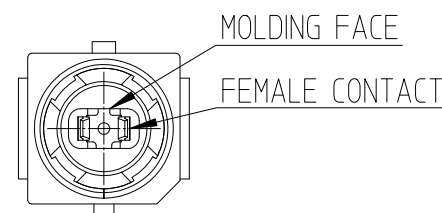
2) Confirm the alignment by applying slight even pressure to the mount plug (K.FL2-PR-SMT09) partially inserting it in the mount receptacle (K.FL2-R-SMT-1), as shown in fig. 2. The plug should not move sideways or be slanted.



3) Push-down on the mount plug (K.FL2-PR-SMT09) until it is fully inserted, confirming it with a tactile 'CLICK'.



4) When mating was not possible. Please use it after confirming that a plug receptacle female contact by the transformation or the mold part does not have transformation before just using a plug receptacle.



□ UNMATING PRECAUTIONS

Unmate by applying even vertical force to the mount plug (K.FL2-PR-SMT09) as shown on fig. 4.

Do not rock or lift by one side only. FPC must have suitable stiffener.

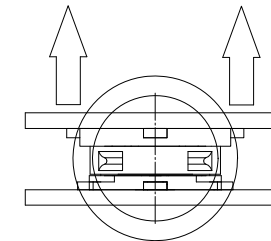
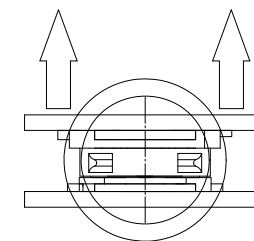


FIG. 4



If encountering some resistance during the unmounting start lifting from side as shown on fig. 5. Do not attempt unmounting by lifting it from any of the other side.

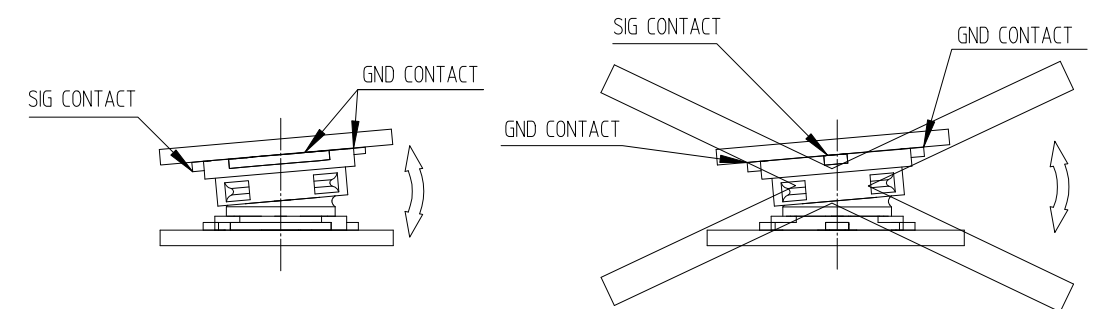
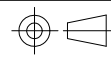


FIG. 5

□ SUGGESTIONS TO PREVENT ACCIDENTAL UNMATING

In environments where the connectors may encounter severe shock, vibration or FPC's bend spring-back it is advisable to provide additional support when connectors are fully mated.

E.G. : device chassis or compressive cushion.

 SCALE 10:1 UNITS mm	DRAWING NO. EDC3-632121-80	PART NO. K.FL2-PR-SMT09(800)	2 2
	HIROSE KOREA CO.,LTD.	CODE NO CL6345-0056-0-800	