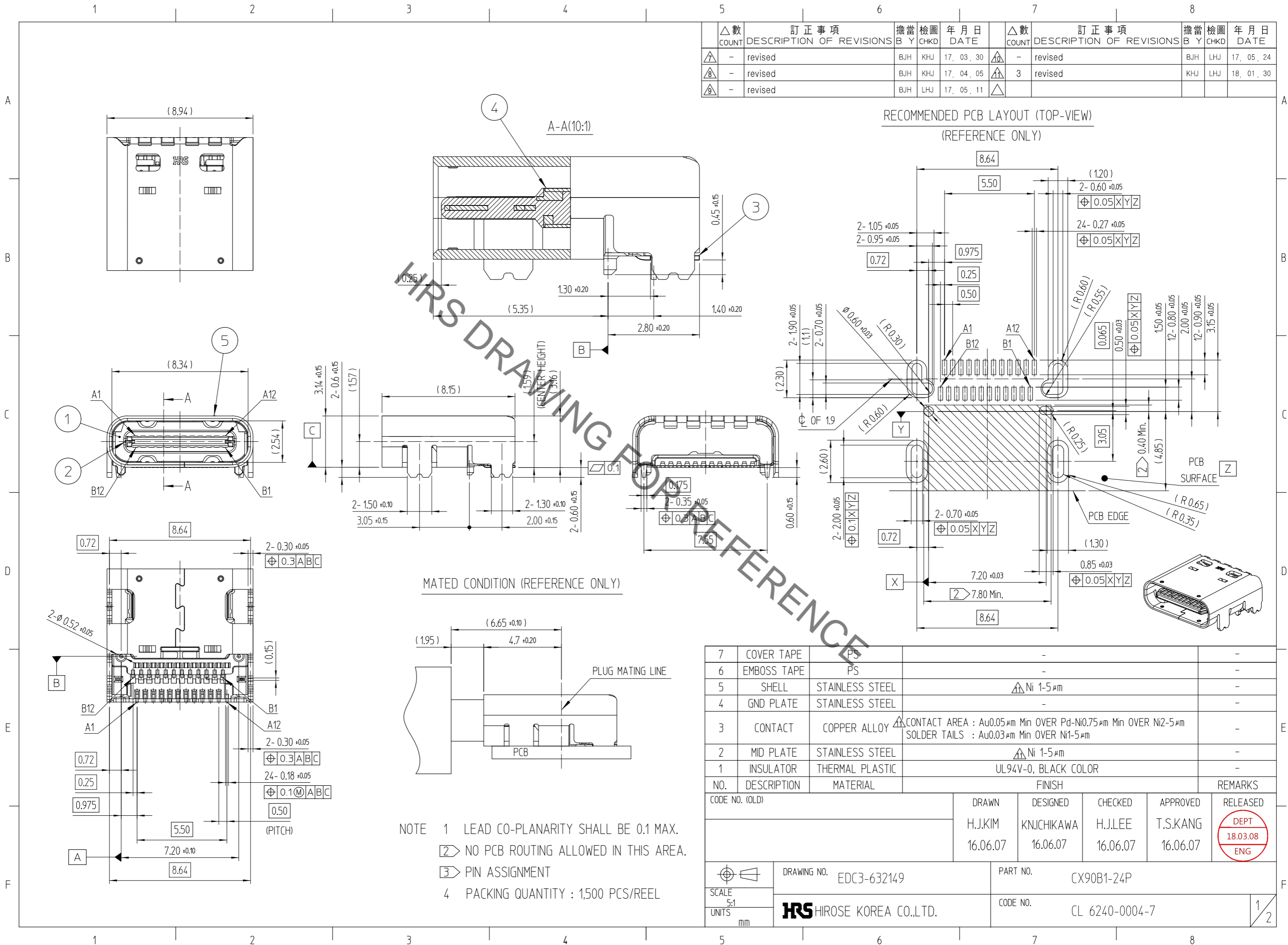


Sep.1.2019 Copyright 2019 HIROSE ELECTRIC CO., LTD. All Rights Reserved.
In case of consideration for using Automotive equipment / device which demand high reliability, kindly contact our sales window correspondents.



| △數 COUNT | 訂正事項 DESCRIPTION OF REVISIONS | 擔當 B | 檢圖 CHKD | 年月日 DATE | △數 COUNT | 訂正事項 DESCRIPTION OF REVISIONS | 擔當 B | 檢圖 CHKD | 年月日 DATE |
|-------------|----------------------------------|---------|------------|-------------|-------------|----------------------------------|---------|------------|-------------|
| △7 | - revised | BJH | KHJ | 17. 03. 30 | △7 | - revised | BJH | LHJ | 17. 05. 24 |
| △8 | - revised | BJH | KHJ | 17. 04. 05 | △8 | 3 revised | KHJ | LHJ | 18. 01. 30 |
| △9 | - revised | BJH | LHJ | 17. 05. 11 | △9 | | | | |

RECOMMENDED PCB LAYOUT (TOP-VIEW)
(REFERENCE ONLY)

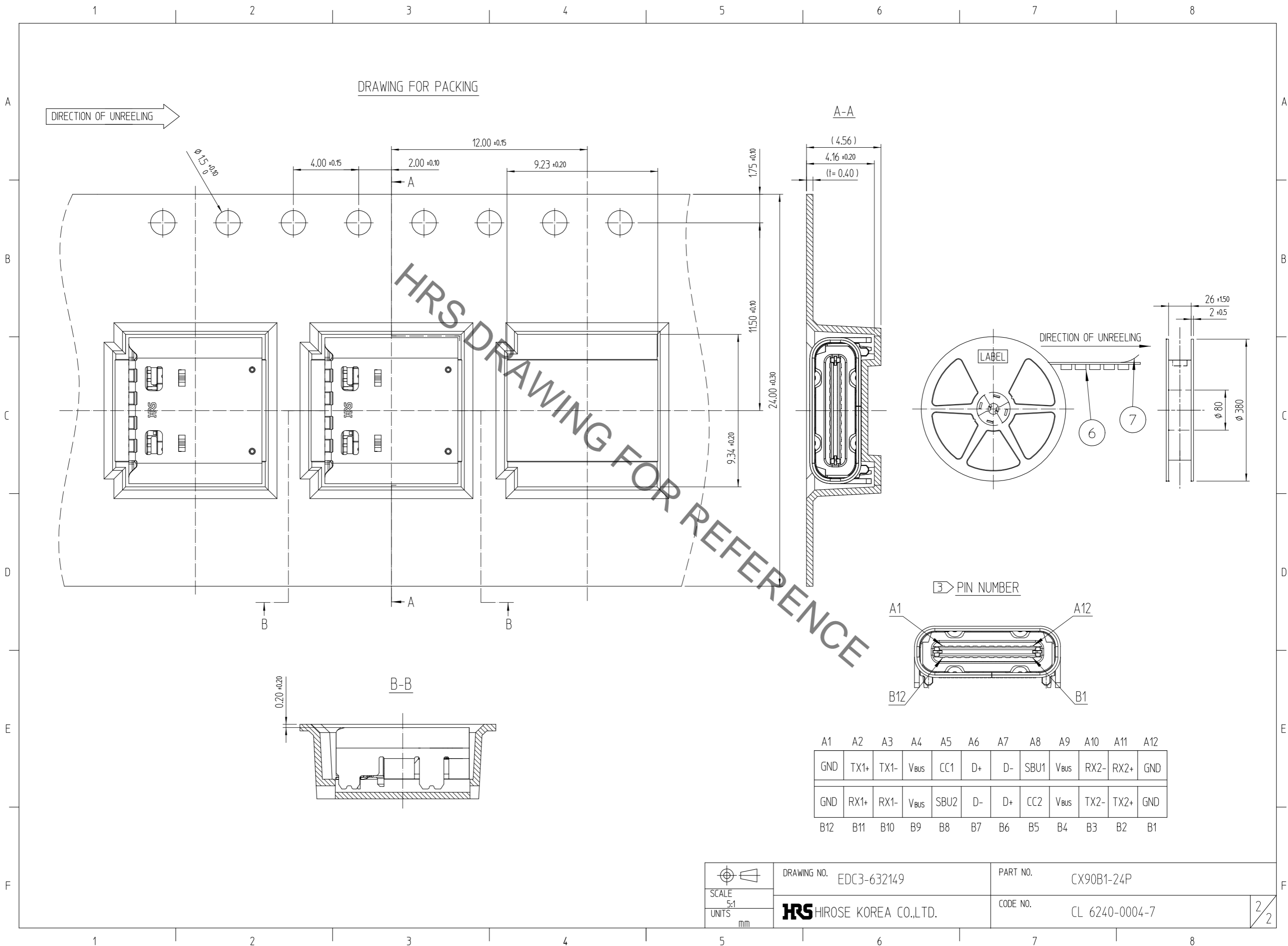
MATED CONDITION (REFERENCE ONLY)

NOTE 1 LEAD CO-PLANARITY SHALL BE 0.1 MAX.
 2 NO PCB ROUTING ALLOWED IN THIS AREA.
 3 PIN ASSIGNMENT
 4 PACKING QUANTITY : 1,500 PCS/REEL

| NO. | DESCRIPTION | MATERIAL | FINISH | REMARKS |
|-----|-------------|-----------------|--|---------|
| 7 | COVER TAPE | PS | - | - |
| 6 | EMBOSS TAPE | PS | - | - |
| 5 | SHELL | STAINLESS STEEL | △Ni 1-5μm | - |
| 4 | GND PLATE | STAINLESS STEEL | - | - |
| 3 | CONTACT | COPPER ALLOY | △CONTACT AREA : Au0.05μm Min OVER Pd-Ni0.75μm Min OVER Ni2-5μm SOLDER TAILS : Au0.03μm Min OVER Ni1-5μm | - |
| 2 | MID PLATE | STAINLESS STEEL | △Ni 1-5μm | - |
| 1 | INSULATOR | THERMAL PLASTIC | UL94V-0, BLACK COLOR | - |

| CODE NO. (OLD) | | DRAWN | DESIGNED | CHECKED | APPROVED | RELEASED |
|-------------------------|--|-----------------------|-------------|-------------------------|----------|-------------------------|
| | | H.J.KIM | KNJICHIKAWA | H.J.LEE | T.S.KANG | DEPT 18.03.08 ENG |
| DRAWING NO. EDC3-632149 | | PART NO. CX90B1-24P | | | | |
| SCALE 5:1 UNITS mm | | HIROSE KOREA CO.,LTD. | | CODE NO. CL 6240-0004-7 | | 1/2 |

Sep.1.2019 Copyright 2019 HIROSE ELECTRIC CO., LTD. All Rights Reserved.
 In case of consideration for using Automotive equipment / device which demand high reliability, kindly contact our sales window correspondents.



| | | | | | | | | | | | |
|-----|------|------|------------------|------|----|----|------|------------------|------|------|-----|
| A1 | A2 | A3 | A4 | A5 | A6 | A7 | A8 | A9 | A10 | A11 | A12 |
| GND | TX1+ | TX1- | V _{bus} | CC1 | D+ | D- | SBU1 | V _{bus} | RX2- | RX2+ | GND |
| GND | RX1+ | RX1- | V _{bus} | SBU2 | D- | D+ | CC2 | V _{bus} | TX2- | TX2+ | GND |
| B12 | B11 | B10 | B9 | B8 | B7 | B6 | B5 | B4 | B3 | B2 | B1 |

| | | | | |
|---------------------------------|-----------------------|-------------|----------|----------------|
| SCALE 5:1 UNITS mm | DRAWING NO. | EDC3-632149 | PART NO. | CX90B1-24P |
| | HIROSE KOREA CO.,LTD. | | CODE NO. | CL 6240-0004-7 |