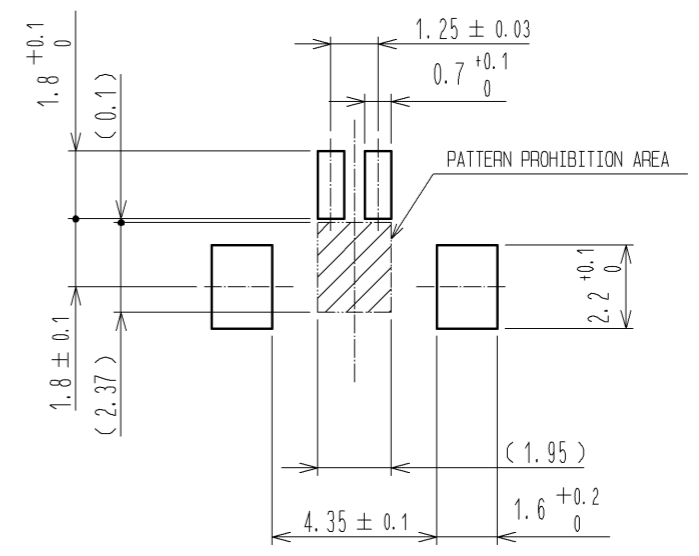
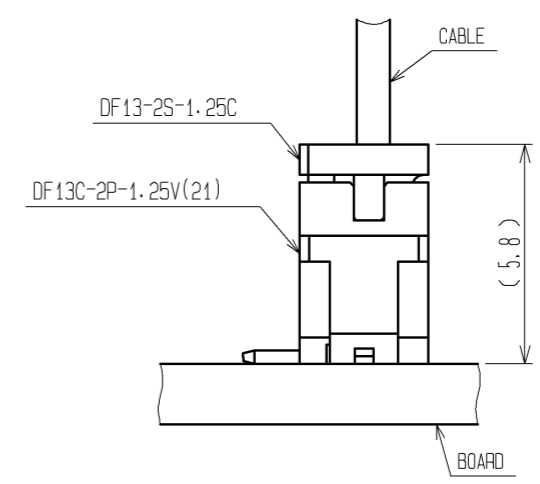


3 RECOMMENDED PATTERN



APPLICATION DRAWING

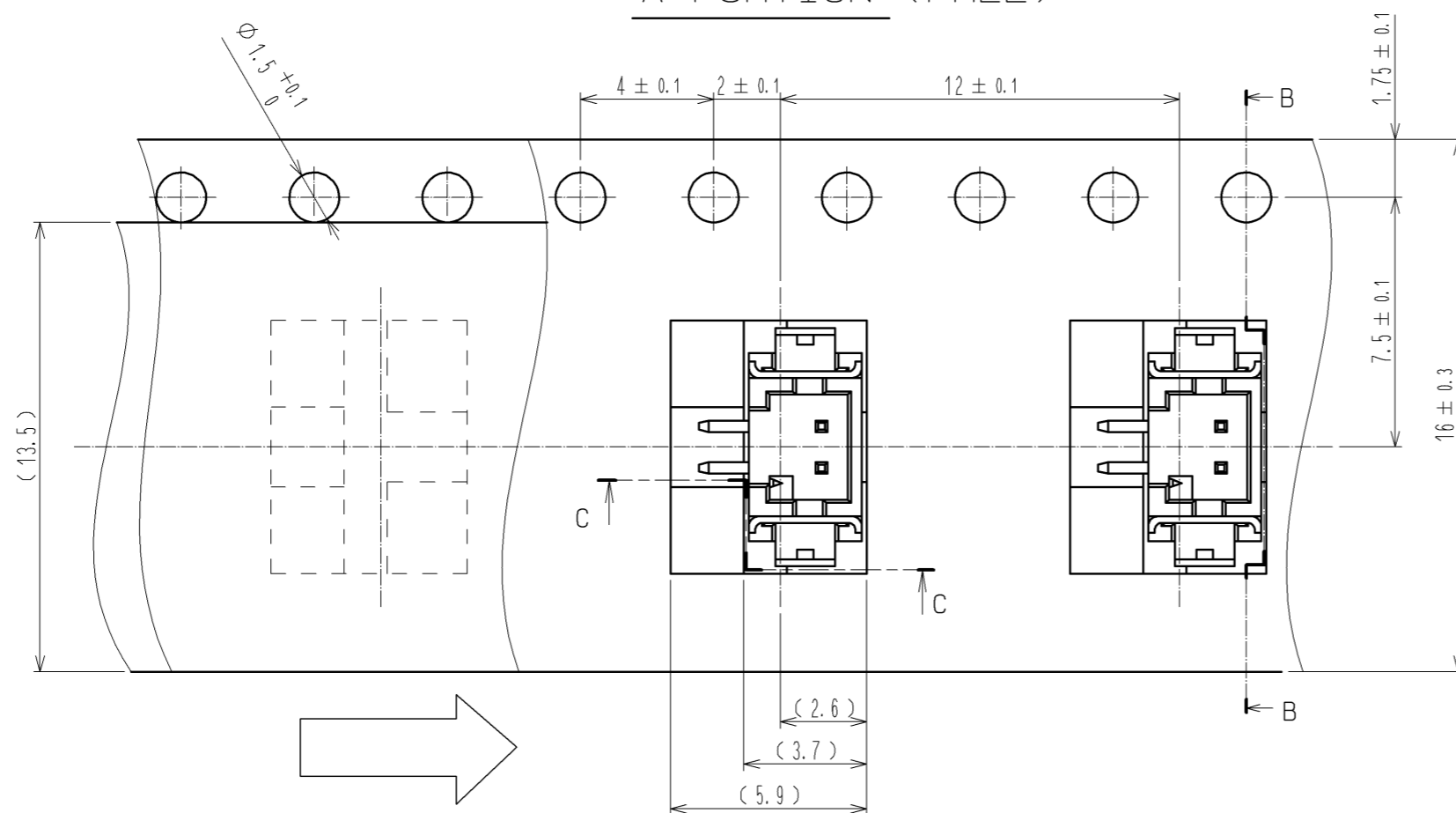


- NOTES 1: WHEN THIS CONNECTOR MATES WITH DF13-2S-1.25C, THE MATING HEIGHT IS 5.8mm.
 2: LEAD CO-PLANARITY INCLUDING REINFORCED METAL FITTINGS SHALL BE WITHIN 0.1mm.
 3: RECOMMENDED THICKNESS OF CREAM SOLDER PASTE: 0.15mm~0.2mm
 OPEN AREA RATIO: 100%

2	BRASS	SURFACE:TIN PLATED 1μm min.	5	POLYESTER	COVER TAPE, CLEAR			
1	POLYAMIDE	UL94V-0, BEIGE	4	PS	EMBOSSED CARRIER TAPE, CLEAR			
			3	PHOSPHOR BRONZE	SURFACE:TIN PLATED 1μm min.			
NO.	MATERIAL	FINISH, REMARKS	NO.	MATERIAL	FINISH, REMARKS			
UNITS	mm	SCALE	5:1	COUNT	DESCRIPTION OF REVISIONS	DESIGNED	CHECKED	DATE
HRS HIROSE ELECTRIC CO., LTD.		APPROVED	TS. SAKATA	08.09.01	DRAWING NO.	EDC3-083022-01		
		CHECKED	TS. KUMAZAWA	08.08.29	PART NO.	DF13C-2P-1.25V(21)		
		DESIGNED	SN. KOBAYASHI	08.08.26	CODE NO.	CL536-0401-2-21		
		DRAWN	SN. KOBAYASHI	08.08.26		1/2		

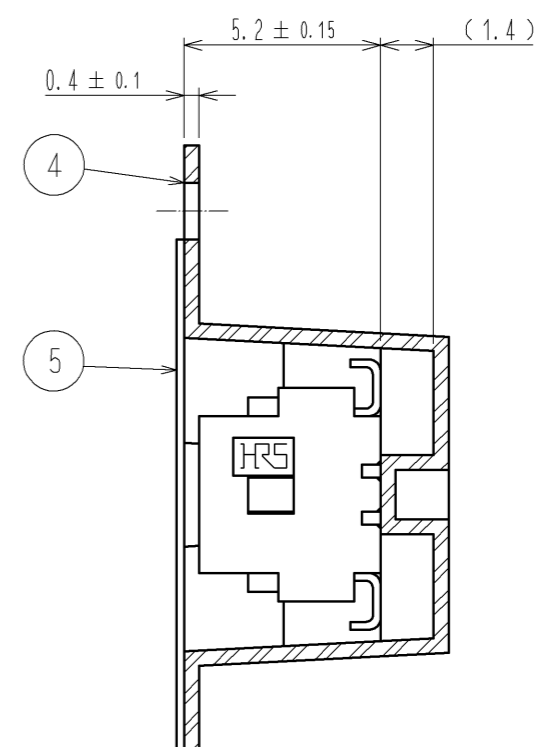
1 2 3 4 5 6 7 8

A PORTION (FREE)

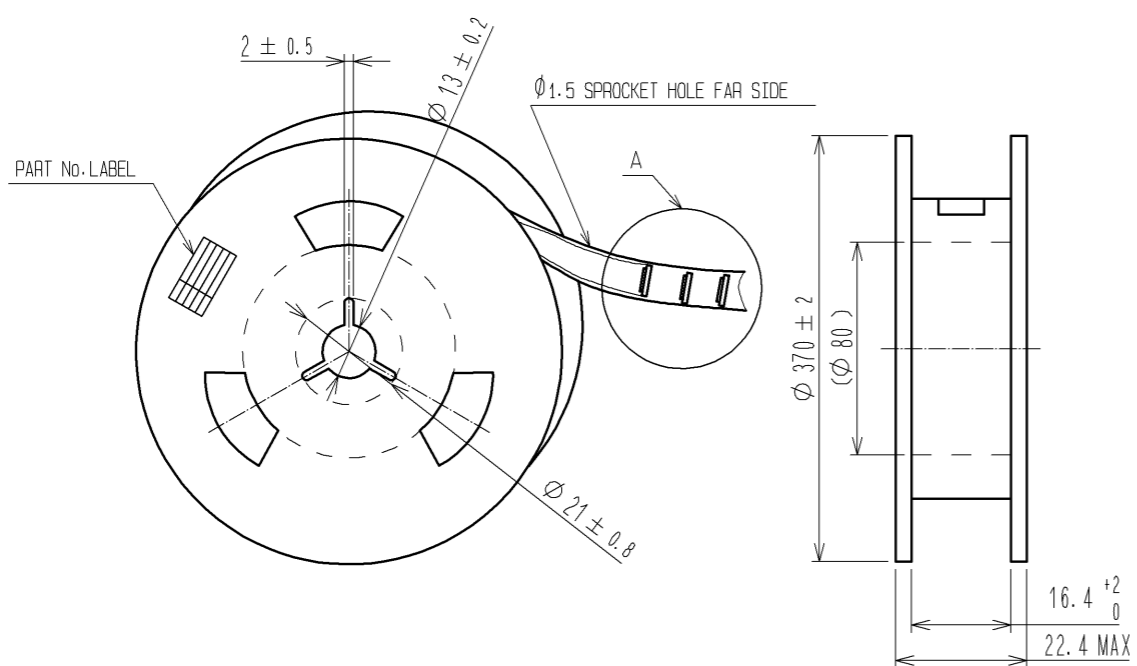


DIRECTION OF UNREELING

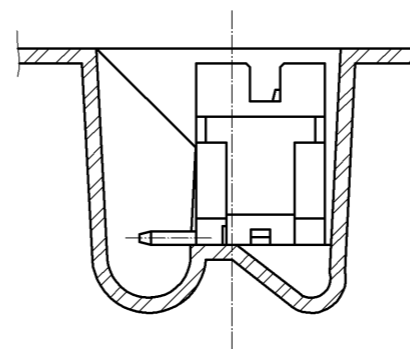
B-B



STYLE AND DIMENSION OF REEL (FREE)



C-C



6 DETAIL OF PART No. LABEL

—	SUPPLIER	
—	QUANTITY	
—	PART No.	
—	CODE No.	
—	DATE OF MANUFACTURED	
—	生産月日	年 月 日
—	図番	CL536-0401-2-21
—	品番	DF13C-2P-1.25V(21)
—	納入数量	10000
—	納入者	ヒロセ電機(株)

- NOTES 4 : 1 REEL : 1000 CONNECTORS.
- 5 : AT THE BEGINNING OF THE REEL, 30 COMPONENTS SHALL BE EMPTY.
AT THE END OF THE REEL, 20 COMPONENTS SHALL BE EMPTY.
- 6 : DETAIL OF PART No. LABEL IS WRITTEN IN JAPANESE.

HRS	DRAWING NO.	EDC3-083022-01
	PART NO.	DF13C-2P-1.25V(21)
	CODE NO.	CL536-0401-2-21
		△ 2/2