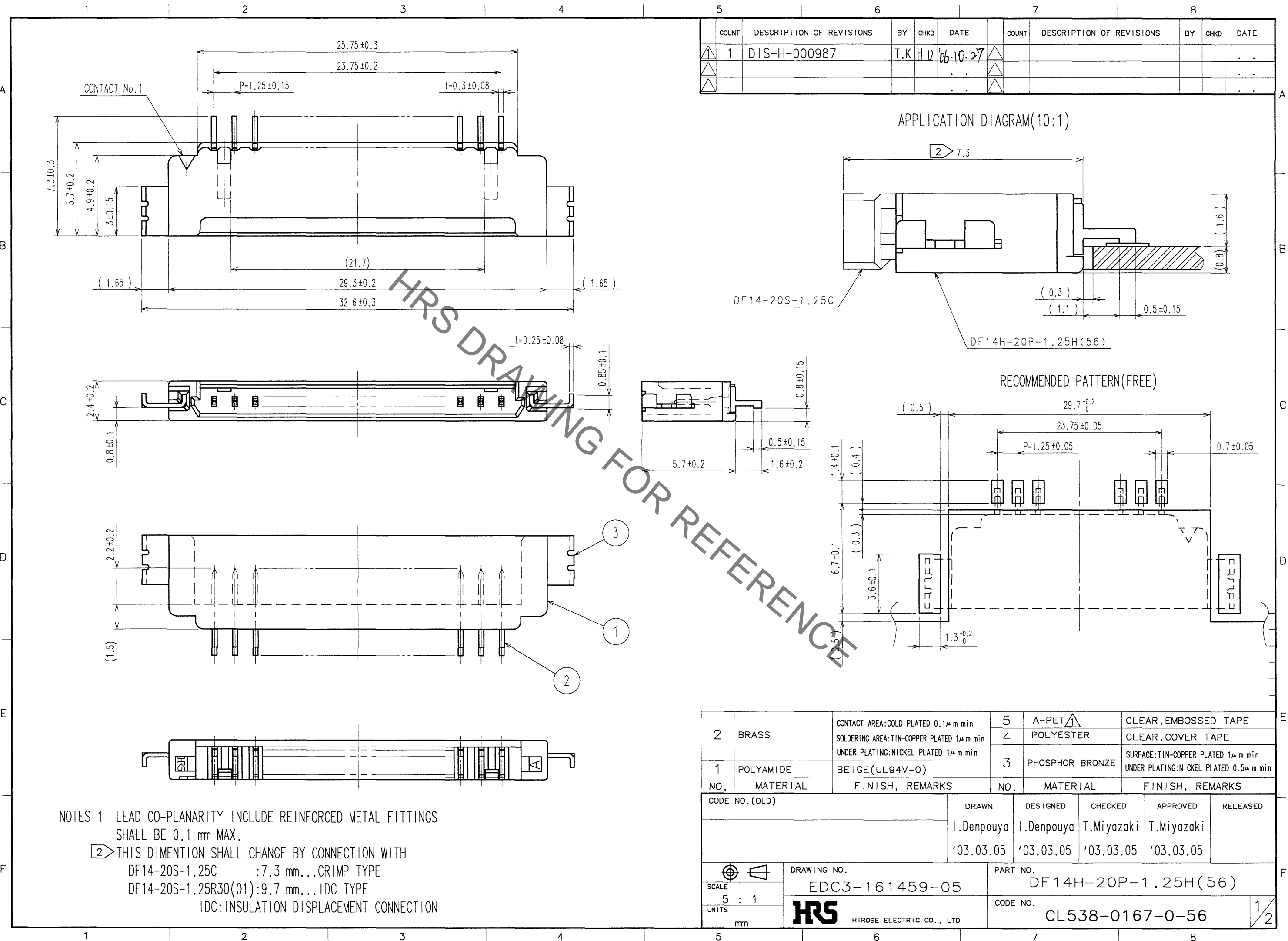


Sep.1.2020 Copyright 2020 HIROSE ELECTRIC CO., LTD. All Rights Reserved.
In case of consideration for using Automotive equipment / device which demand high reliability, kindly contact our sales window correspondents.



COUNT	DESCRIPTION OF REVISIONS	BY	CHKD	DATE	COUNT	DESCRIPTION OF REVISIONS	BY	CHKD	DATE
1	DIS-H-000987	T.K	H.V	06.10.27					

HRS DRAWING FOR REFERENCE

NOTES 1 LEAD CO-PLANARITY INCLUDE REINFORCED METAL FITTINGS SHALL BE 0.1 mm MAX.
 2 THIS DIMENTION SHALL CHANGE BY CONNECTION WITH
 DF14-20S-1.25C : 7.3 mm...CRIMP TYPE
 DF14-20S-1.25R30(01):9.7 mm...IDC TYPE
 IDC:INSULATION DISPLACEMENT CONNECTION

NO.	MATERIAL	FINISH, REMARKS	NO.	MATERIAL	FINISH, REMARKS
2	BRASS	CONTACT AREA:GOLD PLATED 0.1μ m min SOLDERING AREA:TIN-COPPER PLATED 1μ m min UNDER PLATING:NICKEL PLATED 1μ m min	5	A-PET	CLEAR,EMBOSED TAPE
1	POLYAMIDE	BEIGE(UL94V-0)	4	POLYESTER	CLEAR,COVER TAPE
			3	PHOSPHOR BRONZE	SURFACE:TIN-COPPER PLATED 1μ m min UNDER PLATING:NICKEL PLATED 0.5μ m min

CODE NO.(OLD)	DRAWN	DESIGNED	CHECKED	APPROVED	RELEASED
	I.Denpouya	I.Denpouya	T.Miyazaki	T.Miyazaki	
	'03.03.05	'03.03.05	'03.03.05	'03.03.05	

SCALE	DRAWING NO.	PART NO.
5 : 1	EDC3-161459-05	DF14H-20P-1.25H(56)
UNITS	HRS HIROSE ELECTRIC CO., LTD	CODE NO.
mm		CL538-0167-0-56

TO

