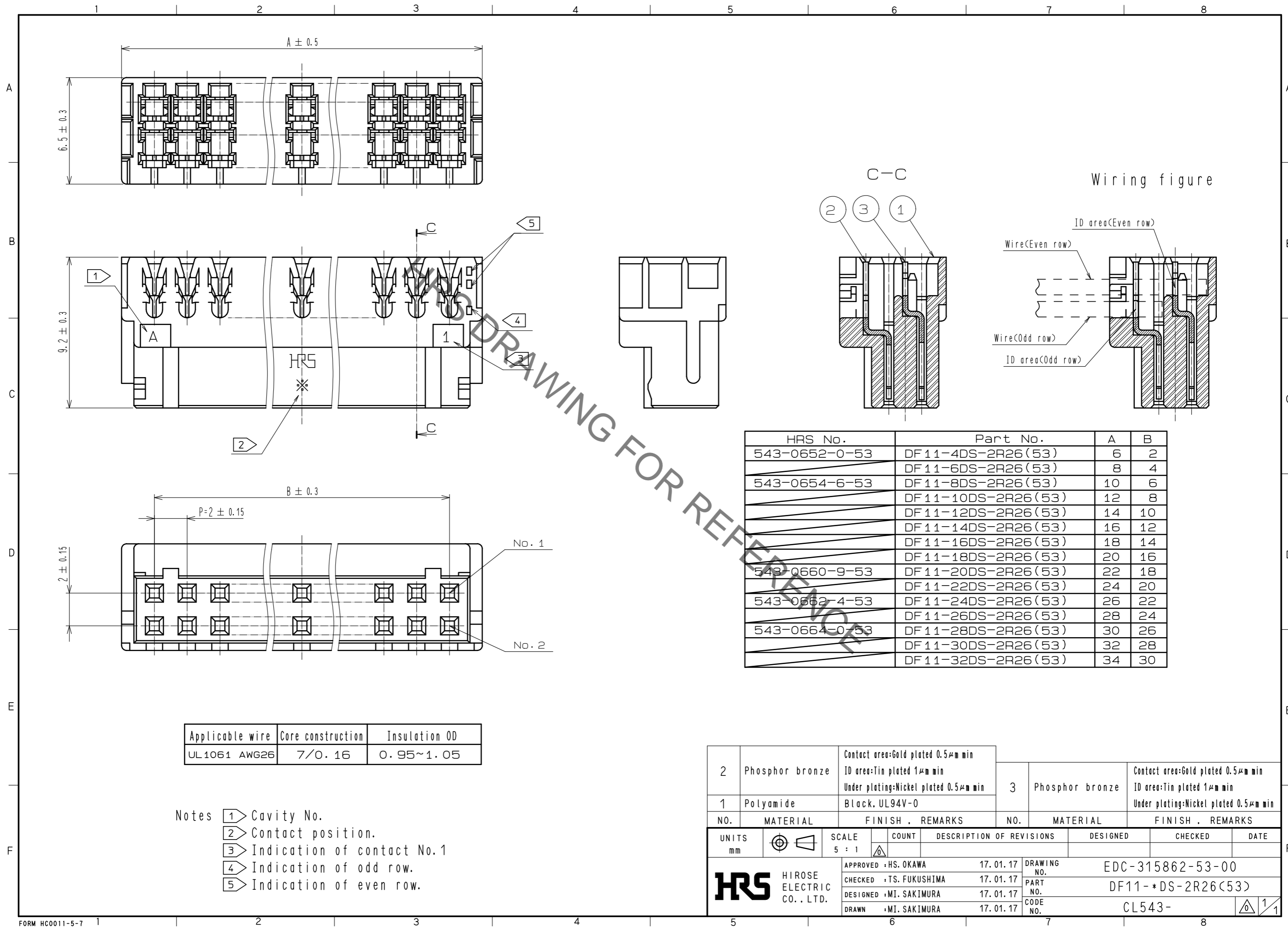


Dec.1.2019 Copyright 2019 HIROSE ELECTRIC CO., LTD. All Rights Reserved.
In case of consideration for using Automotive equipment / device which demand high reliability, kindly contact our sales window correspondents.



HRS No.	Part No.	A	B
543-0652-0-53	DF 11-4DS-2R26(53)	6	2
	DF 11-6DS-2R26(53)	8	4
543-0654-6-53	DF 11-8DS-2R26(53)	10	6
	DF 11-10DS-2R26(53)	12	8
	DF 11-12DS-2R26(53)	14	10
	DF 11-14DS-2R26(53)	16	12
	DF 11-16DS-2R26(53)	18	14
	DF 11-18DS-2R26(53)	20	16
543-0660-9-53	DF 11-20DS-2R26(53)	22	18
	DF 11-22DS-2R26(53)	24	20
543-0662-4-53	DF 11-24DS-2R26(53)	26	22
	DF 11-26DS-2R26(53)	28	24
543-0664-0-53	DF 11-28DS-2R26(53)	30	26
	DF 11-30DS-2R26(53)	32	28
	DF 11-32DS-2R26(53)	34	30

Applicable wire	Core construction	Insulation OD
UL1061 AWG26	7/0.16	0.95~1.05

- Notes
- 1 Cavity No.
 - 2 Contact position.
 - 3 Indication of contact No.1
 - 4 Indication of odd row.
 - 5 Indication of even row.

2	Phosphor bronze	Contact area:Gold plated 0.5μm min ID area:Tin plated 1μm min Under plating:Nickel plated 0.5μm min	3	Phosphor bronze	Contact area:Gold plated 0.5μm min ID area:Tin plated 1μm min Under plating:Nickel plated 0.5μm min
1	Polyamide	Black, UL94V-0			
NO.	MATERIAL	FINISH . REMARKS	NO.	MATERIAL	FINISH . REMARKS
UNITS mm		SCALE 5 : 1	COUNT	DESCRIPTION OF REVISIONS	
DESIGNED		CHECKED		DATE	
APPROVED : HS. OKAWA		17.01.17		DRAWING NO. EDC-315862-53-00	
CHECKED : TS. FUKUSHIMA		17.01.17		PART NO. DF11-*DS-2R26(53)	
DESIGNED : MI. SAKIMURA		17.01.17		CODE NO. CL543-	
DRAWN : MI. SAKIMURA		17.01.17			