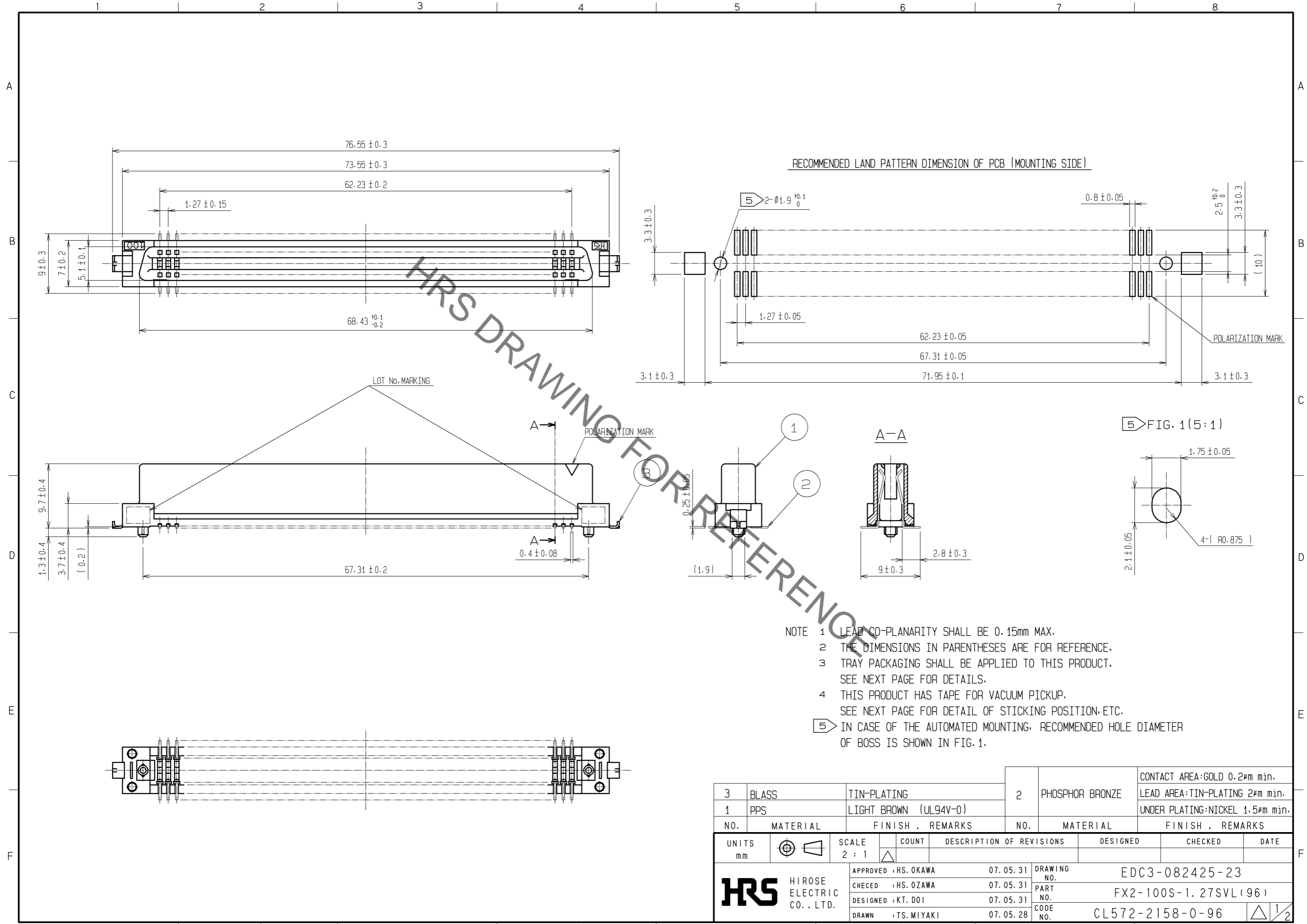


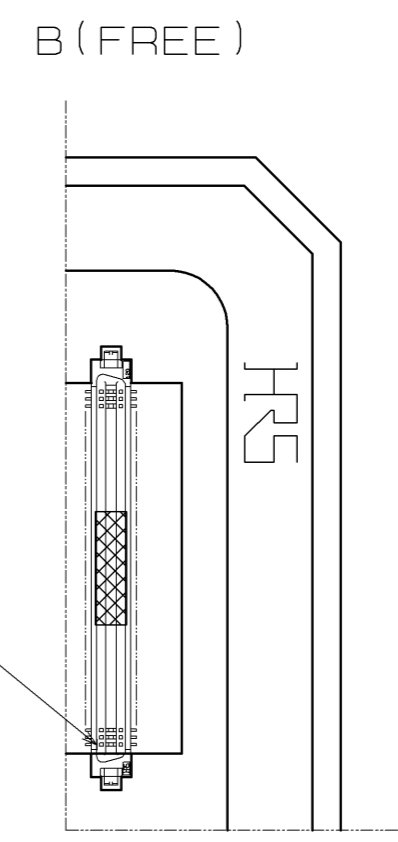
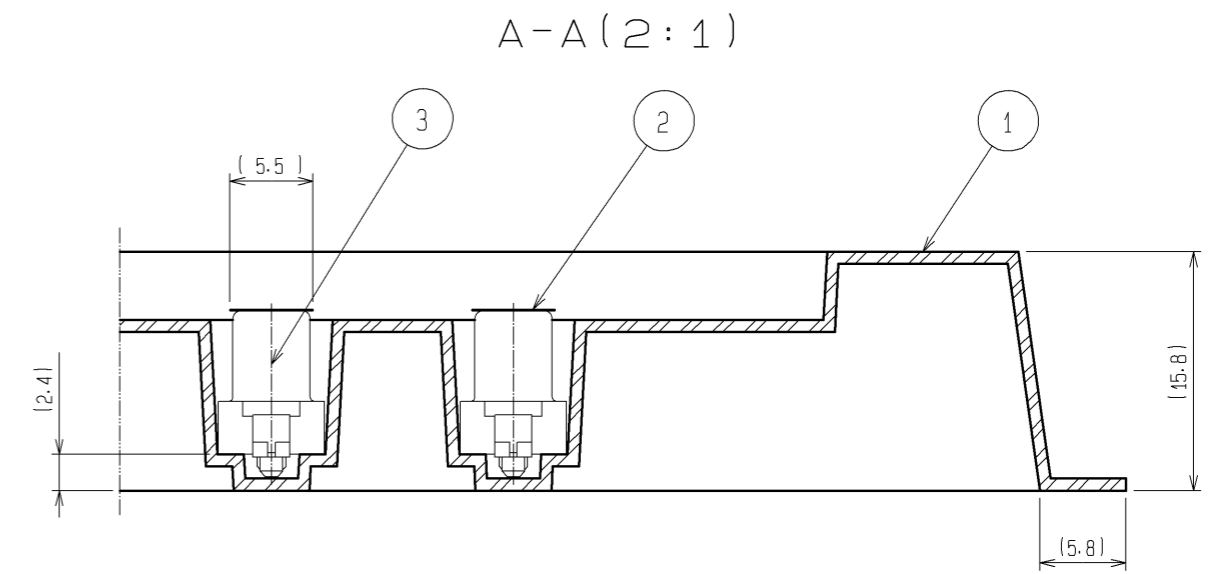
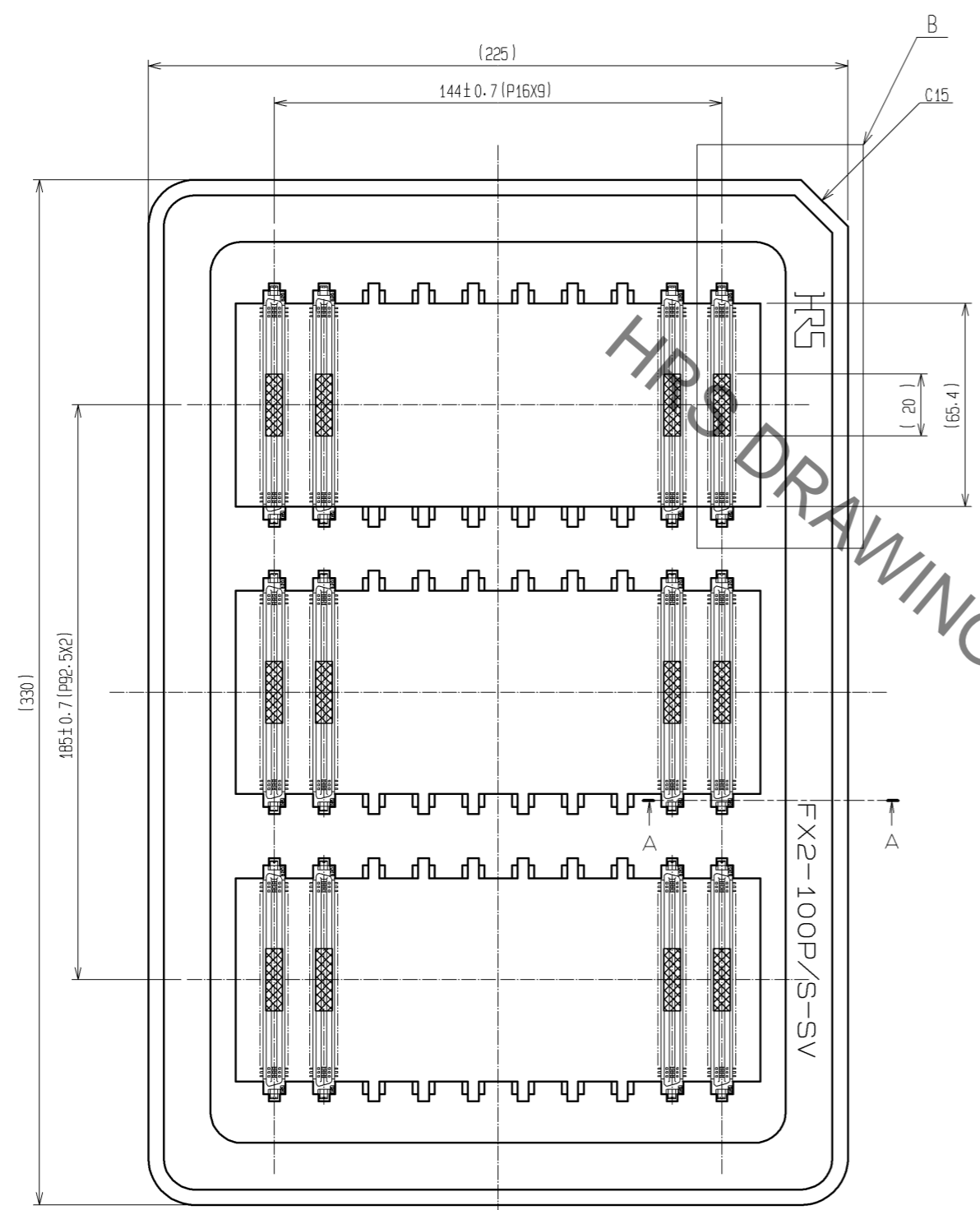
Aug.1.2021 Copyright 2021 HIROSE ELECTRIC CO., LTD. All Rights Reserved.  
In case of consideration for using Automotive equipment / device which demand high reliability, kindly contact our sales window correspondents.



3	BLASS	TIN-PLATING	2	PHOSPHOR BRONZE	CONTACT AREA:GOLD 0.2µm min.		
1	PPS	LIGHT BROWN (UL94V-0)			LEAD AREA:TIN-PLATING 2µm min.		
					UNDER PLATING:NICKEL 1.5µm min.		
NO.	MATERIAL	FINISH . REMARKS	NO.	MATERIAL	FINISH . REMARKS		
UNITS		SCALE	COUNT	DESCRIPTION OF REVISIONS	DESIGNED	CHECKED	DATE
mm		2 : 1					
<b>HRS</b> HIROSE ELECTRIC CO., LTD.		APPROVED : HS. OKAWA	07.05.31	DRAWING NO.	EDC3-082425-23		
		CHECED : HS. OZAWA	07.05.31	PART NO.	FX2-100S-1.27SVL (96)		
		DESIGNED : KT. DOI	07.05.31	CODE NO.	CL572-2158-0-96		
		DRAWN : TS. MIYAKI	07.05.28				

Aug.1.2021 Copyright 2021 HIROSE ELECTRIC CO., LTD. All Rights Reserved.  
In case of consideration for using Automotive equipment / device which demand high reliability, kindly contact our sales window correspondents.

DRAWING FOR PACKING



- NOTE
- 1 TRAY:30 CONNECTORS
  - 2 SETTING POSITION OF CONNECTORS IN THE TRAY SHALL BE ARRANGED IN ACCORDANCE WITH DRAWING.
  - 3 REMOVE THE VACUUM PICK-UP TAPE AFTER MOUNTING THE CONNECTOR.
  - 4 THE DIMENSIONS IN PARENTHESES ARE FOR REFERENCE.

2	POLYIMIDE	(TAPE FOR VACUUM PICK-UP)			
1	PS	TRAY	3		(CONNECTOR)
NO.	MATERIAL	FINISH . REMARKS	NO.	MATERIAL	FINISH . REMARKS
UNITS	mm	SCALE	1 : 2	COUNT	DESCRIPTION OF REVISIONS
					DESIGNED
					CHECKED
					DATE
HIROSE ELECTRIC CO., LTD.		APPROVED : HS. OKAWA CHECED : HS. OZAWA DESIGNED : KT. DOI DRAWN : TS. MIYAKI	07.05.31 07.05.31 07.05.31 07.05.28	DRAWING NO. PART NO. CODE NO.	EDC3-082425-23 FX2-100S-1.27SVL(96) CL572-2158-0-96