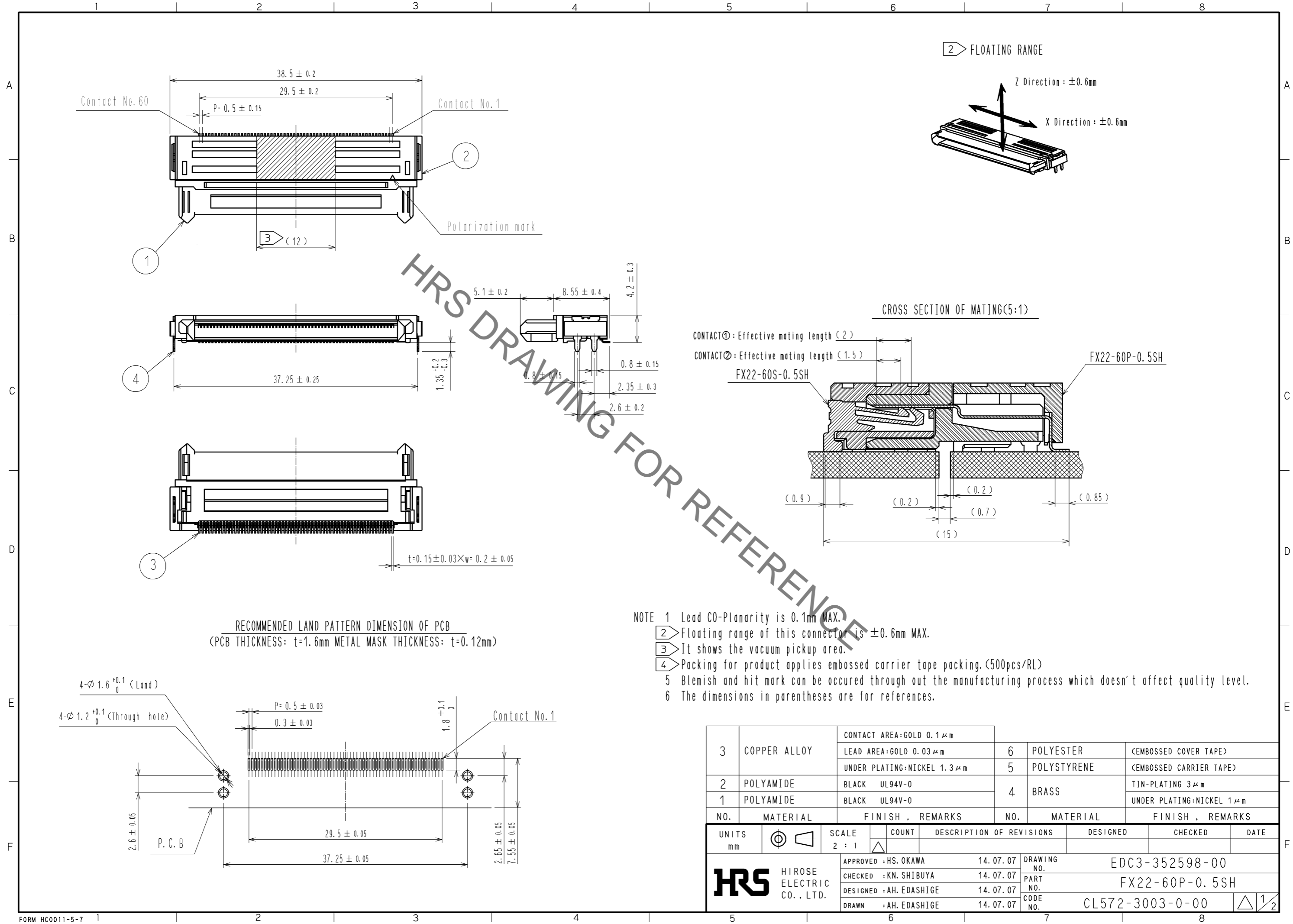


Apr.1.2020 Copyright 2020 HIROSE ELECTRIC CO., LTD. All Rights Reserved.
In case of consideration for using Automotive equipment / device which demand high reliability, kindly contact our sales window correspondents.



- NOTE 1 Lead CO-Planarity is 0.1mm MAX.
 ② Floating range of this connector is $\pm 0.6\text{mm}$ MAX.
 ③ It shows the vacuum pickup area.
 ④ Packing for product applies embossed carrier tape packing. (500pcs/RL)
 5 Blemish and hit mark can be occurred through out the manufacturing process which doesn't affect quality level.
 6 The dimensions in parentheses are for references.

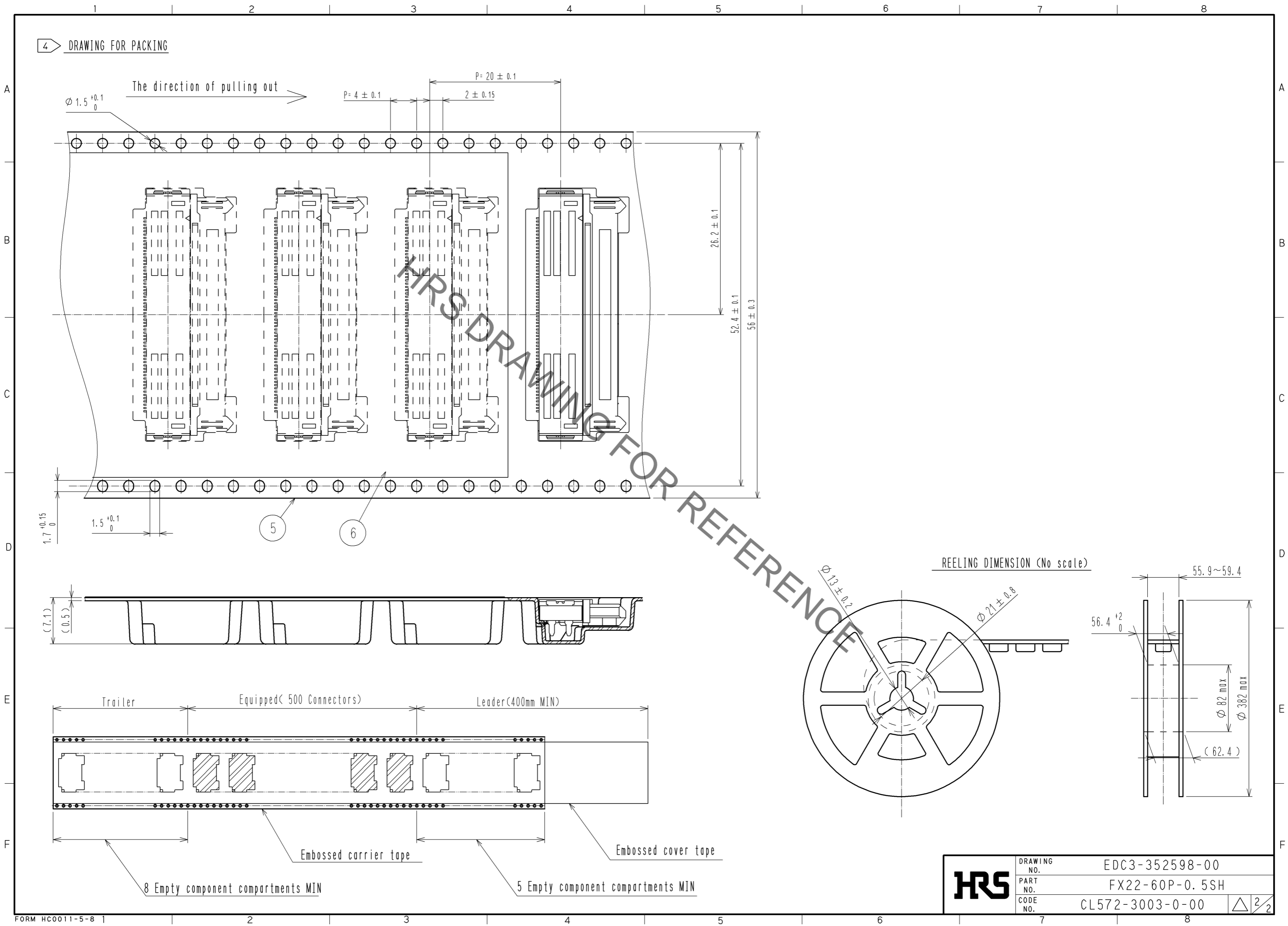
NO.	MATERIAL	FINISH	REMARKS	NO.	MATERIAL	FINISH	REMARKS
3	COPPER ALLOY		CONTACT AREA: GOLD 0.1 μm LEAD AREA: GOLD 0.03 μm UNDER PLATING: NICKEL 1.3 μm	6	POLYESTER		(EMBOSSED COVER TAPE)
2	POLYAMIDE	BLACK	UL94V-0	5	POLYSTYRENE		(EMBOSSED CARRIER TAPE)
1	POLYAMIDE	BLACK	UL94V-0	4	BRASS		TIN-PLATING 3 μm UNDER PLATING: NICKEL 1 μm

UNITS	SCALE	COUNT	DESCRIPTION OF REVISIONS	DESIGNED	CHECKED	DATE
mm	2:1	△				

APPROVED	: HS. OKAWA	14.07.07	DRAWING NO.	EDC3-352598-00
CHECKED	: KN. SHIBUYA	14.07.07	PART NO.	FX22-60P-0.5SH
DESIGNED	: AH. EDASHIGE	14.07.07	CODE NO.	CL572-3003-0-00
DRAWN	: AH. EDASHIGE	14.07.07		

Apr.1.2020 Copyright 2020 HIROSE ELECTRIC CO., LTD. All Rights Reserved.
 In case of consideration for using Automotive equipment / device which demand high reliability, kindly contact our sales window correspondents.

4 DRAWING FOR PACKING



REELING DIMENSION (No scale)

HRS	DRAWING NO.	EDC3-352598-00	△ 2/2
	PART NO.	FX22-60P-0.5SH	
	CODE NO.	CL572-3003-0-00	