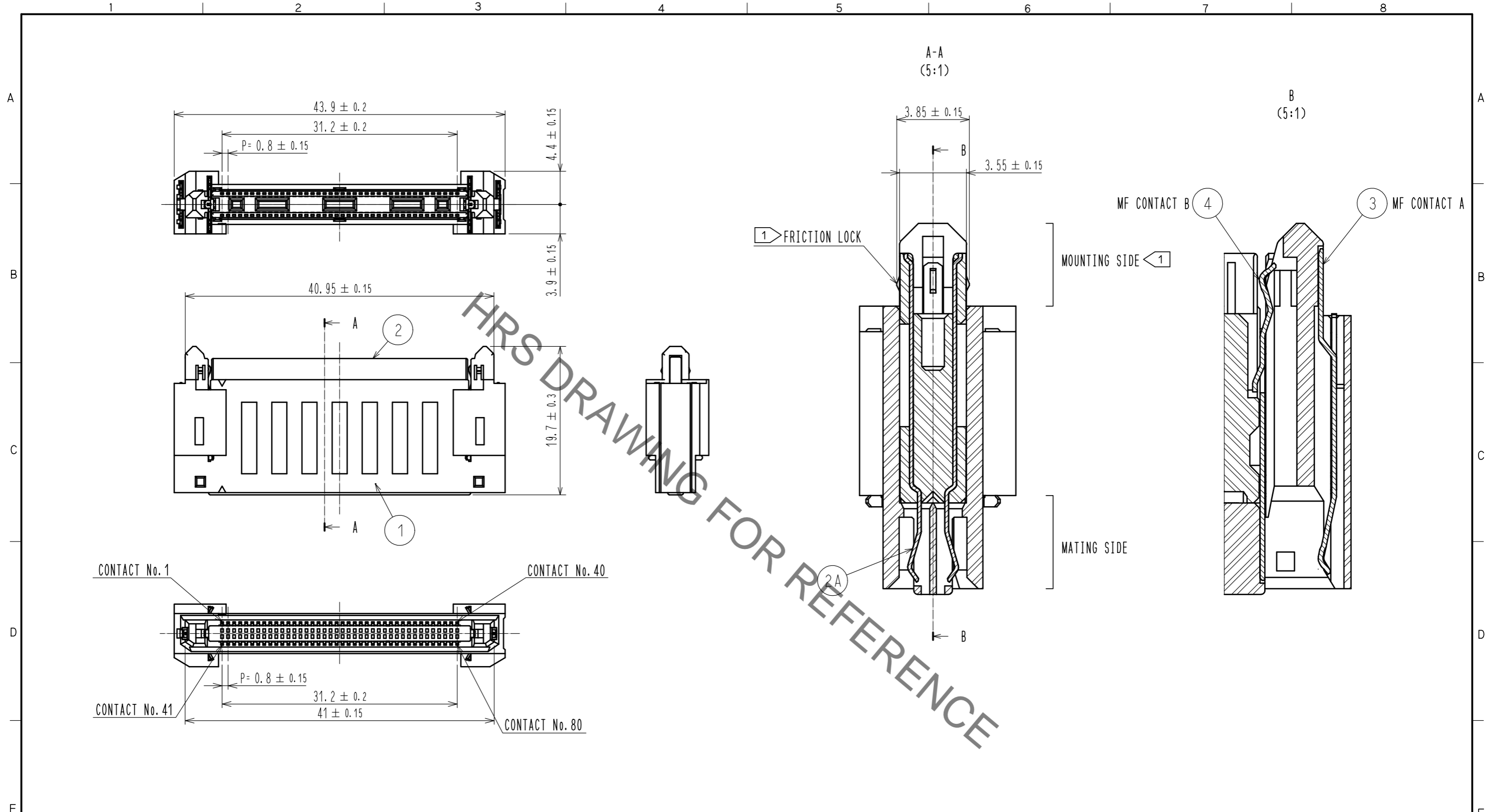


Apr.1.2020 Copyright 2020 HIROSE ELECTRIC CO., LTD. All Rights Reserved.
In case of consideration for using Automotive equipment / device which demand high reliability, kindly contact our sales window correspondents.



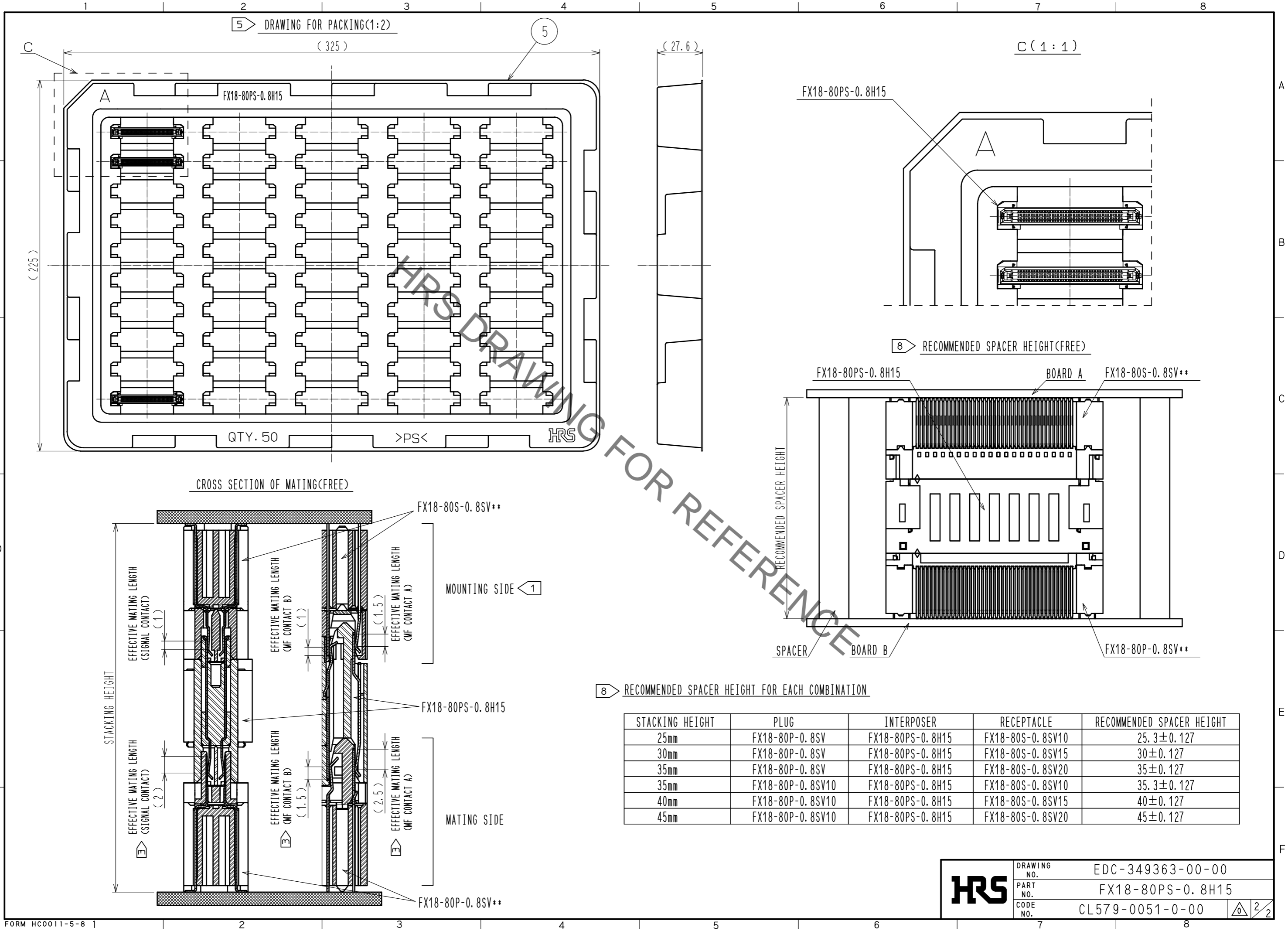
- NOTE 1 MOUNTING SIDE IS CONNECTED TO THE RECEPTACLE:FX18-80S-0.8SV** AND STABILIZED WITH FRICTION LOCKS.
THE INSERTION/WITHDRAWAL IS ALLOWED UP TO 5 TIMES.
- 2 ALWAYS CONNECT THE MOUNTING SIDE TO THE RECEPTACLE FIRST AND THEN MATE THE MATING SIDE TO FX18-80P-0.8SV**.
- 3 THE MATING SIDE HAS SEQUENTIAL CONTACT STRUCTURE AS FOLLOWS.(MF CONTACT A=>SIGNAL CONTACT=>MF CONTACT B)
WHEN USING THIS SEQUENTIAL STRUCTURE, PLEASE AVOID ANGLED INSERTION.
- 4 MF CONTACT A AND MF CONTACT B CAN BE USED AS POWER SUPPLY CONTACT. (3A/PIN MAX)
- 5 THIS IS PACKAGED IN TRAY.(50pcs/TRAY)
- 6 BLEMISH AND HIT MARK CAN BE OCCURED THROUGH OUT THE MANUFACTURING PROCESS WHICH DOESN' T AFFECT QUALITY LEVEL.
- 7 THE DIMENSIONS IN PARENTHESES ARE FOR REFERENCES.
- 8 RECOMMENDED SPACER HEIGHT FOR EACH COMBINATION. SPACERS ARE REQUIRED TO PROTECT THE SOLDER JOINTS FROM EXCESSIVE STRESS.

NO.	MATERIAL	FINISH	REMARKS	NO.	MATERIAL	FINISH	REMARKS
2A	COPPER ALLOY		CONTACT AREA:GOLD 0.1 μm UNDER PLATING:NICKEL 1.3 μm	5	POLYSTYRENE		
2	PBT	BLACK	UL94V-0	4	COPPER ALLOY		CONTACT AREA:GOLD 0.1 μm UNDER PLATING:NICKEL 1.3 μm
1	POLYAMIDE	BLACK	UL94V-0	3	COPPER ALLOY		CONTACT AREA:GOLD 0.1 μm UNDER PLATING:NICKEL 1.3 μm

UNITS	SCALE	COUNT	DESCRIPTION OF REVISIONS	DESIGNED	CHECKED	DATE
mm	2 : 1	△	APPROVED : HS. OKAWA 15.04.10 CHECKED : HT. YAMAGUCHI 15.04.10 DESIGNED : TH. SANO 15.04.09 DRAWN : TH. SANO 15.04.09			

DRAWING NO.	PART NO.	CODE NO.
EDC-349363-00-00	FX18-80PS-0.8H15	CL579-0051-0-00

Apr.1.2020 Copyright 2020 HIROSE ELECTRIC CO., LTD. All Rights Reserved.
 In case of consideration for using Automotive equipment / device which demand high reliability, kindly contact our sales window correspondents.



HRS	DRAWING NO.	EDC-349363-00-00
	PART NO.	FX18-80PS-0.8H15
	CODE NO.	CL579-0051-0-00
		2/2