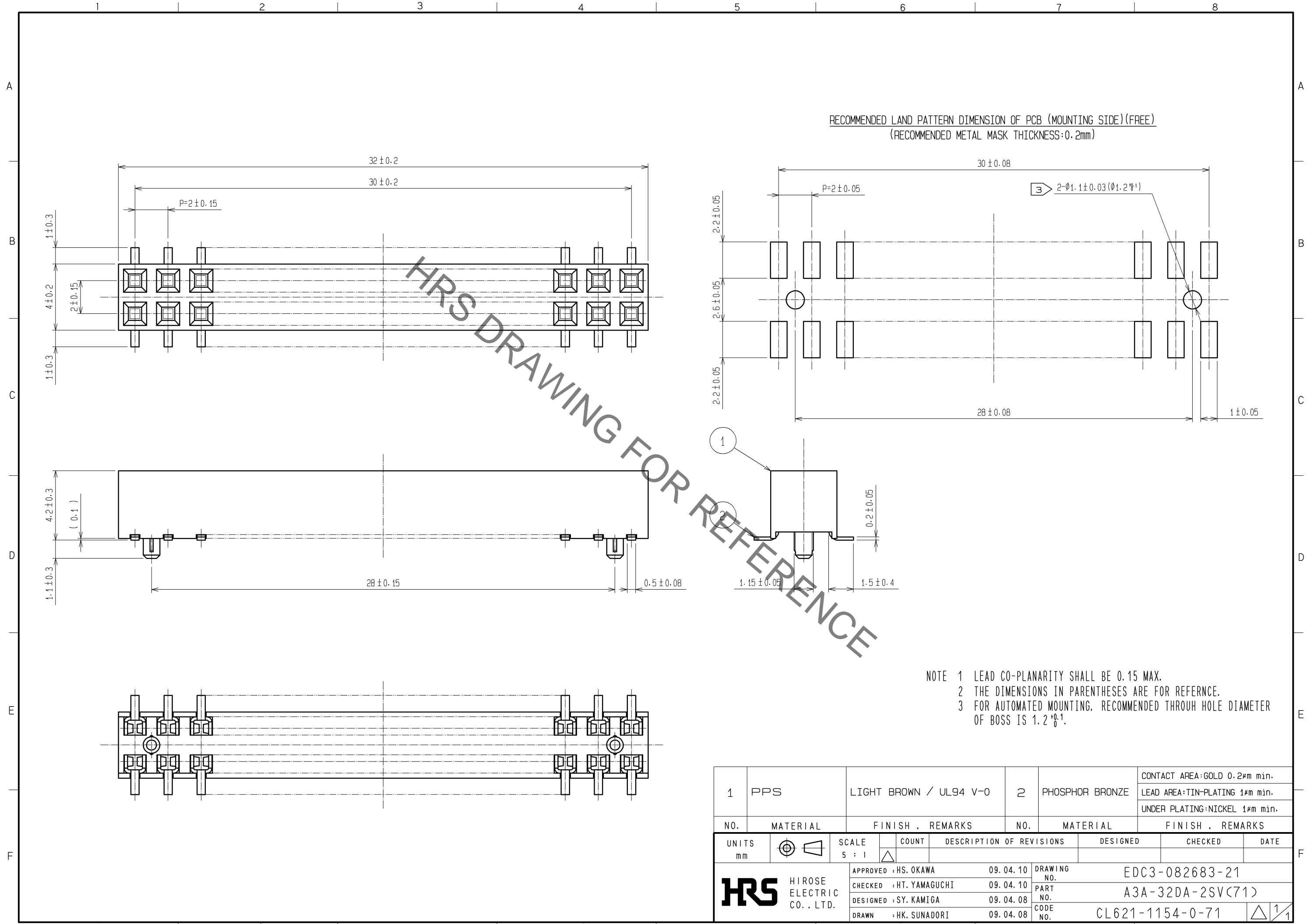


Jan.1.2020 Copyright 2020 HIROSE ELECTRIC CO., LTD. All Rights Reserved.
In case of consideration for using Automotive equipment / device which demand high reliability, kindly contact our sales window correspondents.



| | | | | | |
|--------------------------------------|----------|-------------------------|------------|--------------------------|--|
| 1 | PPS | LIGHT BROWN / UL94 V-0 | 2 | PHOSPHOR BRONZE | CONTACT AREA: GOLD 0.2μm min. LEAD AREA: TIN-PLATING 1μm min. UNDER PLATING: NICKEL 1μm min. |
| NO. | MATERIAL | FINISH . REMARKS | NO. | MATERIAL | FINISH . REMARKS |
| UNITS mm | | SCALE 5 : 1 | COUNT | DESCRIPTION OF REVISIONS | DESIGNED |
| HRS HIROSE ELECTRIC CO., LTD. | | APPROVED : HS. OKAWA | 09. 04. 10 | DRAWING NO. | EDC3-082683-21 |
| | | CHECKED : HT. YAMAGUCHI | 09. 04. 10 | PART NO. | A3A-32DA-2SV(71) |
| | | DESIGNED : SY. KAMIGA | 09. 04. 08 | CODE NO. | CL621-1154-0-71 |
| | | DRAWN : HK. SUNADORI | 09. 04. 08 | | 1/1 |