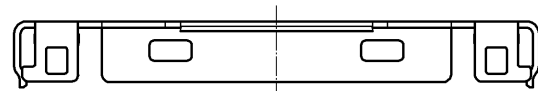
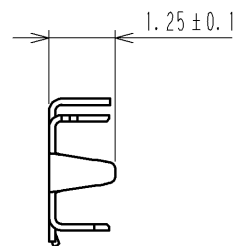
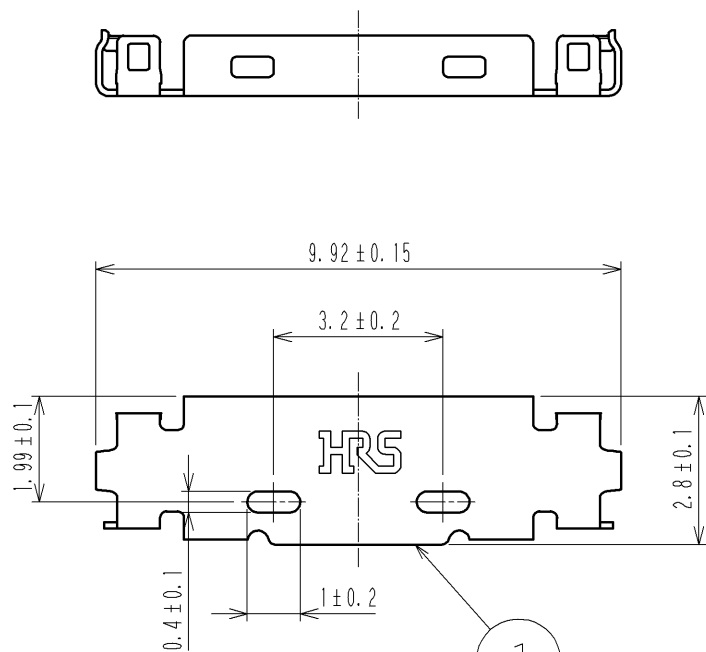
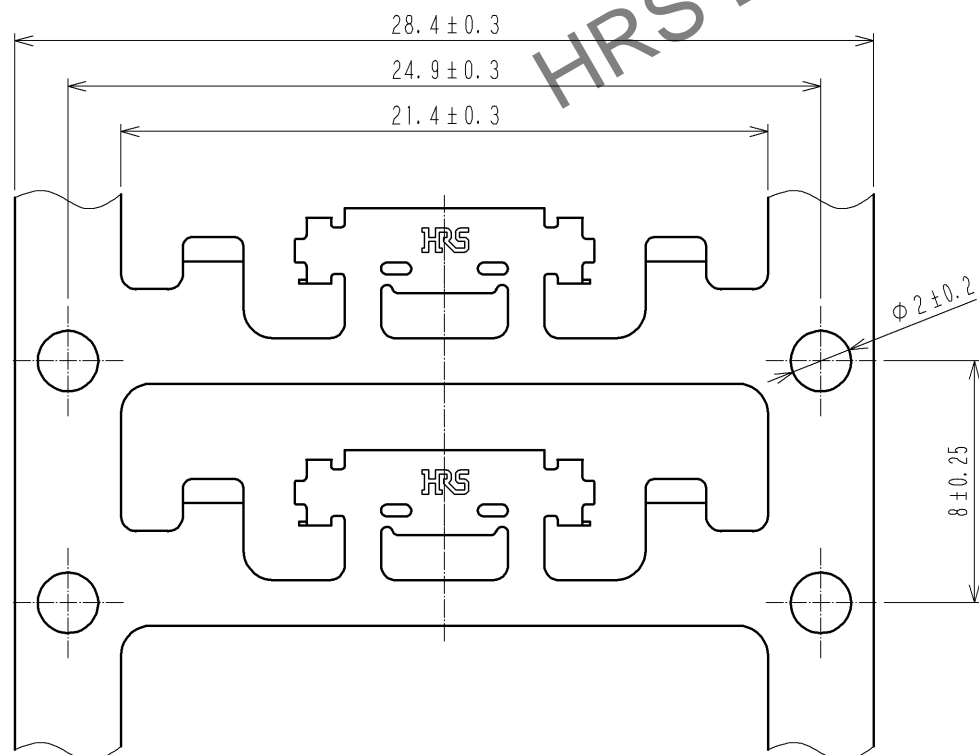


Apr.1.2024 Copyright 2024 HIROSE ELECTRIC CO., LTD. All Rights Reserved.
In case of consideration for using Automotive equipment / device which demand high reliability, kindly contact our sales window correspondents.

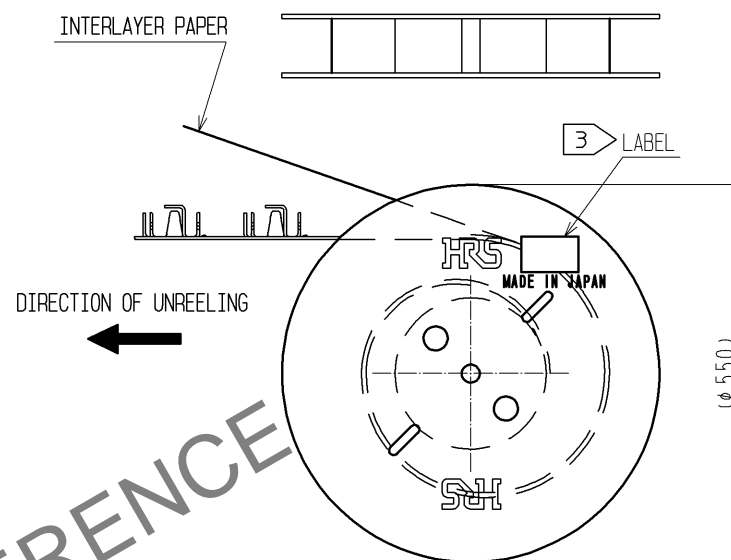


△ CAREER STATE DRAWING(FREE)



↑
DIRECTION OF UNREELING

REEL STATE DRAWING(FREE)

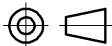




- NOTES 1.PER REEL : 10000 COMPARTMENTS
2.THE ASSEMBLY IS COMPLETED BY COMBINING TWO PARTS「CONNECTOR UNIT, AND METAL SHIELDING」.
REFER TO THE TABLE FOR EACH ITEM No. PART NAME, PART No AND CODE No.

ITEM No.	PART NAME	PART No.	CODE No.
-	CONNECTOR UNIT	DF36C-15P-0.4SD△△	CL662-4035-2-00△△
1	METAL SHIELDING	DF36A-15P-SHL	CL662-4511-7-00△

3 LABEL DETAILS

HRS		INSPECTION 検査
CODE No. 品名コード	CL662-4511-7	
PART NO. 品名	DF36A-15P-SHL	
QTY 数量	10,000 PCS	
PECULIAR 仕様		
Lot No		
SPLICE 継ぎ目		

				1	PHOSPHOR BRONZE	WHOLE AREA : Sn PLATING 1μm min UNDER PLATING : Cu PLATING 0.2μm min		
NO.	MATERIAL	FINISH , REMARKS			NO.	MATERIAL	FINISH , REMARKS	
UNITS mm		SCALE FREE	COUNT  4	DESCRIPTION OF REVISIONS DIS-H-003435		DESIGNED HY. SHIOZAWA	CHECKED HK. UMEHARA	DATE 08. 11. 05
 HIROSE ELECTRIC CO., LTD.		APPROVED : TS. SAKATA		08. 05. 12	DRAWING NO. EDC3-317913-00			
		CHECED : HK. UMEHARA		08. 05. 10	PART NO. DF36A-15P-SHL			
		DESIGNED : HY. SHIOZAWA		08. 05. 09	CODE NO. CL662-4511-7-00			
		DRAWN : SI. ISHII		08. 05. 09	