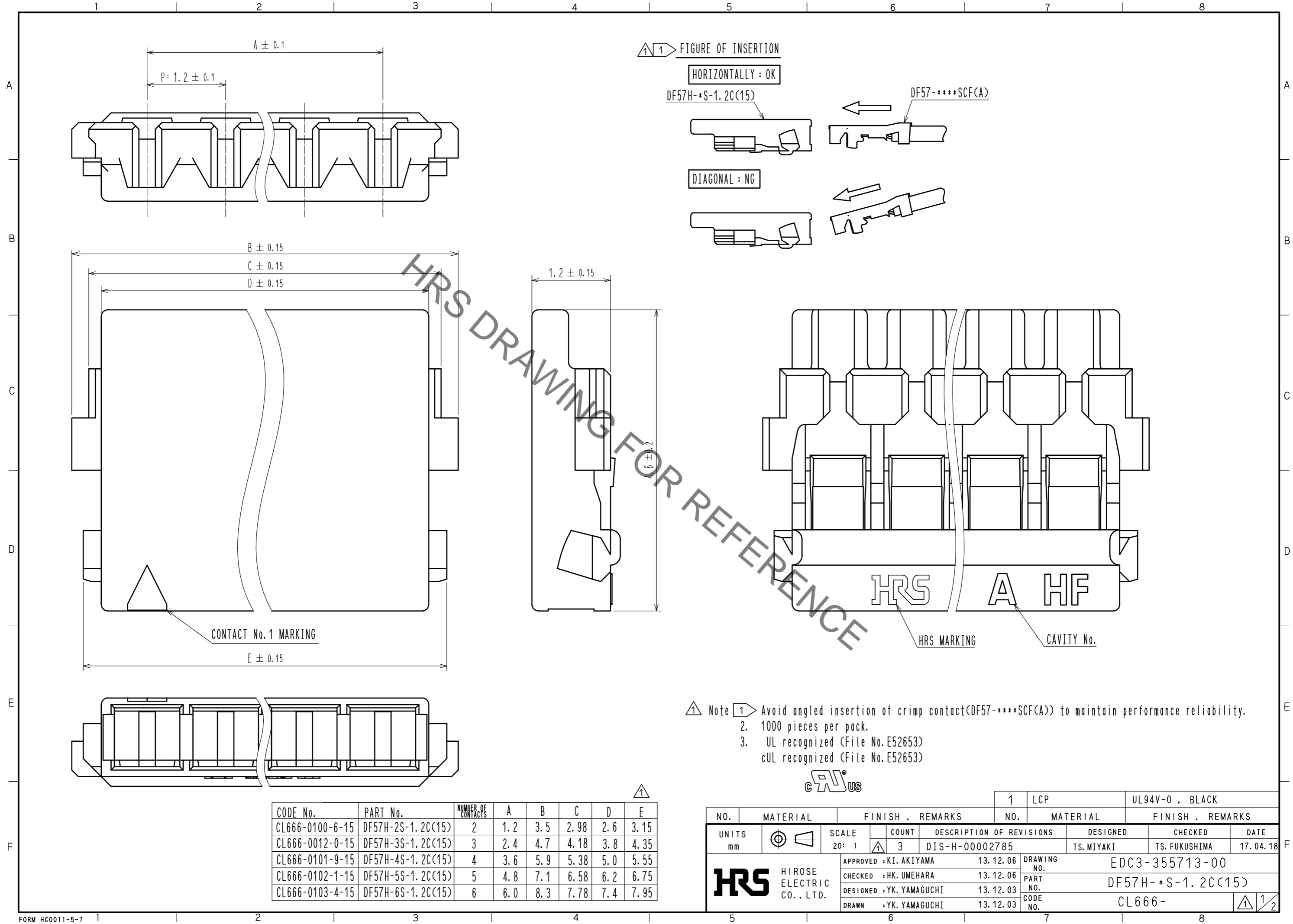


Jun.1.2020 Copyright 2020 HIROSE ELECTRIC CO., LTD. All Rights Reserved.
In case of consideration for using Automotive equipment / device which demand high reliability, kindly contact our sales window correspondents.



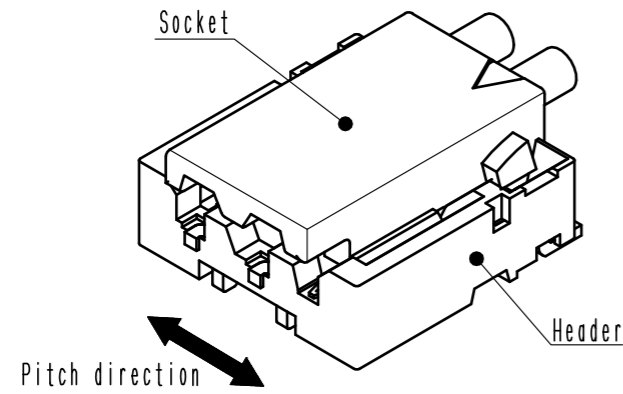
CODE No.	PART No.	NUMBER OF CONTACTS	A	B	C	D	E
CL666-0100-6-15	DF57H-2S-1.2C(15)	2	1.2	3.5	2.98	2.6	3.15
CL666-0012-0-15	DF57H-3S-1.2C(15)	3	2.4	4.7	4.18	3.8	4.35
CL666-0101-9-15	DF57H-4S-1.2C(15)	4	3.6	5.9	5.38	5.0	5.55
CL666-0102-1-15	DF57H-5S-1.2C(15)	5	4.8	7.1	6.58	6.2	6.75
CL666-0103-4-15	DF57H-6S-1.2C(15)	6	6.0	8.3	7.78	7.4	7.95

NO.		MATERIAL		FINISH . REMARKS		1	LCP	UL94V-0 . BLACK	
UNITS mm		SCALE 20: 1		COUNT 3	DESCRIPTION OF REVISIONS DIS-H-00002785	DESIGNED TS.MIYAKI		CHECKED TS.FUKUSHIMA	DATE 17.04.18
APPROVED : KI. AKIYAMA		13.12.06		DRAWING NO. EDC3-355713-00					
CHECKED : HK. UMEHARA		13.12.06		PART NO. DF57H-*S-1.2C(15)					
DESIGNED : YK. YAMAGUCHI		13.12.03		CODE NO. CL666-					
DRAWN : YK. YAMAGUCHI		13.12.03							

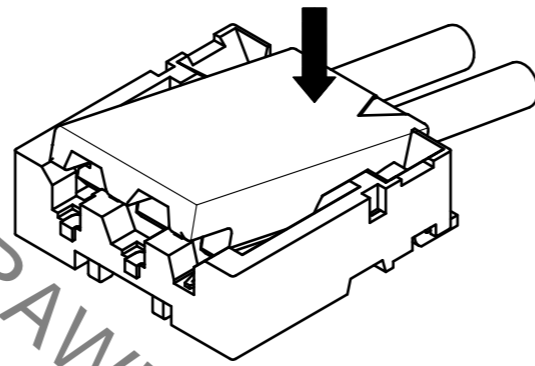
DF57 Series Mating / Unmating Operation Instruction (For DF57 series)

Mating

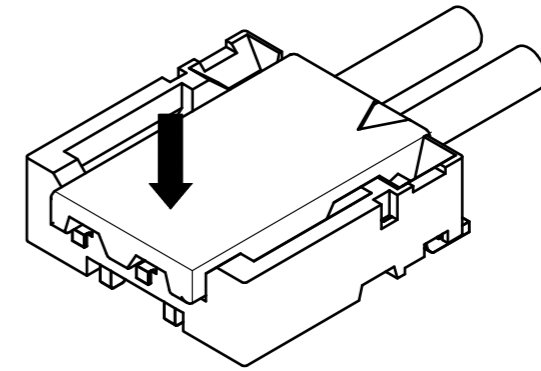
① By positioning the convexity of the socket sides to the header concavity, align the centers of the socket and the header in pitch direction.



② Slightly press the socket down at cable side to tilted angle.

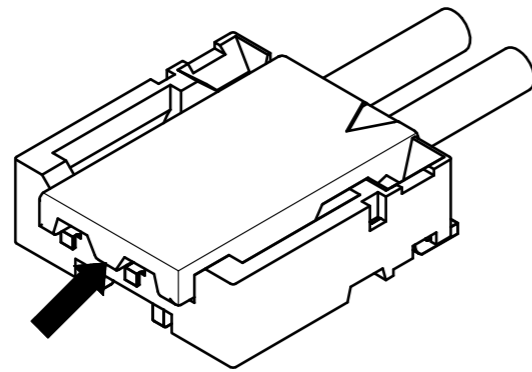


③ Press down at the lever side with stabilizing the cable side to insert. Mating completes.

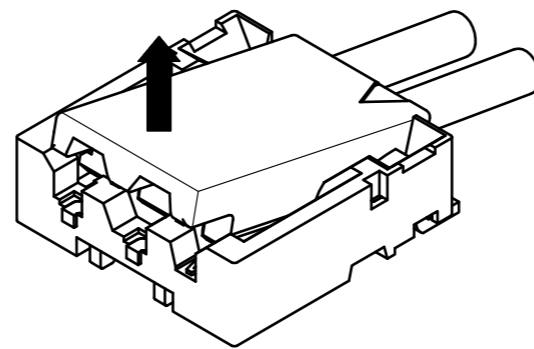


Unmating

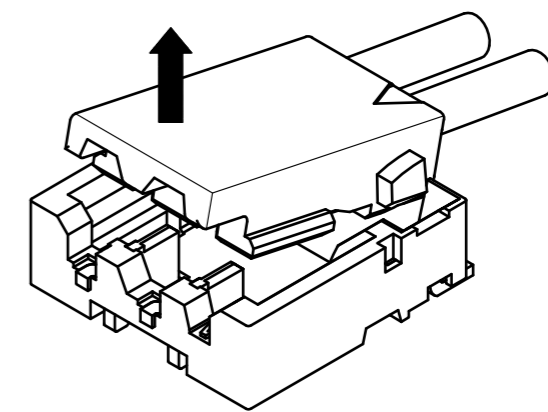
① Hook the lever with finger nail.



② Lift up to the upper direction and friction lock is released.



③ Lift up to the upper direction and positive lock is released. Removal completes.



HRS DRAWING FOR REFERENCE

HRS	DRAWING NO.	EDC3-355713-00
	PART NO.	DF57H-*S-1.2C<15>
	CODE NO.	CL666-0012-0-15
		2/2

Jun.1.2020 Copyright 2020 HIROSE ELECTRIC CO., LTD. All Rights Reserved. In case of consideration for using Automotive equipment / device which demand high reliability, kindly contact our sales window correspondents.