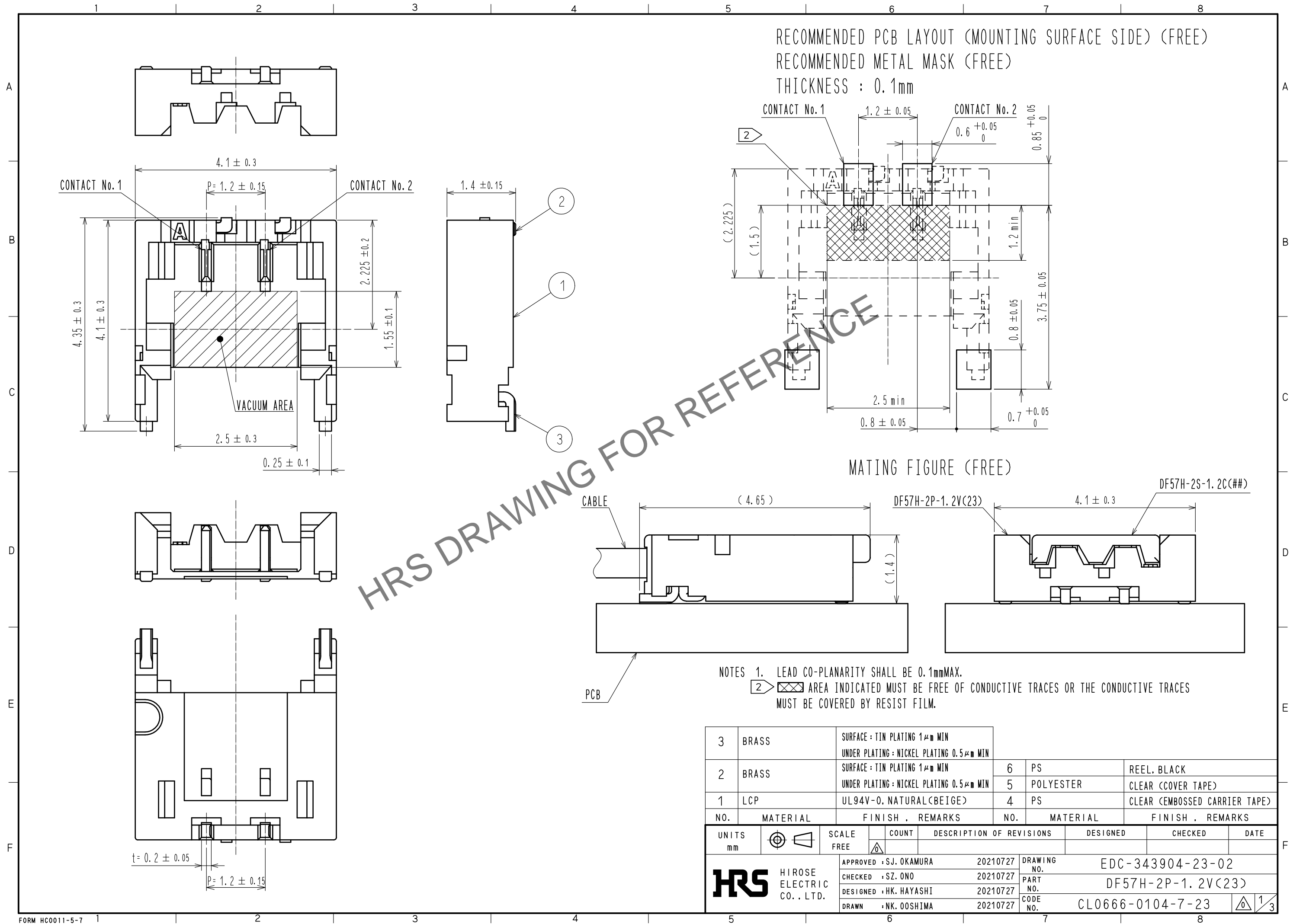
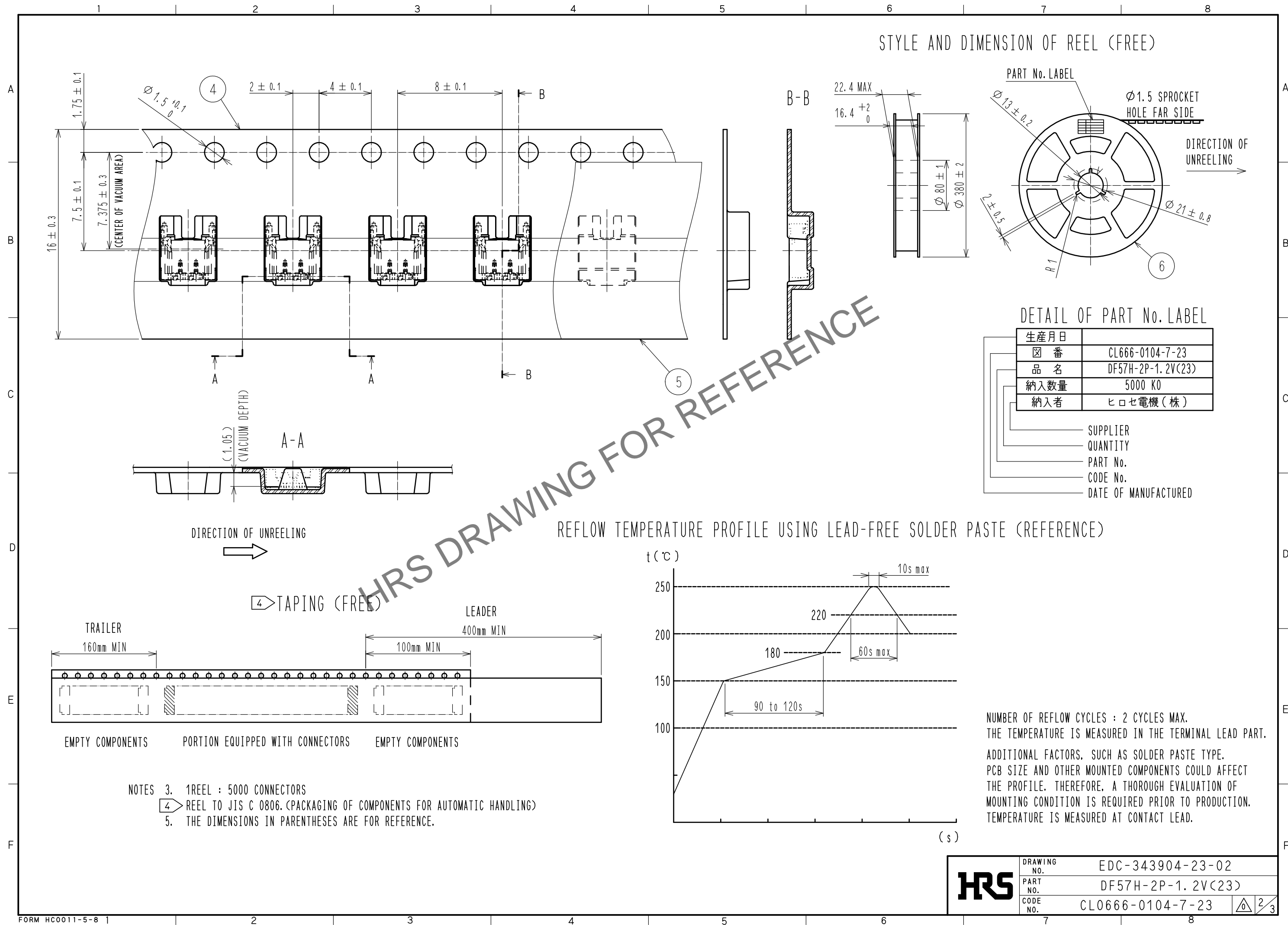


Apr.1.2024 Copyright 2024 HIROSE ELECTRIC CO., LTD. All Rights Reserved.  
In case of consideration for using Automotive equipment / device which demand high reliability, kindly contact our sales window correspondents.



Apr.1.2024 Copyright 2024 HIROSE ELECTRIC CO., LTD. All Rights Reserved.  
In case of consideration for using Automotive equipment / device which demand high reliability, kindly contact our sales window correspondents.

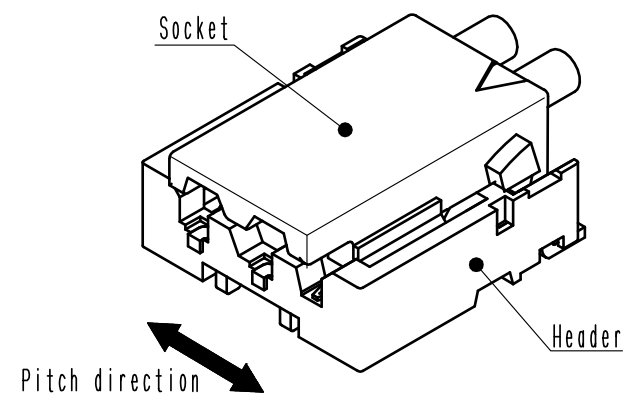


Apr.1.2024 Copyright 2024 HIROSE ELECTRIC CO., LTD. All Rights Reserved.  
In case of consideration for using Automotive equipment / device which demand high reliability, kindly contact our sales window correspondents.

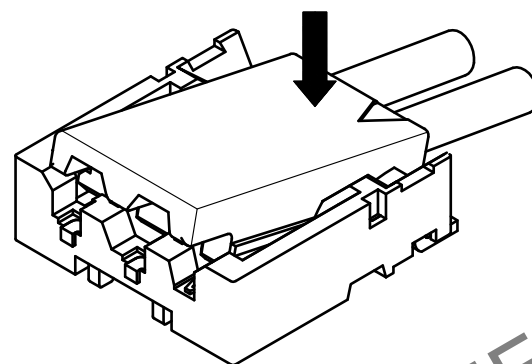
# DF57 Series Mating / Unmating Operation Instruction

## Mating

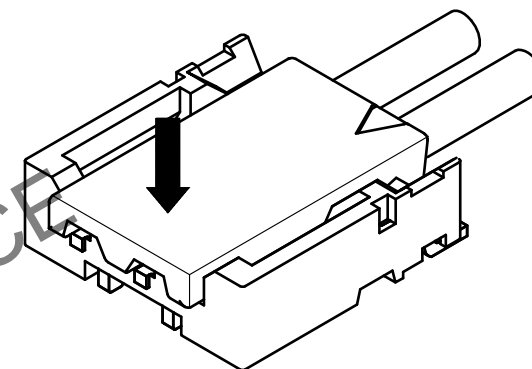
①By positioning the convexity of the socket sides to the header concavity, align the centers of the socket and the header in pitch direction.



②Slightly press the socket down at cable side to tilted angle.

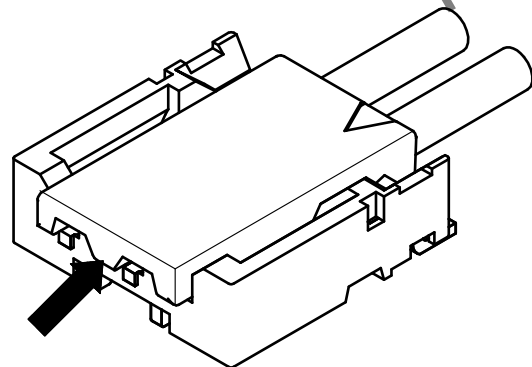


③Press down at the lever side with stabilizing the cable side to insert. Mating completes.

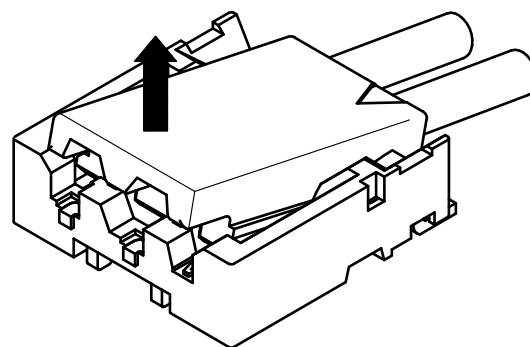


## Unmating

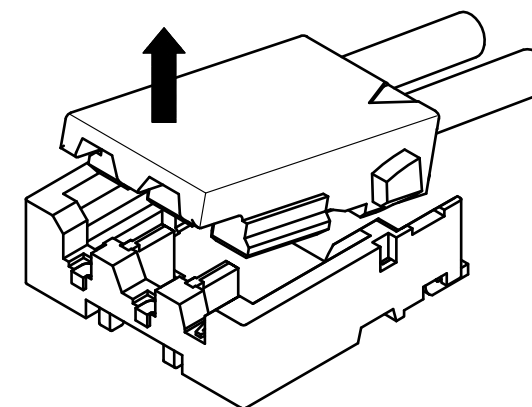
①Hook the lever with finger nail.



②Lift up to the upper direction and friction lock is released.



③Lift up to the upper direction and positive lock is released. Removal completes.



**HRS**

DRAWING NO.	EDC-343904-23-02
PART NO.	DF57H-2P-1.2V(23)
CODE NO.	CL0666-0104-7-23

3/3