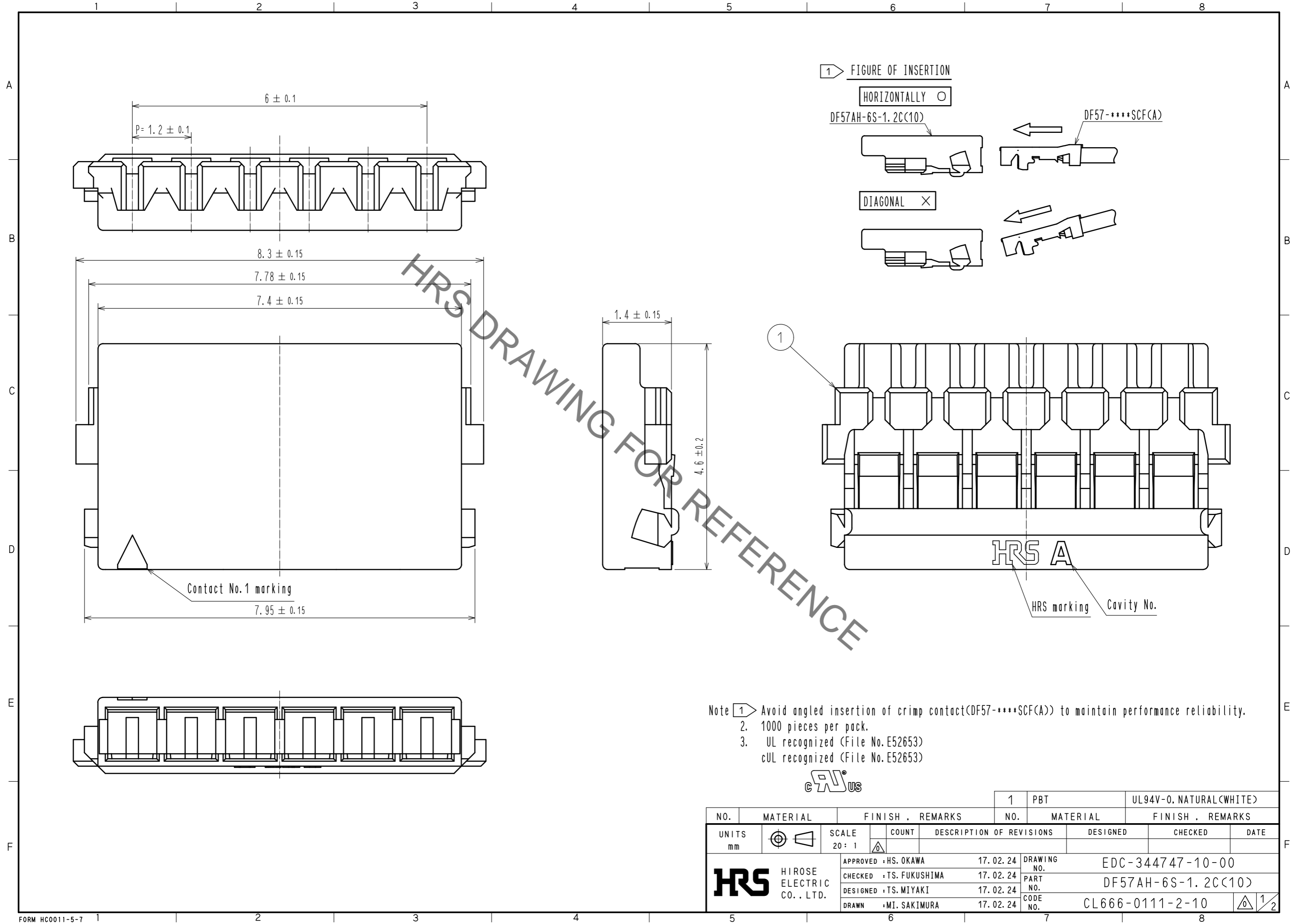


Sep.1.2020 Copyright 2020 HIROSE ELECTRIC CO., LTD. All Rights Reserved.
In case of consideration for using Automotive equipment / device which demand high reliability, kindly contact our sales window correspondents.

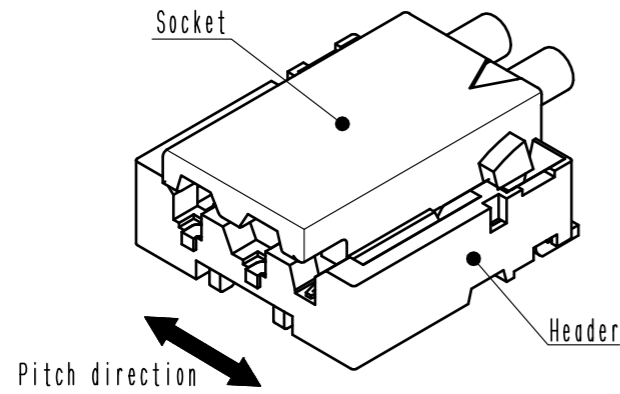


NO.	MATERIAL	FINISH . REMARKS	NO.	MATERIAL	FINISH . REMARKS
			1	PBT	UL94V-0. NATURAL(WHITE)
UNITS	mm	SCALE	20 : 1	COUNT	DESCRIPTION OF REVISIONS
		APPROVED	HS. OKAWA	17.02.24	DRAWING NO.
		CHECKED	TS. FUKUSHIMA	17.02.24	PART NO.
		DESIGNED	TS. MIYAKI	17.02.24	CODE NO.
		DRAWN	MI. SAKIMURA	17.02.24	CL666-0111-2-10
					EDC-344747-10-00
					DF57AH-6S-1.2C(10)
					1/2

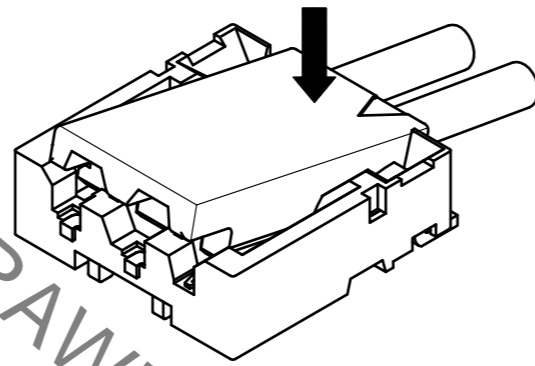
DF57 Series Mating / Unmating Operation Instruction (For DF57 series)

Mating

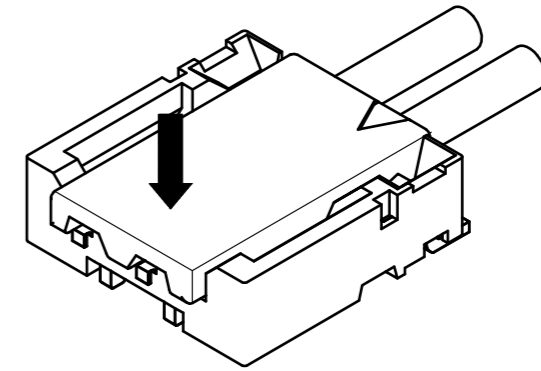
① By positioning the convexity of the socket sides to the header concavity, align the centers of the socket and the header in pitch direction.



② Slightly press the socket down at cable side to tilted angle.

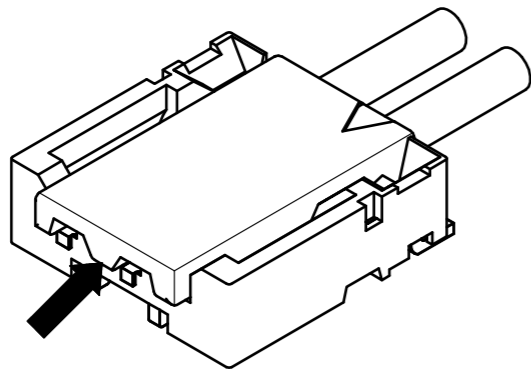


③ Press down at the lever side with stabilizing the cable side to insert. Mating completes.

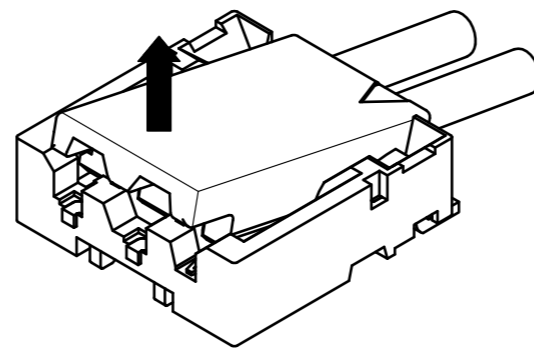


Unmating

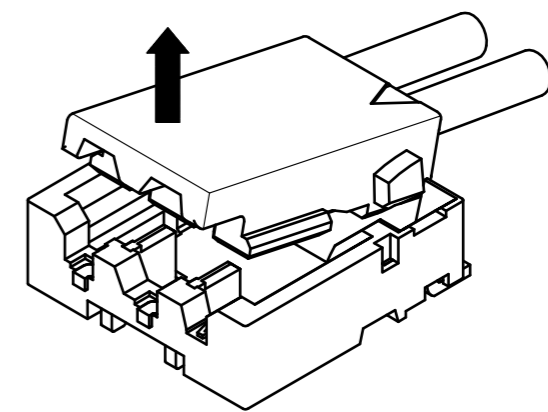
① Hook the lever with finger nail.



② Lift up to the upper direction and friction lock is released.



③ Lift up to the upper direction and positive lock is released. Removal completes.



HRS DRAWING FOR REFERENCE

HRS	DRAWING NO.	EDC-344747-10-00
	PART NO.	DF57AH-6S-1. 2C<10>
	CODE NO.	CL666-0111-2-10
		2/2

Sep.1.2020 Copyright 2020 HIROSE ELECTRIC CO., LTD. All Rights Reserved. In case of consideration for using Automotive equipment / device which demand high reliability, kindly contact our sales window correspondents.