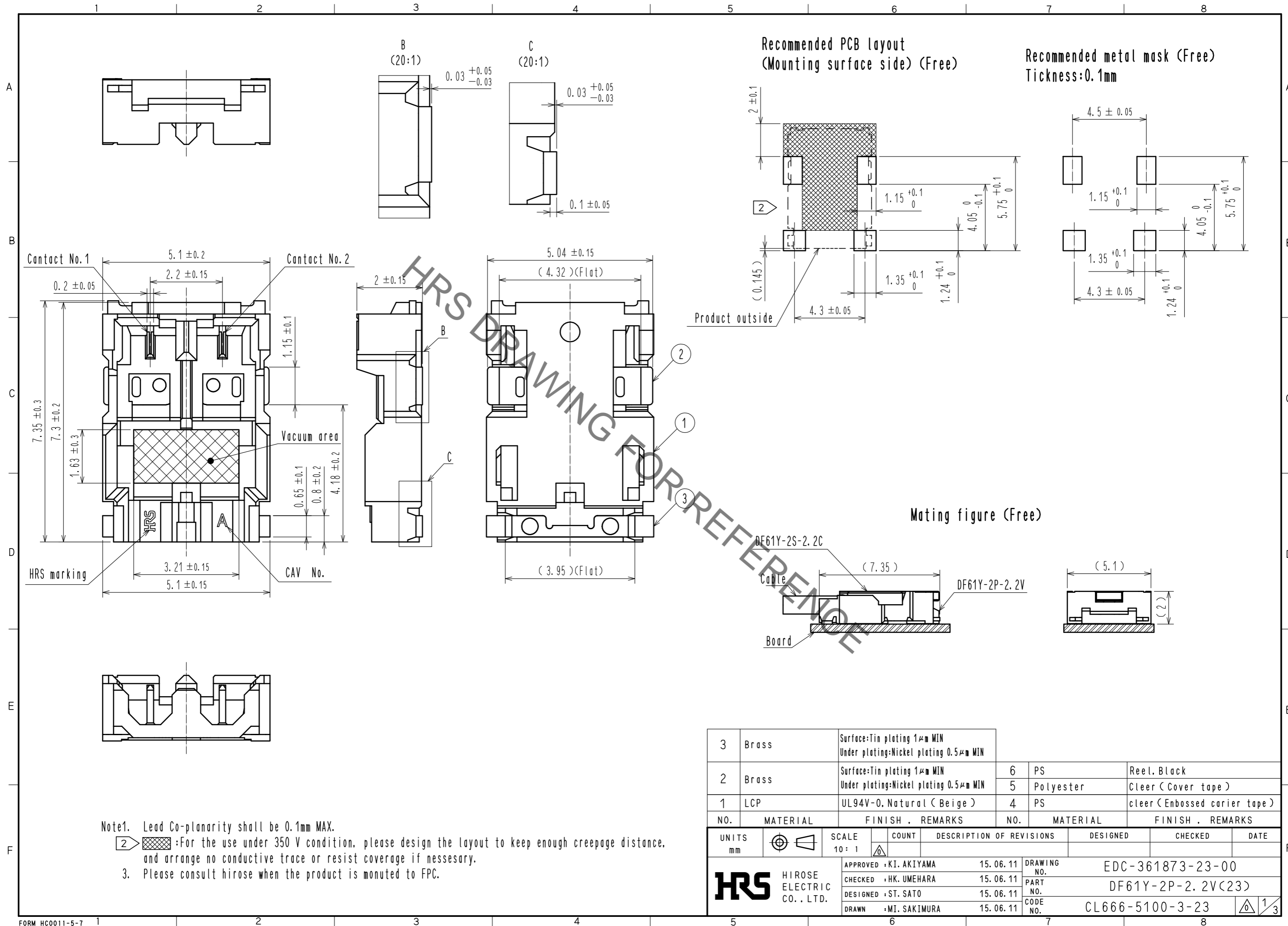


Dec.1.2020 Copyright 2020 HIROSE ELECTRIC CO., LTD. All Rights Reserved.  
 In case of consideration for using Automotive equipment / device which demand high reliability, kindly contact our sales window correspondents.



Note1. Lead Co-planarity shall be 0.1mm MAX.

② :For the use under 350 V condition, please design the layout to keep enough creepage distance, and arrange no conductive trace or resist coverage if necessary.

3. Please consult Hirose when the product is mounted to FPC.

NO.	MATERIAL	FINISH . REMARKS	NO.	MATERIAL	FINISH . REMARKS
3	Brass	Surface: Tin plating 1μm MIN Under plating: Nickel plating 0.5μm MIN	6	PS	Reel. Black
2	Brass	Surface: Tin plating 1μm MIN Under plating: Nickel plating 0.5μm MIN	5	Polyester	Clear (Cover tape)
1	LCP	UL94V-0. Natural (Beige)	4	PS	clear (Embossed carrier tape)

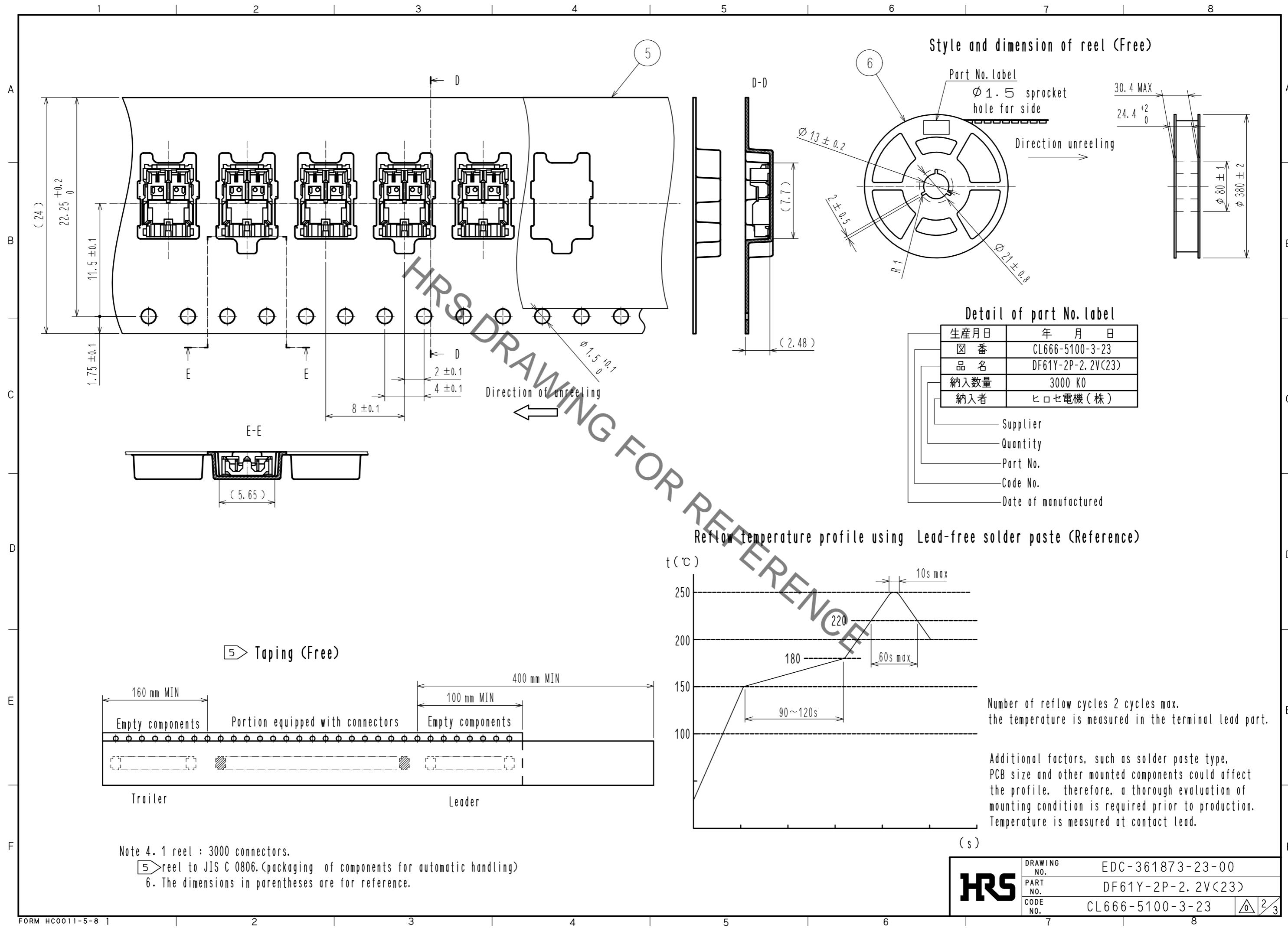
  

UNITS	SCALE	COUNT	DESCRIPTION OF REVISIONS	DESIGNED	CHECKED	DATE
mm	10:1	△				

<b>HRS</b>	HIROSE ELECTRIC CO., LTD.	APPROVED : KI. AKIYAMA	15.06.11	DRAWING NO.	EDC-361873-23-00	
		CHECKED : HK. UMEHARA	15.06.11	PART NO.	DF61Y-2P-2.2V(23)	
		DESIGNED : ST. SATO	15.06.11	CODE NO.	CL666-5100-3-23	
		DRAWN : MI. SAKIMURA	15.06.11			1/3

Dec.1.2020 Copyright 2020 HIROSE ELECTRIC CO., LTD. All Rights Reserved.  
 In case of consideration for using Automotive equipment / device which demand high reliability, kindly contact our sales window correspondents.



Style and dimension of reel (Free)

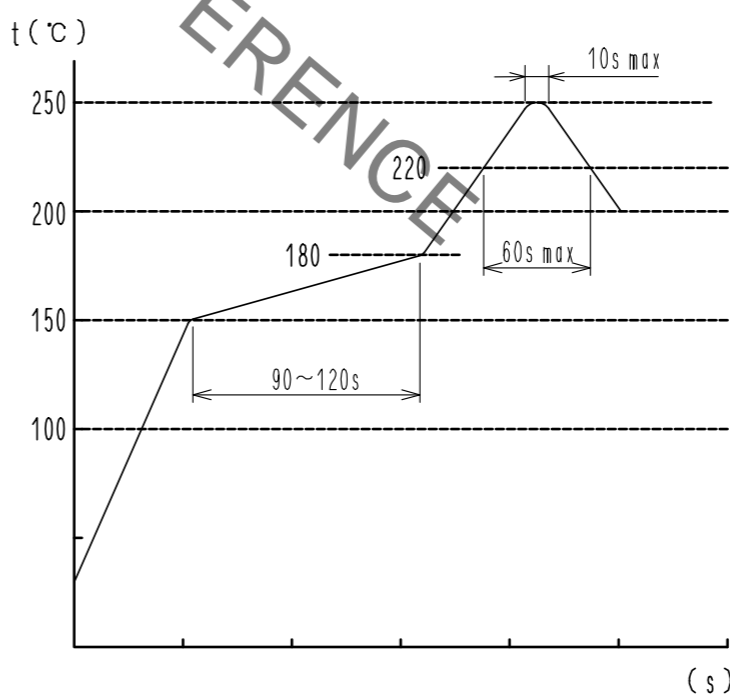
Part No. Label  
 Ø 1.5 sprocket hole for side

Detail of part No. label

生産月日	年 月 日
図 番	CL666-5100-3-23
品 名	DF61Y-2P-2.2V(23)
納入数量	3000 K0
納入者	ヒロセ電機(株)

- Supplier
- Quantity
- Part No.
- Code No.
- Date of manufactured

Reflow temperature profile using Lead-free solder paste (Reference)



Number of reflow cycles 2 cycles max.  
 the temperature is measured in the terminal lead part.

Additional factors, such as solder paste type, PCB size and other mounted components could affect the profile, therefore, a thorough evaluation of mounting condition is required prior to production. Temperature is measured at contact lead.

Note 4. 1 reel : 3000 connectors.  
 5) reel to JIS C 0806.(packaging of components for automatic handling)  
 6. The dimensions in parentheses are for reference.

<b>HRS</b>	DRAWING NO.	EDC-361873-23-00
	PART NO.	DF61Y-2P-2.2V(23)
	CODE NO.	CL666-5100-3-23
		2/3

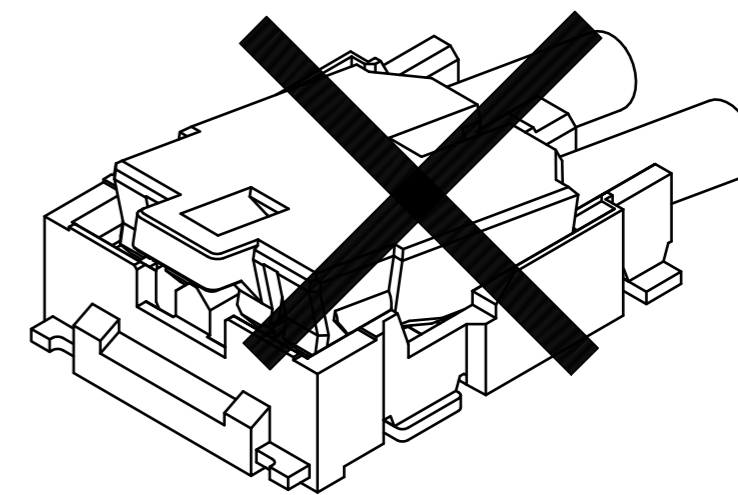
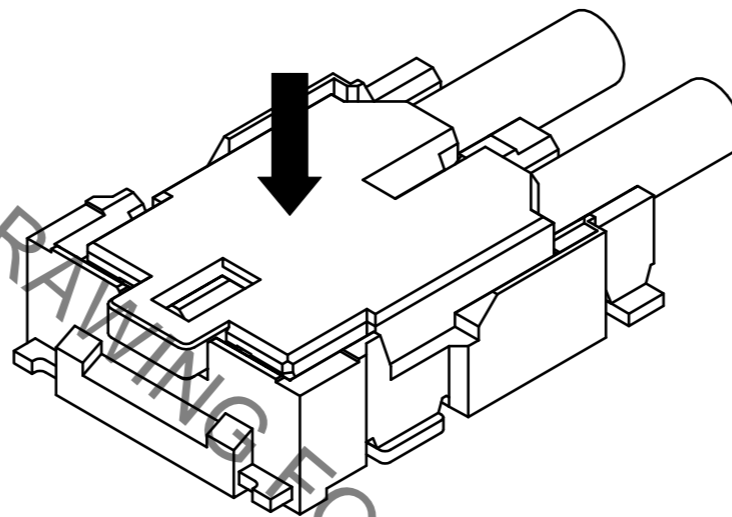
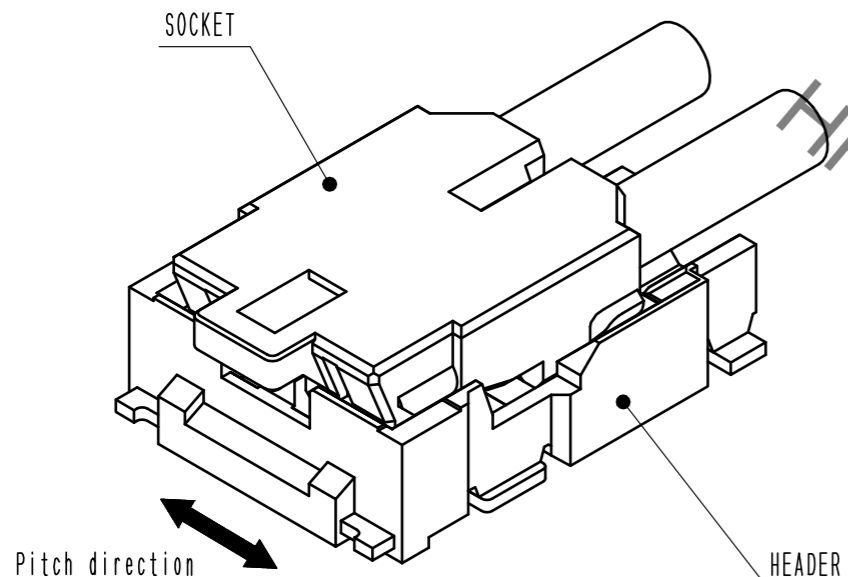
# DF61Y Series Mating / Unmating Operation Instruction

## Mating

① By positioning the convexity of the socket sides to the header concavity, align the centers of the socket and the header in pitch direction.

② Slightly press the socket down at the center of the socket.

③ Press down at the lever side with stabilizing the cable side to insert. Mating completes.

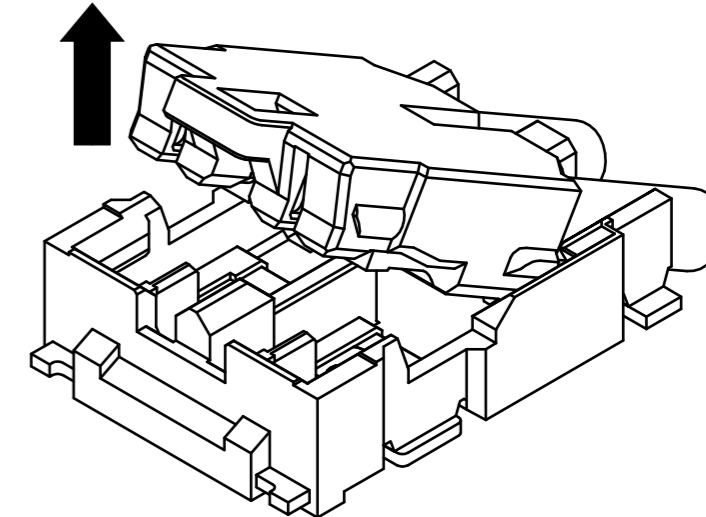
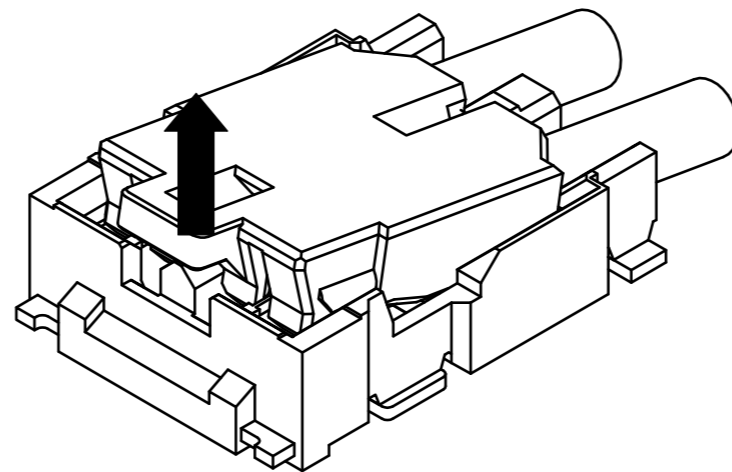
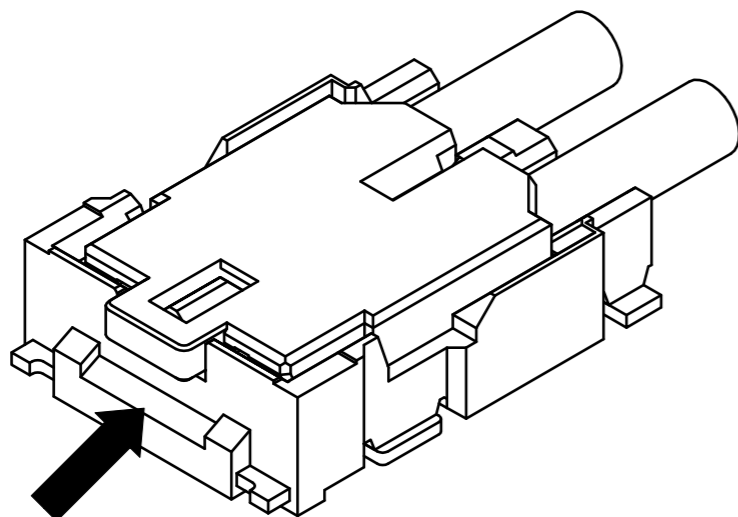


## Unmating

① Hook the lever with finger nail.

② Lift up to the upper direction and friction lock is released.

③ Lift it up to the upper direction more, and removal completes.



<b>HRS</b>	DRAWING NO.	EDC-361873-23-00
	PART NO.	DF61Y-2P-2.2V(23)
	CODE NO.	CL666-5100-3-23
		3/3

Dec.1.2020 Copyright 2020 HIROSE ELECTRIC CO., LTD. All Rights Reserved. In case of consideration for using Automotive equipment / device which demand high reliability, kindly contact our sales window correspondents.