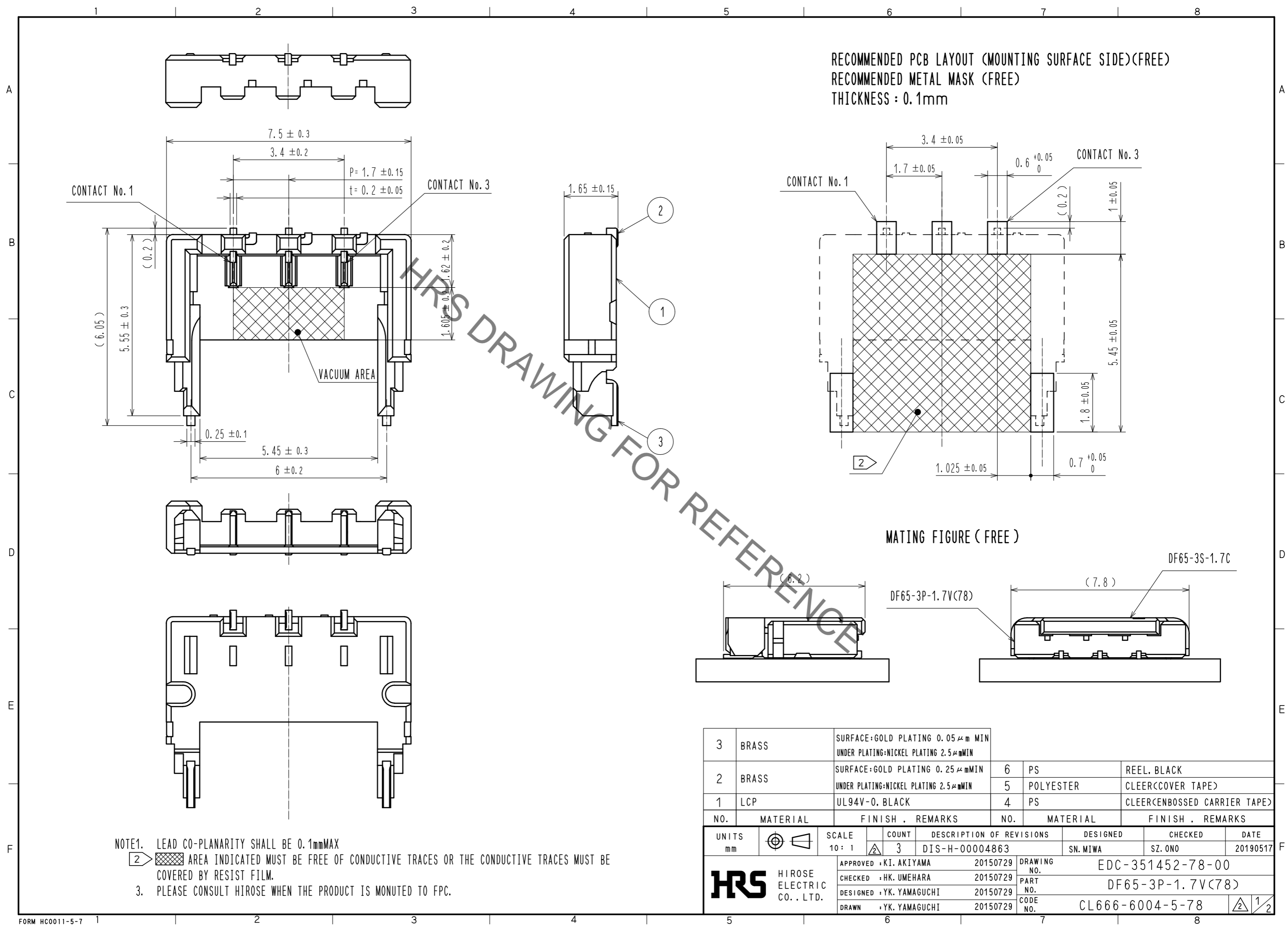


May.1.2020 Copyright 2020 HIROSE ELECTRIC CO., LTD. All Rights Reserved.  
In case of consideration for using Automotive equipment / device which demand high reliability, kindly contact our sales window correspondents.



NO.	MATERIAL	FINISH	REMARKS	NO.	MATERIAL	FINISH	REMARKS
3	BRASS	SURFACE:GOLD PLATING 0.05μm MIN UNDER PLATING-NICKEL PLATING 2.5μmMIN		6	PS		REEL, BLACK
2	BRASS	SURFACE:GOLD PLATING 0.25μmMIN UNDER PLATING-NICKEL PLATING 2.5μmMIN		5	POLYESTER		CLEER(COVER TAPE)
1	LCP	UL94V-0, BLACK		4	PS		CLEER(CENBOSSED CARRIER TAPE)

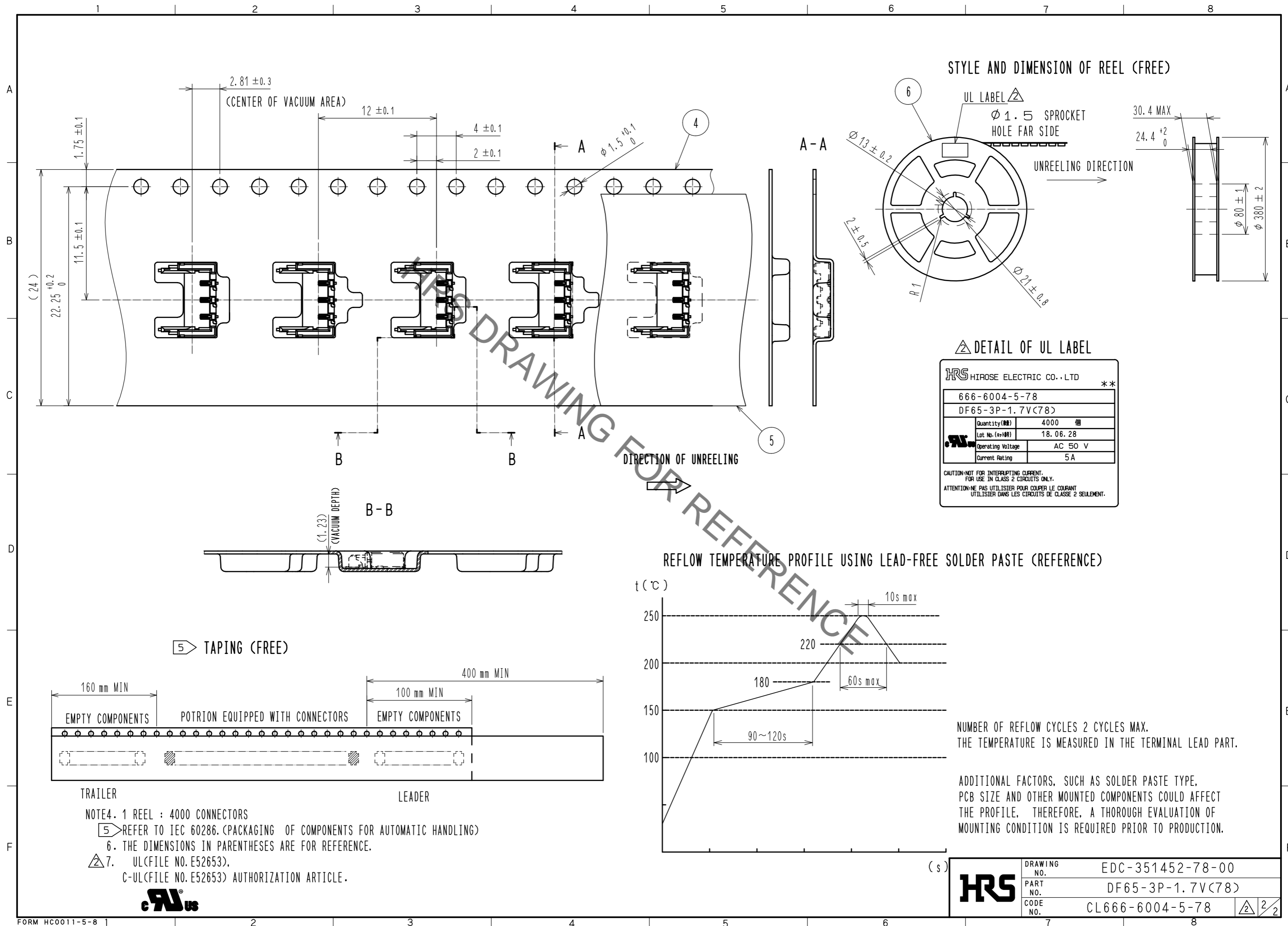
  

UNITS	SCALE	COUNT	DESCRIPTION OF REVISIONS	DESIGNED	CHECKED	DATE
mm	10:1	3	DIS-H-00004863	SN.MIWA	SZ.ONO	20190517

APPROVED	CHECKED	DESIGNED	DRAWN	DRAWING NO.	PART NO.	CODE NO.
•KI. AKIYAMA	•HK. UMEHARA	•YK. YAMAGUCHI	•YK. YAMAGUCHI	EDC-351452-78-00	DF65-3P-1.7V(78)	CL666-6004-5-78
20150729	20150729	20150729	20150729			

May.1.2020 Copyright 2020 HIROSE ELECTRIC CO., LTD. All Rights Reserved.  
 In case of consideration for using Automotive equipment / device which demand high reliability, kindly contact our sales window correspondents.



<b>HRS</b>	DRAWING NO.	EDC-351452-78-00
	PART NO.	DF65-3P-1.7V<78>
	CODE NO.	CL666-6004-5-78
		2/2