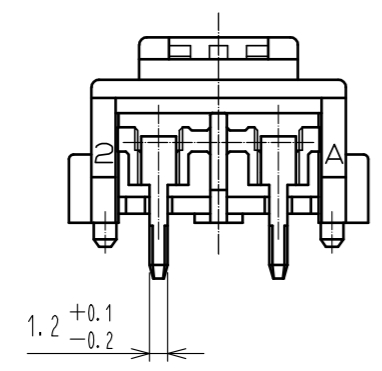
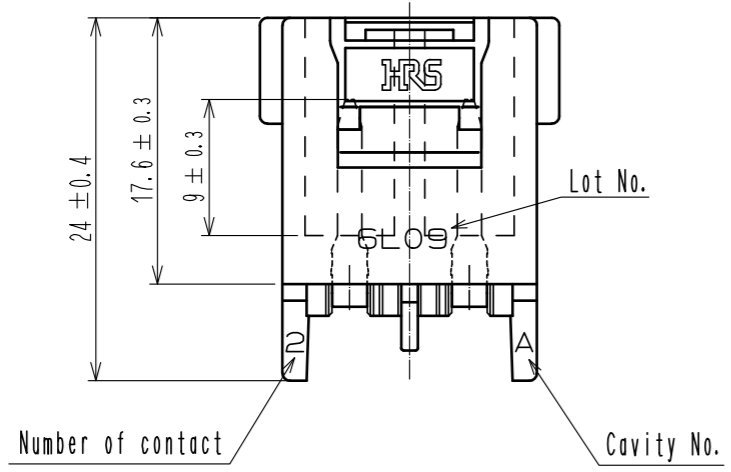
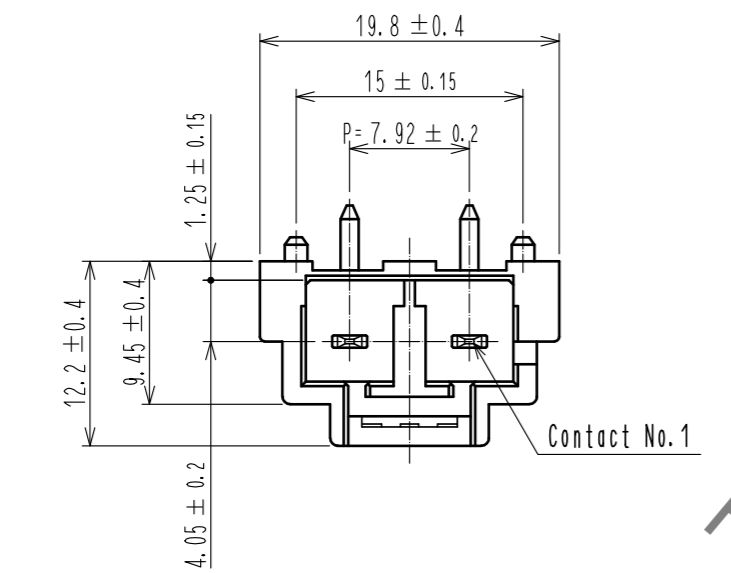


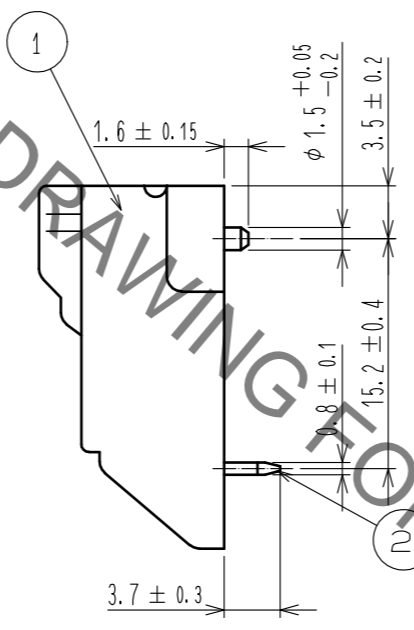
Sep.1.2019 Copyright 2019 HIROSE ELECTRIC CO., LTD. All Rights Reserved.
In case of consideration for using Automotive equipment / device which demand high reliability, kindly contact our sales window correspondents.



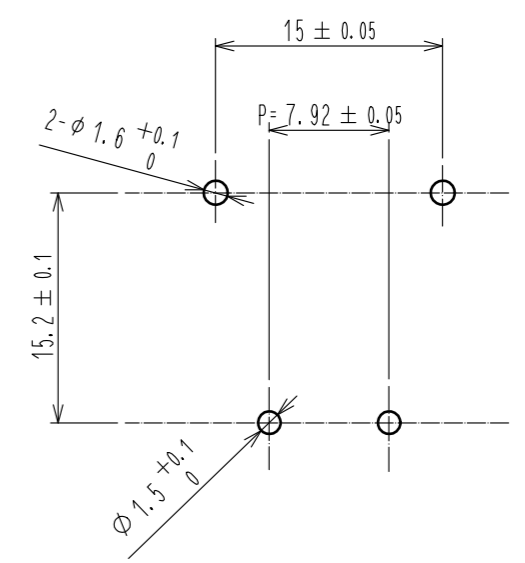
NOTE 1. Per pack : 100 pieces.
2. UL(File No. E52653)
C-UL(File No. E52653)
TÜV(File No. R9950703)authorization article.



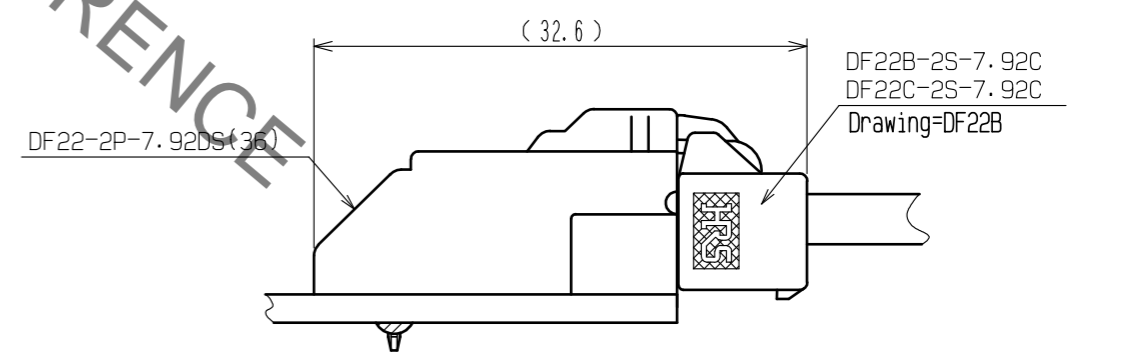
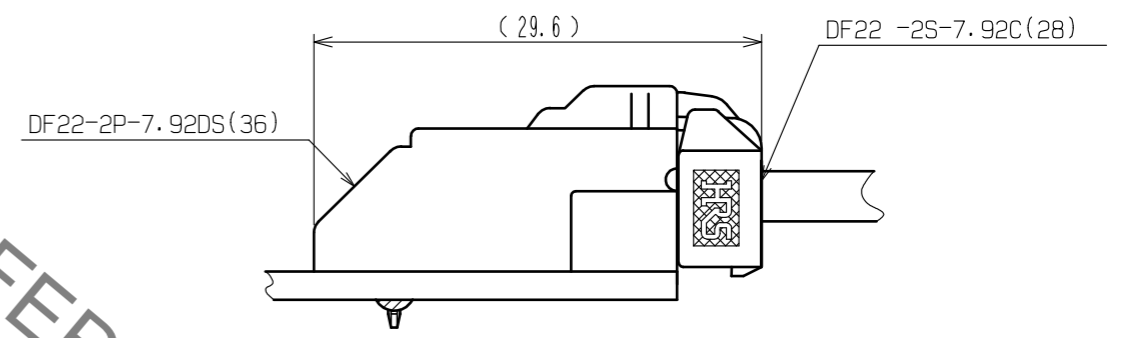
HRS DRAWING TOP REFERENCE



Recommended PCB layout(Board thickness:1.6±0.1)



Application diagram



1	Polyamide	Natural (beige), UL94V-0	2	Copper alloy	Contact area:Gold plating 0.2μm min Lead area:Tin-copper plating 1μm min Under plating:Nickel plating 1μm min Other:Nickel plating 1μm min		
NO.	MATERIAL	FINISH . REMARKS	NO.	MATERIAL	FINISH . REMARKS		
UNITS	mm	SCALE	COUNT	DESCRIPTION OF REVISIONS	DESIGNED	CHECKED	DATE
		2 : 1	1	DIS-H-00003575	TS. KUMAZAWA	TS. FUKUSHIMA	18. 03. 29
APPROVED : KI. AKIYAMA		15. 11. 05		DRAWING NO. EDC-163023-36-00			
CHECKED : TS. FUKUSHIMA		15. 11. 05		PART NO. DF22-2P-7.92DS(36)			
DESIGNED : HT. SATO		15. 11. 04		CODE NO. CL680-1008-5-36			
DRAWN : MI. SAKIMURA		15. 11. 02		1/2			

Sep.1.2019 Copyright 2019 HIROSE ELECTRIC CO., LTD. All Rights Reserved.
In case of consideration for using Automotive equipment / device which demand high reliability, kindly contact our sales window correspondents.

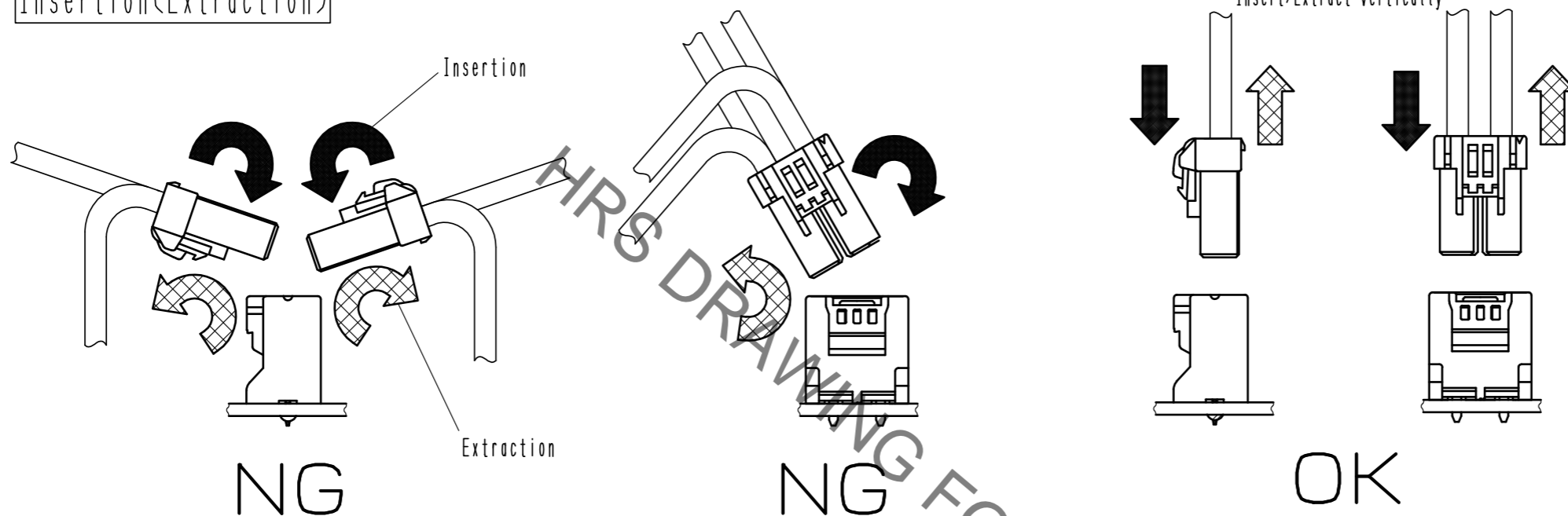


Precautions

Notification for Insertion/Extraction

- 1) Please insert(extract) the crimping socket straight to the mating connector.
Insertion(extraction) at tilted angles applies load concentration to the connector end and may cause deformation (at connection area, socket and header case, etc). There is firing risk using this kind of deformed connector.

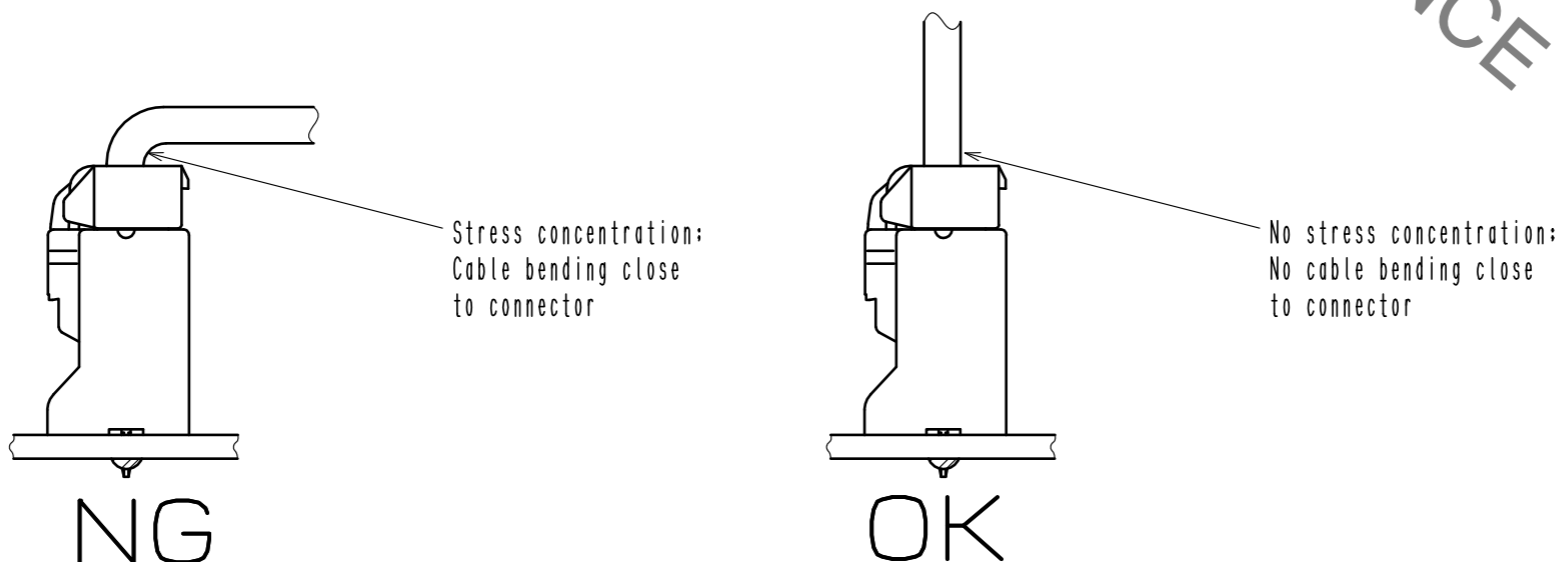
Insertion(Extraction)



- 2) When it is hard to extract, please lightly insert the connector beforehand and then pull it with releasing the lock.
Forced extraction has a risk of connector breakage.

Notification of wiring

- 1) When using a thick cable, short cable length and bending close to the connector end, these load concentration may cause deformation.
Please note that there is firing risk using deformed connector.
When installing, please refrain from stress concentration such as cable bending close to the connector end or cable twisting.



- 2) When applying load to connector end, please use the retainer for reducing the stress affection on the connector.
Retainer shall be installed after inserted crimping contact completely. It might be impossible to insert it when terminal installation is incompletd.



DRAWING NO.	EDC-163023-36-00
PART NO.	DF22-2P-7. 92DS(36)
CODE NO.	CL680-1008-5-36

