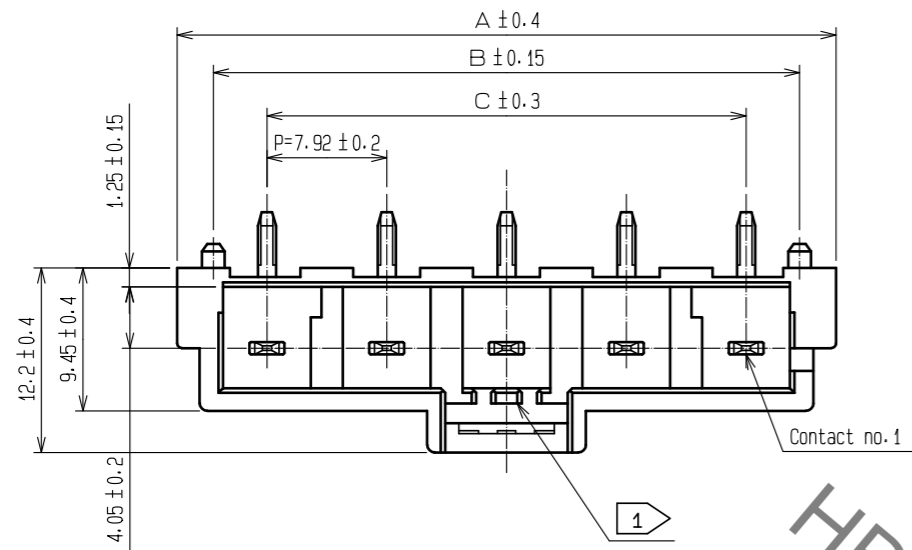
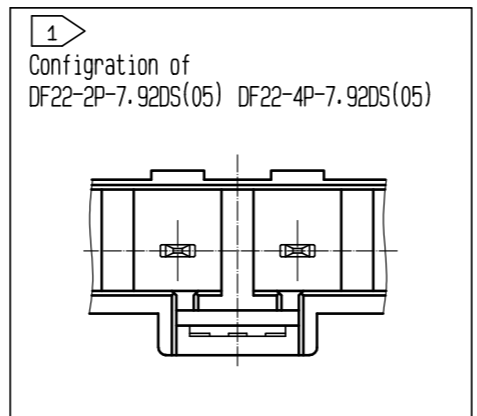
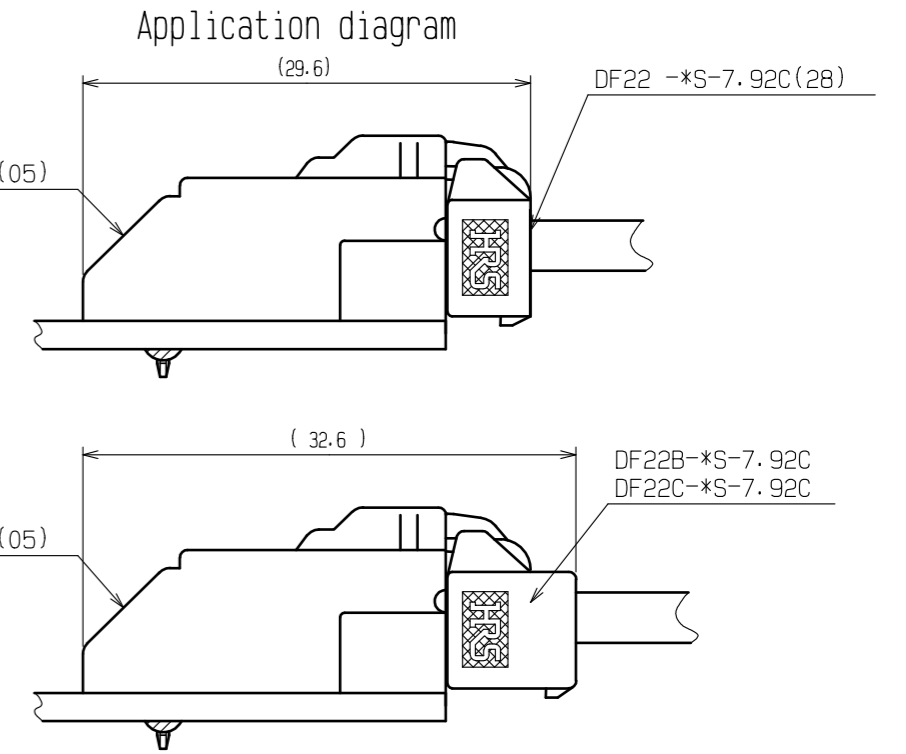
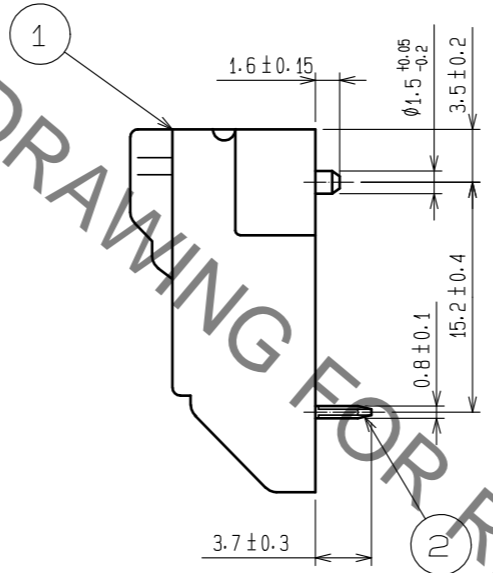
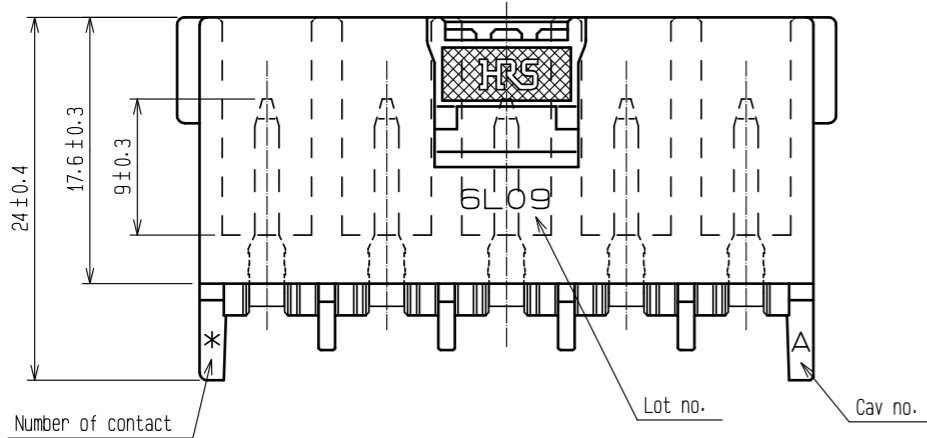
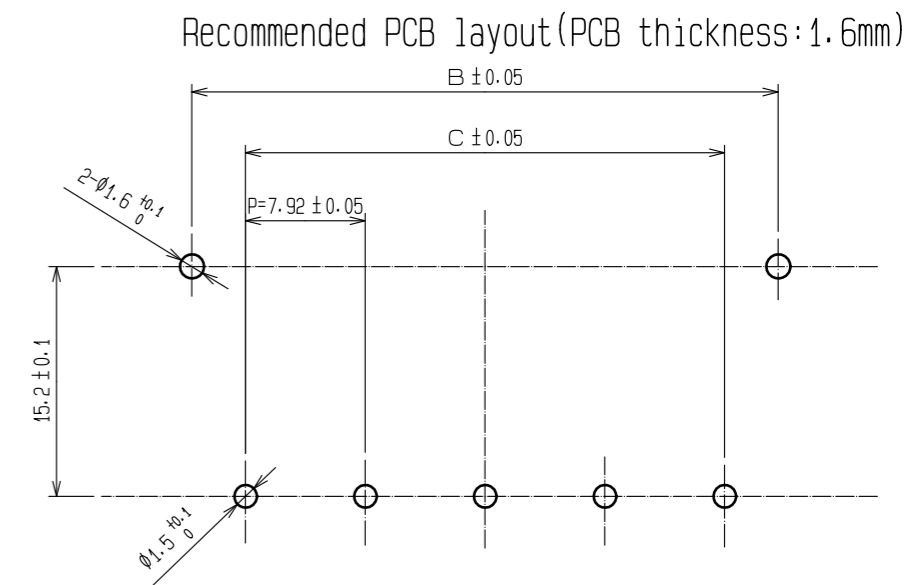


Oct.1.2019 Copyright 2019 HIROSE ELECTRIC CO., LTD. All Rights Reserved.
In case of consideration for using Automotive equipment / device which demand high reliability, kindly contact our sales window correspondents.



Part no.	Code no.	Number of contact	A	B	C
DF22-2P-7.92DS(05)	CL680-1008-5-05	2	19.80	15.00	7.92
DF22-3P-7.92DS(05)	CL680-1009-8-05	3	27.72	22.92	15.84
DF22-4P-7.92DS(05)	CL680-1009-7-05	4	35.64	30.84	23.76
DF22-5P-7.92DS(05)	CL680-1011-0-05	5	43.56	38.76	31.68



Notes 1) TWO AND FOUR CONTACTS ARE DIFFERENT SHAPE AS SHOWN.
2. UL (File no. E52653)
C-UL (File no. E52653)
TUV (Certificate no. R9950703)



3:PER PACK:100PIECES

NO.	MATERIAL	FINISH	REMARKS	NO.	MATERIAL	FINISH	REMARKS
1	Polyamide	Natural (beige)	UL94V-0	2	Copper alloy	Surface: Tin-copper plated 1μm min Under plating: Nickel plating 0.5μm min	

UNITS	SCALE	COUNT	DESCRIPTION OF REVISIONS	DESIGNED	CHECKED	DATE
mm	2:1	1	DIS-H-00003735	TO. KUROMATSU	TS. FUKUSHIMA	18.04.11

APPROVED	DATE	DRAWING NO.
KJ. KATAYOSE	05.01.05	EDC-163718-05-01
CHECKED	DATE	PART NO.
TY. OMA	05.01.05	DF22-*P-7.92DS(05)
DESIGNED	DATE	CODE NO.
HK. UMEHARA	05.01.05	CL680-
DRAWN	DATE	
HK. UMEHARA	05.01.05	

Oct.1.2019 Copyright 2019 HIROSE ELECTRIC CO., LTD. All Rights Reserved.
In case of consideration for using Automotive equipment / device which demand high reliability, kindly contact our sales window correspondents.

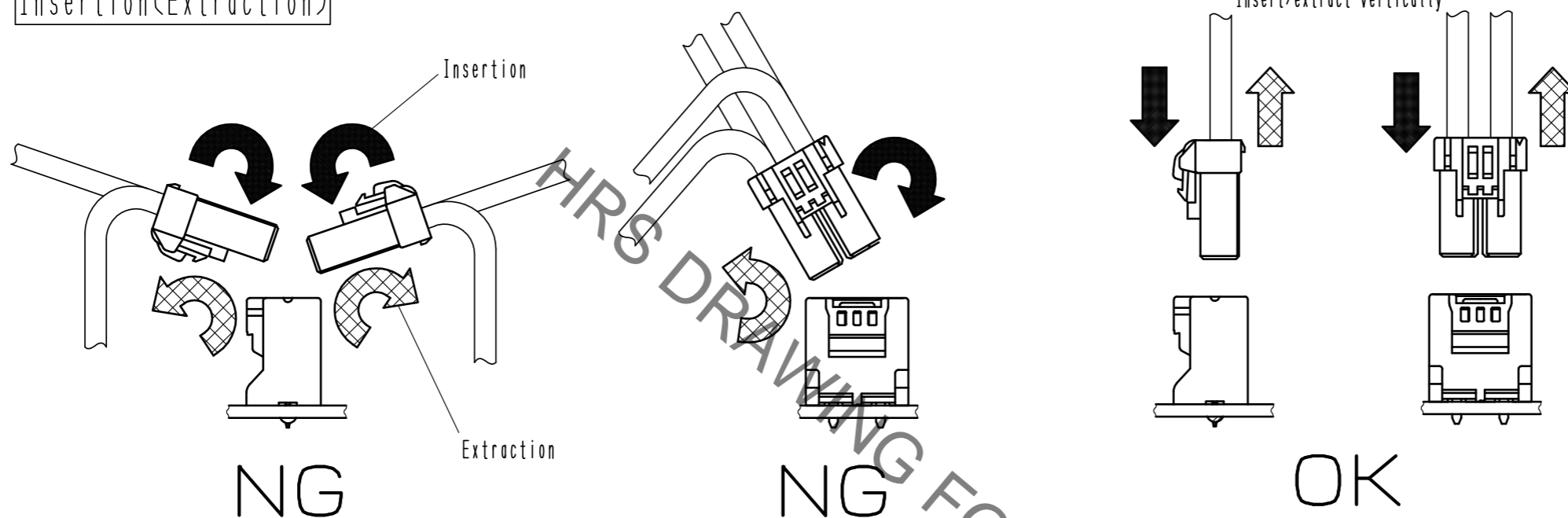


Precautions

Notification for Insertion/Extraction

1) Please insert(extract) the crimping socket straight to the mating connector.
Insertion(extraction) at tilted angles applies load concentration to the connector end and may cause deformation (at connection area, socket and header case, etc). There is firing risk using this kind of deformed connector.

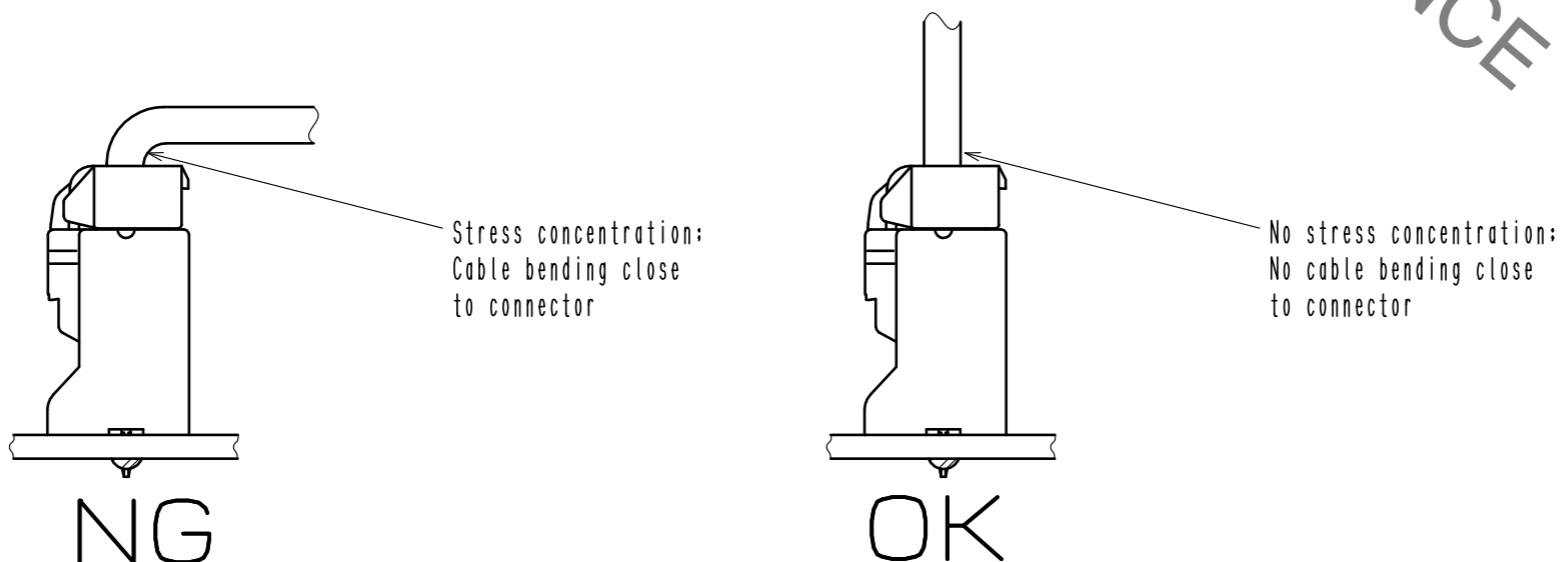
Insertion(Extraction)



2) When it is hard to extract, please lightly insert the connector beforehand and then pull it with releasing the lock.
Forced extraction has a risk of connector breakage.

Notification of wiring

1) When using a thick cable, short cable length and bending close to the connector end, these load concentration may cause deformation.
Please note that there is firing risk using deformed connector.
When installing, please refrain from stress concentration such as cable bending close to the connector end or cable twisting.



2) When applying load to connector end, please use the retainer for reducing the stress affection on the connector.
Retainer shall be installed after inserted crimping contact completely. It might be impossible to insert it when terminal installation is incompleated.



HRS	DRAWING NO.	EDC-163718-05-01		2/2
	PART NO.	DF22-*P-7. 92DS<05>		
	CODE NO.	CL680-		