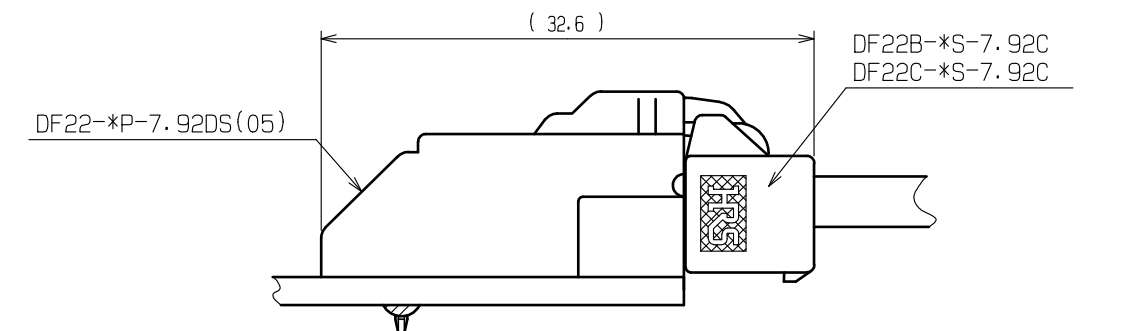
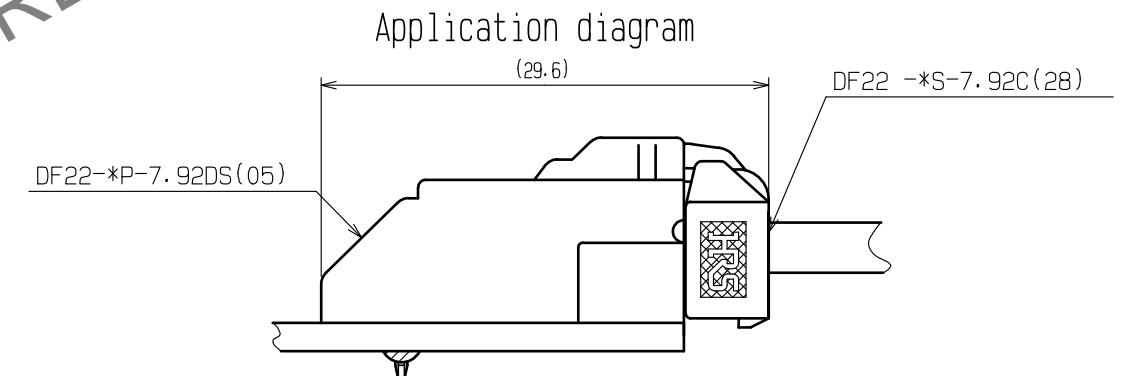
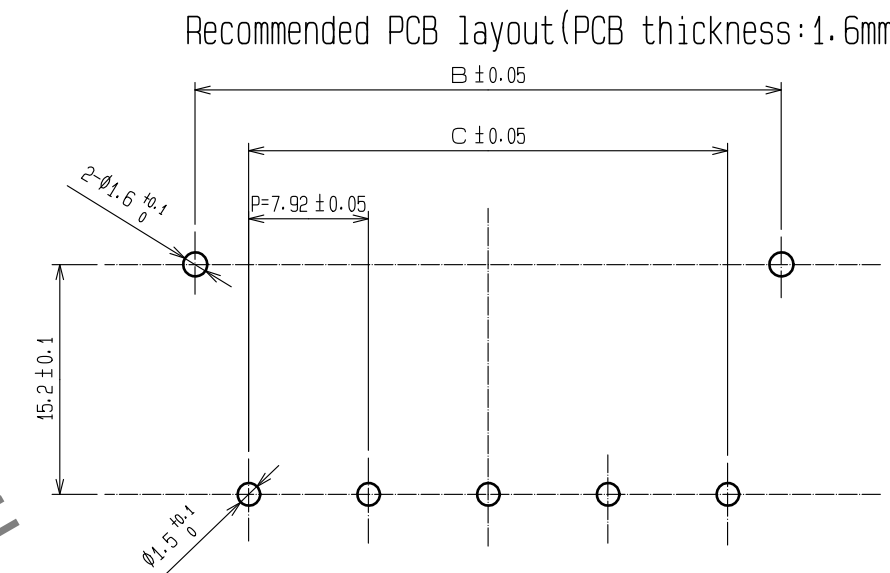
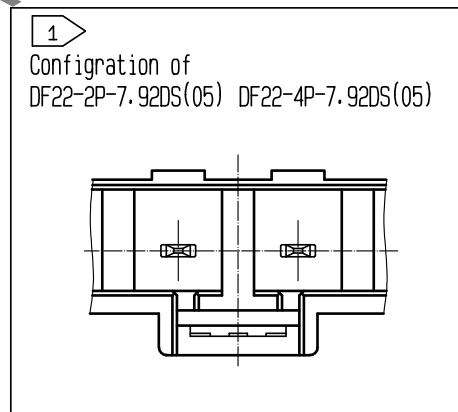
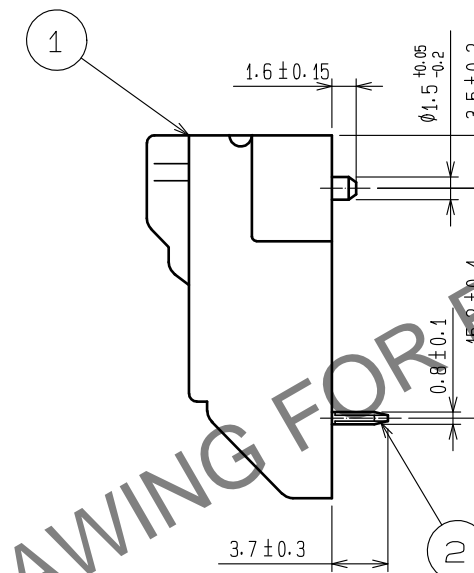
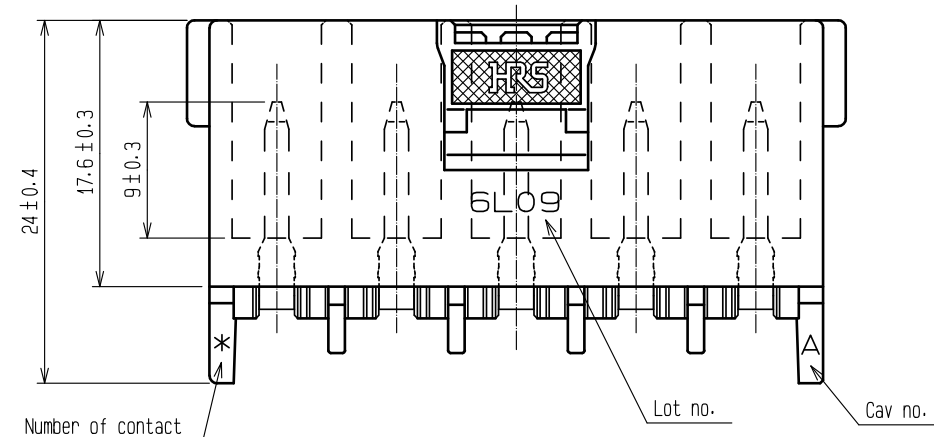





Part no.	Code no.	Number of contact	A	B	C
DF22-2P-7.92DS(05)	CL680-1008-5-05	2	19.80	15.00	7.92
DF22-3P-7.92DS(05)	CL680-1009-8-05	3	27.72	22.92	15.84
DF22-4P-7.92DS(05)	CL680-1009-7-05	4	35.64	30.84	23.76
DF22-5P-7.92DS(05)	CL680-1011-0-05	5	43.56	38.76	31.68

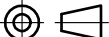






Notes  TWO AND FOUR CONTACTS ARE DIFFERENT SHAPE AS SHOWN.

2. UL (File no. E52653)  
C-UL (File no. E52653)  
TUV (Certificate no. R9950703)



3:PER PACK:100PIECES

				2		Copper alloy		Surface : Tin-copper plated 1μm min Under plating:Nickel plating 0.5μm min	
1	Polyamide		Natural (beige)・UL94V-0						
NO.	MATERIAL		FINISH . REMARKS			NO.	MATERIAL		FINISH . REMARKS
UNITS mm		SCALE 2 : 1		COUNT 1	DESCRIPTION OF REVISIONS DIS-H-00003735		DESIGNED TO. KUROMATSU	CHECKED TS. FUKUSHIMA	DATE 18. 04. 11
 HIROSE ELECTRIC CO., LTD.		APPROVED : KJ. KATAYOSE		05. 01. 05	DRAWING NO. EDC-163718-05-01				
		CHECKED : TY. OMA		05. 01. 05	PART NO. DF22-*P-7. 92DS<05>				
		DESIGNED : HK. UMEHARA		05. 01. 05	CODE NO. CL680-				
		DRAWN : HK. UMEHARA		05. 01. 05	 				

Mar.1.2024 Copyright 2024 HIROSE ELECTRIC CO., LTD. All Rights Reserved.  
In case of consideration for using Automotive equipment / device which demand high reliability, kindly contact our sales window correspondents.

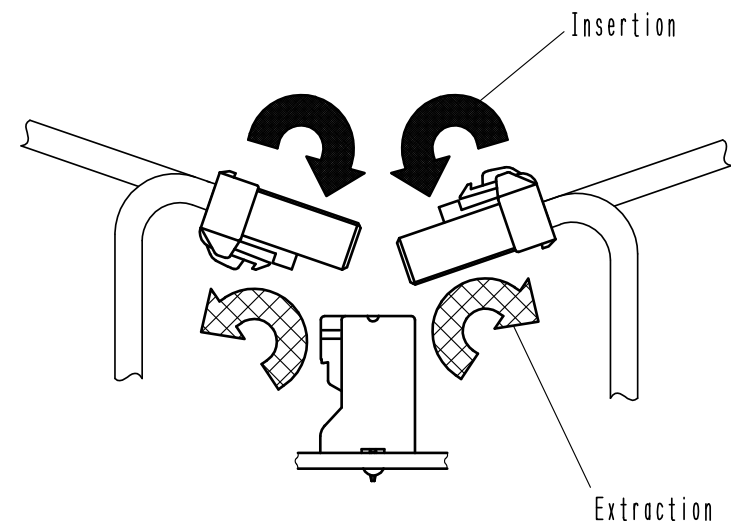


## Precautions

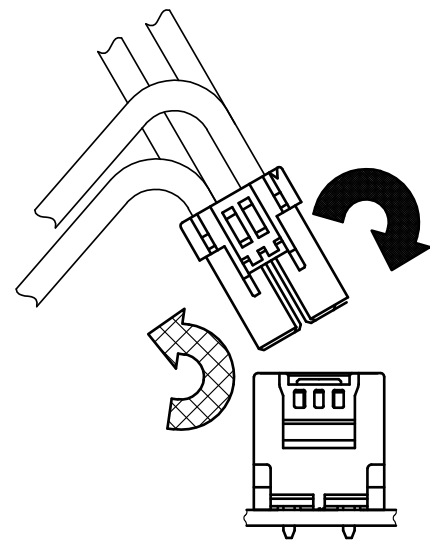
### Notification for Insertion Extraction

- 1) Please insert(extract) the crimping socket straight to the mating connector.  
Insertion(extraction) at tilted angles applies load concentration to the connetor end and may cause deformation (at connection area, socket and header case, etc). There is firing risk using this kind of deformed connector.

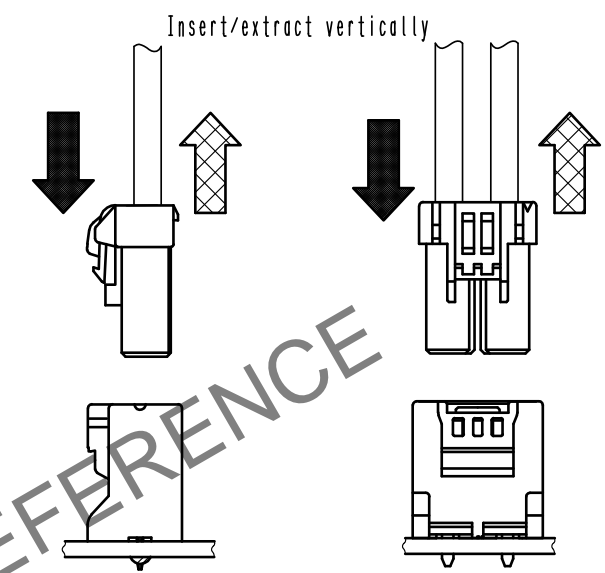
Insertion(Extraction)



NG



NG

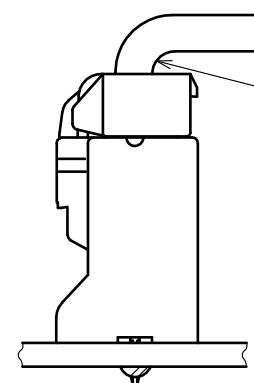


OK

- 2) When it is hard to extract, please lightly insert the connector beforehand and then pull it with releasing the lock.  
Forced extraction has a risk of connector breakage.

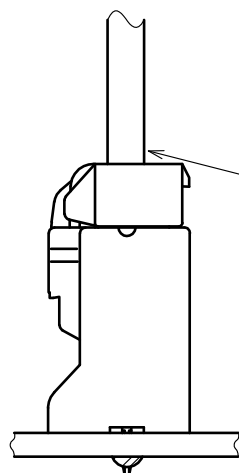
### Notification of wiring

- 1) When using a thick cable, short cable length and bending close to the connector end, these load concentration may cause deformation.  
Please note that there is firing risk using deformed connector.  
When installing, please refrain from stress concentration such as cable bending close to the connector end or cable twisting.



NG

Stress concentration;  
Cable bending close  
to connector



OK

No stress concentration;  
No cable bending close  
to connector



- 2) When applying load to connector end, please use the retainer for reducing the stress affection on the connector.  
Retainer shall be installed after inserted crimping contact completely. It might be impossible to insert it when terminal installation is incompleated.



DRAWING NO.	EDC-163718-05-01
PART NO.	DF22-*P-7. 92DS<05>
CODE NO.	CL680-