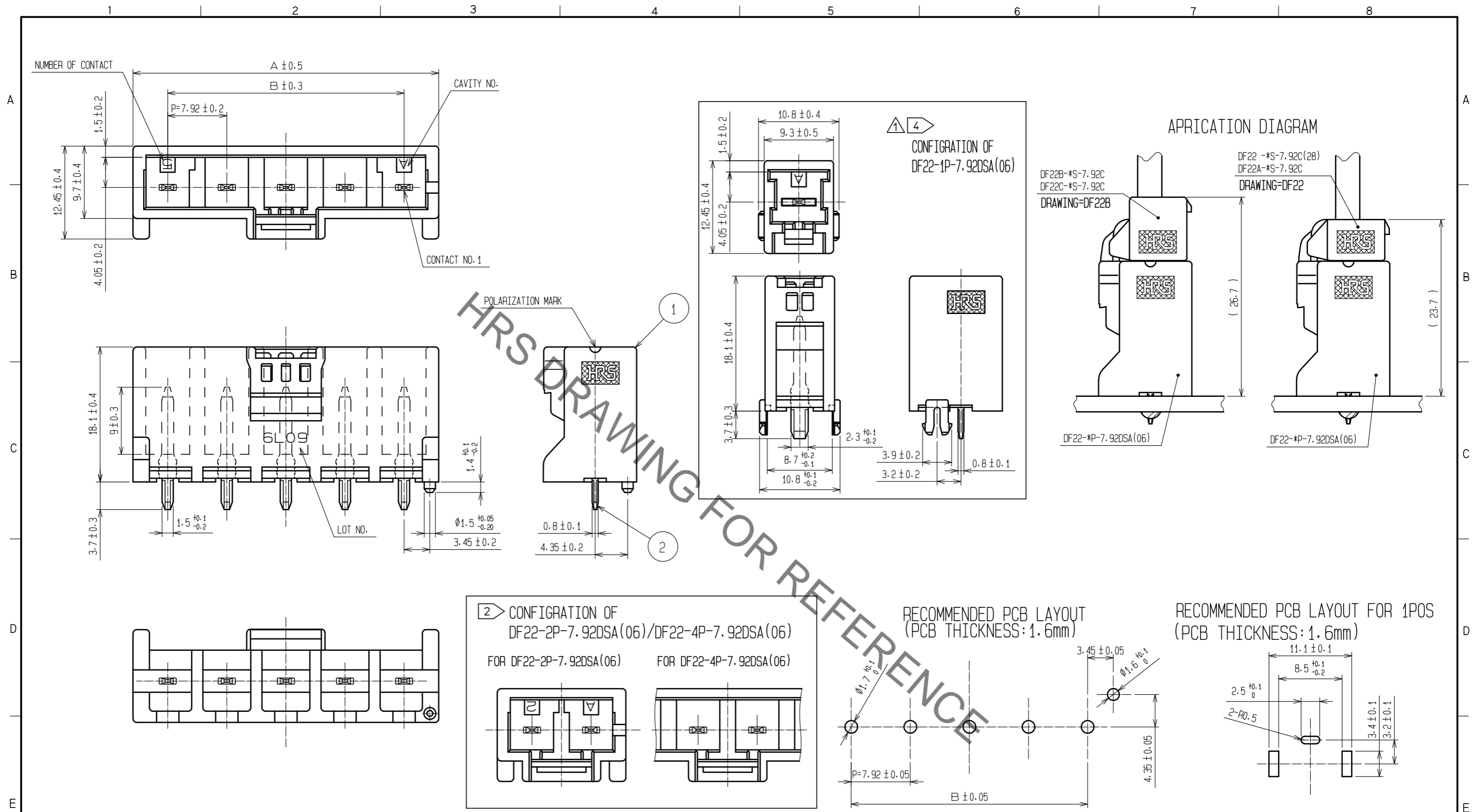


Oct.1.2019 Copyright 2019 HIROSE ELECTRIC CO., LTD. All Rights Reserved.  
In case of consideration for using Automotive equipment / device which demand high reliability, kindly contact our sales window correspondents.



PART NO.	CL NO.	NUMBER OF CONTACT	A	B
DF22-1P-7.92DSA(06)	CL680-1013-5-06	1	-	-
DF22-2P-7.92DSA(06)	CL680-1014-8-06	2	17.22	7.92
DF22-3P-7.92DSA(06)	CL680-1015-0-06	3	25.14	15.84
DF22-4P-7.92DSA(06)	CL680-1016-3-06	4	33.06	23.76
DF22-5P-7.92DSA(06)	CL680-1017-6-06	5	40.98	31.68

NOTE 1:UL(FILE NO.E52653)  
C-UL(FILE NO.E52653)  
TUV(CERTIFICATE NO.R9950703)AUTHORIZATION ARTICLE.

**2** TWO AND FOUR CONTACTS ARE DIFFERENT SHAPE AS SHOWN.  
3:PER PACK:100PIECES

**4** CONFIGURATION OF ONE CONTACTS.

NO.	MATERIAL	FINISH	REMARKS	NO.	MATERIAL	FINISH	REMARKS
2	COPPER ALLOY						Contact area:Gold plating 0.2µm min Lead area:Tin-copper plating 1µm min Under plating:Nickel plating 1µm min Other:Nickel plating 1µm min
1	POLYAMIDE						NATURAL (BEIGE)・UL94V-0

UNITS	SCALE	COUNT	DESCRIPTION OF REVISIONS	DESIGNED	CHECKED	DATE
mm	2 : 1	4	DIS-H-00005162	TS. KUMAZAWA	SZ. ONO	20190801

APPROVED	DATE	DRAWING NO.
HS. OKAWA	20180412	EDC-163719-06-00
TS. FUKUSHIMA	20180412	PART NO.
TO. KUROMATSU	20180412	DF22-*P-7.92DSA(06)
TO. KUROMATSU	20180412	CODE NO.
		CL680-

Oct.1.2019 Copyright 2019 HIROSE ELECTRIC CO., LTD. All Rights Reserved.  
 In case of consideration for using Automotive equipment / device which demand high reliability, kindly contact our sales window correspondents.

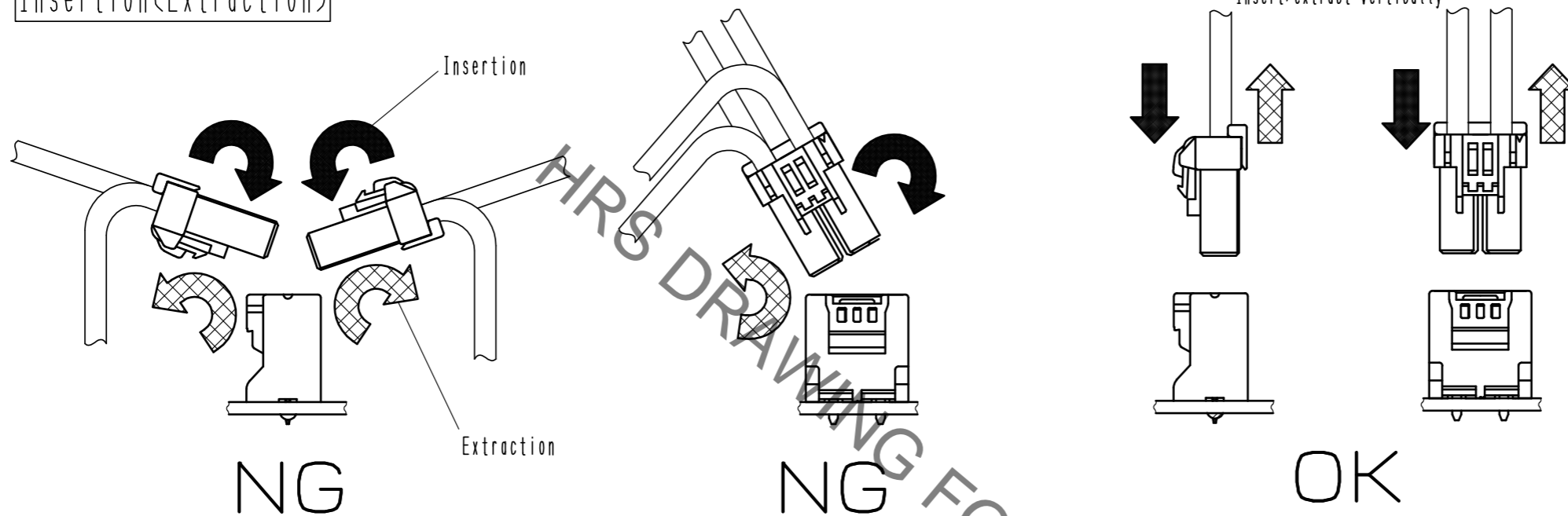
▣Precautions

◆Notification for Insertion/Extraction

- 1) Please insert/extract the crimping socket straight to the mating connector.  
 Insertion/Extraction at tilted angles applies load concentration to the connector end and may cause deformation (at connection area, socket and header case, etc). There is firing risk using this kind of deformed connector.



Insertion/Extraction



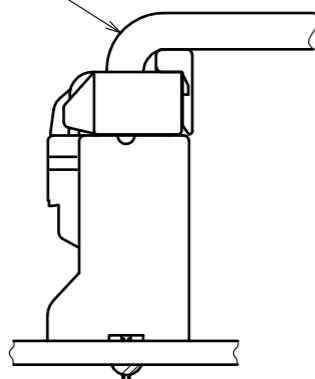
- 2) When it is hard to extract, please lightly insert the connector beforehand and then pull it with releasing the lock.  
 Forced extraction has a risk of connector breakage.

◆Notification of wiring

- 1) When using a thick cable, short cable length and bending close to the connector end, these load concentration may cause deformation.  
 Please note that there is firing risk using deformed connector.  
 When installing, please refrain from stress concentration such as cable bending close to the connector end or cable twisting.

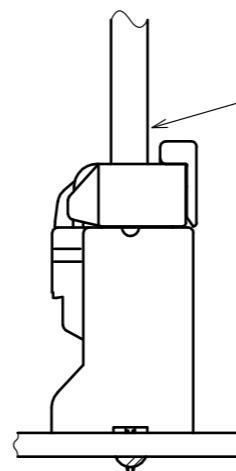


Stress concentration:  
 Cable bending close to connector



NG

No stress concentration:  
 No cable bending close to connector



OK



- 2) Since this product uses thick wires, a larger load is applied to the connector when inserting/extracting or routing the wires.  
 Please use a retainer to reduce the load on the connector.

<b>HRS</b>	DRAWING NO.	EDC-163719-06-00	2/2
	PART NO.	DF22-*P-7.92DSA(06)	
	CODE NO.	CL680-	