



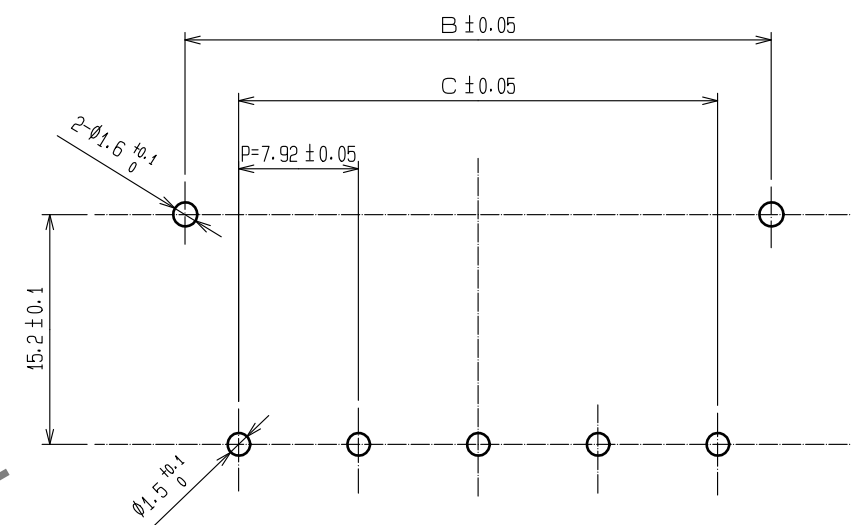
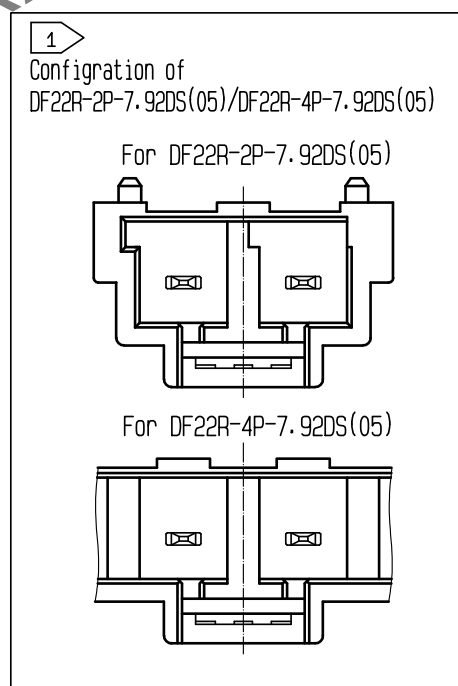
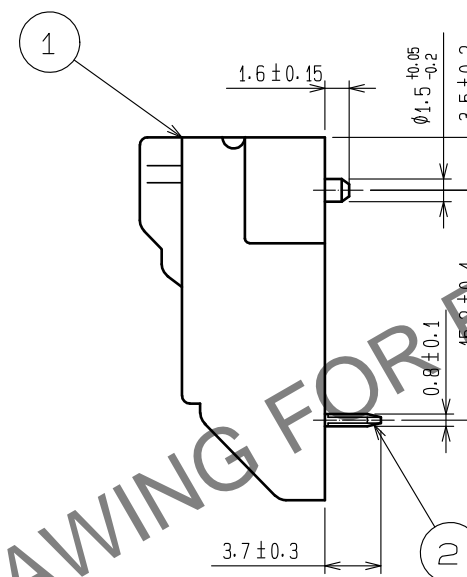
Notes

2:UL(File no.E52653)
C-UL(File no.E52653)

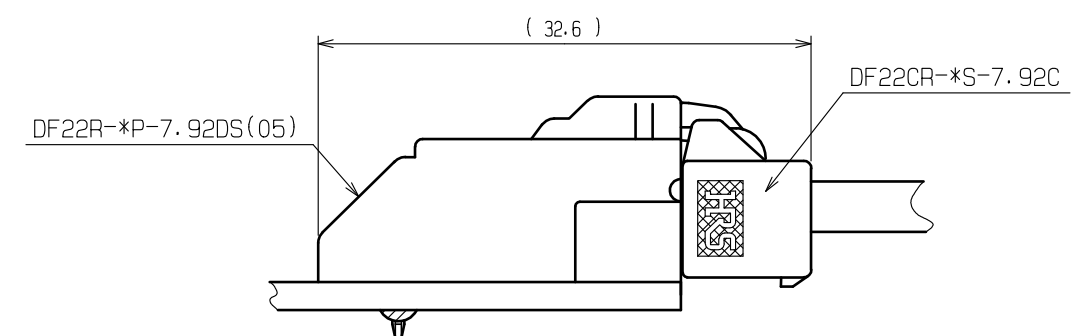
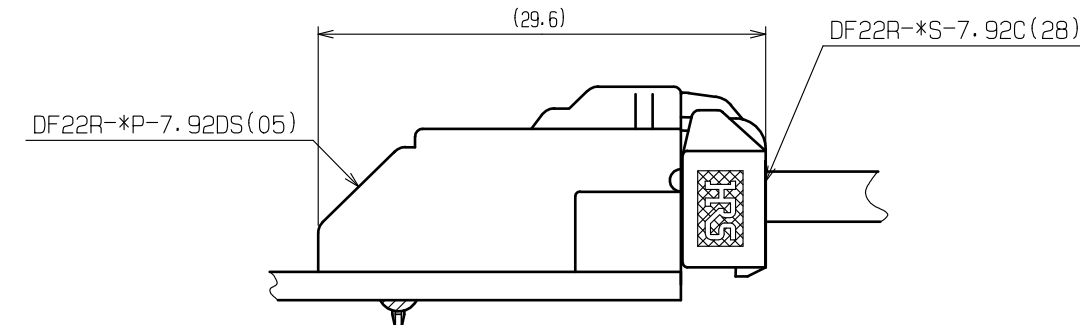



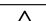
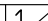
3:PER PACK:100PIECES

Part No.	Code No.	Number of contact	A	B	C
DF22R-2P-7.92DS(05)	CL680-1018-9-05	2	19.80	15.00	7.92
DF22R-3P-7.92DS(05)	CL680-1019-1-05	3	27.72	22.92	15.84
DF22R-4P-7.92DS(05)	CL680-1020-0-05	4	35.64	30.84	23.76
DF22R-5P-7.92DS(05)	CL680-1021-3-05	5	43.56	38.76	31.68



Application diagram



1	Polyamide	BLACK, UL94V-0		2	Copper alloy	Surface: Tin-copper plated 1μm min Under plated: Nickel plated 0.5μm min			
NO.	MATERIAL	FINISH . REMARKS			NO.	MATERIAL	FINISH . REMARKS		
UNITS mm		SCALE 2 : 1	COUNT 	DESCRIPTION OF REVISIONS		DESIGNED	CHECKED	DATE	
			1	DIS-H-00003735		TO. KUROMATSU	TS. FUKUSHIMA	18. 04. 11	
 HIROSE ELECTRIC CO., LTD.		APPROVED : KJ. KATAYOSE		05. 01. 05	DRAWING NO.	EDC-306228-05-01			
		CHECKED : TY. OMA		05. 01. 05	PART NO.	DF22R-*P-7. 92DS(05)			
		DESIGNED : HK. UMEHARA		05. 01. 05	CODE NO.	CL680-			
		DRAWN : HK. UMEHARA		05. 01. 05	 				

Apr.1.2024 Copyright 2024 HIROSE ELECTRIC CO., LTD. All Rights Reserved.
In case of consideration for using Automotive equipment / device which demand high reliability, kindly contact our sales window correspondents.

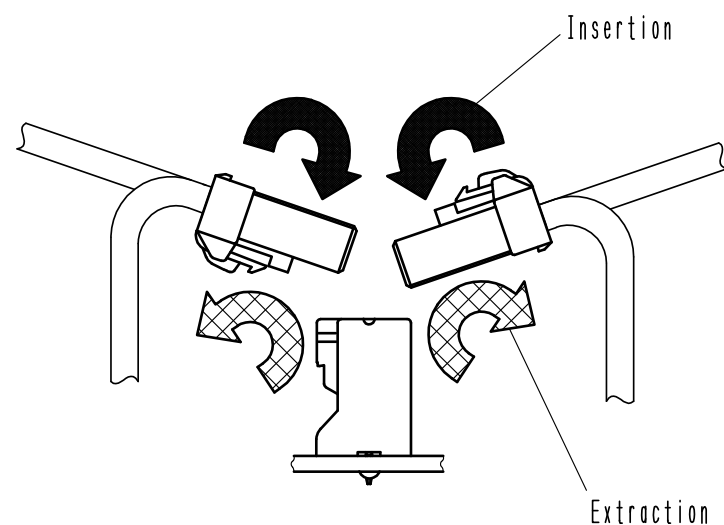


Precautions

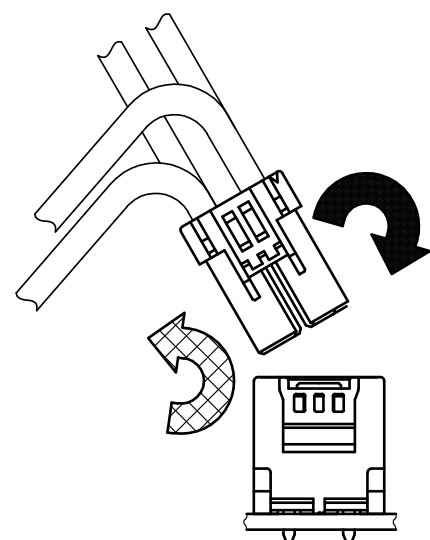
Notification for Insertion/Extraction

- 1) Please insert(extract) the crimping socket straight to the mating connector.
Insertion(extraction) at tilted angles applies load concentration to the connector end and may cause deformation (at connection area, socket and header case, etc). There is firing risk using this kind of deformed connector.

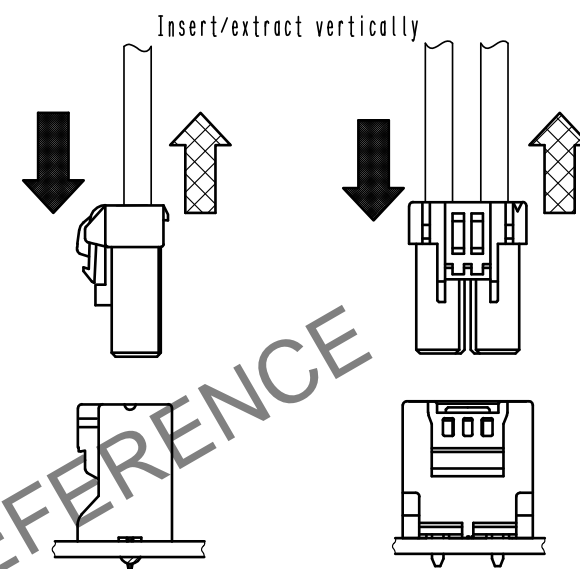
Insertion(Extraction)



NG



NG

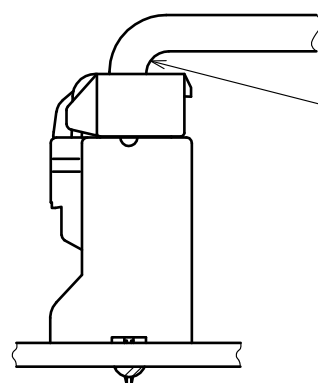


OK

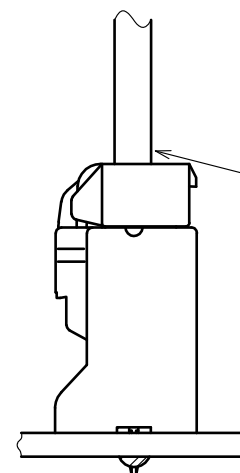
- 2) When it is hard to extract, please lightly insert the connector beforehand and then pull it with releasing the lock.
Forced extraction has a risk of connector breakage.

Notification of wiring

- 1) When using a thick cable, short cable length and bending close to the connector end, these load concentration may cause deformation.
Please note that there is firing risk using deformed connector.
When installing, please refrain from stress concentration such as cable bending close to the connector end or cable twisting.



NG



OK

- 2) When applying load to connector end, please use the retainer for reducing the stress affection on the connector.
Retainer shall be installed after inserted crimping contact completely. It might be impossible to insert it when terminal installation is incompleated.

HRS

DRAWING NO.	EDC-306228-05-01
PART NO.	DF22R-*P-7.92DS(05)
CODE NO.	CL680-

2/2