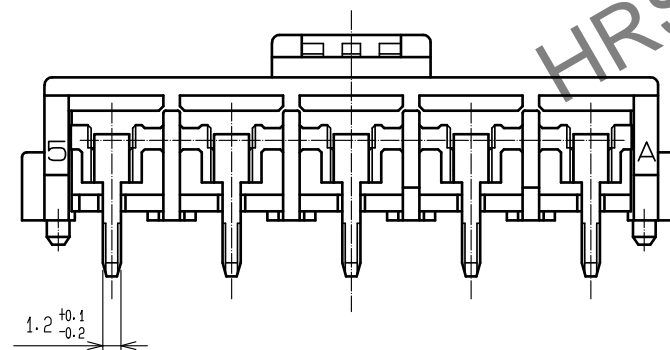
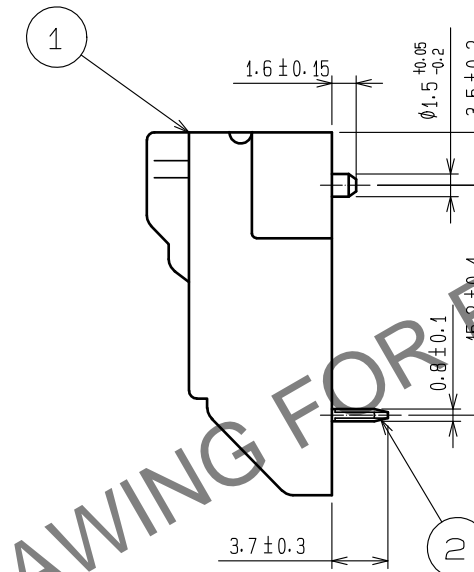
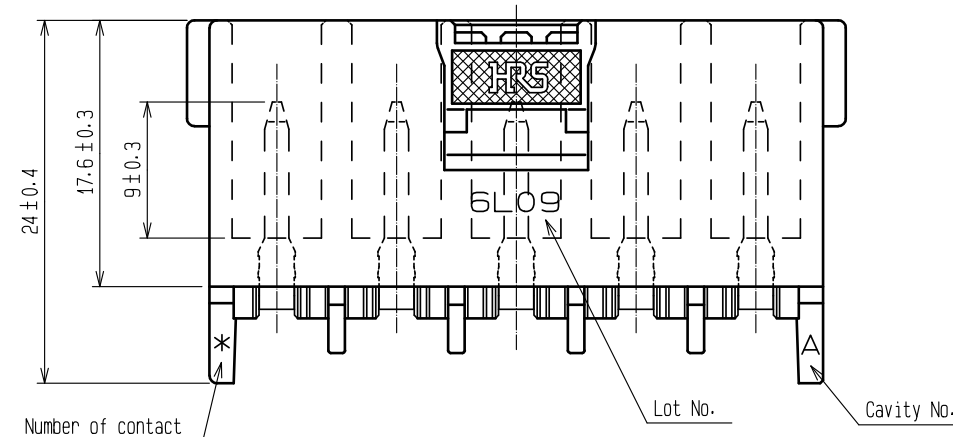




Part No.	Code No.	Number of contact	A	B	C
DF22A-2P-7.92DS(06)	-	2	19.80	15.00	7.92
DF22A-3P-7.92DS(06)	CL680-1019-1-06	3	27.72	22.92	15.84
DF22A-4P-7.92DS(06)	-	4	35.64	30.84	23.76
DF22A-5P-7.92DS(06)	-	5	43.56	38.76	31.68

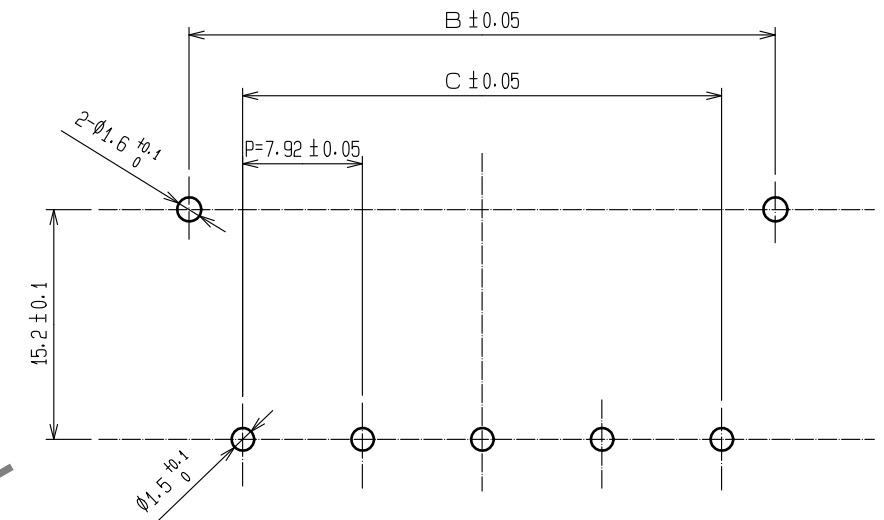
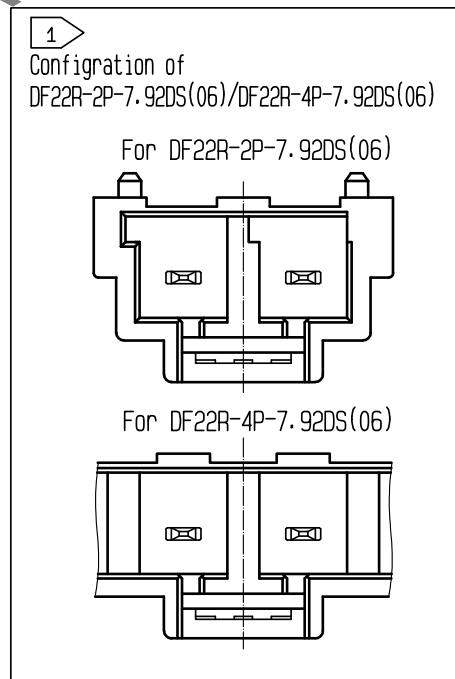


Notes 1 TWO AND FOUR CONTACTS ARE DIFFERENT SHAPE AS SHOWN.

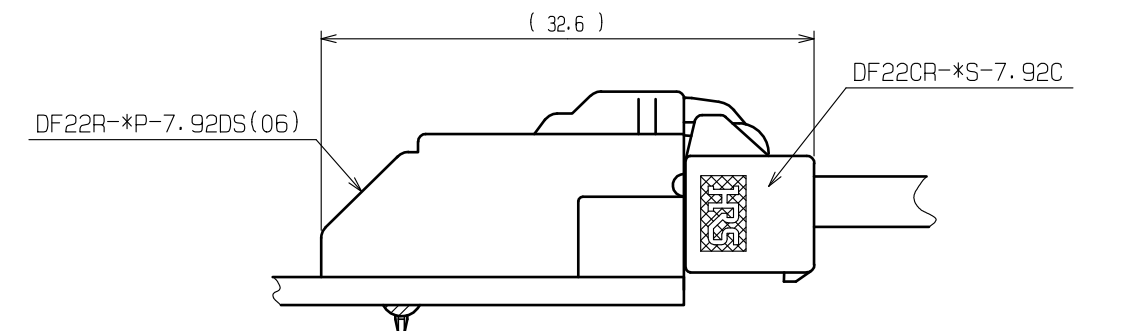
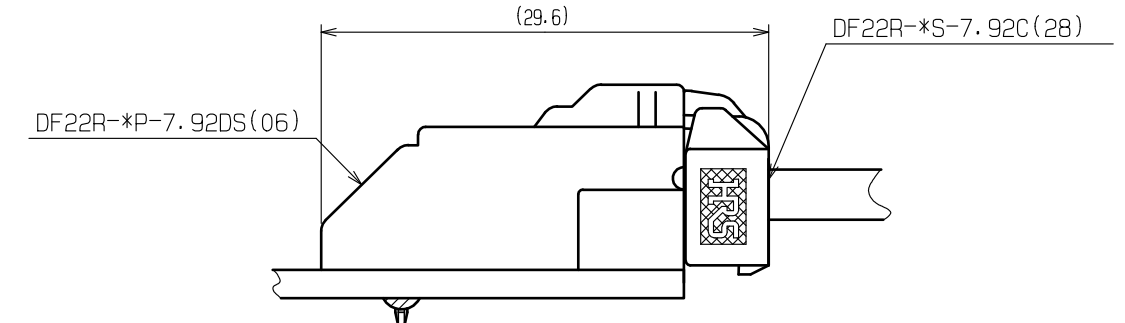
2:UL(File no.E52653)  
C-UL(File no.E52653)  
TÜV(Certificate no.R9950703)




3:PER PACK:100PIECES



### Application diagram



				2		Copper alloy		Contact area:Gold plating 0.2μm min Lead area:Tin-copper plating 1μm min Under plating:Nickel platig 1μm min Other:Nickel plating 1μm min				
1	Polyamide		BLACK・UL94V-O									
NO.	MATERIAL		FINISH . REMARKS			NO.	MATERIAL		FINISH . REMARKS			
UNITS mm		SCALE 2 : 1		COUNT	DESCRIPTION OF REVISIONS		DESIGNED		CHECKED	DATE		
 HIROSE ELECTRIC CO., LTD.		APPROVED : HS. OKAWA			18. 04. 12	DRAWING NO.	EDC-306228-06-00					
		CHECKED : TS. FUKUSHIMA			18. 04. 12	PART NO.	DF22R- *P-7. 92DS(06)					
		DESIGNED : TO. KUROMATSU			18. 04. 12	CODE NO.	CL680-					
		DRAWN : TO. KUROMATSU			18. 04. 12							
											1	2

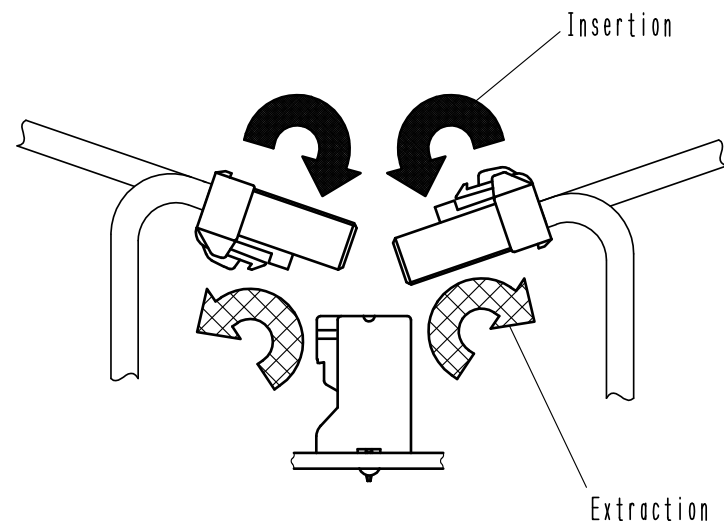
May.1.2024 Copyright 2024 HIROSE ELECTRIC CO., LTD. All Rights Reserved.  
In case of consideration for using Automotive equipment / device which demand high reliability, kindly contact our sales window correspondents.

# Precautions

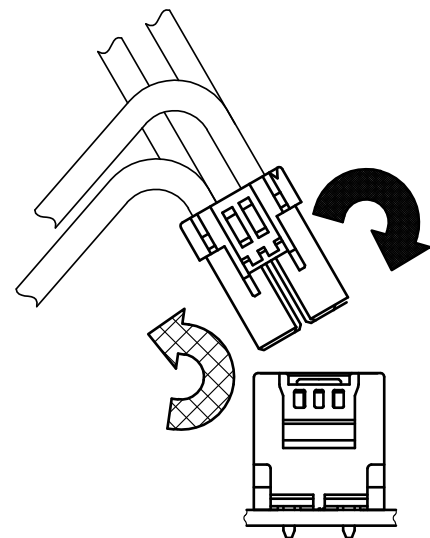
## Notification for Insertion/Extraction

- 1) Please insert(extract) the crimping socket straight to the mating connector.  
Insertion(extraction) at tilted angles applies load concentration to the connector end and may cause deformation (at connection area, socket and header case, etc). There is firing risk using this kind of deformed connector.

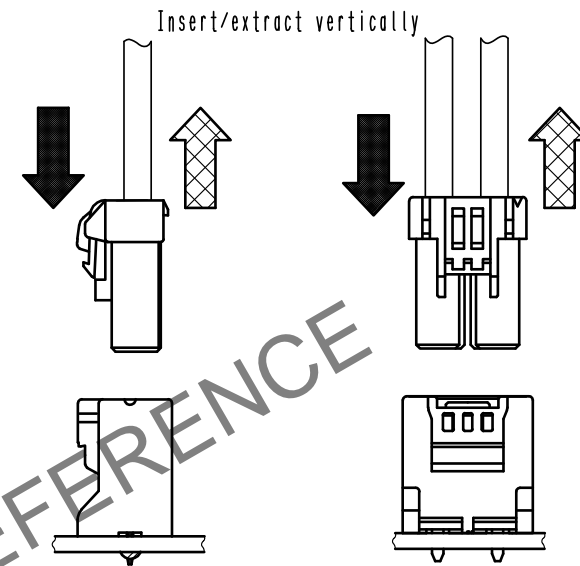
Insertion(Extraction)



NG



NG

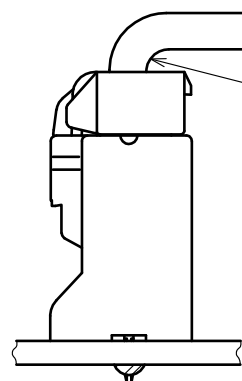


OK

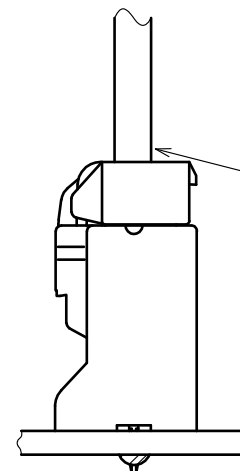
- 2) When it is hard to extract, please lightly insert the connector beforehand and then pull it with releasing the lock.  
Forced extraction has a risk of connector breakage.

## Notification of wiring

- 1) When using a thick cable, short cable length and bending close to the connector end, these load concentration may cause deformation.  
Please note that there is firing risk using deformed connector.  
When installing, please refrain from stress concentration such as cable bending close to the connector end or cable twisting.



NG



OK

- 2) When applying load to connector end, please use the retainer for reducing the stress affection on the connector.  
Retainer shall be installed after inserted crimping contact completely. It might be impossible to insert it when terminal installation is incompleated.

HRS

DRAWING NO.	EDC-306228-06-00
PART NO.	DF22R-*P-7.92DS(06)
CODE NO.	CL680-

2/2