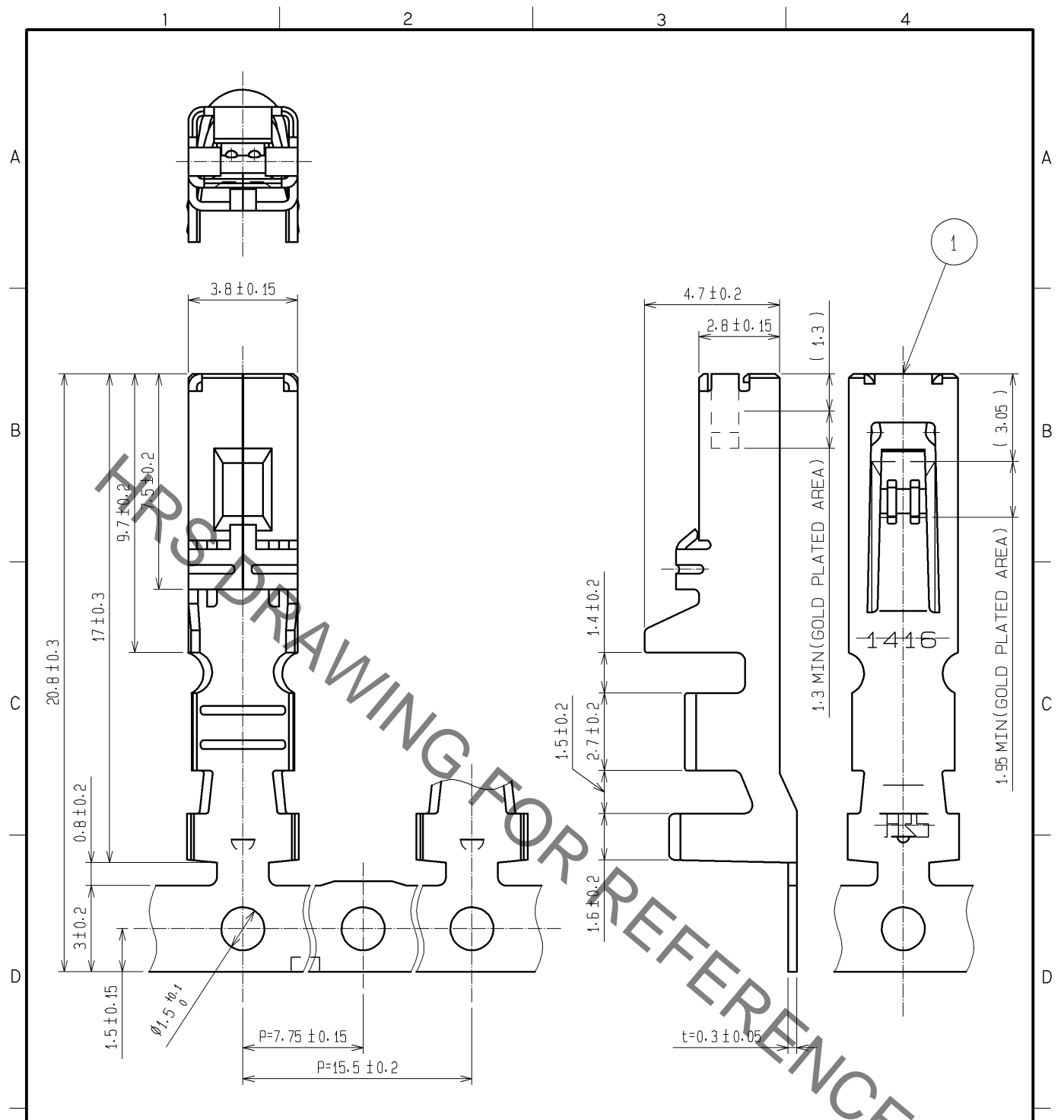


Oct.1.2019 Copyright 2019 HIROSE ELECTRIC CO., LTD. All Rights Reserved.
 In case of consideration for using Automotive equipment / device which demand high reliability, kindly contact our sales window correspondents.



1. 2000 CONTACTS PER REEL.
2. UL (FILE NO. E52653),
- C:UL (FILE NO. E52653),
- TUV (CERTIFICATE NO. R9950703) RECOGNIZED PRODUCT.



				1		COPPER ALLOY		CONTACT AREA: GOLD PLATED 0.2 μm BARREL AREA (OUTSIDE): TIN PLATED 1 μm OTHERS: NICKEL PLATED 0.5 μm	
NO.	MATERIAL	FINISH, REMARKS		NO.	MATERIAL	FINISH, REMARKS			
UNITS mm		SCALE 5 : 1	COUNT 	DESCRIPTION OF REVISIONS		DESIGNED	CHECKED	DATE	
HIROSE ELECTRIC CO., LTD.		APPROVED : KI. AKIYAMA		13.06.13	DRAWING NO.		EDC4-163659-01		
		CHECKED : HK. UMEHARA		13.06.13	PART NO.		DF22-1416SCFA		
		DESIGNED : ST. SATO		13.06.13	CODE NO.		CL680-1085-6-00		
		DRAWN : ST. SATO		13.06.13			1/1		