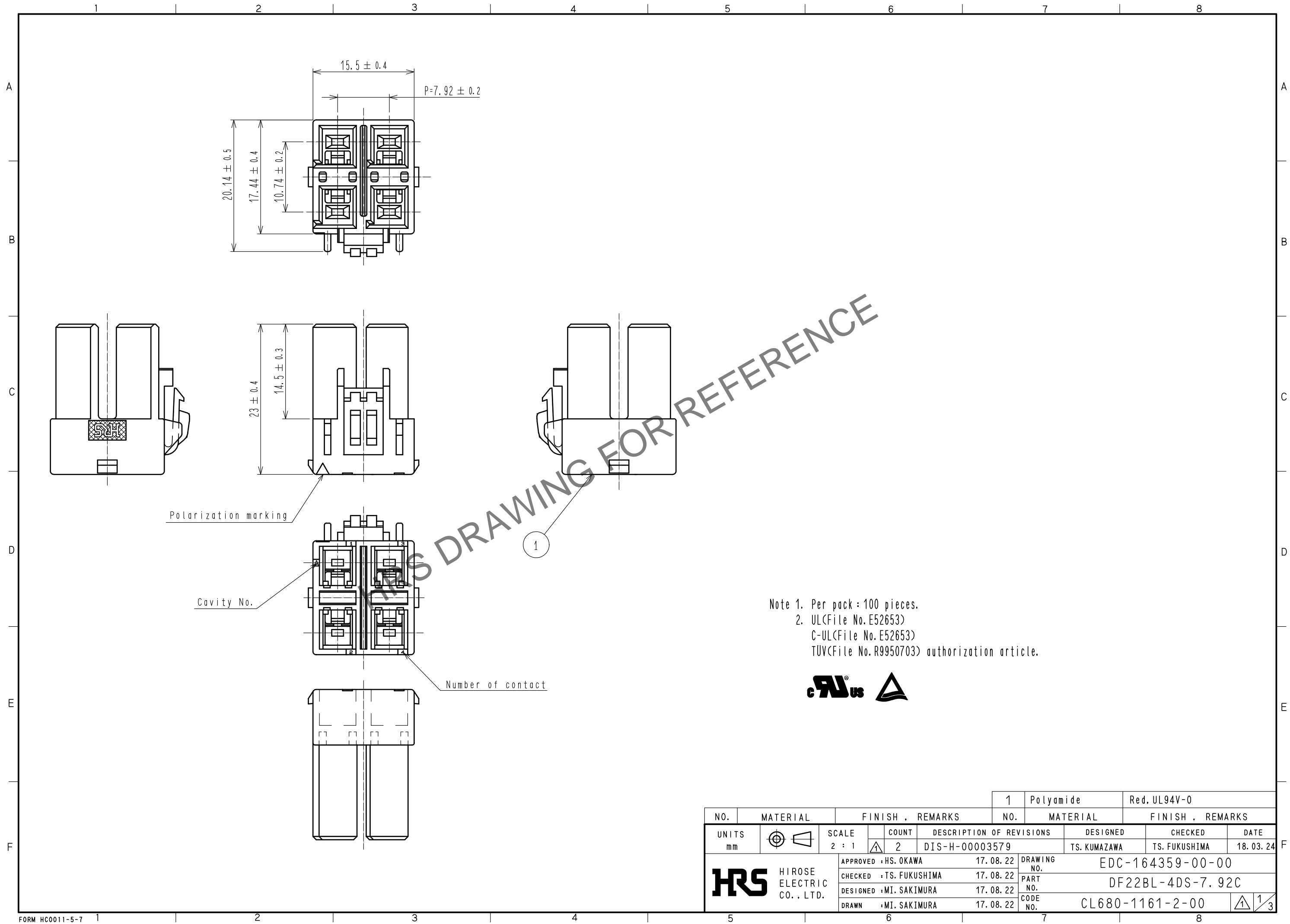


Apr.1.2024 Copyright 2024 HIROSE ELECTRIC CO., LTD. All Rights Reserved.
In case of consideration for using Automotive equipment / device which demand high reliability, kindly contact our sales window correspondents.



Note 1. Per pack : 100 pieces.
2. UL<File No. E52653>
C-UL<File No. E52653>
TUV<File No. R9950703> authorization article.



				1	Polyamide		Red. UL94V-0	
				NO.	MATERIAL		FINISH . REMARKS	
UNITS mm			SCALE 2 : 1		COUNT 2	DESCRIPTION OF REVISIONS DIS-H-00003579		DESIGNED TS. KUMAZAWA
		HIROSE ELECTRIC CO., LTD.		APPROVED : HS. OKAWA		17.08.22	DRAWING NO. EDC-164359-00-00	
				CHECKED : TS. FUKUSHIMA		17.08.22	PART NO. DF22BL-4DS-7.92C	
				DESIGNED : MI. SAKIMURA		17.08.22	CODE NO. CL680-1161-2-00	
				DRAWN : MI. SAKIMURA		17.08.22	1/3	

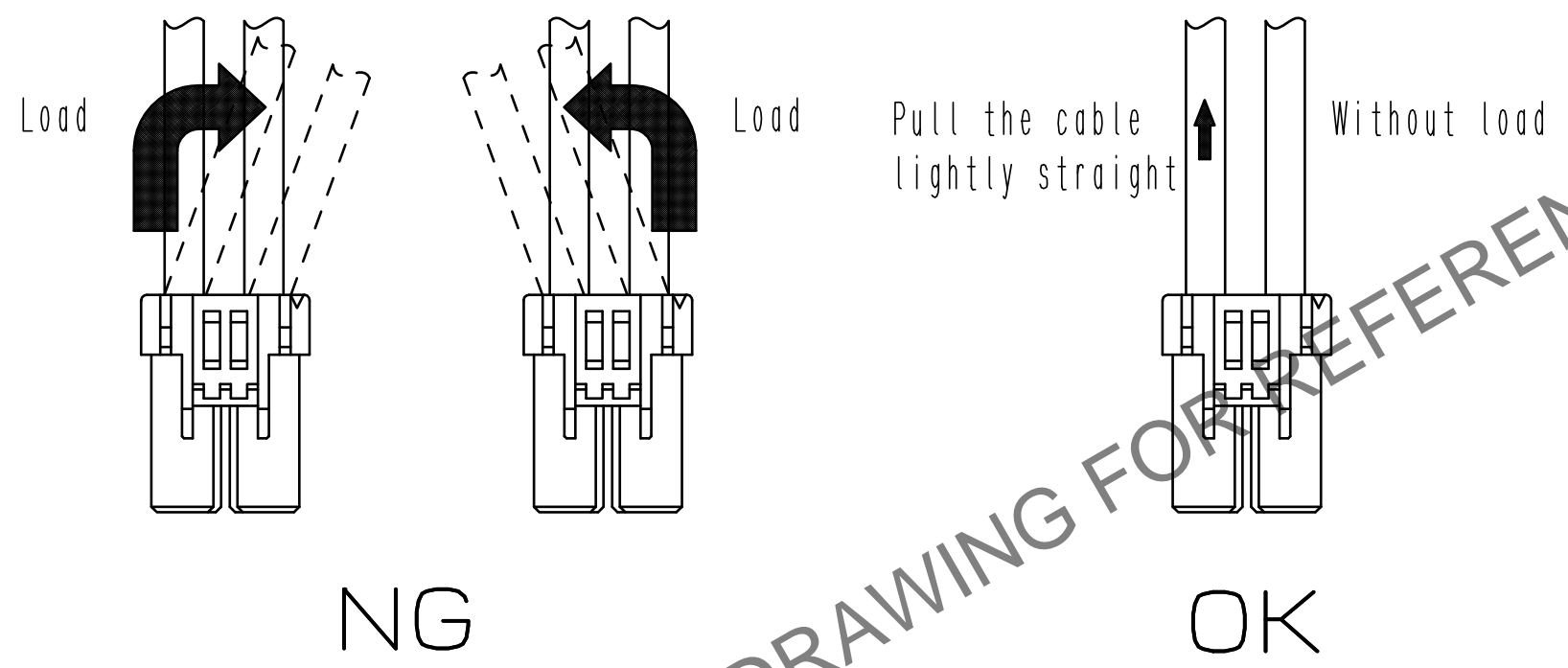
Apr.1.2024 Copyright 2024 HIROSE ELECTRIC CO., LTD. All Rights Reserved.
In case of consideration for using Automotive equipment / device which demand high reliability, kindly contact our sales window correspondents.



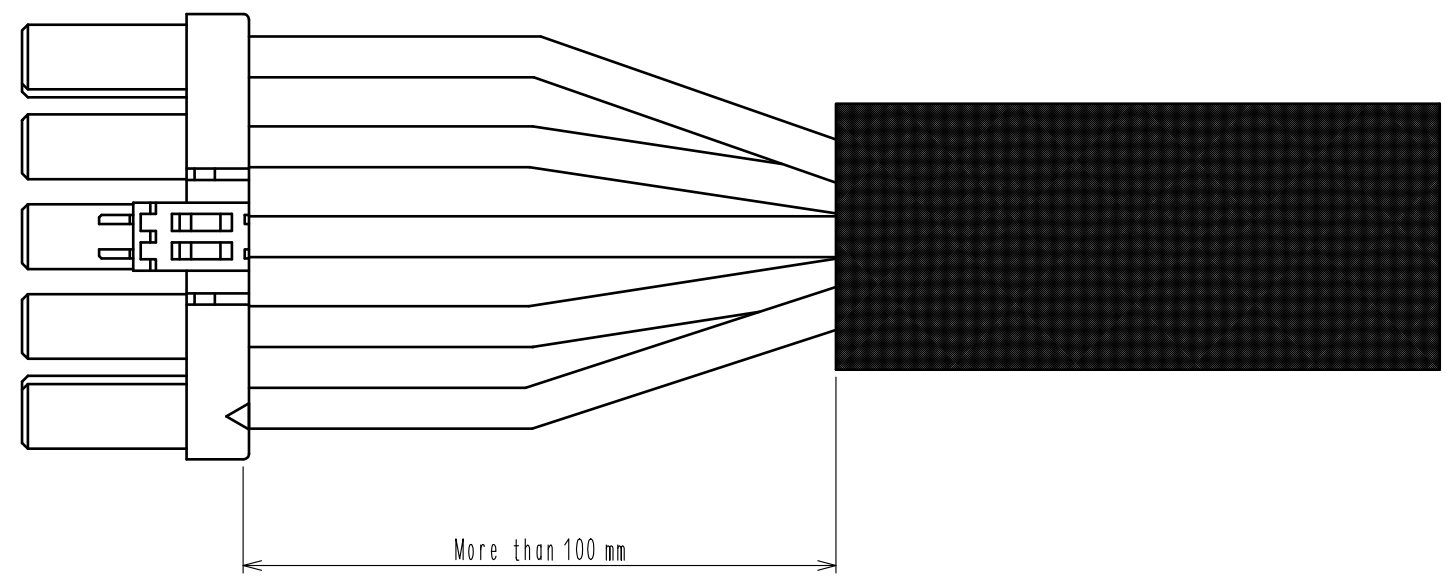
Precautions

Notification for harness assembly

- 1) When inserting the crimping terminal to the crimping socket, please do not tilt the crimping terminal or twist the cable.
Insertion at tilted angles or twisting the cable may cause deformation of the crimping terminal or crimping socket.
- 2) After inserting the crimping terminal to the crimping socket, please make sure that the lance has been hooked with pulling the cable lightly.
When checking the hook, please avoid bending the cable for preventing terminal drop-off.



- 3) Bundle cables/Cabtyre Cables
Recommend bundle and strip position of cables are 100 mm or more.
Bunding close to the connectors may cause terminal drop-off, breaking cables and unstable connection.



DRAWING NO.	EDC-164359-00-00
PART NO.	DF22BL-4DS-7. 92C
CODE NO.	CL680-1161-2-00

1

2

3

Apr.1.2024 Copyright 2024 HIROSE ELECTRIC CO., LTD. All Rights Reserved.
In case of consideration for using Automotive equipment / device which demand high reliability, kindly contact our sales window correspondents.

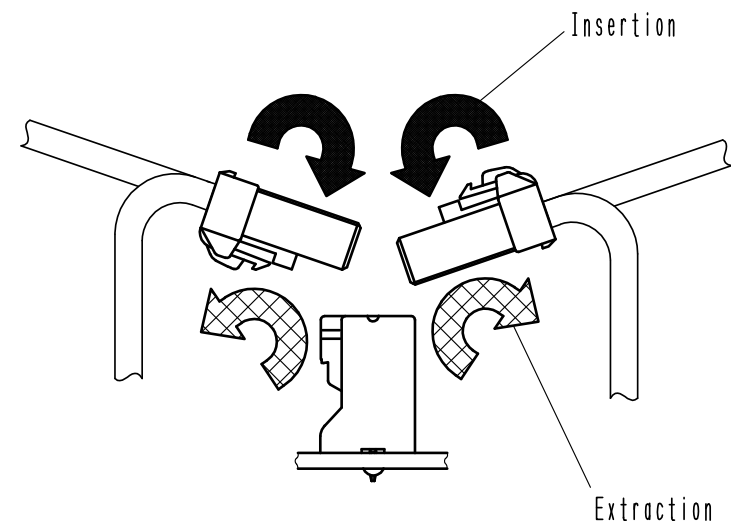


Precautions

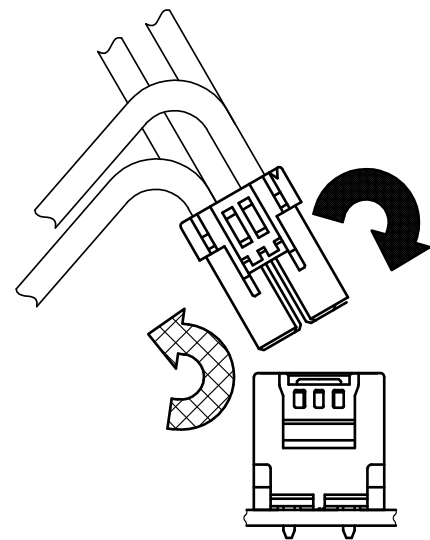
Notification for Insertion/Extraction

- 1) Please insert(extract) the crimping socket straight to the mating connector.
Insertion(extraction) at tilted angles applies load concentration to the connector end and may cause deformation (at connection area, socket and header case, etc). There is firing risk using this kind of deformed connector.

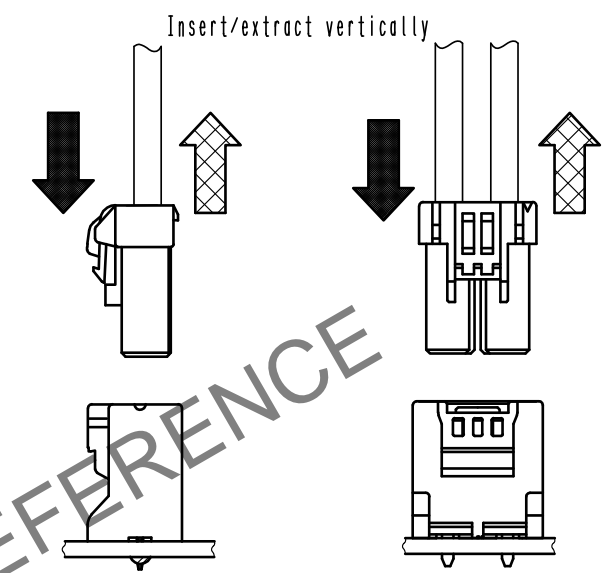
Insertion(Extraction)



NG



NG

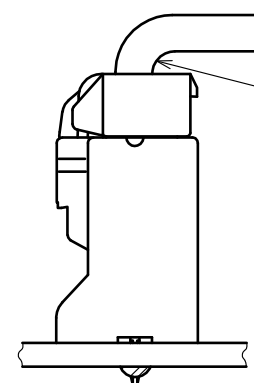


OK

- 2) When it is hard to extract, please lightly insert the connector beforehand and then pull it with releasing the lock.
Forced extraction has a risk of connector breakage.

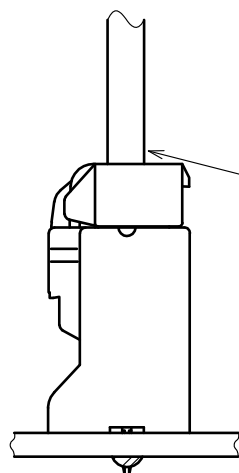
Notification of wiring

- 1) When using a thick cable, short cable length and bending close to the connector end, these load concentration may cause deformation.
Please note that there is firing risk using deformed connector.
When installing, please refrain from stress concentration such as cable bending close to the connector end or cable twisting.



NG

Stress concentration;
Cable bending close
to connector



OK

No stress concentration;
No cable bending close
to connector

- 2) When applying load to connector end, please use the retainer for reducing the stress affection on the connector.
Retainer shall be installed after inserted crimping contact completely. It might be impossible to insert it when terminal installation is incompleated.



DRAWING NO.	EDC-164359-00-00
PART NO.	DF22BL-4DS-7.92C
CODE NO.	CL680-1161-2-00