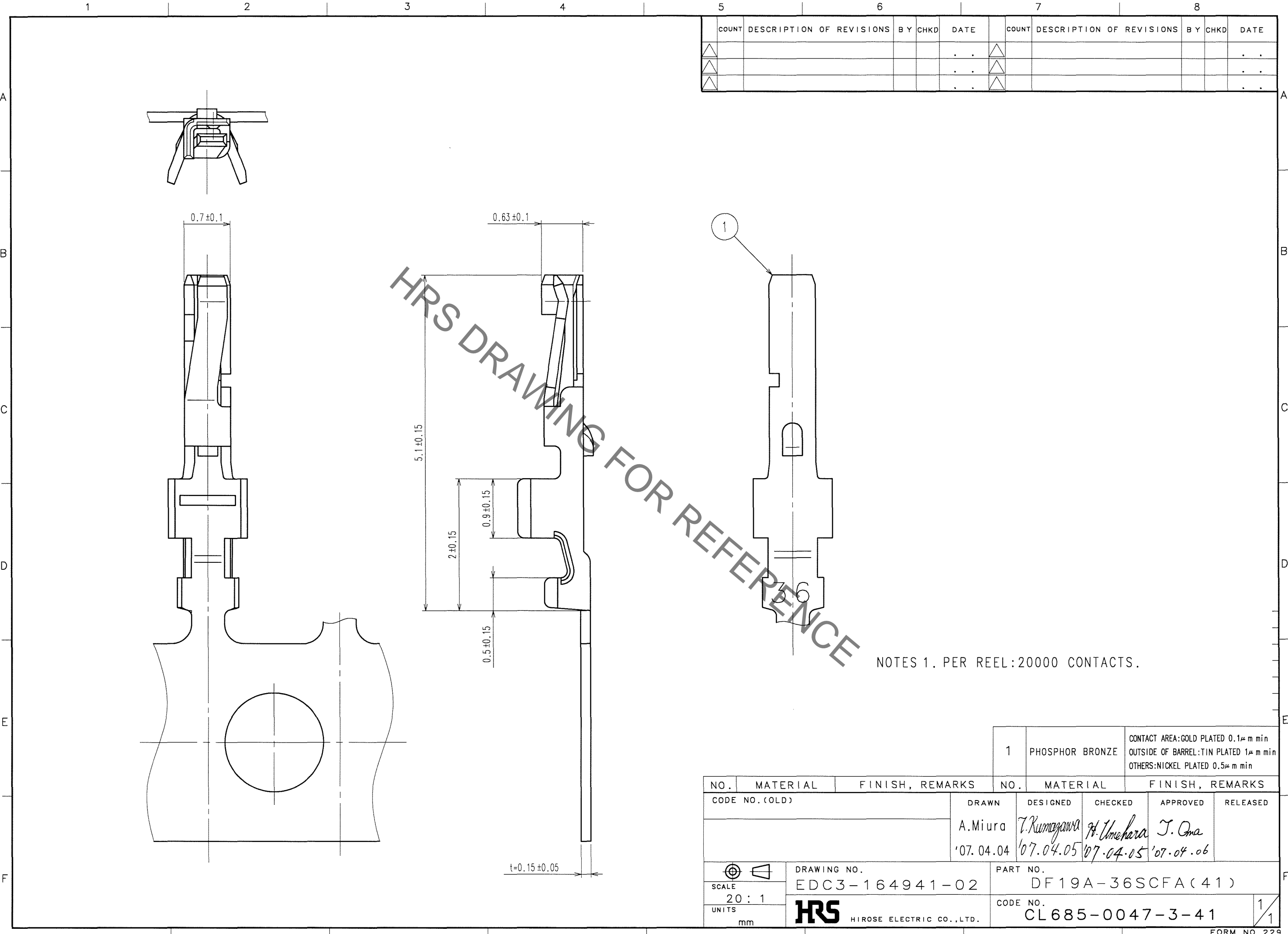


Oct.1.2019 Copyright 2019 HIROSE ELECTRIC CO., LTD. All Rights Reserved.
 In case of consideration for using Automotive equipment / device which demand high reliability, kindly contact our sales window correspondents.



| COUNT | DESCRIPTION OF REVISIONS | BY | CHKD | DATE | COUNT | DESCRIPTION OF REVISIONS | BY | CHKD | DATE |
|-------|--------------------------|----|------|------|-------|--------------------------|----|------|------|
| △ | | | | .. | △ | | | | .. |
| △ | | | | .. | △ | | | | .. |
| △ | | | | .. | △ | | | | .. |

NOTES 1. PER REEL: 20000 CONTACTS.

| |
|----|
| TO |
| |
| |
| |

| 1 | | PHOSPHOR BRONZE | CONTACT AREA: GOLD PLATED 0.1μm min OUTSIDE OF BARREL: TIN PLATED 1μm min OTHERS: NICKEL PLATED 0.5μm min | | | | |
|-------------------------------|----------|-------------------------------|---|-----------------------------|-----------------|-----------|----------|
| NO. | MATERIAL | FINISH, REMARKS | NO. | MATERIAL | FINISH, REMARKS | | |
| CODE NO. (OLD) | | | DRAWN | DESIGNED | CHECKED | APPROVED | RELEASED |
| | | | A.Miura | T.Kumagawa | H.Umehara | J.Oma | |
| | | | '07.04.04 | '07.04.05 | '07.04.05 | '07.04.06 | |
| DRAWING NO. EDC3-164941-02 | | PART NO. DF19A-36SCFA(41) | | | | | |
| UNITS mm | | HRS HIROSE ELECTRIC CO., LTD. | | CODE NO. CL685-0047-3-41 | | 1/1 | |