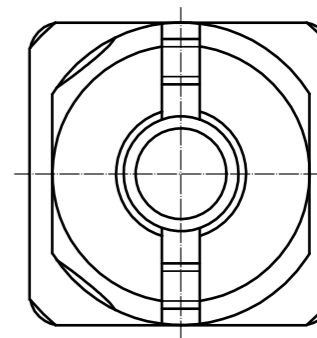
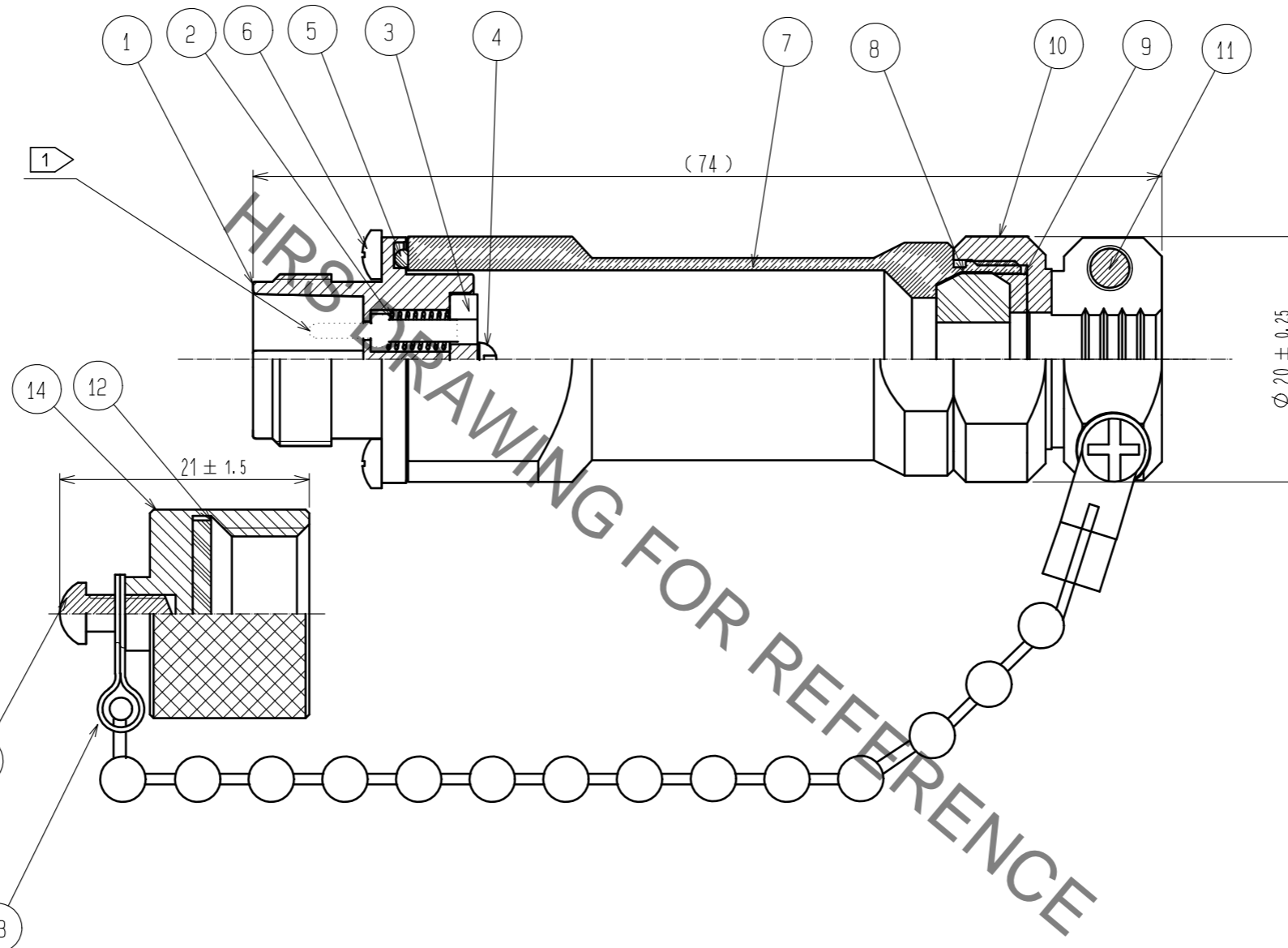
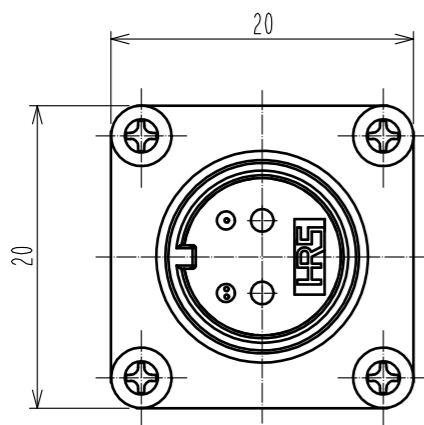


Nov.1.2019 Copyright 2019 HIROSE ELECTRIC CO., LTD. All Rights Reserved.
In case of consideration for using Automotive equipment / device which demand high reliability, kindly contact our sales window correspondents.



NOTE 1 THIS PART IS NOT CONTAINED. PLEASE USE AN OPTIONAL MU FERRULE.

7	BRASS	NICKEL PLATING	14	ALUMINIUM ALLOY	ANODIC OXIDE COATING
6	STAINLESS STEEL	_____	13	STAINLESS STEEL	_____
5	SYNTHETIC RUBBER	_____	12	SYNTHETIC RUBBER	_____
4	STAINLESS STEEL	_____	11	STAINLESS STEEL	NYELOCK
3	SYNTHETIC RESIN	_____	10	BRASS	NICKEL PLATING
2	PIANO WIRE	ZINC PLATING	9	SYNTHETIC RESIN	_____
1	ZINC DIECAST	NICKEL PLATING	8	SYNTHETIC RUBBER	_____
NO.	MATERIAL	FINISH . REMARKS	NO.	MATERIAL	FINISH . REMARKS

UNITS mm			SCALE 2 : 1		DESCRIPTION OF REVISIONS	DESIGNED	CHECKED	DATE
HRS HIROSE ELECTRIC CO., LTD.			APPROVED : MT. SHIBUTANI	18.03.28	DRAWING NO.	EDC-176608-31-00		
			CHECED : MT. SHIBUTANI	18.03.28	PART NO.	MF10S-WJN7C01-0200(31)		
			DESIGNED : FS. YOSHIDA	18.03.28	CODE NO.	CL709-0547-1-31		
			DRAWN : FS. YOSHIDA	18.03.28				