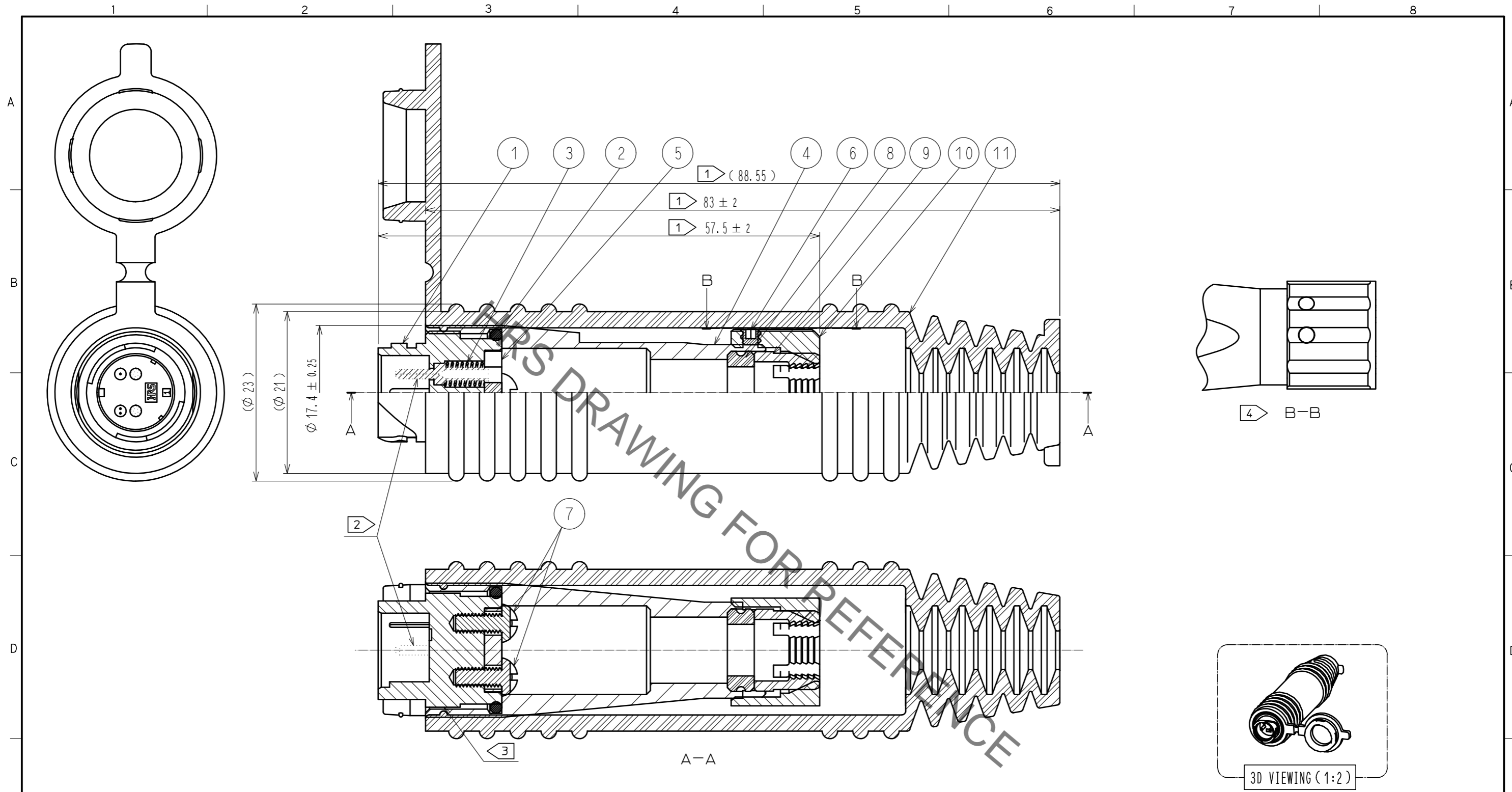


Oct.1.2020 Copyright 2020 HIROSE ELECTRIC CO., LTD. All Rights Reserved.  
 In case of consideration for using Automotive equipment / device which demand high reliability, kindly contact our sales window correspondents.



NOTE

- ① These are indicates the dimensions of after assembling
- ② Ferrules are not included in this product. MU Ferrules are sold separately.
- ③ Apply adhesive to around the threads of R-shell-J(part No.1) before tighten Hood(part No.4).
- ④ Clamp ring has two holes for fixing hexagon socket screw.  
Tighten the screw at visible either hole with tightening torque 25N·cm. or either hole if both holes are visible.

6	STAINLESS STEEL				
5	PBT RESIN	COLOR:BLACK	11	SILICONE RUBBER	COLOR:BLACK
4	ALUMINUM ALLOY	ANODIC OXIDE COATING	10	ZINC ALLOY DIE CASTING	NICKEL PLATING
3	PIANO WIRE	ZINC PLATING * BAKING	9	PA RESIN	COLOR:WHITE
2	NITRILE BUTADIENE RUBBER	COLOR:BLACK	8	CHLOROPRENE RUBBER	COLOR:BLACK
1	ZINC ALLOY DIE CASTING	NICKEL PLATING	7	STAINLESS STEEL	
NO.	MATERIAL	FINISH . REMARKS	NO.	MATERIAL	FINISH . REMARKS

UNITS mm			SCALE 2 : 1	COUNT 	DESCRIPTION OF REVISIONS	DESIGNED	CHECKED	DATE
<b>HRS</b> HIROSE ELECTRIC CO., LTD.			APPROVED : MT. SHIBUTANI	18.02.02	DRAWING NO.	EDC-177028-31-00		
			CHECKED : FS. YOSHIDA	18.02.02	PART NO.	MF10B-WJ6. 5C01-0200(31)		
			DESIGNED : TY. SATO	18.02.02	CODE NO.	CL709-1011-7-31		
			DRAWN : MK. INOUE	18.02.02				