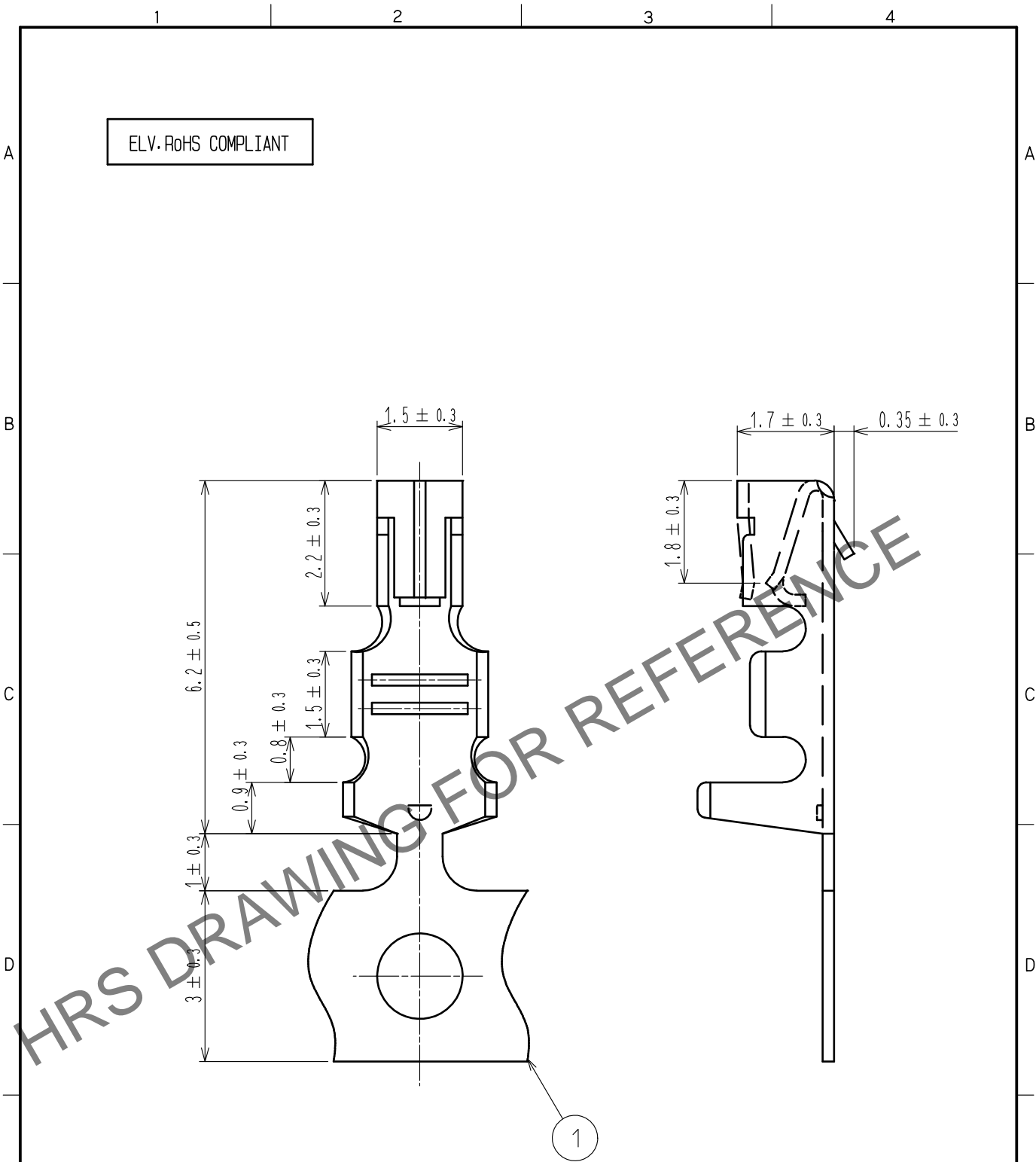


Mar.1.2024 Copyright 2024 HIROSE ELECTRIC CO., LTD. All Rights Reserved.
In case of consideration for using Automotive equipment / device which demand high reliability, kindly contact our sales window correspondents.



NOTE1. 10000 PIECES PER REEL.

2. REGARDING HOW TO HANDLE THE PACKAGED PRODUCTS, PLEASE REFER TO
THE ATAD-T0946-00「INSTRUCTION MANUAL FOR HANDLING OF REEL PACKAGING CONTAINING CRIMP TERMINALS」

1	PHOSPHOR BRONZE	TIN PLATED						
NO.	MATERIAL	FINISH .	REMARKS	NO.	MATERIAL	FINISH .	REMARKS	
UNITS mm		SCALE 10: 1	COUNT 2	DESCRIPTION OF REVISIONS DIS-T-00013629	DESIGNED AN. SAIKI	CHECKED EJ. WAKATSUKI	DATE 20220530	
HIROSE ELECTRIC CO., LTD.		APPROVED	KS. SATOH	20070111	DRAWING NO.	EDC4-082342-01		
		CHECKED	KS. SATOH	20070111	PART NO.	GT8-2428SCF(70)		
		DESIGNED	SB. KURIYA	20070111	CODE NO.	CL0758-0001-8-70		
		DRAWN	SB. KURIYA	20070111				1/1