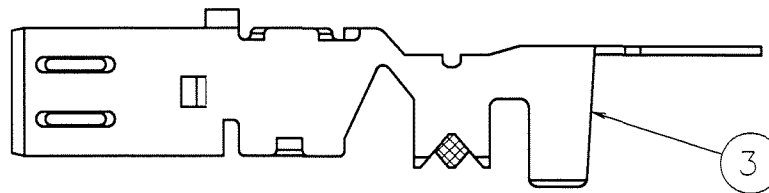
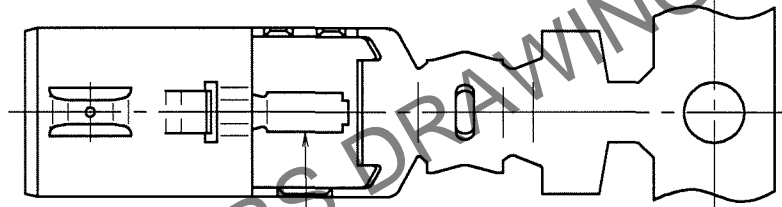
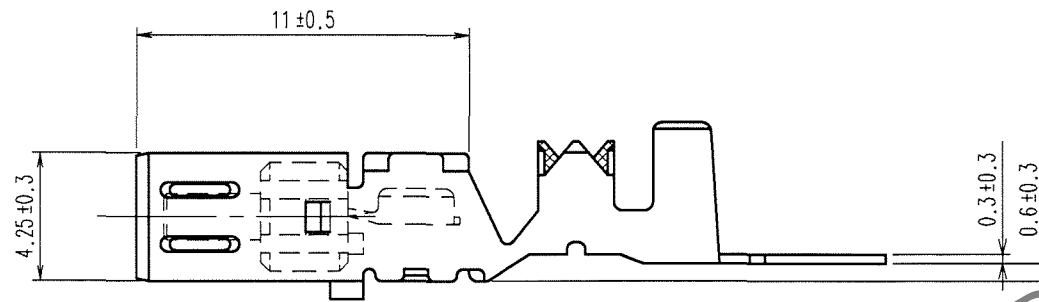
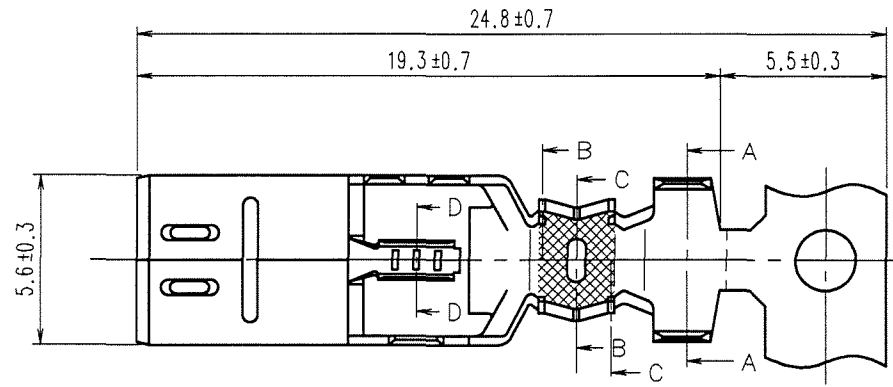
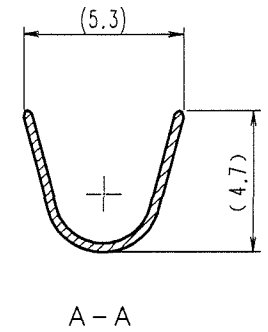
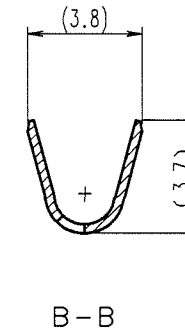
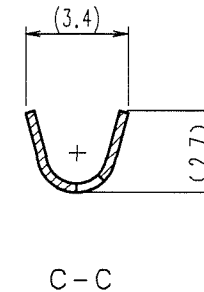
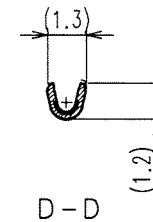


Mar.1.2024 Copyright 2024 HIROSE ELECTRIC CO., LTD. All Rights Reserved.  
In case of consideration for using Automotive equipment / device which demand high reliability, kindly contact our sales window correspondents.

ELV.RoHS COMPLIANT



COUNT	DESCRIPTION OF REVISIONS	BY	CHKD	DATE	COUNT	DESCRIPTION OF REVISIONS	BY	CHKD	DATE
△				..	△				..
△				..	△				..
△				..	△				..



- NOTES
- 1 PER REEL : 3000 CONTACTS
  - 2 THIS REEL DIAMETER SHALL BE 750, AND CRIMPING MACHINE NEEDS ADDITIONAL PARTS AS CM 105/RS-GT.

2	PBT	UL94HB , DARK GRAY	3	CUPPER ALLOY	TIN PLATED
1	CUPPER ALLOY	TIN PLATED			
NO.	MATERIAL	FINISH, REMARKS	NO.	MATERIAL	FINISH, REMARKS
CODE NO. (OLD) CL?		DRAWN S.KURIYA '06. 8. 30	DESIGNED M.OKADA '04. 10. 10	CHECKED K. Sato '06. 9. 1	APPROVED K. Sato '06. 9. 1
DRAWING NO. EDC3-165699-01		PART NO. GT13-30/1.6-2.9SCF (70)			
SCALE 1 : 1		CODE NO. CL763-0012-0-70			
UNITS mm		1/1			