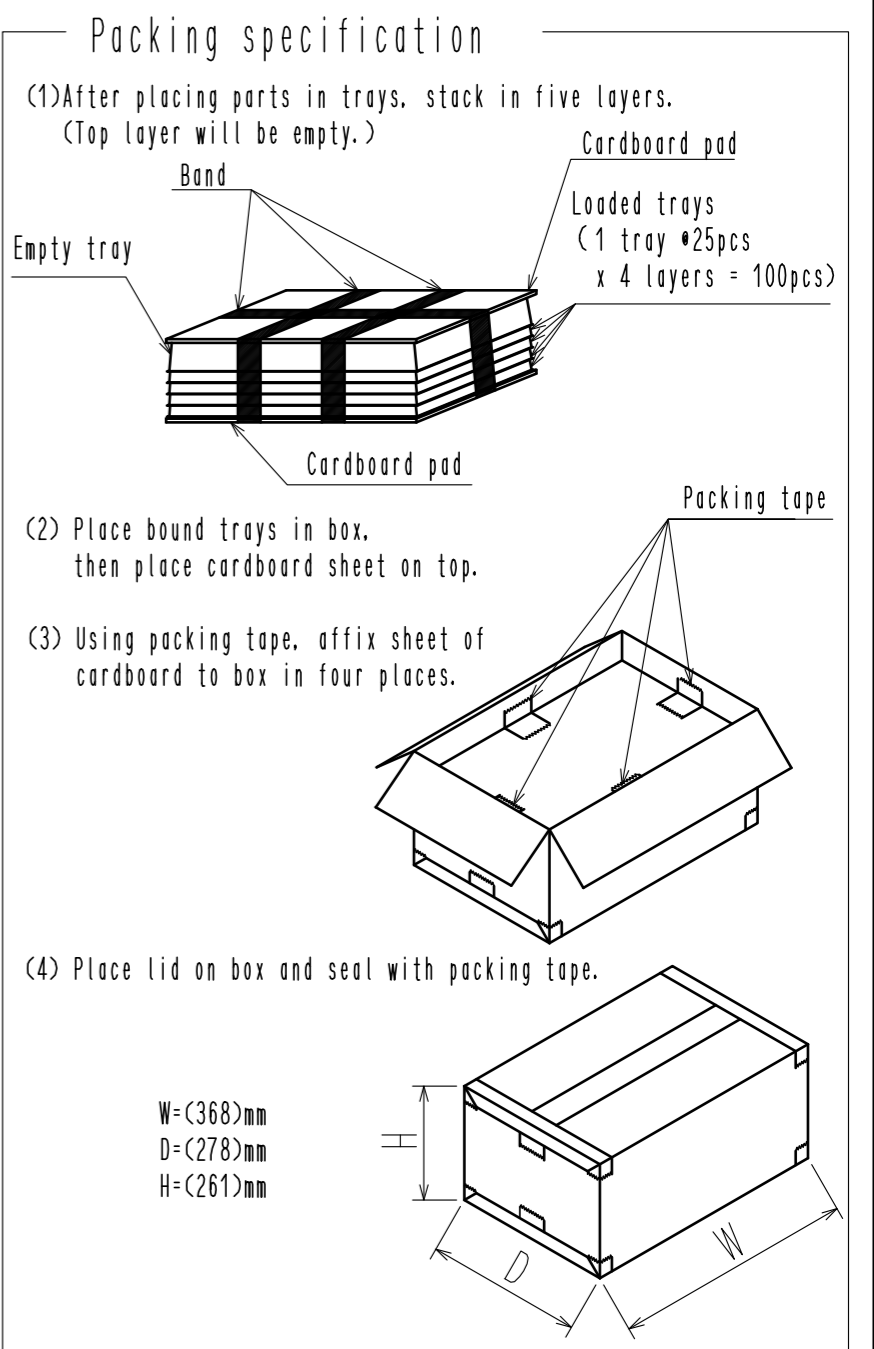
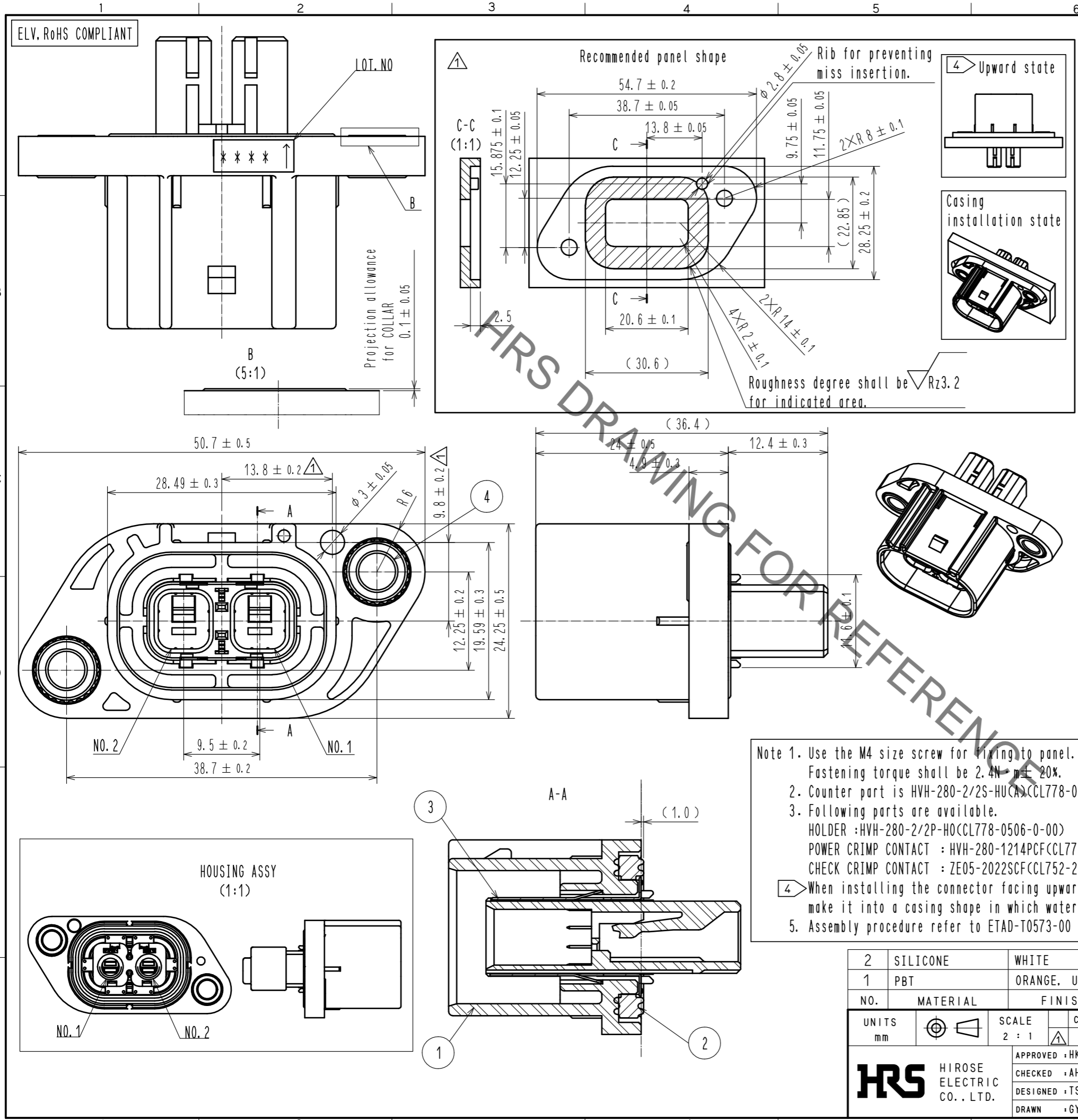


Mar.1.2020 Copyright 2020 HIROSE ELECTRIC CO., LTD. All Rights Reserved.
In case of consideration for using Automotive equipment / device which demand high reliability, kindly contact our sales window correspondents.



Note 1. Use the M4 size screw for fixing to panel.
Fastening torque shall be $2.4N \cdot m \pm 20\%$.

2. Counter part is HVH-280-2/2S-HU(A)(CL778-0508-0-00)

3. Following parts are available.
 HOLDER : HVH-280-2/2P-HO(CL778-0506-0-00)
 POWER CRIMP CONTACT : HVH-280-1214PCF(CL778-0501-0-00)
 CHECK CRIMP CONTACT : ZE05-2022SCF(CL752-2001-0-00)

4 When installing the connector facing upwards, make it into a casing shape in which water does not collect.

5. Assembly procedure refer to ETAD-T0573-00

2	SILICONE	WHITE	4	SWCH	SURFACE : NICKEL PLATING 5μm MIN				
1	PBT	ORANGE, UL94 V-0	3	SUS	SURFACE : TIN PLATING 1μm MIN UNDER PLATING : NICKEL PLATING 0.5μm MIN				
NO.	MATERIAL	FINISH . REMARKS	NO.	MATERIAL	FINISH . REMARKS				
UNITS	mm	SCALE	2 : 1	COUNT	3	DESCRIPTION OF REVISIONS	DESIGNED	CHECKED	DATE
						DIS-T-00005086	TS. SHIMIZU	YH. MAMADA	20190827
APPROVED : HK. UMEHARA		20181003	DRAWING NO.		EDC-377226-00-00				
CHECKED : AH. EDASHIGE		20181003	PART NO.		HVH-280-2/2P-HU(A)				
DESIGNED : TS. SHIMIZU		20181003	CODE NO.		CL778-0510-0-00				
DRAWN : GYEONGMIN LEE		20181003							