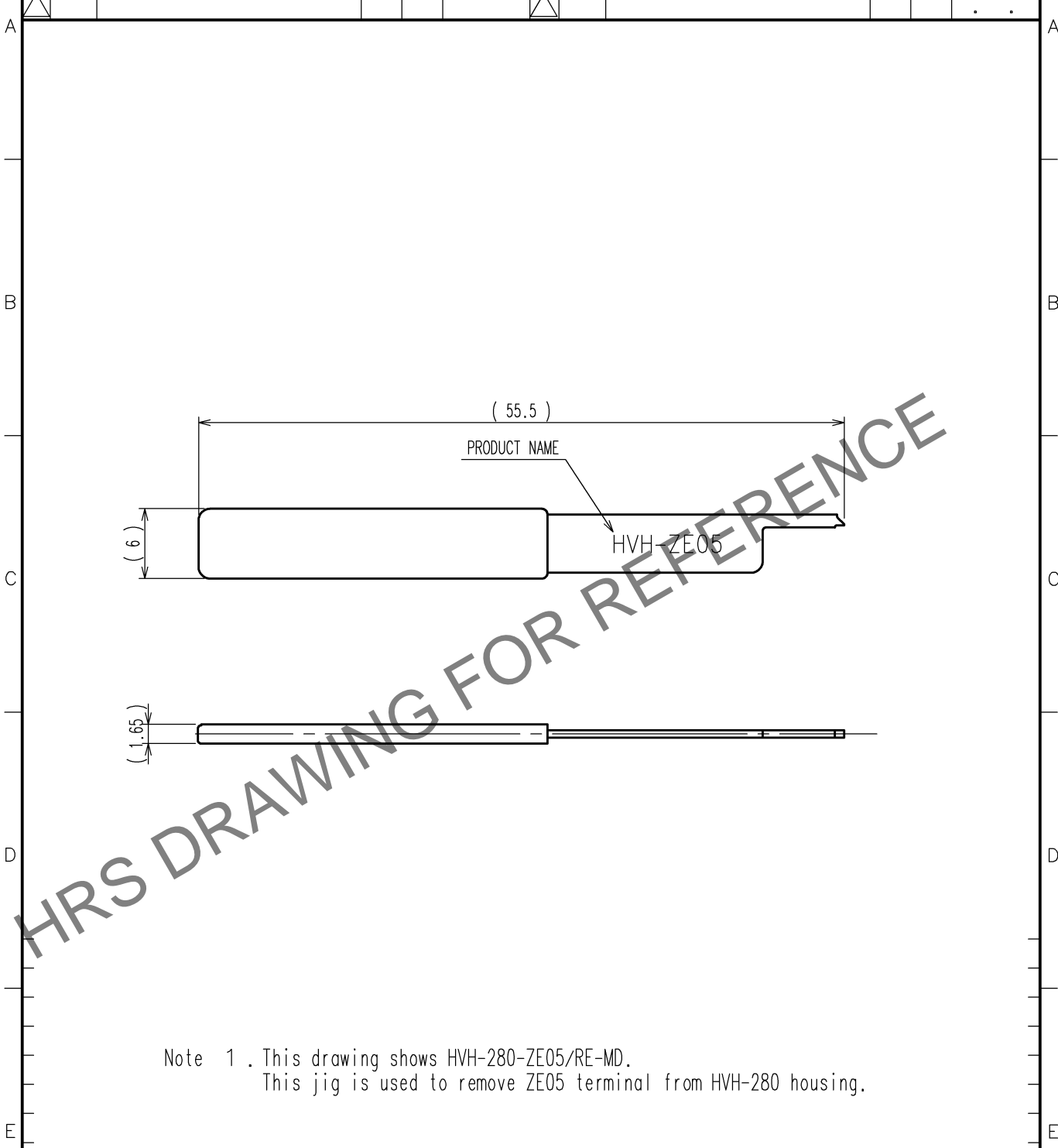


May.1.2024 Copyright 2024 HIROSE ELECTRIC CO., LTD. All Rights Reserved.
In case of consideration for using Automotive equipment / device which demand high reliability, kindly contact our sales window correspondents.



Note 1 . This drawing shows HVH-280-ZE05/RE-MD.
This jig is used to remove ZE05 terminal from HVH-280 housing.

2			4		
1			3		
NO.	MATERIAL	FINISH, REMARKS	NO.	MATERIAL	FINISH, REMARKS
CODE NO. (OLD) CL ?			DRAWN	DESIGNED	CHECKED
			M. TAKAHASHI 19. 5.17	M. TAKAHASHI 19. 5.17	H. YANAGISAWA 19. 5.20
			T. ARAKAWA 19. 5.17		
DRAWING NO. EDC4-285398			PART NO. HVH-280-ZE05/RE-MD		
SACLE 2 : 1			CODE NO. CL902-5158-0		
UNITS mm			1/1		

TO
PE