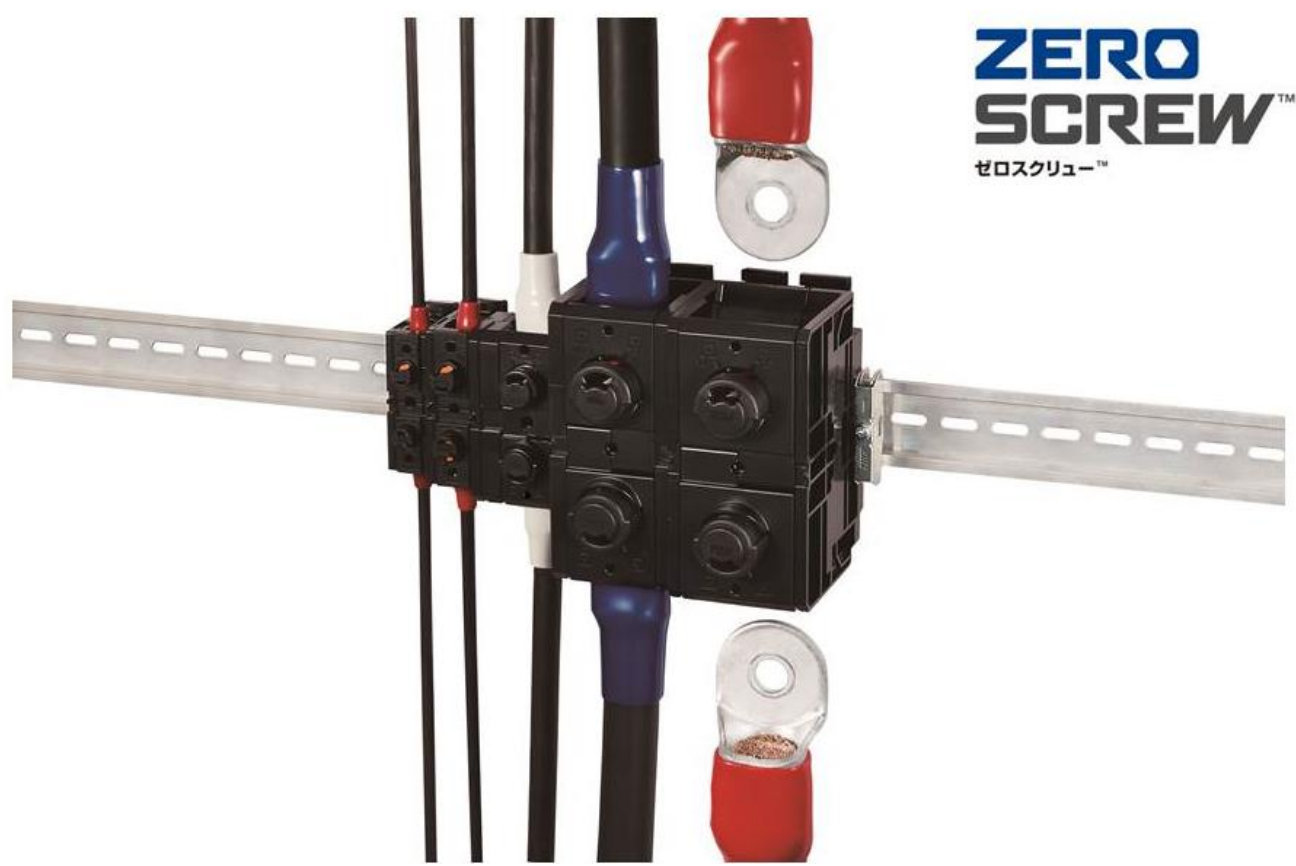


TITLE: EF2 Series Guideline		REVISION DATE: 21-Sep-18 Rev No. 0
OBJECT PRODUCT: EF2 SERIES	Figure No. ETAD-C0387-00	PAGE: 1 OF 25

EF2 Series

Guideline for Design and Handling



Revision history			
Revision	Date	Handled by	Comments
0	2018/06/26	H. Zemba	First version

TITLE: EF2 Series Guideline		REVISION DATE: 21-Sep-18 Rev No. 0
OBJECT PRODUCT: EF2 SERIES	Figure No. ETAD-C0387-00	PAGE: 2 OF 25

Number	Page
1. Introduction	3
1.1 Purpose of Hirose's guideline.....	3
2. Precautions	3
3. Product Number Structure and Outer Dimensions.....	4
3.1 Product Number Structure	4
3.2 Outer dimensions	5
4. Materials and Characteristics of Product	7
4.1 Series specification matrix	7
4.2 Specifications of applicable cables	8
5. Usage and Precautions.....	8
5.1 Applicable crimp contact (Contact with different thickness is not allowed)	8
5.2 Crimp work procedure.....	10
5.3 Product operation	11
5.4 Support for linkage (Description of method for each product)	17
5.5 Mounting and removing to and from DIN rail.....	19
5.6 Bending radius for each cable (bending radius which allows routing)	22
5.7 Strength against prying of cable	23
5.8 Nameplate.....	24
5.9 Applicable probe and usage.....	24
6. Connecting Tools.....	25
6.1 Recommended crimping tools	25

TITLE: EF2 Series Guideline		REVISION DATE: 21-Sep-18 Rev No. 0
OBJECT PRODUCT: EF2 SERIES	Figure No. ETAD-C0387-00	PAGE: 3 OF 25

1. Introduction

1.1 Purpose of Hirose's guideline

Before using ZERO SCREW™ Terminal Block (EF2 Series), refer to the following guideline describing precautions on equipment design and work. Note that photos and illustrations in this document refer to our representative product and differ depending on the product.

The guideline information is subject to change.

2. Precautions

To use the product correctly, read the following **Prohibitions/Cautions** described in the guideline before use.

■ Meanings of prohibitions and cautions

Prohibition	Indicates actions that must not be performed because incorrect handling may immediately result in death or serious injury to the user.
Caution	Indicates incorrect handling that may result in property damage.

Be sure to observe the following Prohibitions/Cautions.

Prohibitions

- Always turn off the power before using the product. Failure to do so may result in an electric shock or damage.
- Do not touch the metallic parts. Touching the metallic parts this may result in an electric shock.
- Do not use the product at power-supply voltage and currents exceeding the rating. This may result in a fire or an electric shock.
- Do not use terminals other than the specified ones. Doing so may result in a contact failure or ignition.
- As for crimp contacts, keep the insulating distance with insulating tubes so that live parts are not exposed in order to prevent an electric shock or a short circuit.
- Do not use crimp contacts that are deformed or largely scratched. Using unsuitable crimp contacts may result in a contact failure or an ignition.

Cautions

- When using a crimp contact that was previously used for the terminal block, check it for deformations and large scratches before use. Do not use a crimp contact with deformations or large scratches.
Replace it with a new crimp contact before use.
- Do not expose the product to vibrations or shocks exceeding the product specifications.
- Do not use our products outdoors because they are designed for indoor applications.

TITLE: EF2 Series Guideline		REVISION DATE: 21-Sep-18 Rev No. 0
OBJECT PRODUCT: EF2 SERIES	Figure No. ETAD-C0387-00	PAGE: 4 OF 25

- Remove the edge of the DIN rail end face. Not doing so will cause difficulty in mounting the product because it gets caught on the edge.
- Do not store or use our products under conditions with corrosive materials that may cause the physical deterioration of plastic and metal rust.
- If solvent is applied to the product by necessity for improved insulation strength or protection, check that it will not cause physical deterioration of the plastic before use.
- Salt damage countermeasures are not implemented for our products.
- Use the specified crimp contacts and check them for deformations and contamination, including oil and contact resistance failure, before use.
- Use the tinned crimp contacts. Check them for abnormalities in inserting/removing force and contact resistance before use.
- Do not store or use our products in a place close to the sea or under conditions of salt exposure. If metal rust or significant discoloration is found, replace it with a new one.
- Store and use our products at an altitude of 2000 m or less and within the operating temperature range, operating humidity range, and storage temperature range described in this catalog store and use products so that no freezing or condensation occurs.

3. Product Number Structure and Outer Dimensions

3.1 Product Number Structure

Refer to the chart below when determining the product specifications from the product number.
Please select from the product numbers listed in this catalog when placing orders.

EF2 - D 150 - 1 (0 1)
① ② ③ ④ ⑤

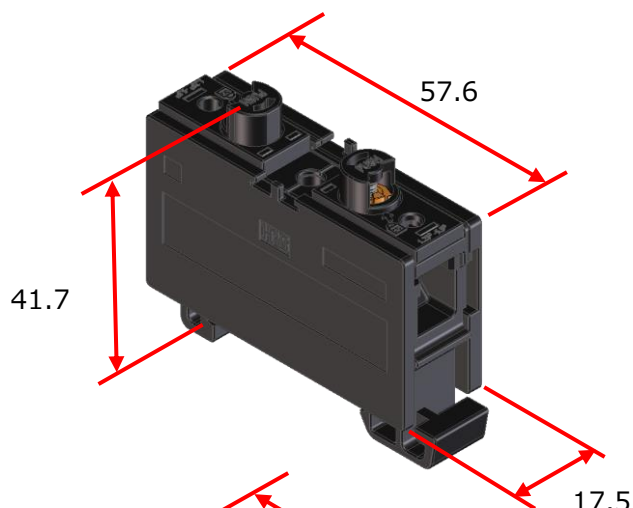
① Series name	EF2
② Mount type	D = DIN rail mount
③ Current capacity sign	30, 60, 150, 250, 400
④ Linked quantity	(D150 type only)
⑤ Other specifications	Additional product specifications will be identified by the addition of (01), (02), etc., as needed.

TITLE: EF2 Series Guideline		REVISION DATE: 21-Sep-18 Rev No. 0
OBJECT PRODUCT: EF2 SERIES	Figure No. ETAD-C0387-00	PAGE: 5 OF 25

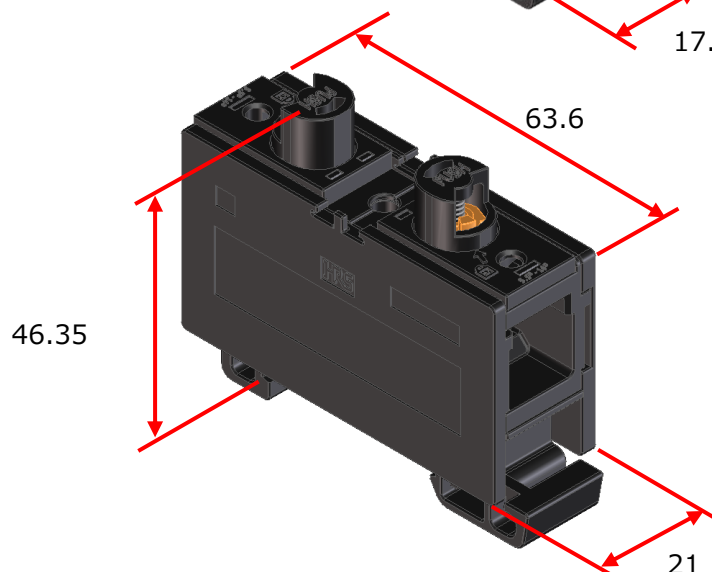
3.2 Outer dimensions

- Caution:
- All height dimensions shall be measured from the DIN rail.
 - Width dimensions in linkage are based on Section 5.5.1: Width dimension in connecting housing.

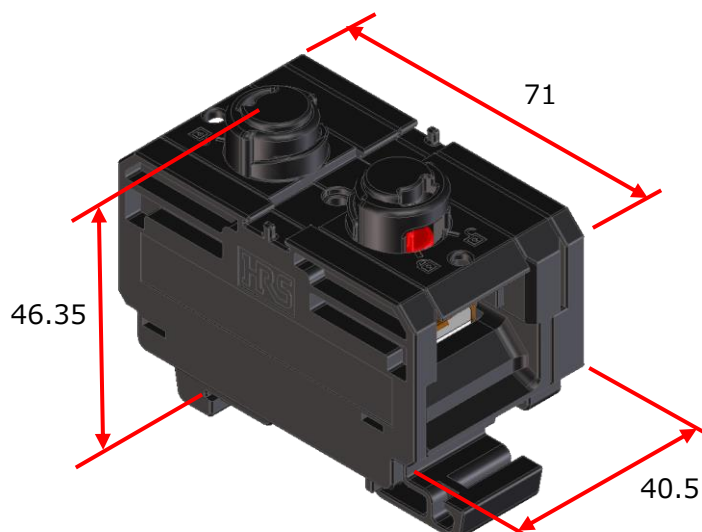
EF2-D30-1



EF2-D60-1

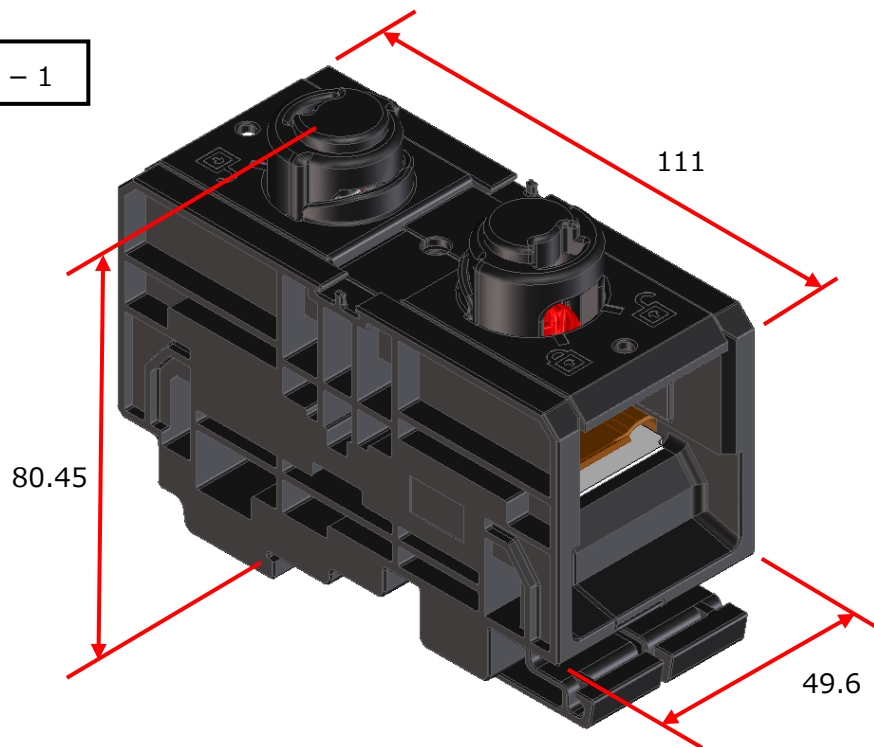


EF2-D150-1

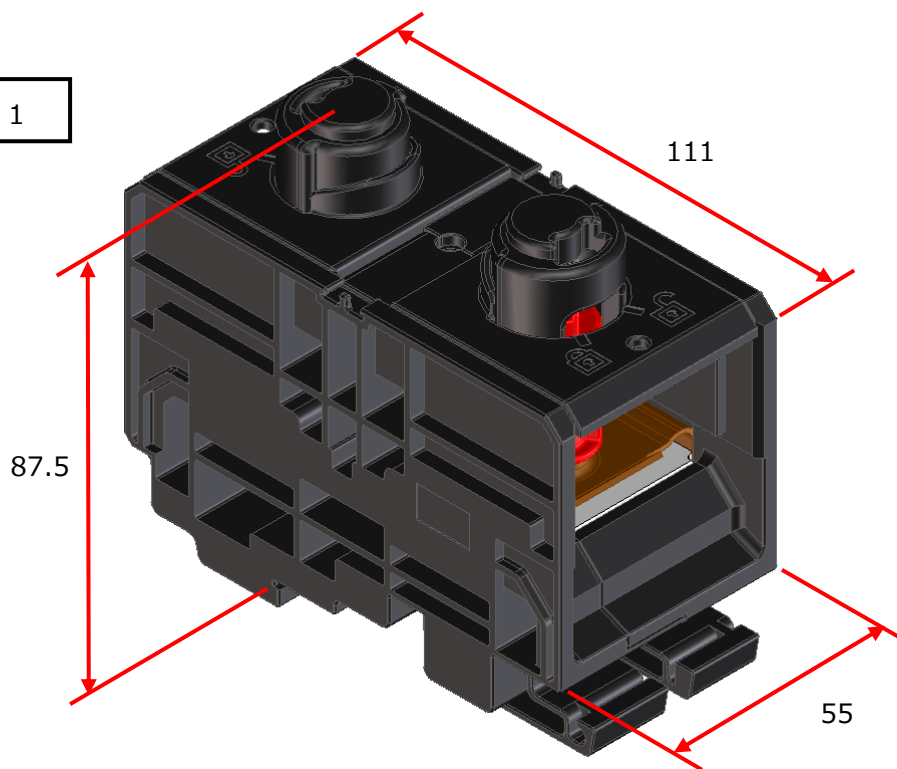


TITLE: EF2 Series Guideline		REVISION DATE: 21-Sep-18 Rev No. 0
OBJECT PRODUCT: EF2 SERIES	Figure No. ETAD-C0387-00	PAGE: 6 OF 25

EF2-D250-1



EF2-D400-1



TITLE: EF2 Series Guideline		REVISION DATE: 21-Sep-18 Rev No. 0
OBJECT PRODUCT: EF2 SERIES	Figure No. ETAD-C0387-00	PAGE: 7 OF 25

4. Materials and Characteristics of Product

4.1 Series specification matrix

•Materials / Finish

Component	Materials	Finish
Housing	m-PPE	UL94V-0, Black
Lock	PBT	UL94V-0, Black/Red/Orange
Bus bar	Copper	Tin plated
Spring	SUS	—

•Characteristics

	Product	D30	D60	D150	D250	D400
Rated current	Applicable cable	1.25mm ² =16A 2mm ² =21A 3.5mm ² =30A 5.5mm ² =40A	5.5mm ² =40A 8mm ² =50A 14mm ² =70A	22mm ² =94A 38mm ² =132A 60mm ² =175A	150mm ² =310A	200mm ² =400A
Rated voltage		600 V AC/DC			1000 V AC,1500 V DC	
Withstanding voltage		2500 AC per 1 minute			5000 V AC per 1 minute	
Contact resistance		1 mΩ max. (1A DC)		0.1 mΩ max. (1A DC)		
Operating temperature		-25°C to +105°C [*]				
Storage temperature		-10°C to +60°C				
Insulation resistance		1000 MΩ min. (500 V DC)				
Durability		50 times				

*: Including the temperature rising by current flow.

TITLE: EF2 Series Guideline		REVISION DATE: 21-Sep-18 Rev No. 0
OBJECT PRODUCT: EF2 SERIES	Figure No. ETAD-C0387-00	PAGE: 8 OF 25

4.2 Specifications of applicable cables

Current capacity sign	Applicable cable size (mm ²)			
30	1.25	2	3.5	5.5
60	5.5	8	14	-
150	22	38	60	-
250	150	-	-	-
400	200	-	-	-

5. Usage and Precautions

5.1 Applicable crimp contact (Contact with different thickness is not allowed)

Select the applicable crimp contact by referring to Table 1: Part numbers of recommended crimp contacts and Table 2: Dimensions of applicable crimp contacts.
Also, refer to the List of enabled/disabled of crimp contacts.

Table 1 Part numbers of recommended crimp contacts

Current capacity sign	Crimp contact manufacturer	Part numbers of crimp contacts					
30	JST	R1.25-5	R2-5	3.5-R4	R5.5-4	—	—
	Nichifu	R1.25-5	R2-5	R3.5-4	R5.5-4	—	—
60	JST	R5.5-5	R8-5	R14-5	—	—	—
	Nichifu	R5.5-5	R8-5	R14-5	—	—	—
150	JST	R22-8	R22-10	R38-8	R38-10	R60-8	R60-10
	Nichifu	R22-8	R22-10	R38-8	R38-10	R60-8	R60-10
250	JST	R150-12	R150-14	—	—	—	—
	Nichifu	R150-12	R150-14	—	—	—	—
400	JST	R200-12	R200-14	—	—	—	—
	Nichifu	R200-12S	R200-14	—	—	—	—

Prohibition: Using a crimp contact with a different size will cause a poor fit and insufficient contact.

TITLE: EF2 Series Guideline		REVISION DATE: 21-Sep-18 Rev No. 0
OBJECT PRODUCT: EF2 SERIES	Figure No. ETAD-C0387-00	PAGE: 9 OF 25

Figure 1 Dimensions of applicable crimp contacts

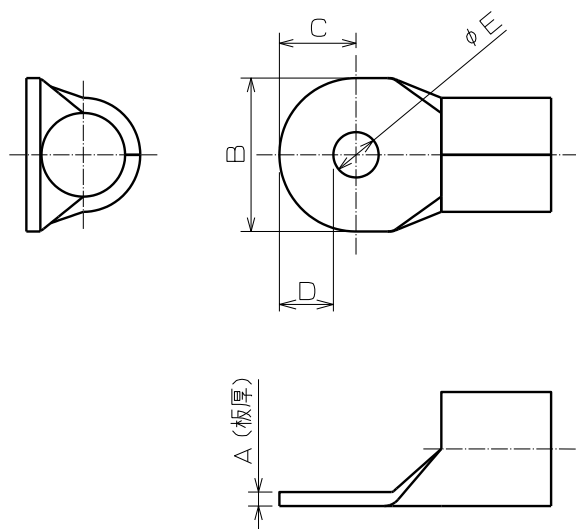


Table 2 Dimensions of applicable crimp contacts [mm]

Current capacity sign	A	B	C	D	E
30	1 +0.05/-0.3	9.5 or less	-	2.6 or less	4.3 or more
60	1.5 +0.1/-0.8	12.2 or less	-	3.35 or less	5.3 or more
150	1.8 +0.3/-0.1	24.3 or less	-	7 or less	8.4 or more
250	3.2 +0.4/-0.1	42 or less	18±0.2	-	13 or more
400	4±0.1	48 or less	22±0.2	-	13 or more

Caution: Select the crimp contact that meets all dimensions shown above.

If one of the dimensions is not met lock or sufficient contact cannot be achieved.

Table 3 List of enabled/disabled of crimp contacts

Current capacity sign	R1.25	R2	R3.5	R5.5	R8	R14	R22	R38	R60	R150	R200
30	○	○	○	○	×	×	×	×	×	×	×
60	×	×	×	○	○	○	×	×	×	×	×
150	×	×	×	×	×	×	○	○	○	×	×
250	×	×	×	×	×	×	×	×	×	○	×
400	×	×	×	×	×	×	×	×	×	×	○

Caution: - ○: Enabled crimp contact, ×: Disabled crimp contact

- Using an inappropriate crimp contact may result in contact failure or ignition.

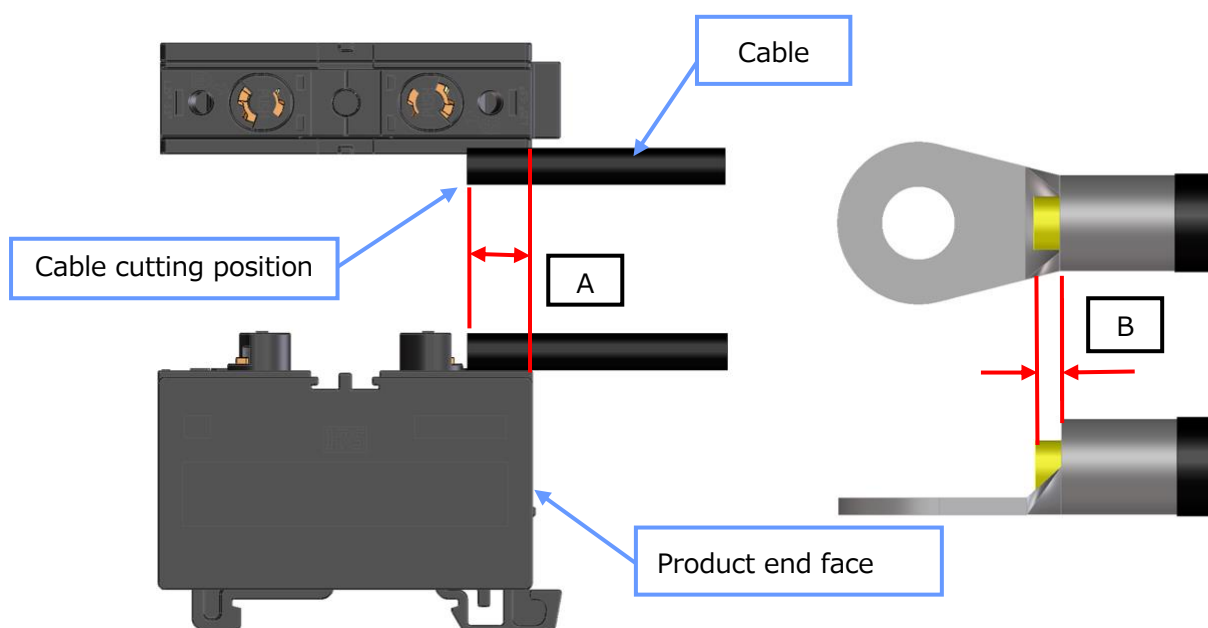
TITLE: EF2 Series Guideline		REVISION DATE: 21-Sep-18 Rev No. 0
OBJECT PRODUCT: EF2 SERIES	Figure No. ETAD-C0387-00	PAGE: 10 OF 25

5.2 Crimp work procedure

Setting of cable cutting length and protrusion length from crimp contact [mm]

Current capacity sign	Crimp contact size	A	B
30	R1.25	11±1	1 ⁰ _{-0.5}
	R2	11±1	1 ⁰ _{-0.5}
	R3.5	10±1	1 ⁺¹ _{-0.5}
	R5.5	10±1	1 ⁺¹ _{-0.5}
60	R5.5	11±1	1 ⁰ _{-0.5}
	R8	10±1	1 ⁺¹ _{-0.5}
	R14	8±2	2±1
150	R22	10.5±2	2±1
	R38	8±2	3±2
	R60	6±2	4±2
250	R150	15.5±2	3±1
400	R200	9±2	4±2

Caution: • A indicates the cable cutting position. Cut the cable at dimension A from the product end face.
 Cutting the cable out of the tolerance range may result in poor fit after crimping the terminal.
 • B is the dimension of the conductor protruding from the crimp contact before crimping.
 Set the ranges specified in the table. Setting a dimension out of tolerance range may result in a poor fit or continuity failure.



TITLE: EF2 Series Guideline		REVISION DATE: 21-Sep-18 Rev No. 0
OBJECT PRODUCT: EF2 SERIES	Figure No. ETAD-C0387-00	PAGE: 11 OF 25

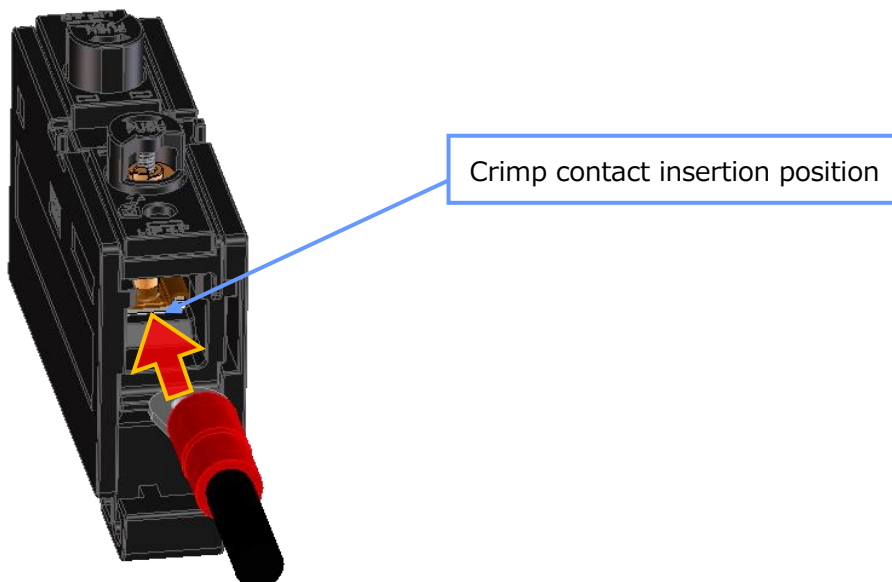
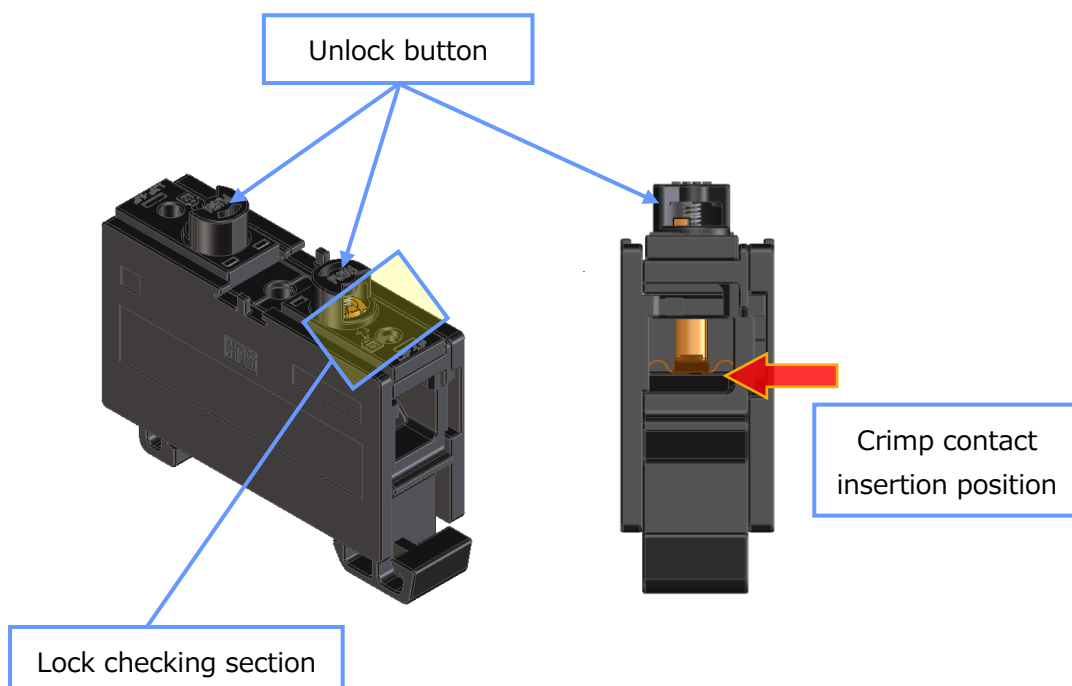
5.3 Product operation

5.3.1 EF2-D30, D60

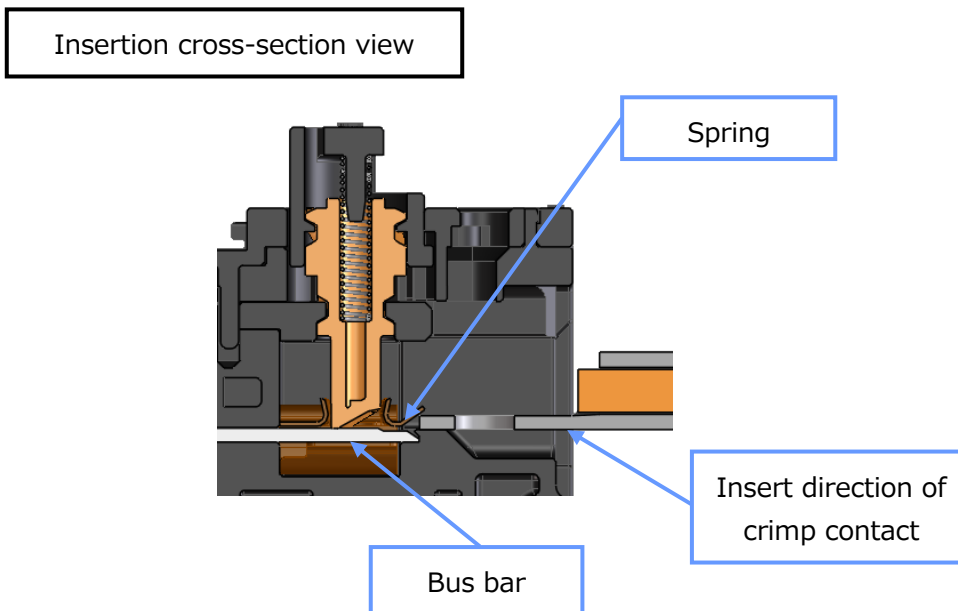
5.3.1.1 Inserting crimp contact

Insert the applicable crimp contact into the crimp contact insertion position (between the spring and the bus bar) shown in the figure below.

For the crimp contact insertion position, refer to the insertion cross-section view on the next page.




TITLE: EF2 Series Guideline		REVISION DATE: 21-Sep-18 Rev No. 0
OBJECT PRODUCT: EF2 SERIES	Figure No. ETAD-C0387-00	PAGE: 12 OF 25



- Caution:
- The insert direction of the crimp contact is the position shown in the figure above. If the contact can fit 180° in the opposite direction, the product can be used with the contact in this position.
 - At this point, check that the product is in the locked state as described in Section 5.3.1.2.
- Prohibition:
- Do not insert the crimp contact into a position other than the insertion position. Inserting the crimp contact incorrectly will not provide a fitting lock even if the contact is inserted. Furthermore, the product may be damaged.

TITLE: EF2 Series Guideline		REVISION DATE: 21-Sep-18 Rev No. 0
OBJECT PRODUCT: EF2 SERIES	Figure No. ETAD-C0387-00	PAGE: 13 OF 25

5.3.1.2 Locked state

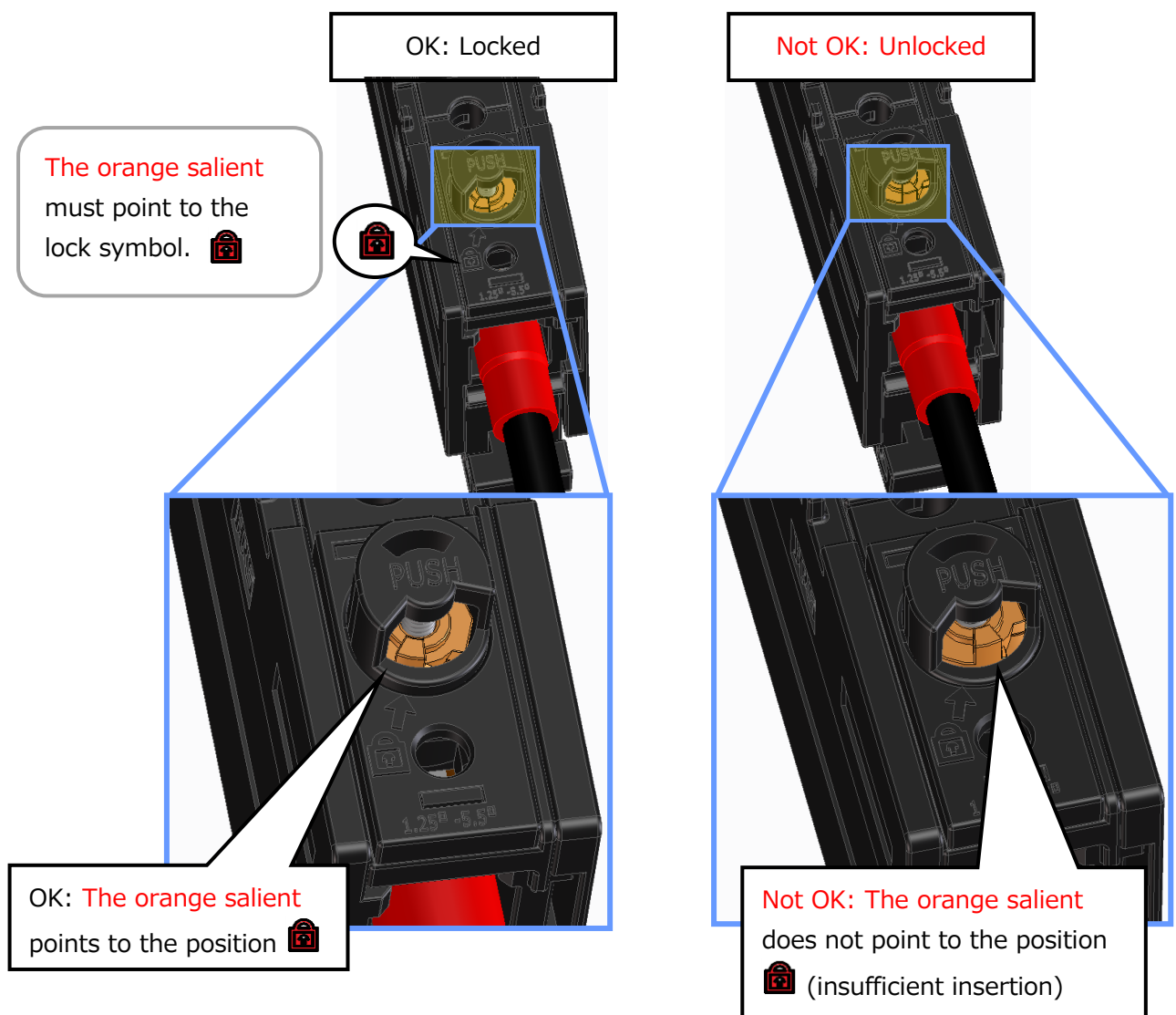
The locked state is a state in which the orange salient points to the symbol  as shown in the figure below.

After changing the product into the locked state, make sure that the crimp contact is not disconnected even if the cable is pulled.

If the crimp contact is disconnected, the insertion is not sufficient.

Using the product in this state may result in contact failure or ignition.

Insert the crimp contact again and be sure to lock it.

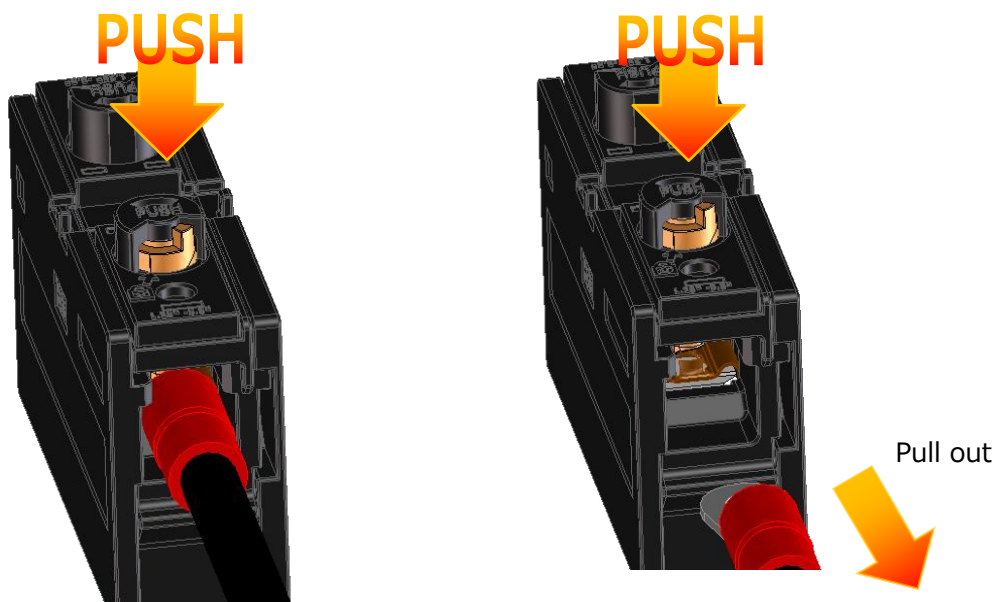


- Prohibition:
- Avoid leaving the product in the unlocked position.
Failure to follow this will detach the crimp contact to cause contact failure.
 - If the product is in the unlocked state, fit the crimp contact into the locked state again.

TITLE: EF2 Series Guideline		REVISION DATE: 21-Sep-18 Rev No. 0
OBJECT PRODUCT: EF2 SERIES	Figure No. ETAD-C0387-00	PAGE: 14 OF 25

5.3.1.3 Unlock

Unlock is performed by pulling out the crimp contact or cable while pressing the unlock button.

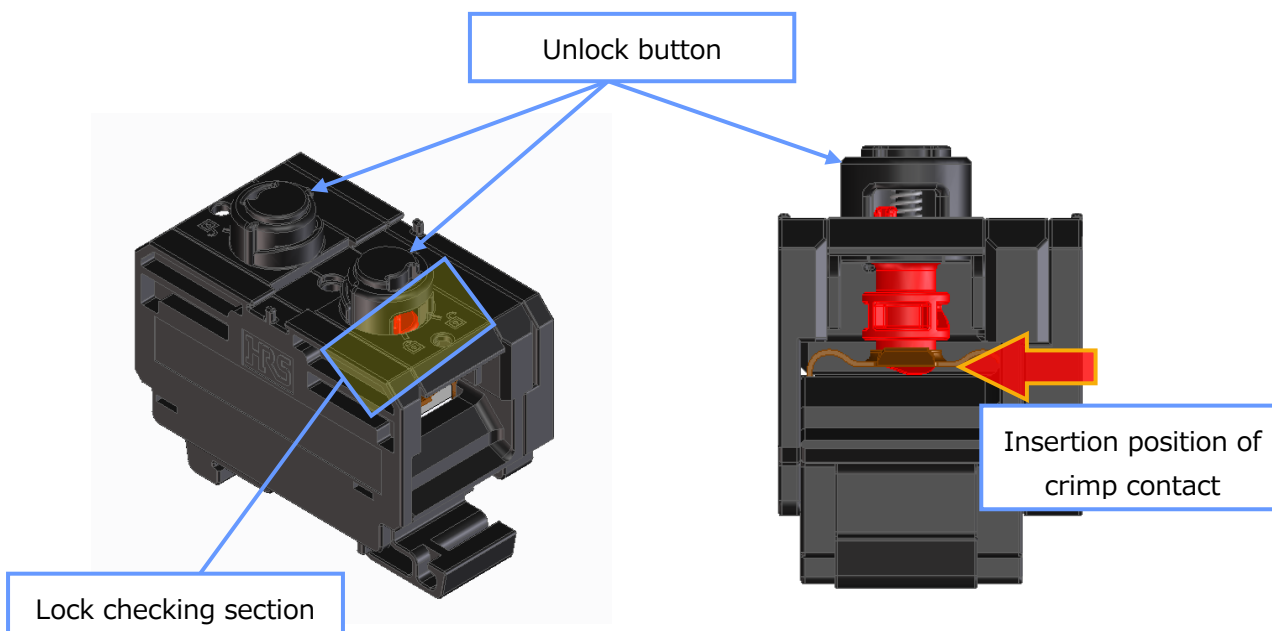


5.3.2 EF2-D150, D250, D400

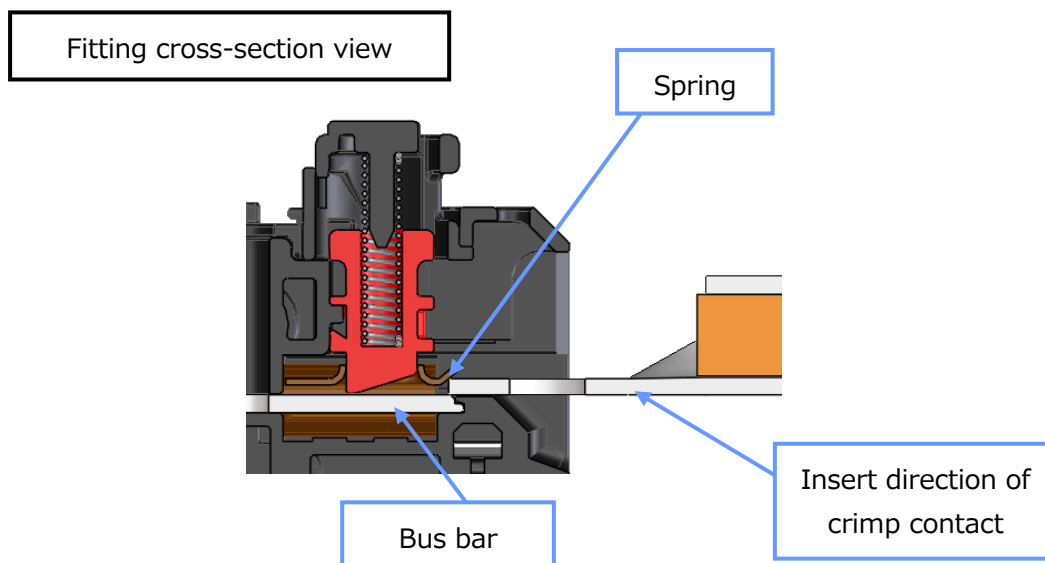
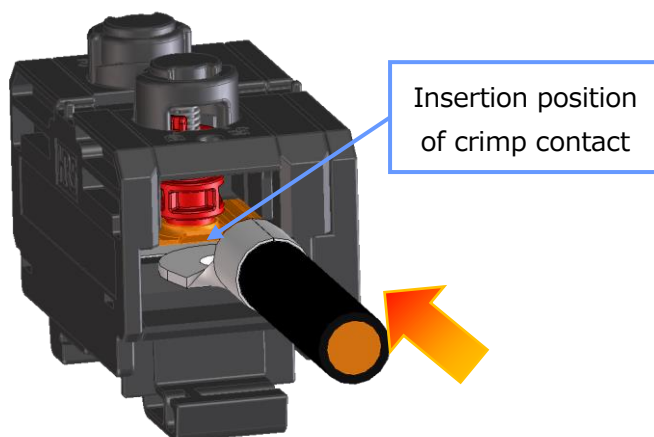
5.3.2.1 Insertion of crimp contact

Insert the applicable crimp contact into the crimp contact insertion position (between the spring and the bus bar) shown in the figure below.

For the crimp contact insertion position, refer to the insertion cross-section view on the next page.




TITLE: EF2 Series Guideline		REVISION DATE: 21-Sep-18 Rev No. 0
OBJECT PRODUCT: EF2 SERIES	Figure No. ETAD-C0387-00	PAGE: 15 OF 25



- Caution:
- The insert direction of the crimp contact is the position shown in the figure. If the contact can fit 180° in the opposite direction, the product can be used with the contact in this position.
 - At this point, check that the product is in the locked state as described in Section 5.3.2.2.
- Prohibition:
- Do not insert the crimp contact into a position other than the insertion position. Inserting the crimp contact incorrectly will not provide a fitting lock even if the contact is inserted. Furthermore, the product may be damaged.

TITLE: EF2 Series Guideline		REVISION DATE: 21-Sep-18 Rev No. 0
OBJECT PRODUCT: EF2 SERIES	Figure No. ETAD-C0387-00	PAGE: 16 OF 25

5.3.2.2 Locked state

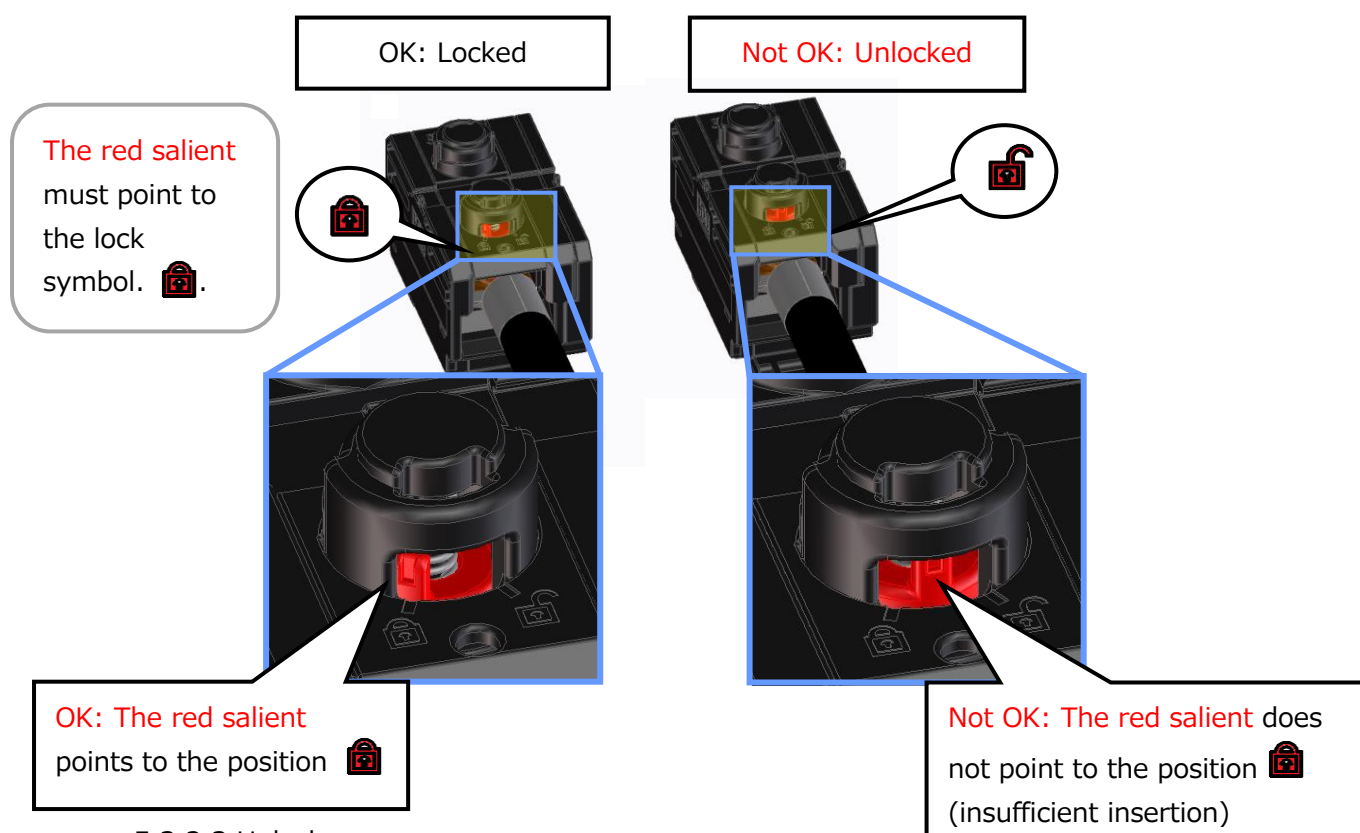
The locked state is a state in which the red salient points to the symbol  as shown in the figure below.

After changing the product into the locked state, ensure that the crimp contact is not disconnected even if the cable is pulled.

If the crimp contact is disconnected, the insertion is not sufficient.

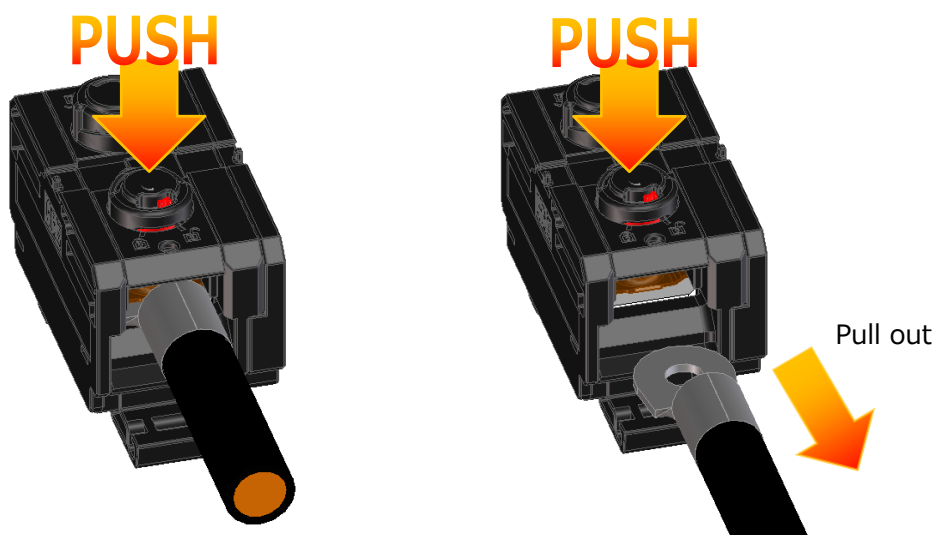
Using the product in this state may result in contact failure or ignition.

Insert the crimp contact again and make sure to lock it.



5.3.2.3 Unlock

Unlock is performed by pulling out the crimp contact or cable while pressing the unlock button.



TITLE: EF2 Series Guideline		REVISION DATE: 21-Sep-18 Rev No. 0
OBJECT PRODUCT: EF2 SERIES	Figure No. ETAD-C0387-00	PAGE: 17 OF 25

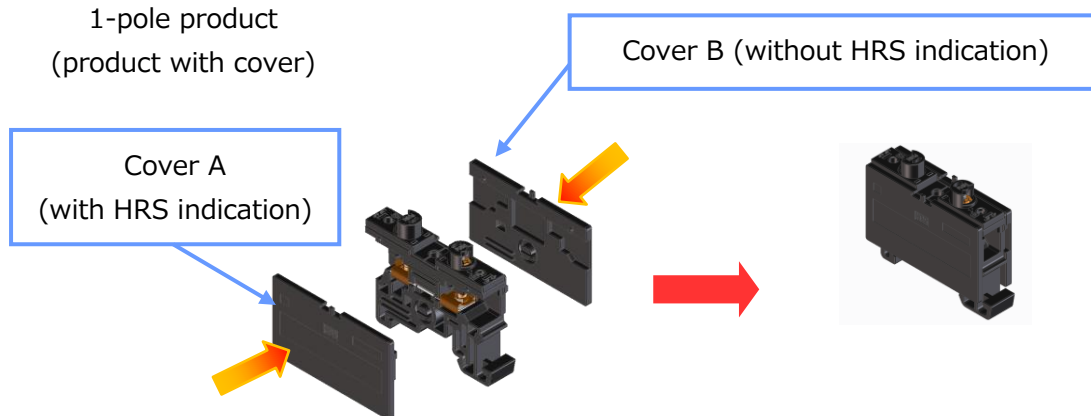
5.4 Support for linkage (Description of method for each product)

5.4.1 The method for linking each product is described.

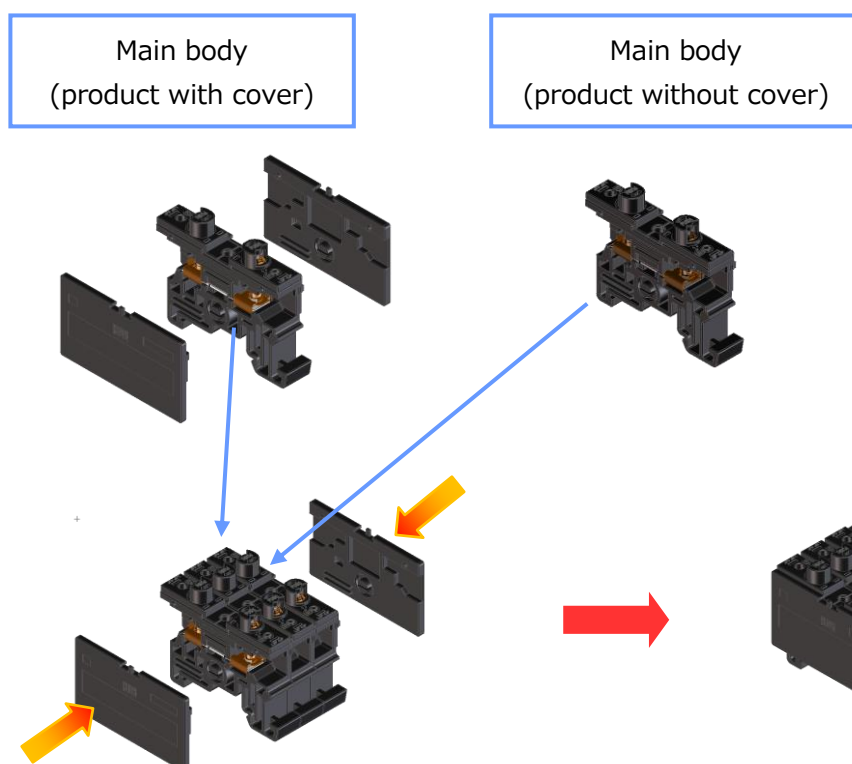
D30、D60

Combination of the product with a cover and the product without a cover creates a multi-pole product. (To be handled by the customer)

1-pole product
(product with cover)



Multipole product

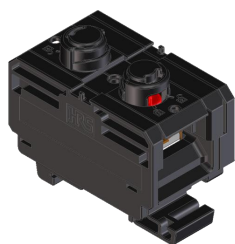


TITLE: EF2 Series Guideline		REVISION DATE: 21-Sep-18 Rev No. 0
OBJECT PRODUCT: EF2 SERIES	Figure No. ETAD-C0387-00	PAGE: 18 OF 25

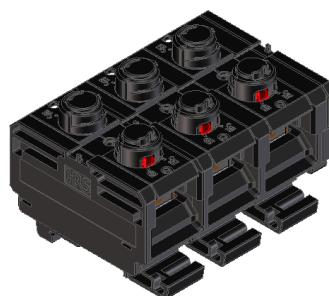
D150

We provide an assembly with a maximum of 5 poles.
Therefore this product cannot be disassembled.

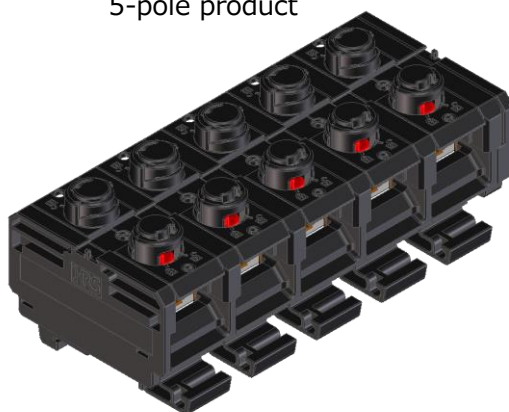
1-pole product



3-pole product



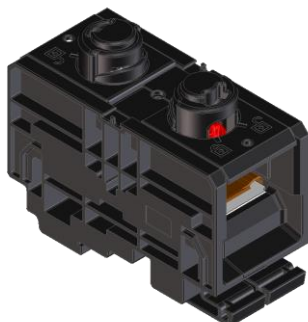
5-pole product



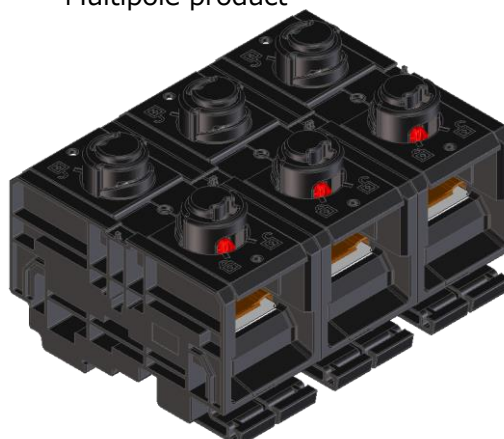
D250, D400

Use 1-pole products as arranged. Respective products are not linked to each other.

1-pole product



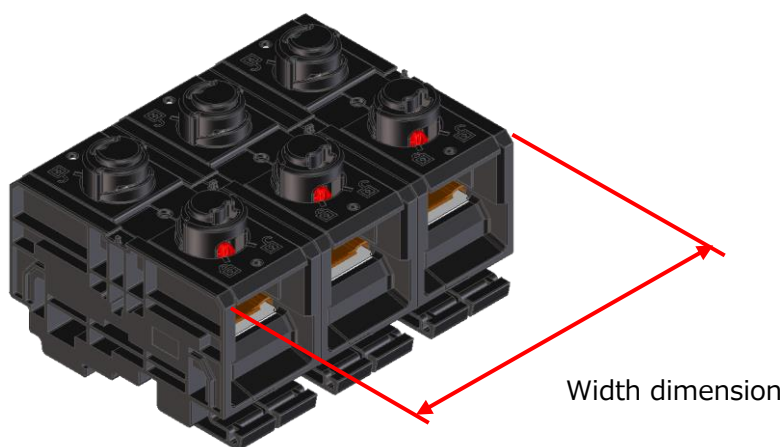
Multipole product



5.4.2 Width dimension in linkage

[mm]

Current capacity sign	1 unit	2 units	3 units	n units
30	17.50	29.55	41.60	$5.45 + 12.05 \times n$
60	21.00	36.55	52.10	$5.45 + 15.55 \times n$
150	40.50	70.00	99.50	$40.5 + 29.5 \times (n-1)$
250	49.60	99.20	148.80	$49.6 \times n$
400	55.00	110.00	165.00	$55 \times n$



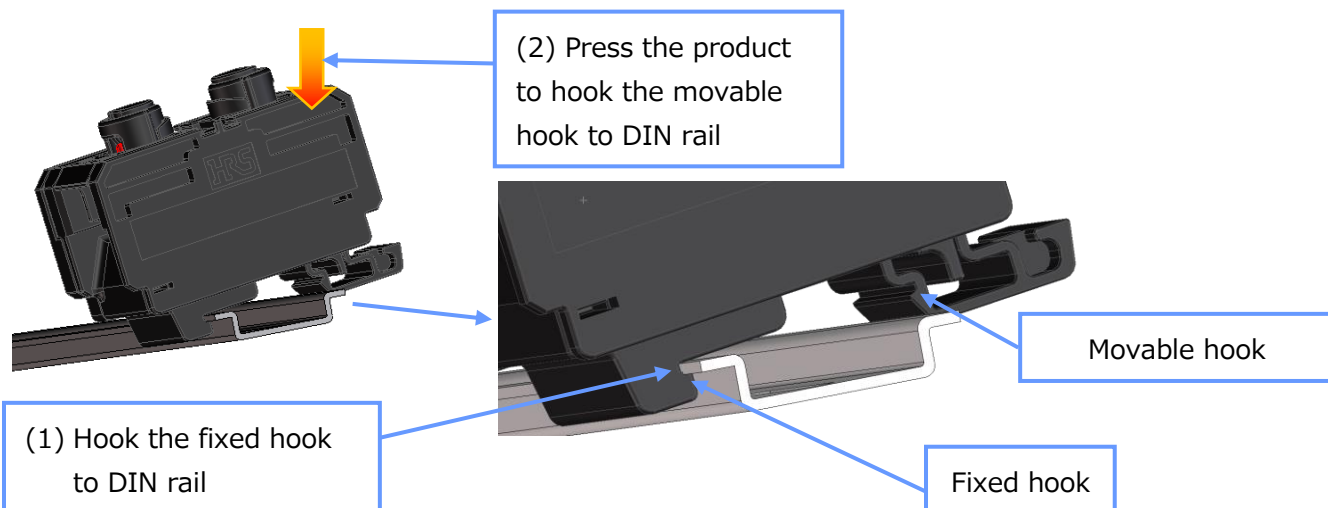
5.5 Mounting and removing to and from DIN rail

5.5.1 Basic mounting method

As shown in the figure below with the fixed hook hooked to the DIN rail, press the product until the movable hook is hooked to the DIN rail.

Do not use a deformed DIN rail as doing so may damage the product.

Applicable DIN rail: JIS C 2812 top hat type 35-7.5

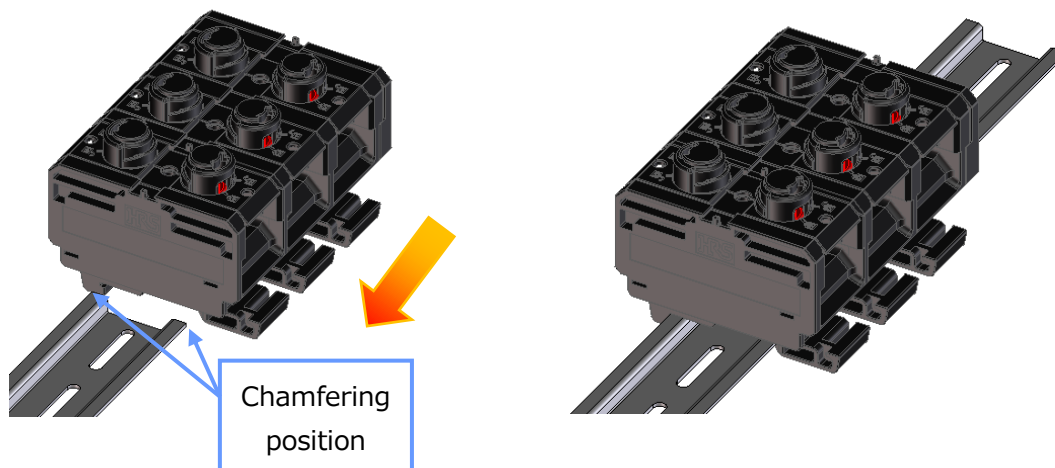


TITLE: EF2 Series Guideline		REVISION DATE: 21-Sep-18 Rev No. 0
OBJECT PRODUCT: EF2 SERIES	Figure No. ETAD-C0387-00	PAGE: 20 OF 25

5.5.2 When the mounting described in 5.5.1 is difficult:

Mount the product by sliding it from the DIN rail end as shown in the figure below.

If it is difficult to fit the product in DIN rail, chamfer the DIN rail.



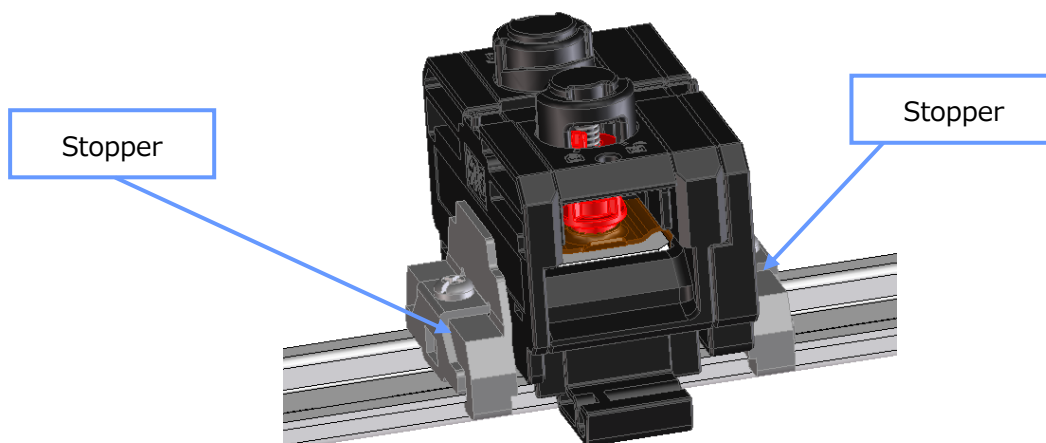
5.5.3 Fixing of product

The mounted product must be fixed with a commercially-available stopper to prevent it from moving along the DIN rail.

The cover easily disengages for products D30 and D60. Hold it with a stopper to prevent disengagement.

Applicable fastener: Use the one complying with applicable DIN rail.

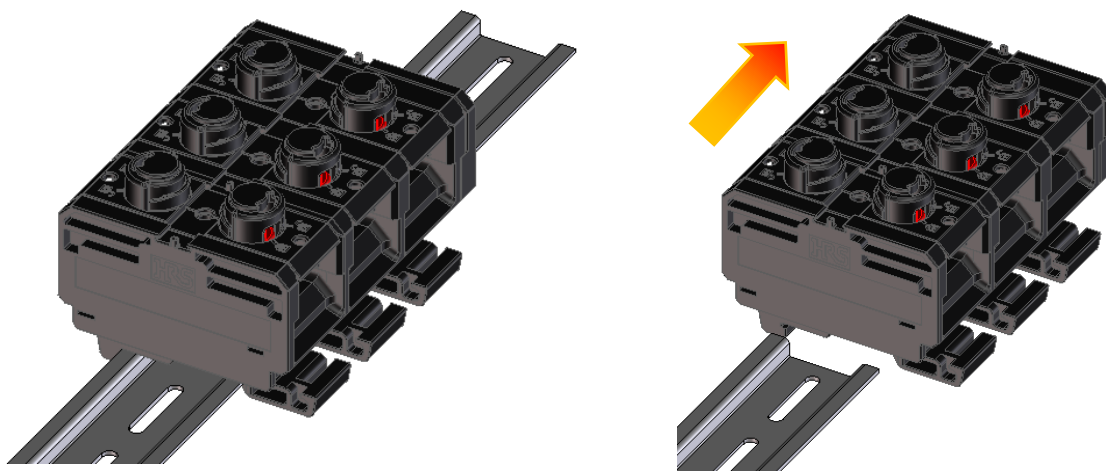
Representative example: HDV-2 made by Toyogiken



TITLE: EF2 Series Guideline		REVISION DATE: 21-Sep-18 Rev No. 0
OBJECT PRODUCT: EF2 SERIES	Figure No. ETAD-C0387-00	PAGE: 21 OF 25

5.5.4 Removing product

Remove the product out of the DIN rail by sliding it as shown in the figure below.
Remove terminals from the product before removing the product.



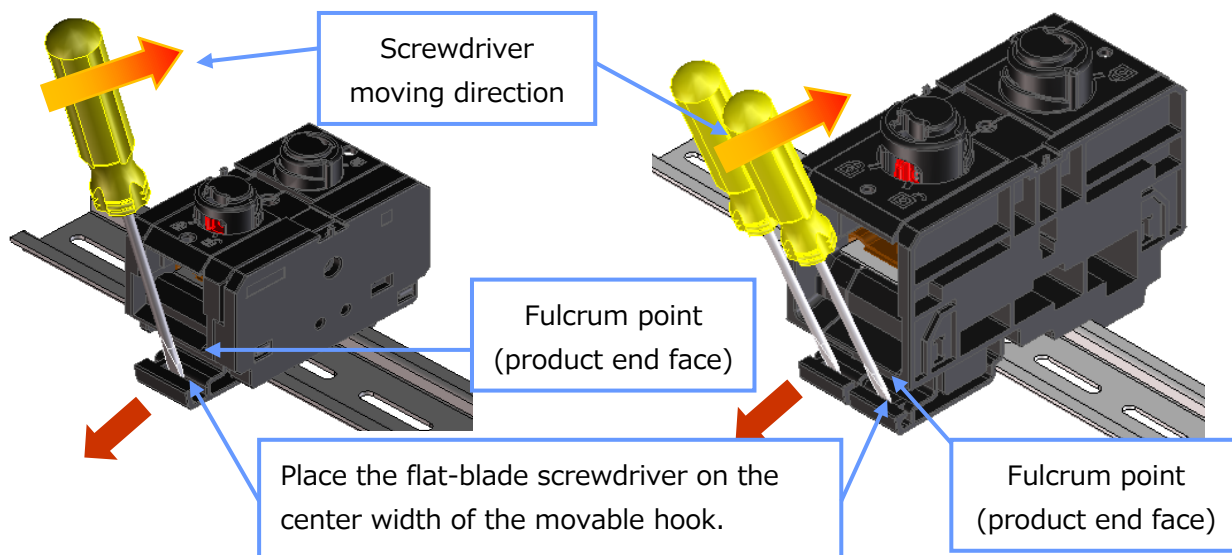
If one unit is used, the product can be removed by placing the tip of a flat-blade screwdriver on the edge of the movable hook side and opening up the movable hook with the product end face set to fulcrum point.

For the D250 and D400 that have two movable hooks, remove the product by opening up the hook using two flat-blade screwdrivers simultaneously.

The position on which the flat-blade screwdriver is placed is the center section of the fixed hook in both cases.

● D30,D60,D150

● D250,D400



TITLE: EF2 Series Guideline		REVISION DATE: 21-Sep-18 Rev No. 0
OBJECT PRODUCT: EF2 SERIES	Figure No. ETAD-C0387-00	PAGE: 22 OF 25

5.5.5 DIN rail and fastener used

Applicable DIN rail: JIS C 2812 top hat type 35-7.5

Applicable fastener: Use the one complying with applicable DIN rail.

Representative example: HDV-2 made by Toyogiken

5.6 Bending radius for each cable (bending radius which allows routing)

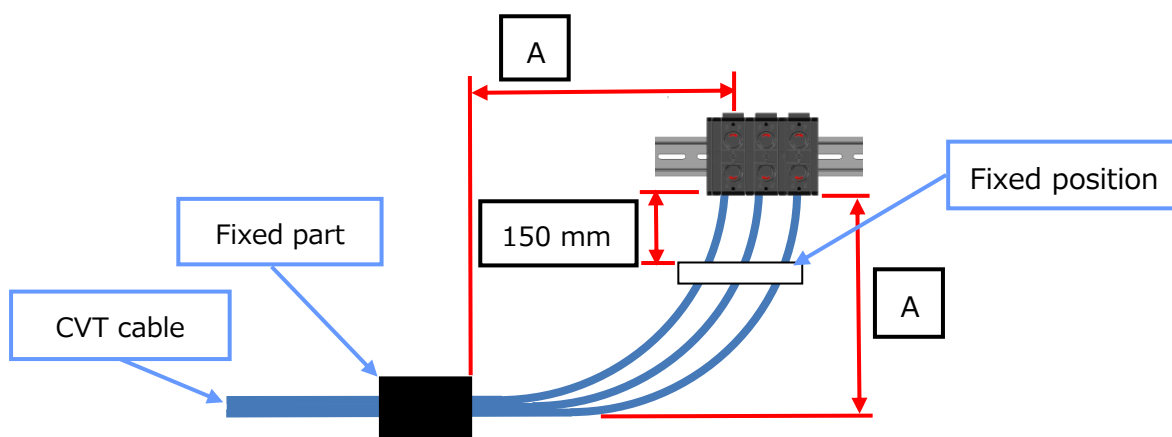
Bending R of cable is based on the table below.

When routing the cable sideways, refer to the bending R in the table below.

In consideration of influence from any vibration on the contact part, attach the cable 150 mm from the connector.

It is necessary to allow for a distance to the fixed part depending on the type of cable. Therefore, check that point when using cables.

Product name	[mm] Dimension A
	Cable size
EF2-D150-1	60 mm ² : 200
EF2-D250-1	150 mm ² : 360
EF2-D400-1	200 mm ² : 410



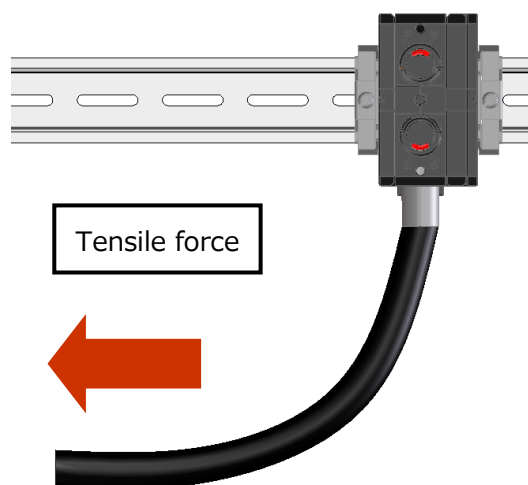
TITLE: EF2 Series Guideline		REVISION DATE: 21-Sep-18 Rev No. 0
OBJECT PRODUCT: EF2 SERIES	Figure No. ETAD-C0387-00	PAGE: 23 OF 25

5.7 Strength against prying of cable

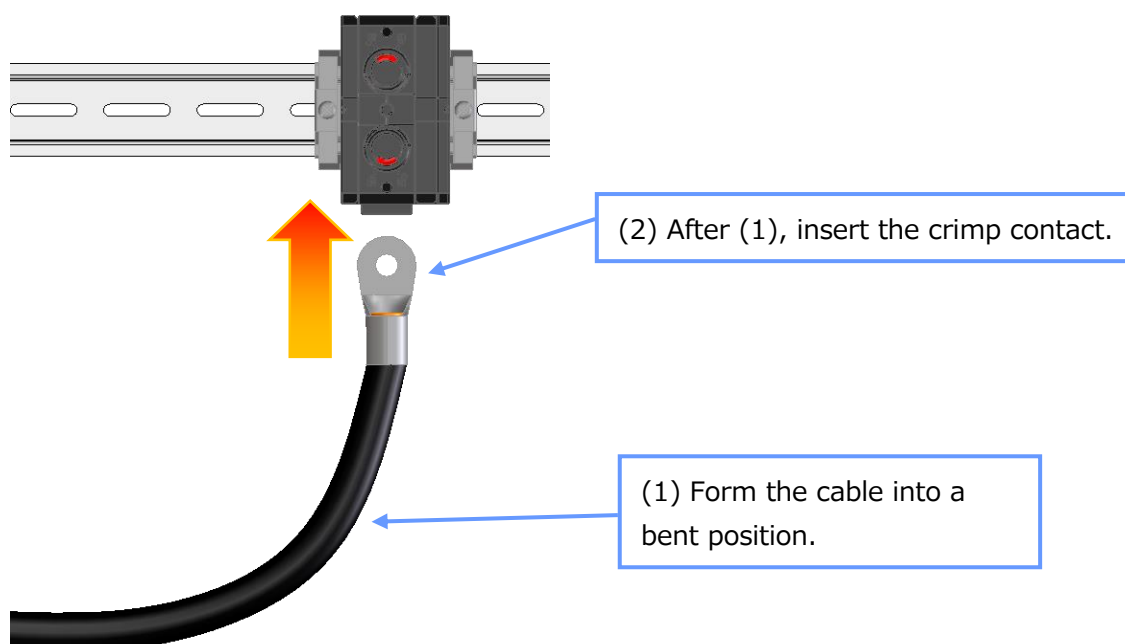
The following table shows strength against prying of the cable.

Note that pulling the cable after the crimp contact is inserted may produce a unexpected load that can damage the connector.

To prevent the connector from undergoing such a load, form the cable into a bent position before inserting the crimp contact.



Applicable cable							
Stranded cable (mm ²)	1.25	2~3.5	5.5~8	14~22	38~60	150	200
Tensile force (N)	50	100	150	200	250	350	350



TITLE: EF2 Series Guideline		REVISION DATE: 21-Sep-18 Rev No. 0
OBJECT PRODUCT: EF2 SERIES	Figure No. ETAD-C0387-00	PAGE: 24 OF 25

5.8 Nameplate

Use a commercially-available product, with a thickness of 0.5 mm and a width of 10 mm.

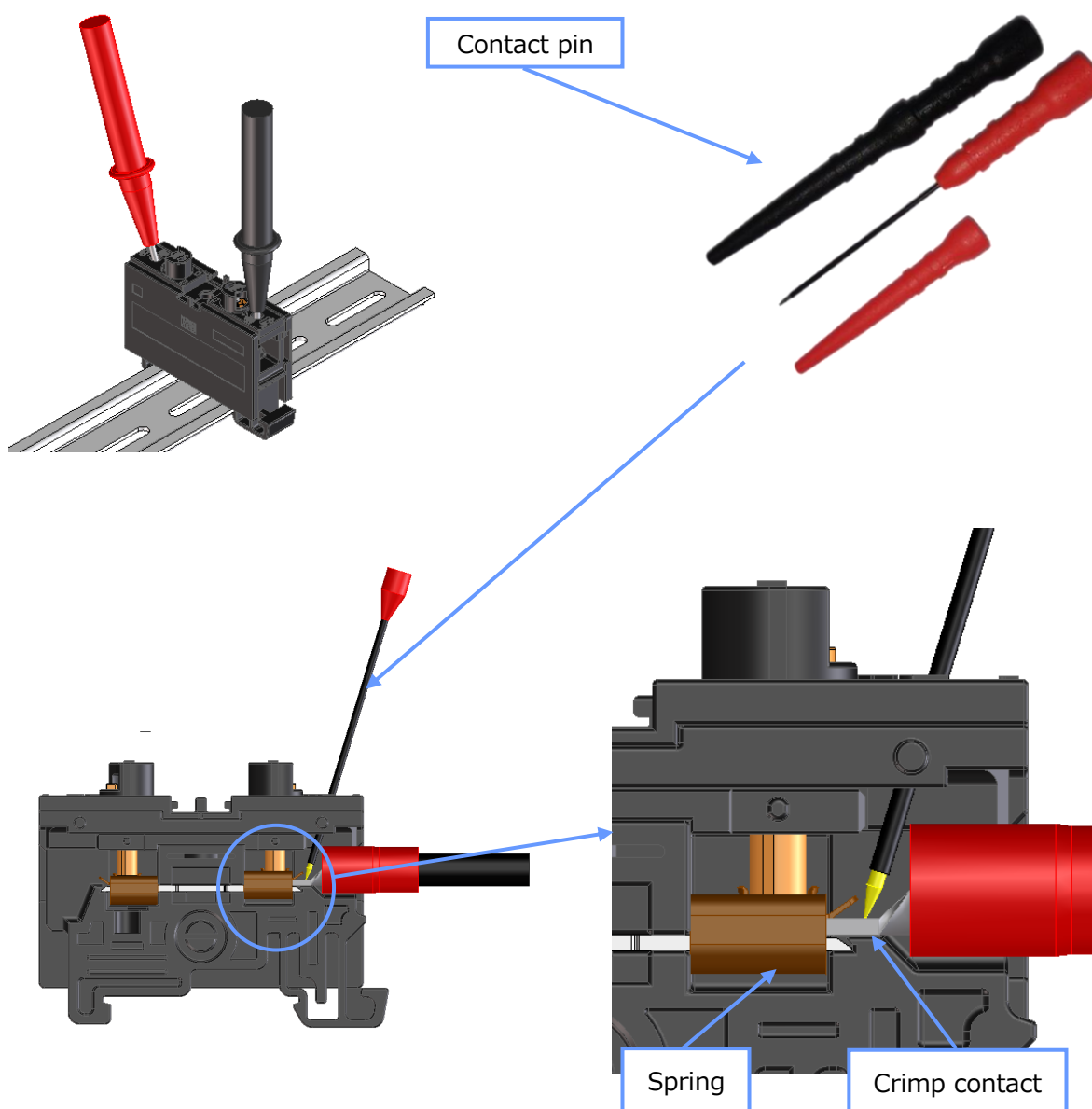
Reference product : AM-10 (Width: 10 mm) from TOYOGIKEN.

5.9 Applicable probe and usage

In voltage measurement, insert a probe through the hole of the cover case and contact it with the crimp contact or the spring.

It is recommended to use the attachment-type contact pin (diameter: 1 mm, length: 48 mm) for the tip of probe.

Example of use: Test lead L9207-10 (made by Hioki) + Contact pin L 4933 (made by Hioki)



TITLE: EF2 Series Guideline		REVISION DATE: 21-Sep-18 Rev No. 0
OBJECT PRODUCT: EF2 SERIES	Figure No. ETAD-C0387-00	PAGE: 25 OF 25

6. Connecting Tools

6.1 Recommended crimping tools

- When crimping a crimp contact, use the tool applicable to each crimp contact.
- Perform maintenance on the crimp contact to assure the crimp quality.

The following table shows examples of recommended crimping tools.

Recommended crimping tool	Applicable cable size (mm ²)	Remarks
5N18 made by IZUMI Product Company	1.25, 2, 3.5 (die mark 5.5), 5.5, 8	Manual
REC-Li14S made by IZUMI Product Company	2, 5.5, 8, 14	Electric
214A made by IZUMI Product Company	2, 3.5 (die mark 5.5), 5.5, 8, 14	Manual
REC-Li60S made by IZUMI Product Company	5.5, 8, 14, 22, 38, 60	Electric
9H-60 made by IZUMI Product Company	14, 22, 38, 60	Manual
REC-Li150 made by IZUMI Product Company	14, 22, 38, 60, 100, 150	Electric
REC-Li325 made by IZUMI Product Company	150, 200	Electric