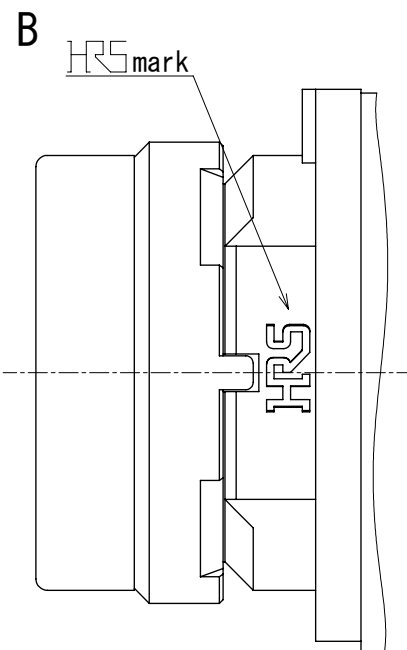
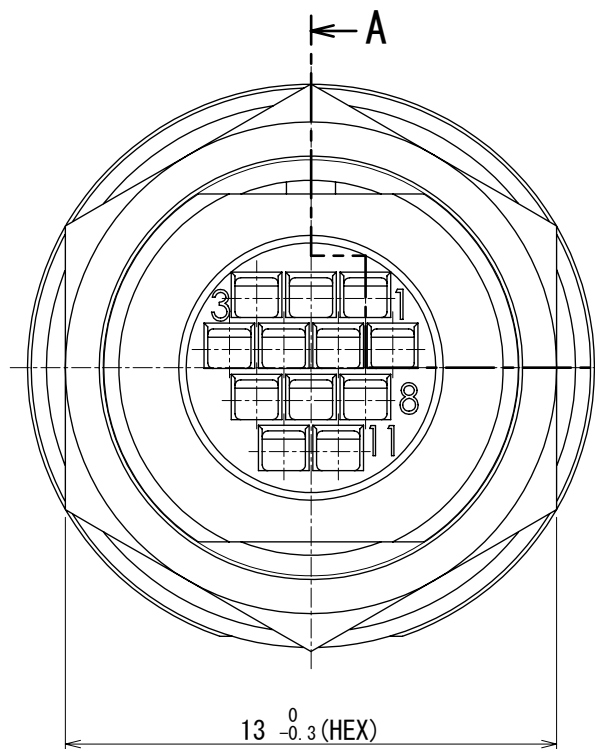
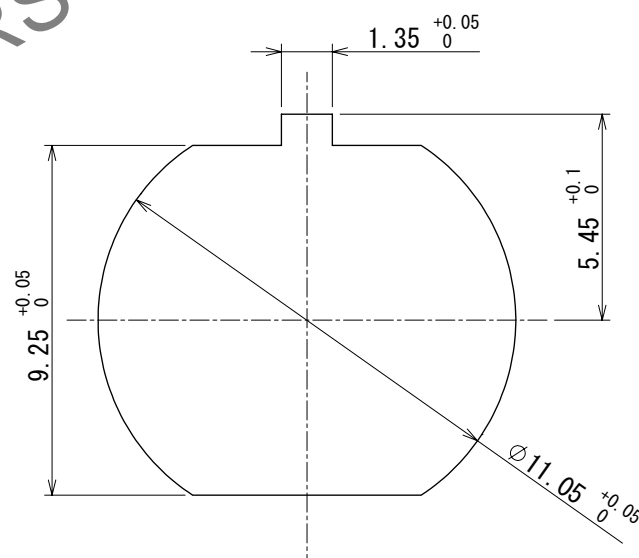


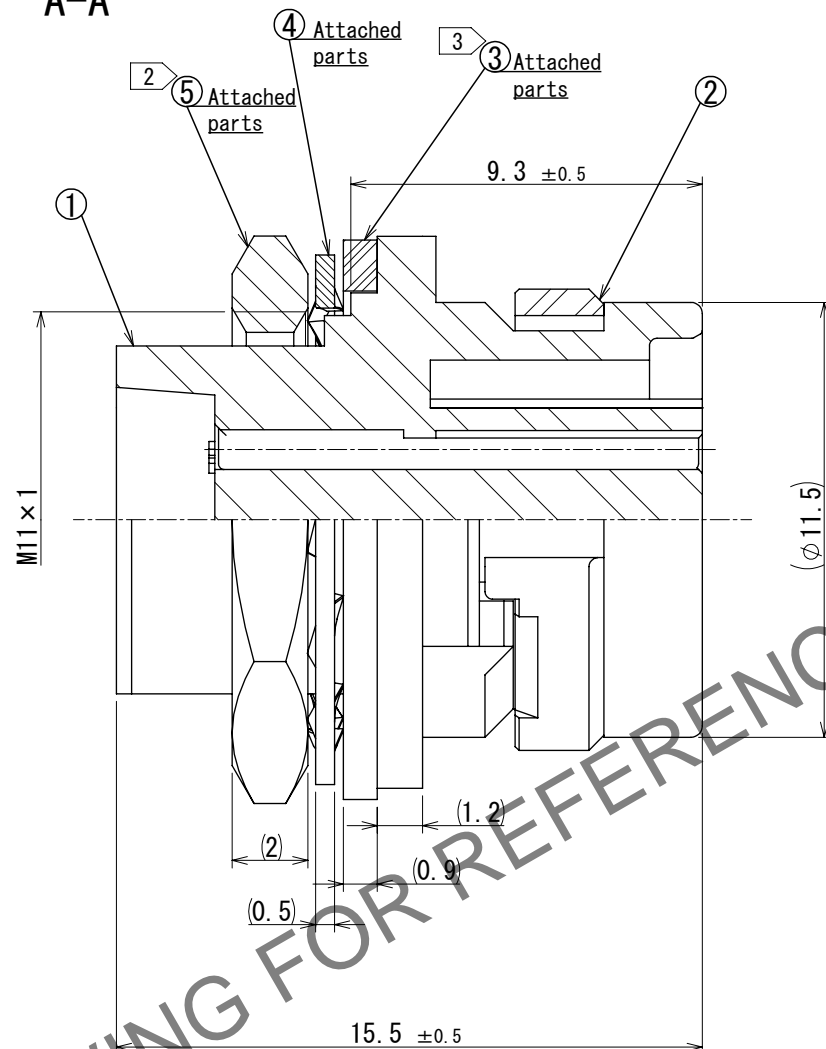
Jun.1.2024 Copyright 2024 HIROSE ELECTRIC CO., LTD. All Rights Reserved.
In case of consideration for using Automotive equipment / device which demand high reliability, kindly contact our sales window correspondents.



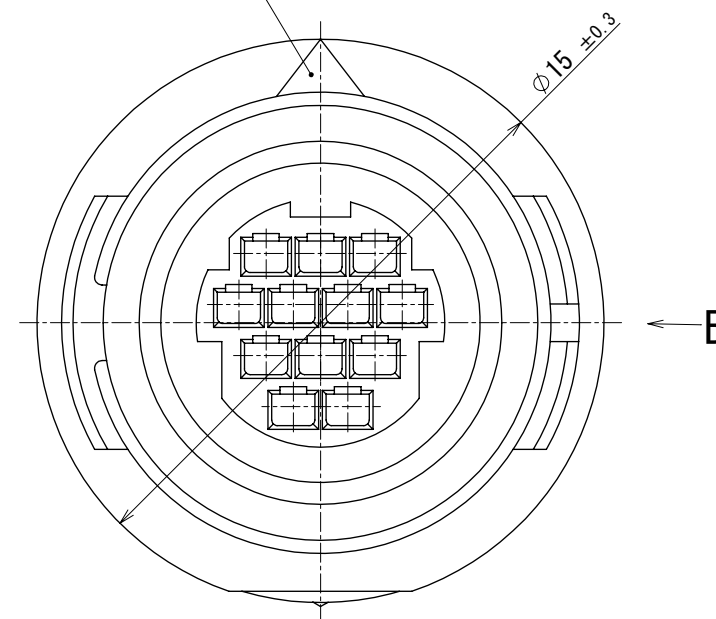
Panel installation hole
Panel thickness (0.7 to 3)



A-A



Mating mark (white)



- Notes 1 Applicable crimping contact: HR30-PC-211
(Applicable wire: 26 to 30 AWG wire jacket diameter: $\phi 1$ max)
Applicable crimp contact extraction tool: HR30-TP
- 2 The recommended clump torque of Ref. No. 5 to be 0.8N · m.
LOCTITE 263, LOCPRIMER 7649, ROCTITE JAPAN is recommended to prevent Ref. No. 5 from loosening.
- 3 After Ref. No. 3 is inserted to Ref. No. 1, Ref. No. 1 is mounted on the panel.
Make sure that Ref. No. 3 does not have any factors to reduce water-resistancy, such as scratch, twist, pinching, or dust.
- 4 The assembly of this product applies to the manual ETAD-C0302-00.

△ CAD change

3	Chloroprene rubber	(Black)			
2	Polyphenylene sulfide	(Black) UL94V-0	5	Brass	Nickel plating
1	Polyphenylene sulfide	(Black) UL94V-0	4	Phosphor bronze	Nickel plating
NO.	MATERIAL	FINISH , REMARKS	NO.	MATERIAL	FINISH , REMARKS
UNITS mm		SCALE 5:1	COUNT 1	DESCRIPTION OF REVISIONS DIS-C-00016293	DESIGNED HY. KISHI
		APPROVED : HY. KOBAYASHI	2018. 02. 26	DRAWING NO.	EDC-112398-31-00
		CHECKED : HY. KOBAYASHI	2018. 02. 26	PART NO.	HR30-8R-12SC (31)
		DESIGNED : DS. MATSUNE	2018. 02. 26	CODE NO.	CL0130-1014-0-31
		DRAWN : DS. MATSUNE	2018. 02. 26		
					DATE 2023. 10. 12