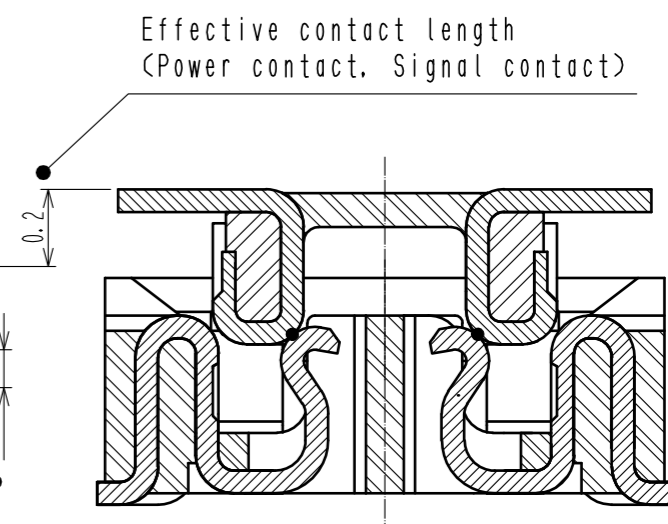
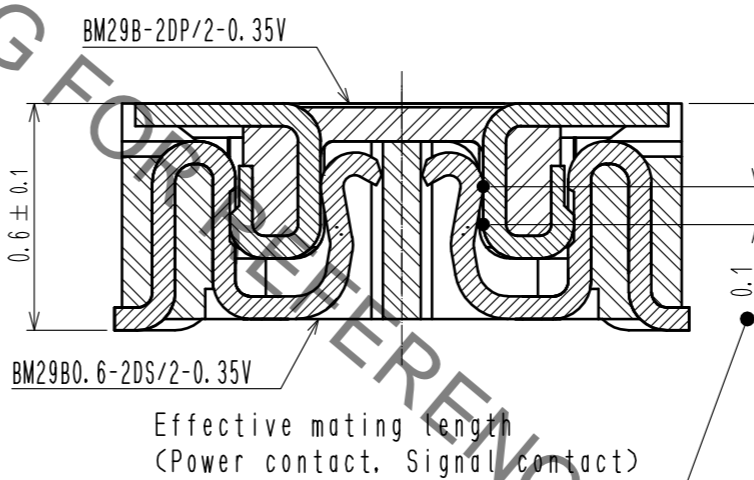
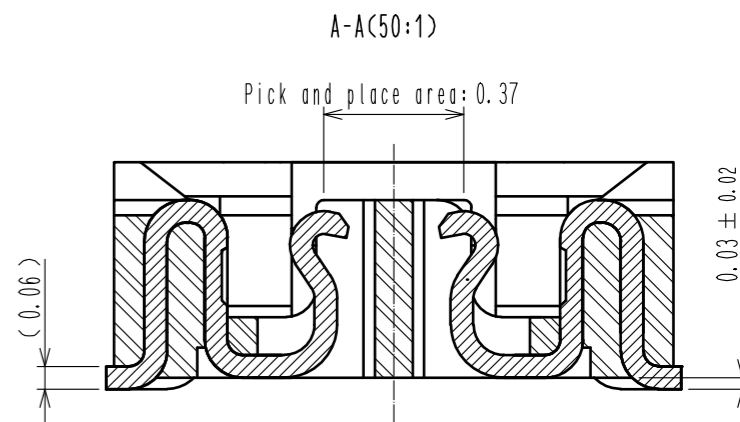
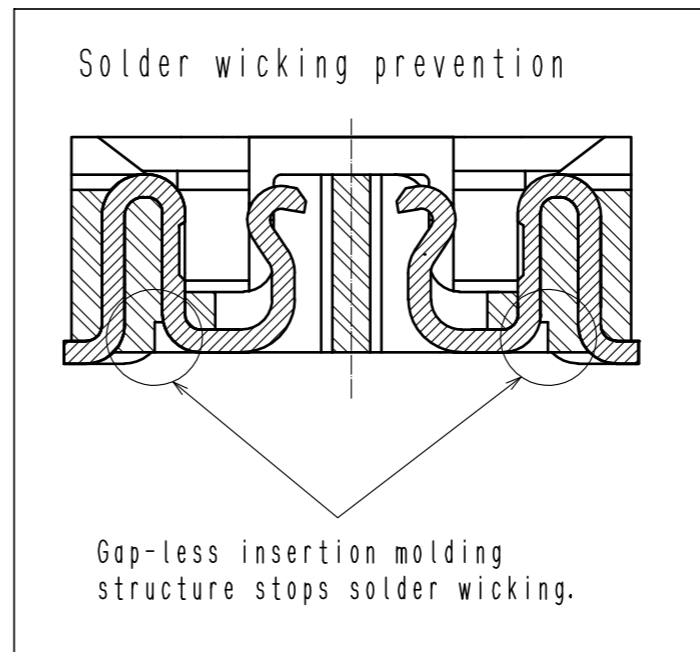
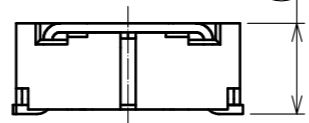
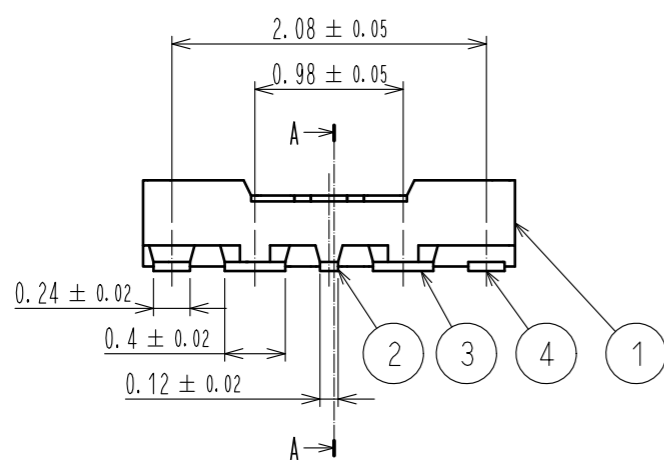
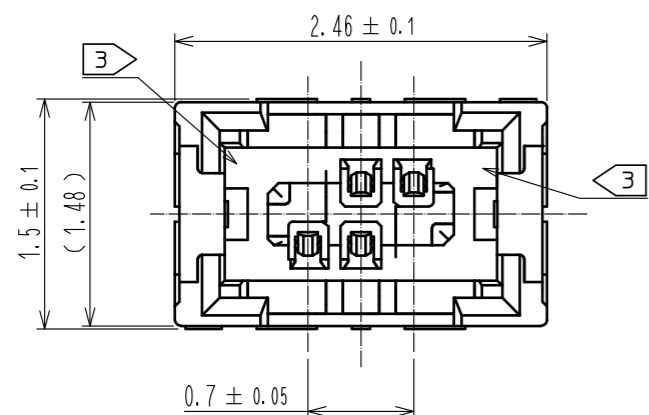


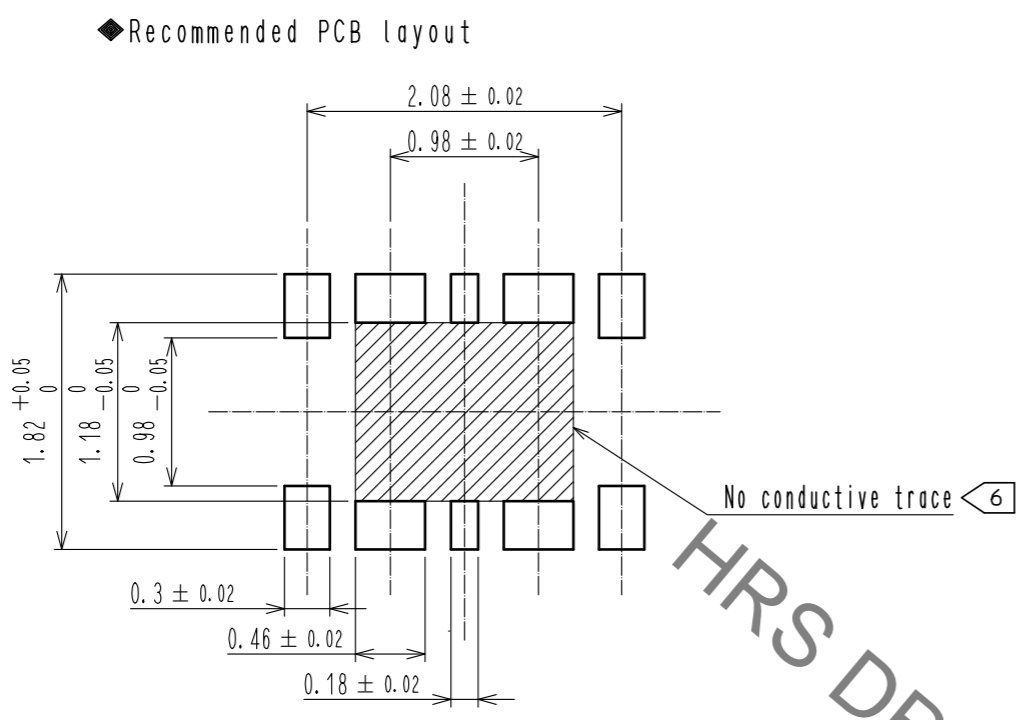
May.1.2019 Copyright 2019 HIROSE ELECTRIC CO., LTD. All Rights Reserved.  
In case of consideration for using Automotive equipment / device which demand high reliability, kindly contact our sales window correspondents.



- NOTE 1 . All lead co-planarity shall be 0.08mm MAX.
- ② . Contact plating specifications  
 Contact area : Gold 0.05μm MIN  
 SMT lead : Gold 0.05μm MIN  
 Under plating : Nickel 1μm MIN  
 (Surface : Sealing)
  - ③ . HRS mark and CAV No. are indicated in approx. position shown.

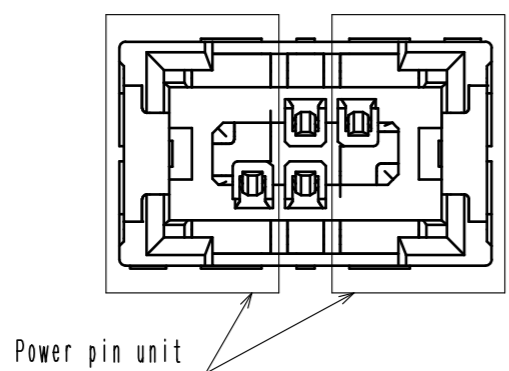
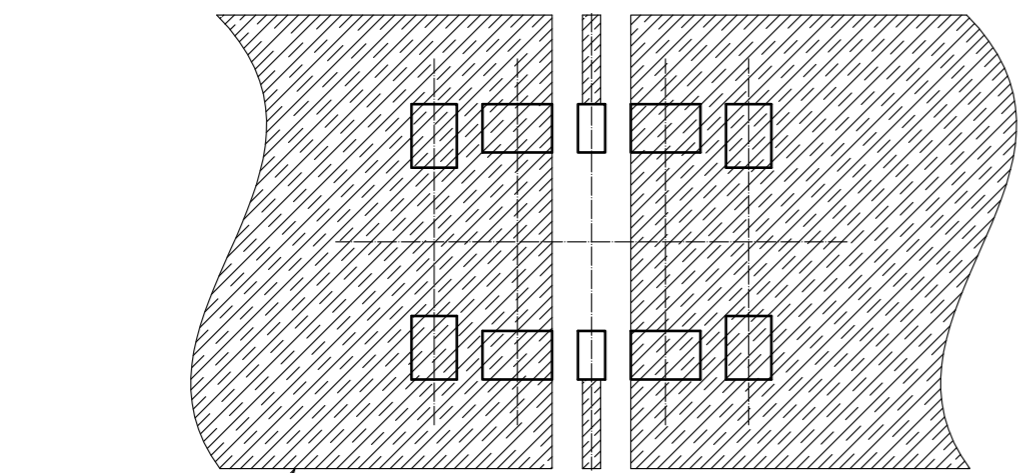
4	PHOSPHOR BRONZE	②	8	PS	CLEAR. REINFORCEMENT COLLAR			
3	PHOSPHOR BRONZE	②	7	PS	BLACK. PLASTIC REEL			
2	PHOSPHOR BRONZE	②	6	POLYESTER	CLEAR. COVER TAPE			
1	LCP	UL94 V-0. BLACK	5	PS	SMOKE GRAY. EMBOSSED CARRIER TAPE			
NO.	MATERIAL	FINISH . REMARKS	NO.	MATERIAL	FINISH . REMARKS			
UNITS	mm	SCALE	20 : 1	COUNT	DESCRIPTION OF REVISIONS	DESIGNED	CHECKED	DATE
<b>HRS</b> HIROSE ELECTRIC CO., LTD.		APPROVED : MO. ISHIDA	16.01.06	DRAWING NO. EDC-362699-53-01				
		CHECKED : WR. FUKUCHI	16.01.06	PART NO. BM29B0.6-2DS/2-0.35V(53)				
		DESIGNED : TY. YAMASAKI	16.01.06	CODE NO. CL673-7001-0-53				
		DRAWN : KR. AJITO	16.01.06					

May.1.2019 Copyright 2019 HIROSE ELECTRIC CO., LTD. All Rights Reserved.  
 In case of consideration for using Automotive equipment / device which demand high reliability, kindly contact our sales window correspondents.

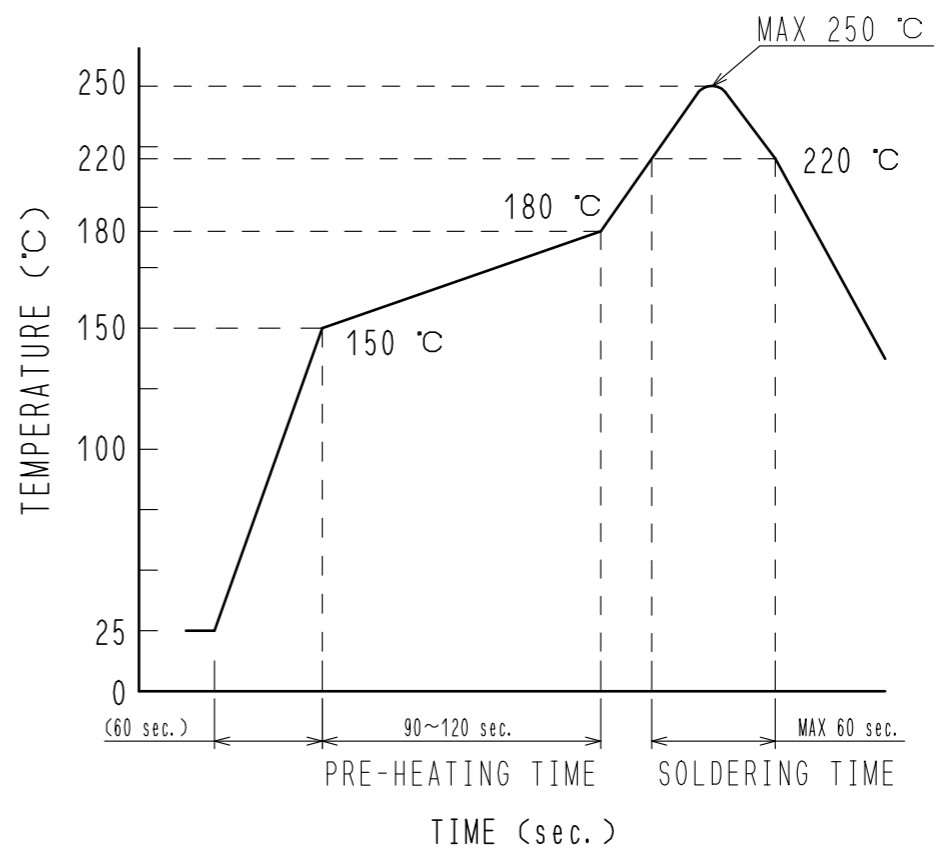


◆ Recommended metal mask dimensions  
 Metal mask thickness : 100 μm  
 (Open ratio : 100% for PCB layout)

◆ Recommended electrical circuit layout



④ Recommended reflow temperature profile using lead-free solder paste.



Reflow method: IR reflow  
 Number of reflow cycles: 2 cycles MAX.  
 1) Reflow time  
 Duration above 220°C: 60 sec MAX.  
 (Peak temperature: 250°C MAX)  
 2) Pre-heat time  
 Pre-heat temperature (MIN): 150°C  
 Pre-heat temperature (MAX): 180°C  
 Pre-heat time: 90-120 sec.

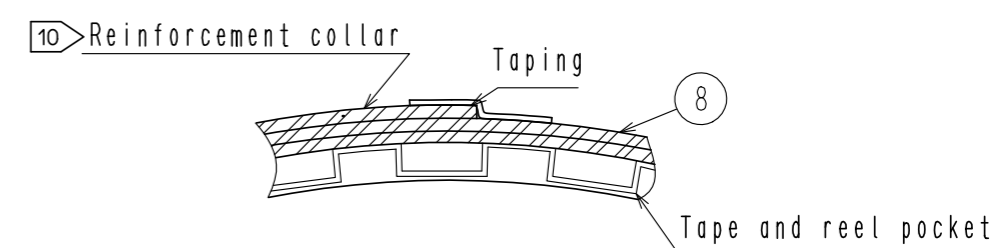
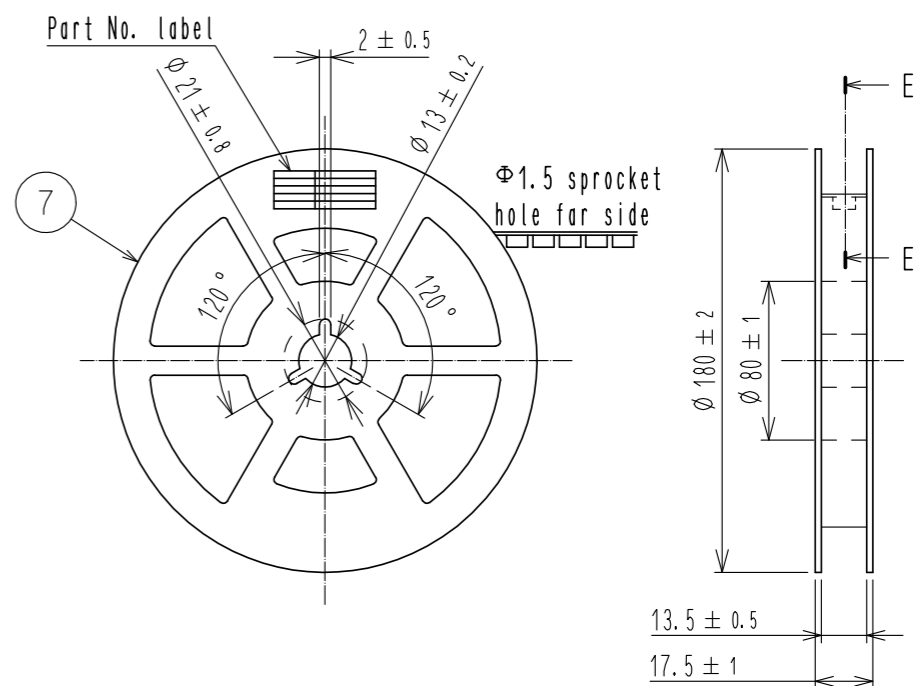
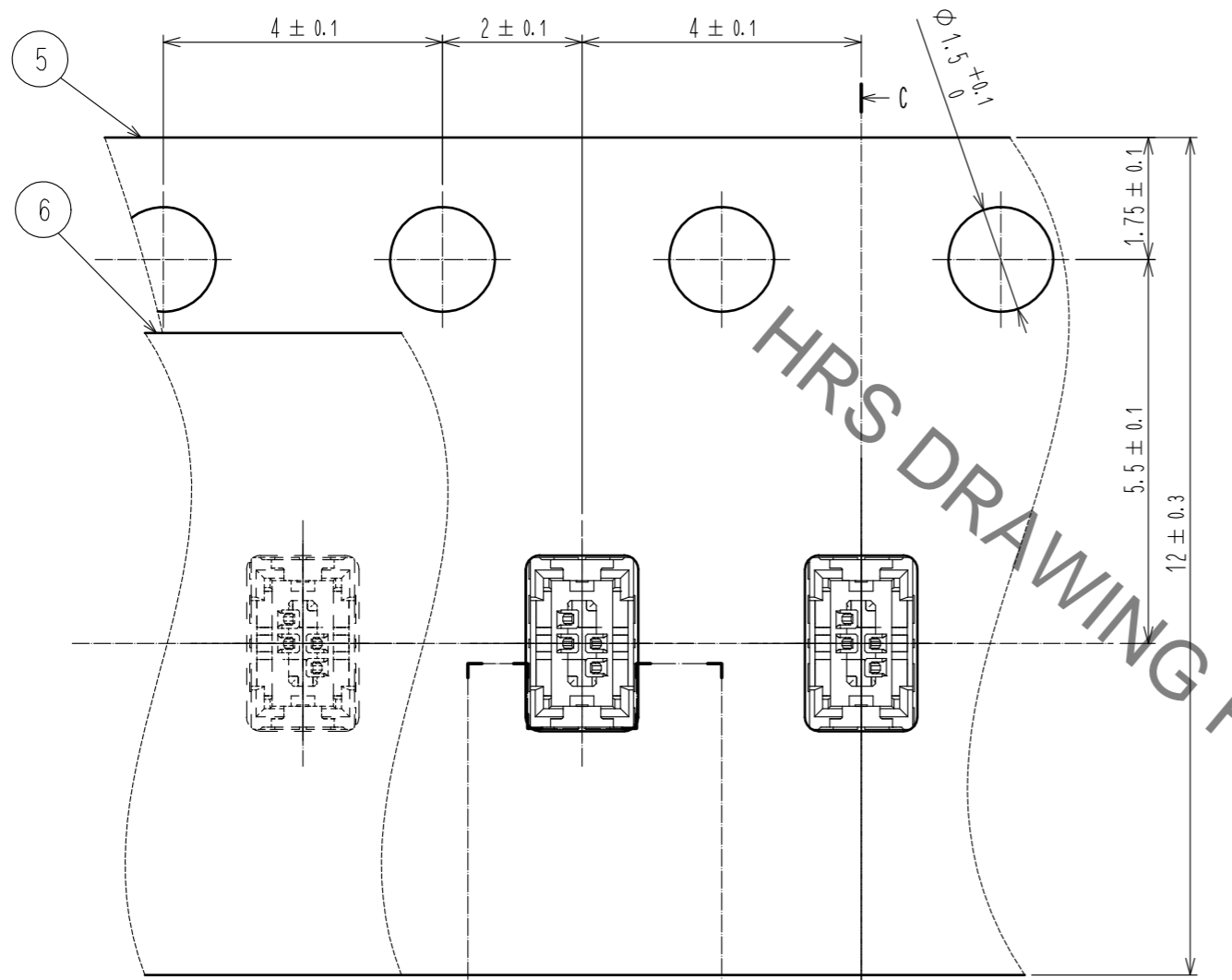
- ④ The temperatures mentioned above refer to the PCB surface temperature near the connector leads. The temperature profiles are based on the above conditions. In individual applications the actual temperature may vary, depending on solder paste type, volume/thickness and board size/thickness. Consult your solder paste and equipment manufacturer for specific recommendations.
5. Please contact us in case you will make different settings from our recommendation.
- ⑥ For the routing on the indicated PCB surface, apply solder resist in order for the insulation treatment.

<b>HRS</b>	DRAWING NO.	EDC-362699-53-01
	PART NO.	BM29B0. 6-2DS/2-0.35V(53)
	CODE NO.	CL673-7001-0-53
		④ 2/3

May.1.2019 Copyright 2019 HIROSE ELECTRIC CO., LTD. All Rights Reserved.  
In case of consideration for using Automotive equipment / device which demand high reliability, kindly contact our sales window correspondents.

Embossed carrier tape packaging (10:1)

Style and dimension of reel (Free)

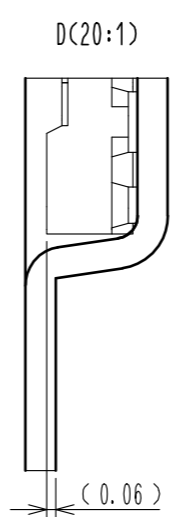
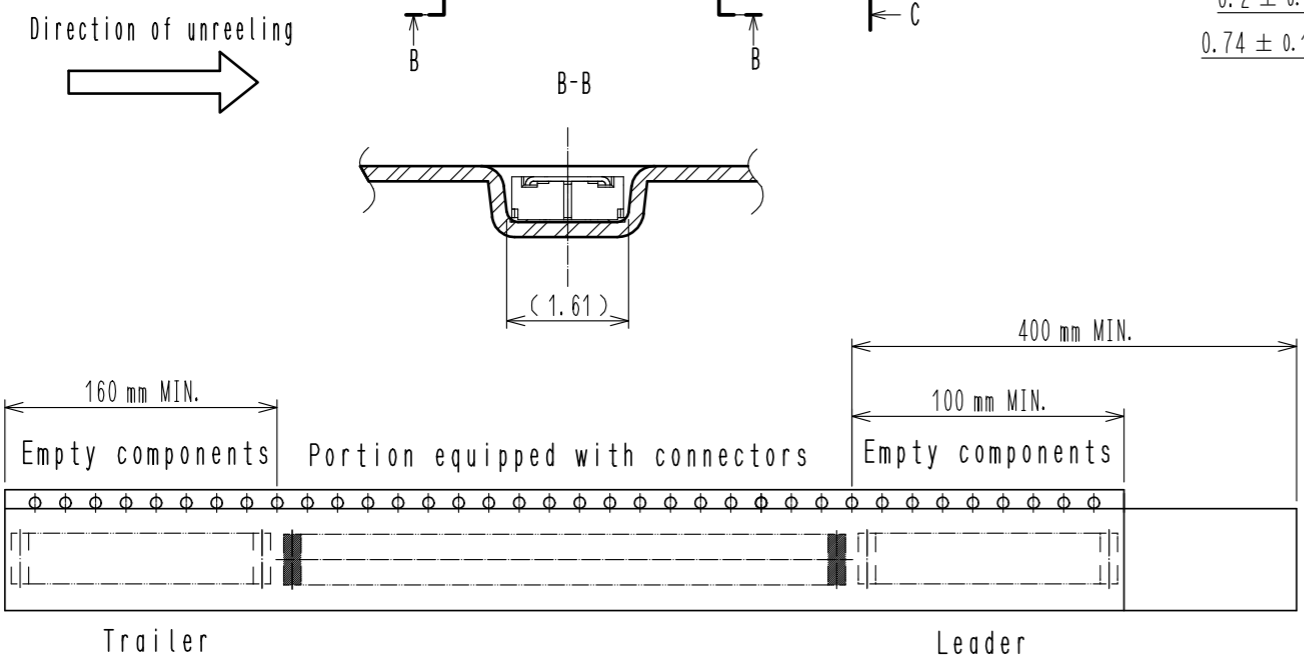


Detail of part No. label

製造年月日	** ** *	Data of manufactured
製品コード	CL0673-7001-0-53	Code No.
製品名	BM29B0.6-2DS/2-0.35V(53)	Part No.
数量	1,000	Quantity
納入者	ヒロセ電機(株)	Supplier

Data of manufactured  
Code No.  
Part No.  
Quantity  
Supplier

- 7 . Per reel 1,000 connectors.
- 8 . The dimensions in parentheses are for reference.
- 9 . Refer to JIS C 0806 and IEC60286-3  
(Packaging of components for automatic handling)
- 10 . Wrap a reinforcing collar made by polystyrene  
to the surface of emboss reel at the termination side  
in order to protect emboss carrier tape, top cover tape.



<b>HRS</b>	DRAWING NO.	EDC-362699-53-01	
	PART NO.	BM29B0.6-2DS/2-0.35V(53)	
	CODE NO.	CL673-7001-0-53	3/3