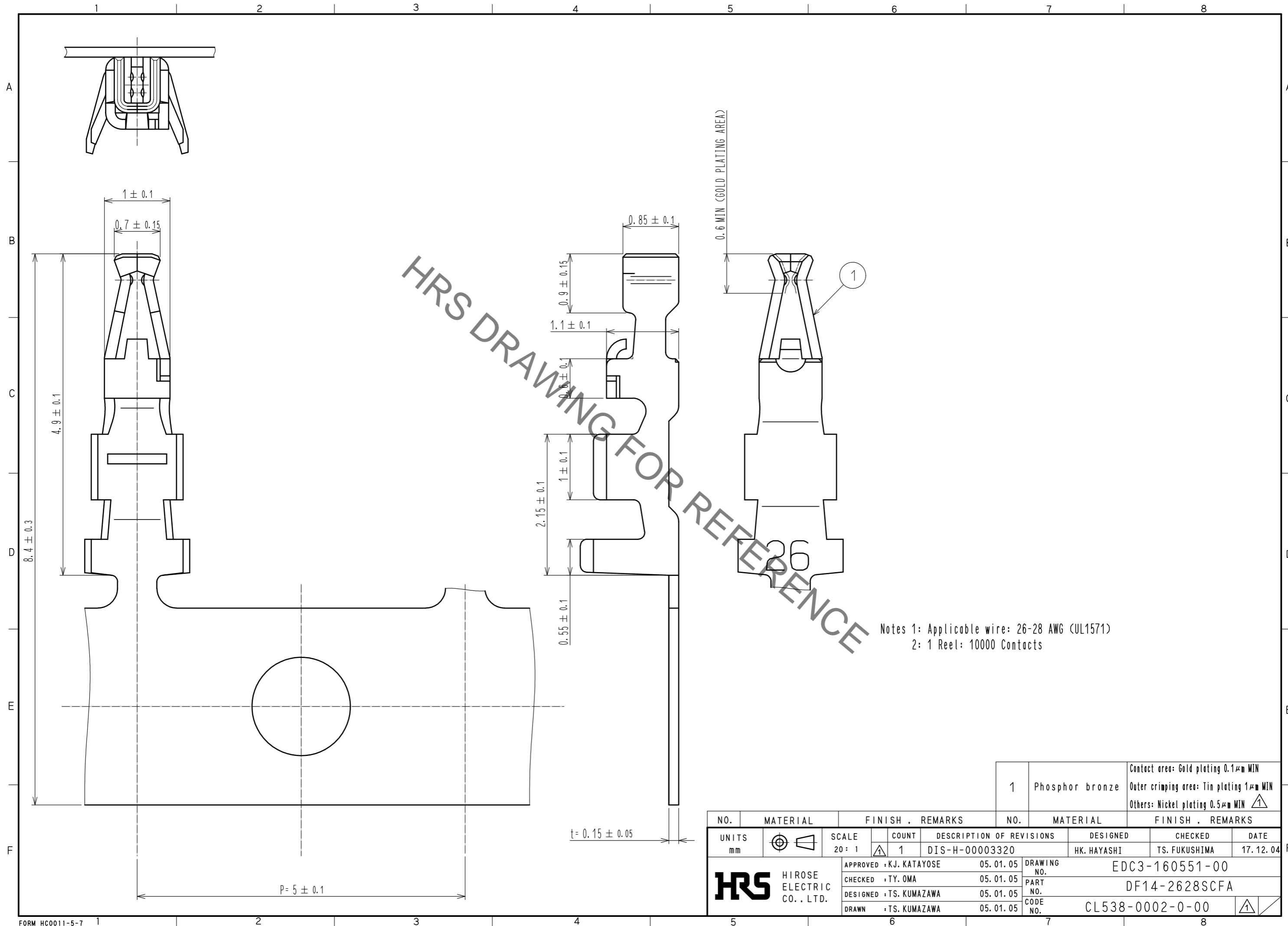


Nov.1.2020 Copyright 2020 HIROSE ELECTRIC CO., LTD. All Rights Reserved.
 In case of consideration for using Automotive equipment / device which demand high reliability, kindly contact our sales window correspondents.



HRS DRAWING FOR REFERENCE

Notes 1: Applicable wire: 26-28 AWG (UL1571)
 2: 1 Reel: 10000 Contacts

NO.	MATERIAL	FINISH . REMARKS	NO.	MATERIAL	FINISH . REMARKS
1	Phosphor bronze	Contact area: Gold plating 0.1μm MIN Outer crimping area: Tin plating 1μm MIN Others: Nickel plating 0.5μm MIN			

UNITS	SCALE	COUNT	DESCRIPTION OF REVISIONS	DESIGNED	CHECKED	DATE
mm	20: 1	1	DIS-H-00003320	HK. HAYASHI	TS. FUKUSHIMA	17. 12. 04

HRS	HIROSE ELECTRIC CO., LTD.	APPROVED : KJ. KATAYOSE	05. 01. 05	DRAWING NO.	EDC3-160551-00
		CHECKED : TY. OMA	05. 01. 05	PART NO.	DF14-2628SCFA
		DESIGNED : TS. KUMAZAWA	05. 01. 05	CODE NO.	CL538-0002-0-00
		DRAWN : TS. KUMAZAWA	05. 01. 05		