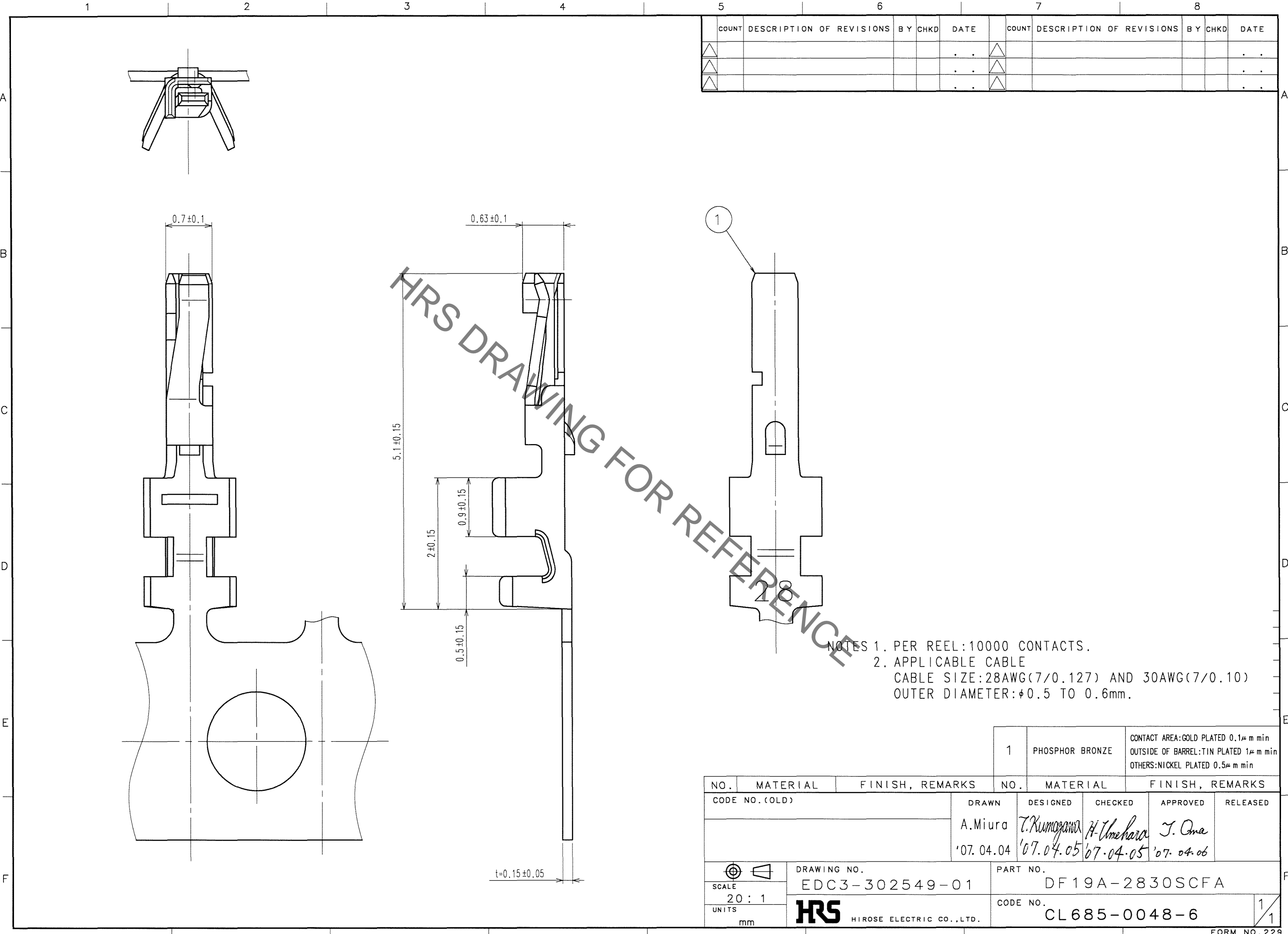


Nov.1.2020 Copyright 2020 HIROSE ELECTRIC CO., LTD. All Rights Reserved.  
In case of consideration for using Automotive equipment / device which demand high reliability, kindly contact our sales window correspondents.



COUNT	DESCRIPTION OF REVISIONS	BY	CHKD	DATE	COUNT	DESCRIPTION OF REVISIONS	BY	CHKD	DATE
△				..	△				..
△				..	△				..
△				..	△				..

HRS DRAWING FOR REFERENCE

NOTES 1. PER REEL: 10000 CONTACTS.  
2. APPLICABLE CABLE  
CABLE SIZE: 28AWG(7/0.127) AND 30AWG(7/0.10)  
OUTER DIAMETER:  $\phi 0.5$  TO  $0.6$ mm.

TO

NO. 1	MATERIAL PHOSPHOR BRONZE	FINISH, REMARKS CONTACT AREA: GOLD PLATED $0.1 \mu\text{m min}$ OUTSIDE OF BARREL: TIN PLATED $1 \mu\text{m min}$ OTHERS: NICKEL PLATED $0.5 \mu\text{m min}$
NO.	MATERIAL	FINISH, REMARKS
CODE NO. (OLD)	DRAWN A.Miura	DESIGNED T.Kumogawa
	'07.04.04	'07.04.05
		H. Umehara
		J. Oma
		'07.04.06
SCALE 20:1	DRAWING NO. EDC3-302549-01	PART NO. DF19A-2830SCFA
UNITS mm	HRS HIROSE ELECTRIC CO., LTD.	CODE NO. CL685-0048-6