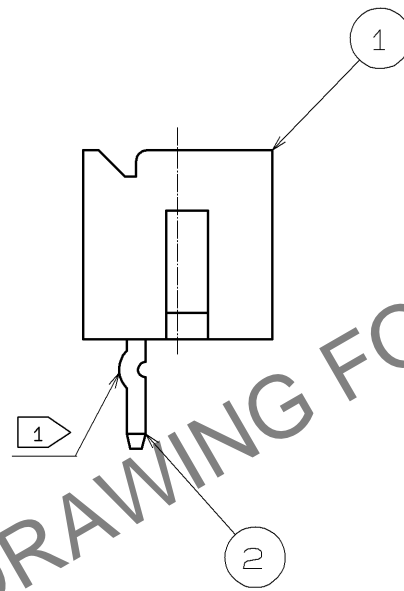
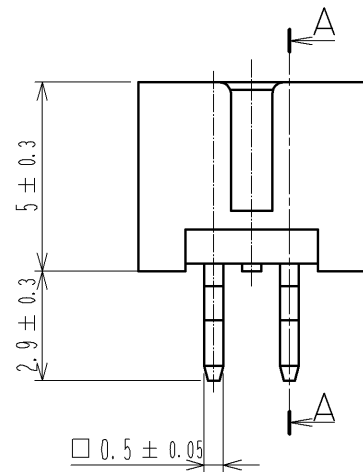
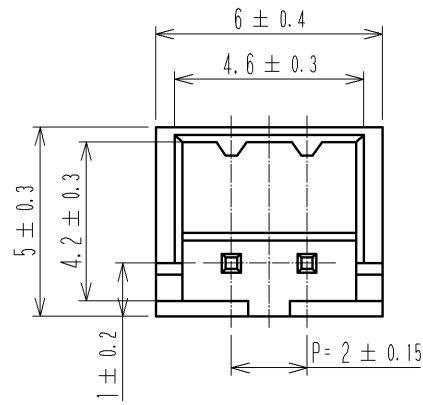
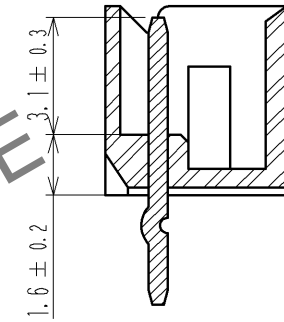


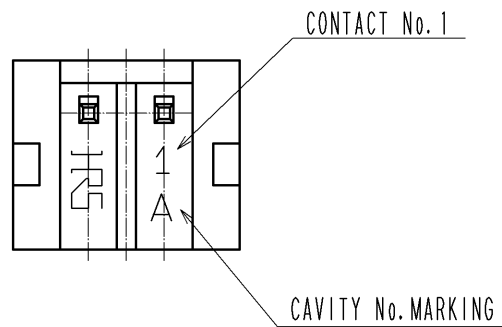
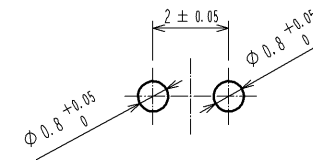
Apr.1.2024 Copyright 2024 HIROSE ELECTRIC CO., LTD. All Rights Reserved.  
In case of consideration for using Automotive equipment / device which demand high reliability, kindly contact our sales window correspondents.



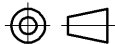


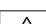
A-A



RECOMMENDED PATTERN



NOTE 1: KINK PROCESSING IS CARRIED OUT TO THE TERMINAL OF BOTH SIDES. (CONTACT No. 1, No. 2)

			2		BRASS		SURFACE:TIN PLATED 1μm min UNDER PLATING:NICKEL PLATED 0.5μm min												
1		POLYAMIDE		BLUE:UL94-0															
NO.		MATERIAL		FINISH , REMARKS		NO.		MATERIAL		FINISH , REMARKS									
UNITS mm				SCALE 5 : 1				COUNT		DESCRIPTION OF REVISIONS		DESIGNED		CHECKED		DATE			
 HIROSE ELECTRIC CO., LTD.				APPROVED : TS. SAKATA				07. 09. 22				DRAWING NO.				EDC3-081445-02			
				CHECED : HK. UMEHARA				07. 09. 22				PART NO.				DF3A-2P-2DSA ( 16 )			
				DESIGNED : TT. OHSAKO				07. 09. 22				CODE NO.				CL543-0165-0-16			
				DRAWN : YK. NAKATSU				07. 09. 19								 1/1			