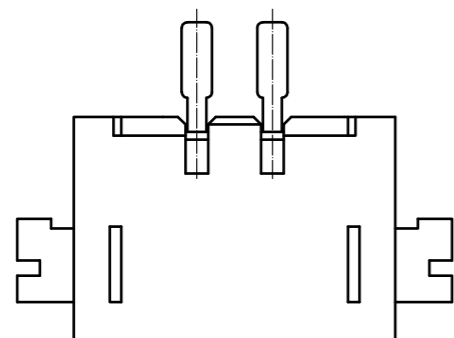
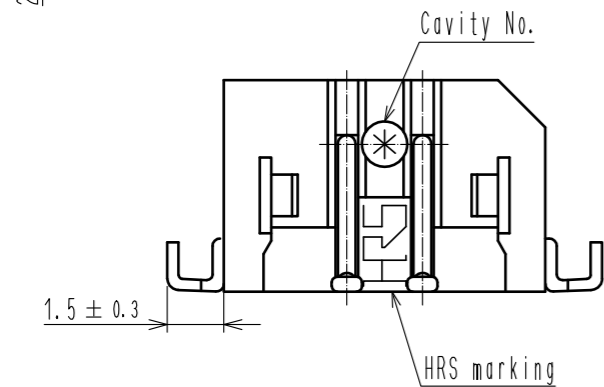
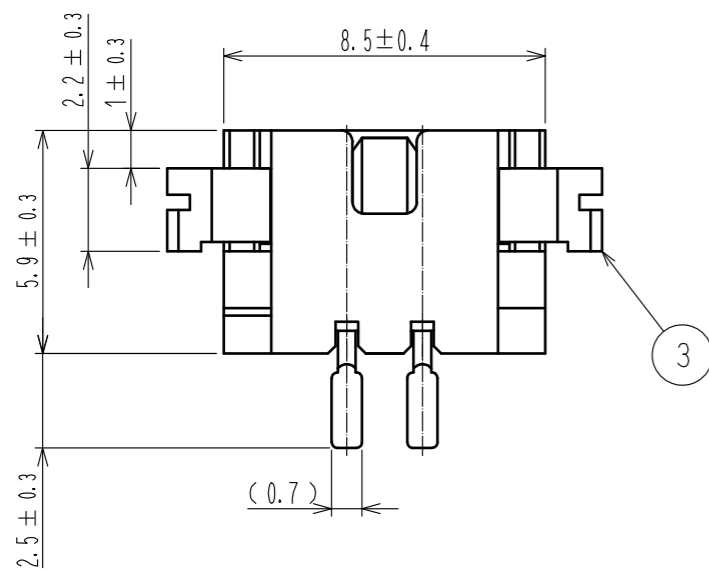
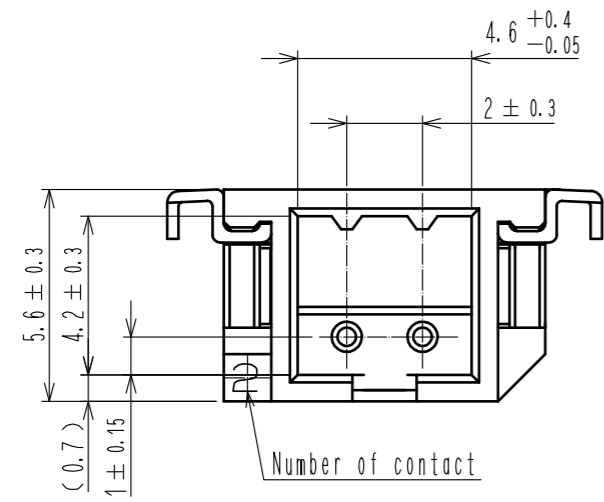
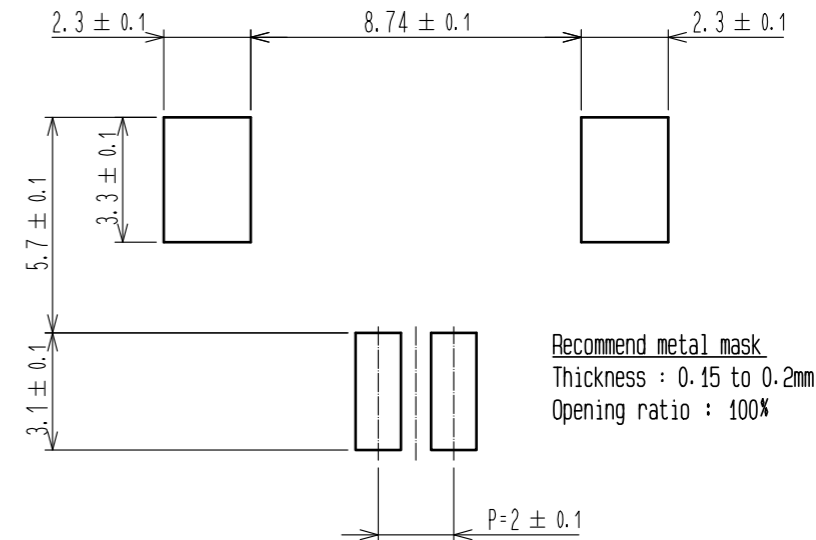


May.1.2022 Copyright 2022 HIROSE ELECTRIC CO., LTD. All Rights Reserved.
In case of consideration for using Automotive equipment / device which demand high reliability, kindly contact our sales window correspondents.



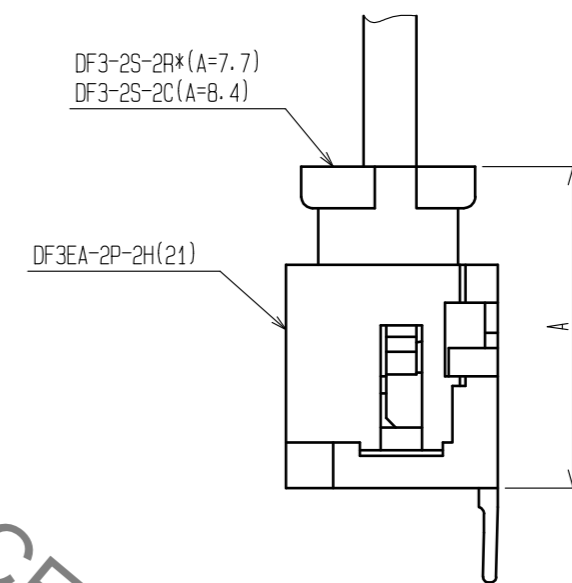
HRS DRAWING FOR REFERENCE

Recommended pattern



Recommend metal mask
Thickness : 0.15 to 0.2mm
Opening ratio : 100%

Mated connectors

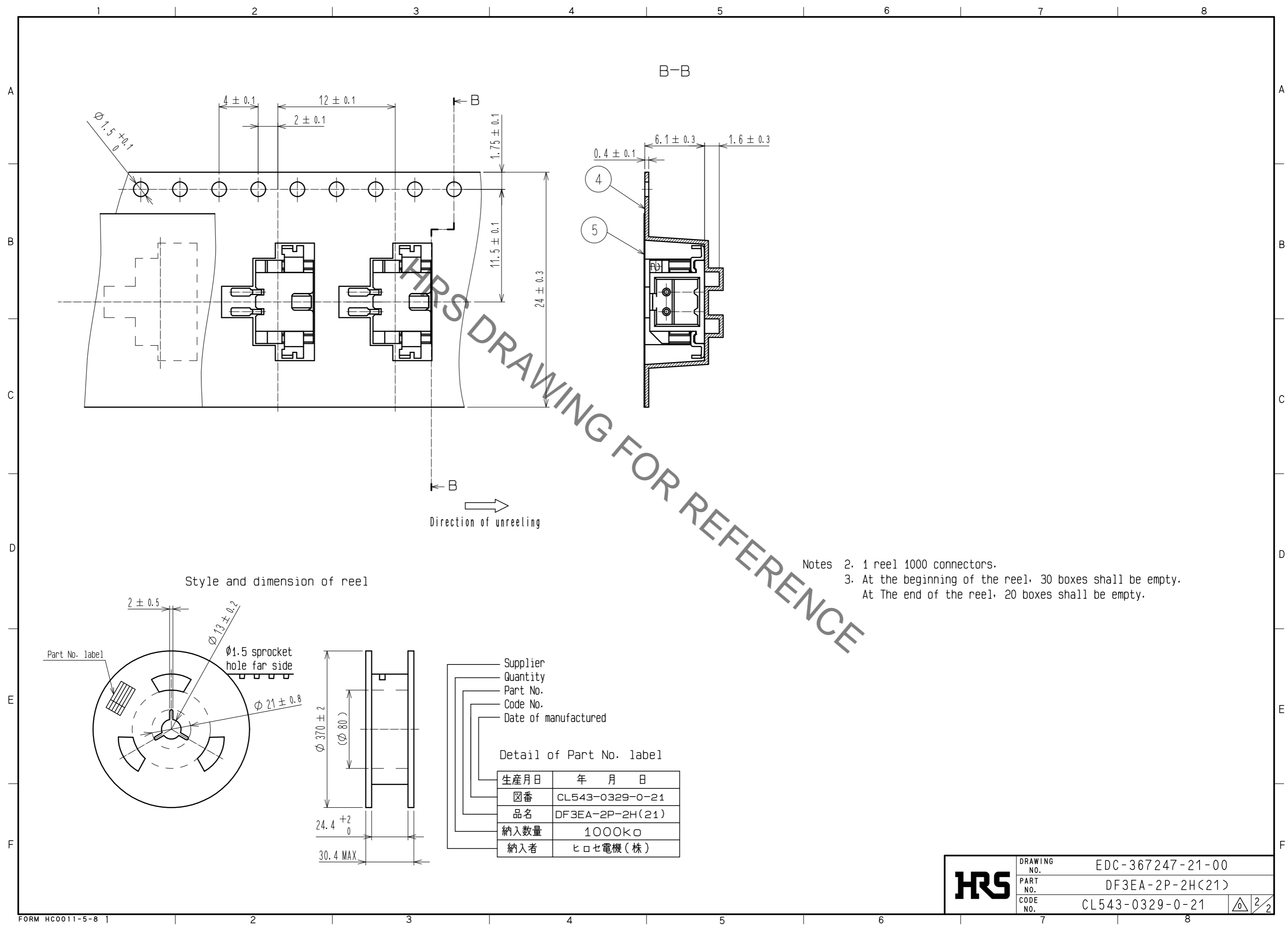


Notes 1. Lead co-planarity include reinforced metal fittings shall be 0.1mm MAX.

NO.	MATERIAL	FINISH . REMARKS	NO.	MATERIAL	FINISH . REMARKS
2	Brass	Surface: Tin plated 1μm MIN (Under plating) Copper plated 0.5μm MIN	5	Polyester	Clear (Cover tape)
1	Polyamide	Natural (Beige), UL94V-0	4	PS	Clear (Embossed carrier tape)
			3	Brass	Surface: Tin plated 1μm MIN (Under plating) Nickel plated 1μm MIN

UNITS	SCALE	COUNT	DESCRIPTION OF REVISIONS	DESIGNED	CHECKED	DATE
mm	5 : 1	△				
APPROVED : HS. OKAWA			17.06.29	DRAWING NO. EDC-367247-21-00		
CHECKED : TS. FUKUSHIMA			17.06.29	PART NO. DF3EA-2P-2H(21)		
DESIGNED : TO. KUROMATSU			17.06.29	CODE NO. CL543-0329-0-21		
DRAWN : TO. KUROMATSU			17.06.29	△ 1/2		

May.1.2022 Copyright 2022 HIROSE ELECTRIC CO., LTD. All Rights Reserved.
 In case of consideration for using Automotive equipment / device which demand high reliability, kindly contact our sales window correspondents.



Notes 2. 1 reel 1000 connectors.
 3. At the beginning of the reel, 30 boxes shall be empty.
 At The end of the reel, 20 boxes shall be empty.

HRS DRAWING FOR REFERENCE

HRS	DRAWING NO.	EDC-367247-21-00
	PART NO.	DF3EA-2P-2H(21)
	CODE NO.	CL543-0329-0-21
		△ 2/2