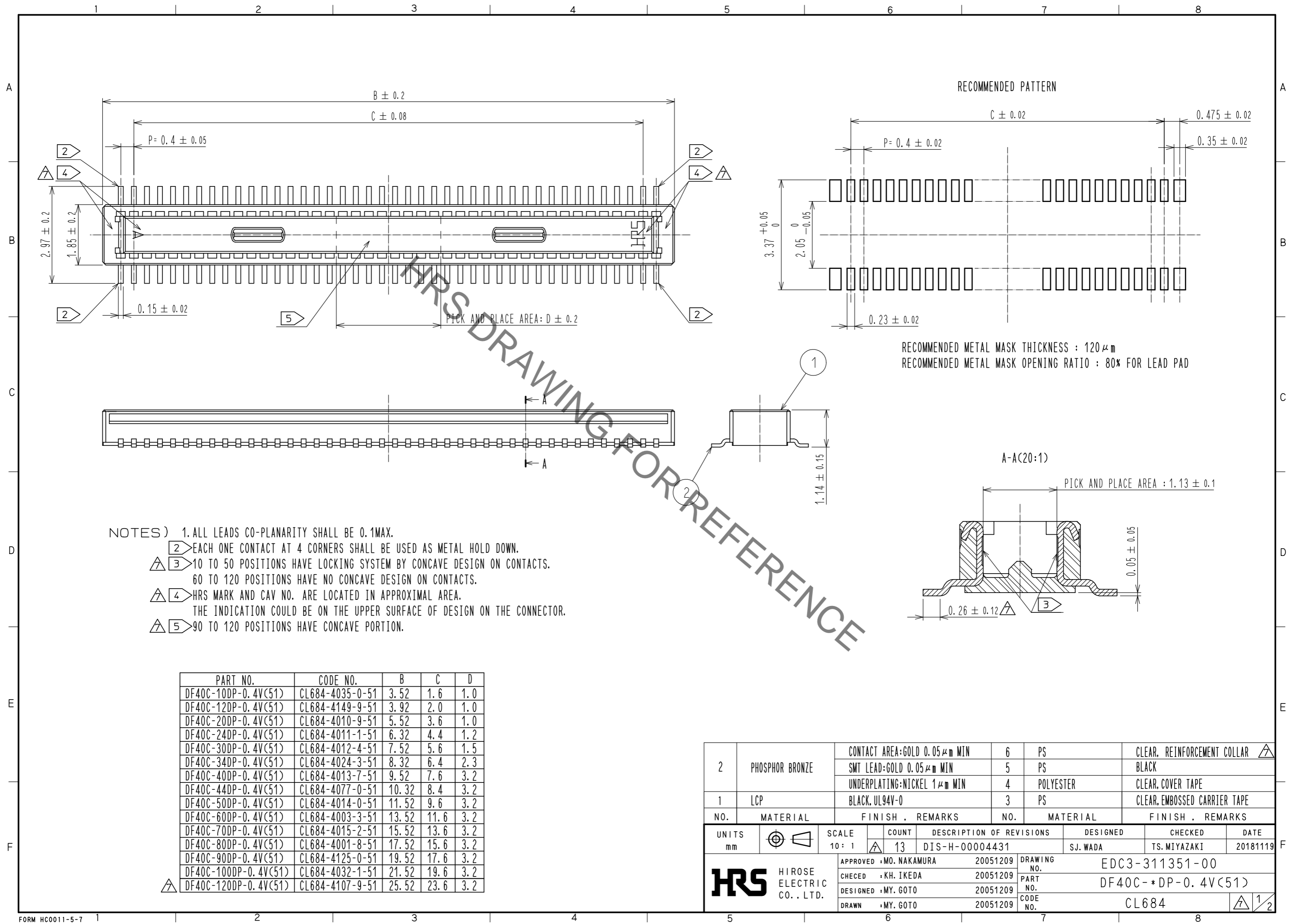


May.1.2019 Copyright 2019 HIROSE ELECTRIC CO., LTD. All Rights Reserved.  
In case of consideration for using Automotive equipment / device which demand high reliability, kindly contact our sales window correspondents.



| PART NO.             | CODE NO.        | B     | C    | D   |
|----------------------|-----------------|-------|------|-----|
| DF40C-10DP-0.4V(51)  | CL684-4035-0-51 | 3.52  | 1.6  | 1.0 |
| DF40C-12DP-0.4V(51)  | CL684-4149-9-51 | 3.92  | 2.0  | 1.0 |
| DF40C-20DP-0.4V(51)  | CL684-4010-9-51 | 5.52  | 3.6  | 1.0 |
| DF40C-24DP-0.4V(51)  | CL684-4011-1-51 | 6.32  | 4.4  | 1.2 |
| DF40C-30DP-0.4V(51)  | CL684-4012-4-51 | 7.52  | 5.6  | 1.5 |
| DF40C-34DP-0.4V(51)  | CL684-4024-3-51 | 8.32  | 6.4  | 2.3 |
| DF40C-40DP-0.4V(51)  | CL684-4013-7-51 | 9.52  | 7.6  | 3.2 |
| DF40C-44DP-0.4V(51)  | CL684-4077-0-51 | 10.32 | 8.4  | 3.2 |
| DF40C-50DP-0.4V(51)  | CL684-4014-0-51 | 11.52 | 9.6  | 3.2 |
| DF40C-60DP-0.4V(51)  | CL684-4003-3-51 | 13.52 | 11.6 | 3.2 |
| DF40C-70DP-0.4V(51)  | CL684-4015-2-51 | 15.52 | 13.6 | 3.2 |
| DF40C-80DP-0.4V(51)  | CL684-4001-8-51 | 17.52 | 15.6 | 3.2 |
| DF40C-90DP-0.4V(51)  | CL684-4125-0-51 | 19.52 | 17.6 | 3.2 |
| DF40C-100DP-0.4V(51) | CL684-4032-1-51 | 21.52 | 19.6 | 3.2 |
| DF40C-120DP-0.4V(51) | CL684-4107-9-51 | 25.52 | 23.6 | 3.2 |

| NO. | MATERIAL        | FINISH                        | REMARKS | NO.       | MATERIAL | FINISH | REMARKS                      |
|-----|-----------------|-------------------------------|---------|-----------|----------|--------|------------------------------|
| 2   | PHOSPHOR BRONZE | CONTACT AREA:GOLD 0.05 μm MIN | 6       | PS        |          |        | CLEAR. REINFORCEMENT COLLAR  |
|     |                 | SMT LEAD:GOLD 0.05 μm MIN     | 5       | PS        |          |        | BLACK                        |
|     |                 | UNDERPLATING:NICKEL 1 μm MIN  | 4       | POLYESTER |          |        | CLEAR. COVER TAPE            |
| 1   | LCP             | BLACK. UL94V-0                | 3       | PS        |          |        | CLEAR. EMBOSSED CARRIER TAPE |

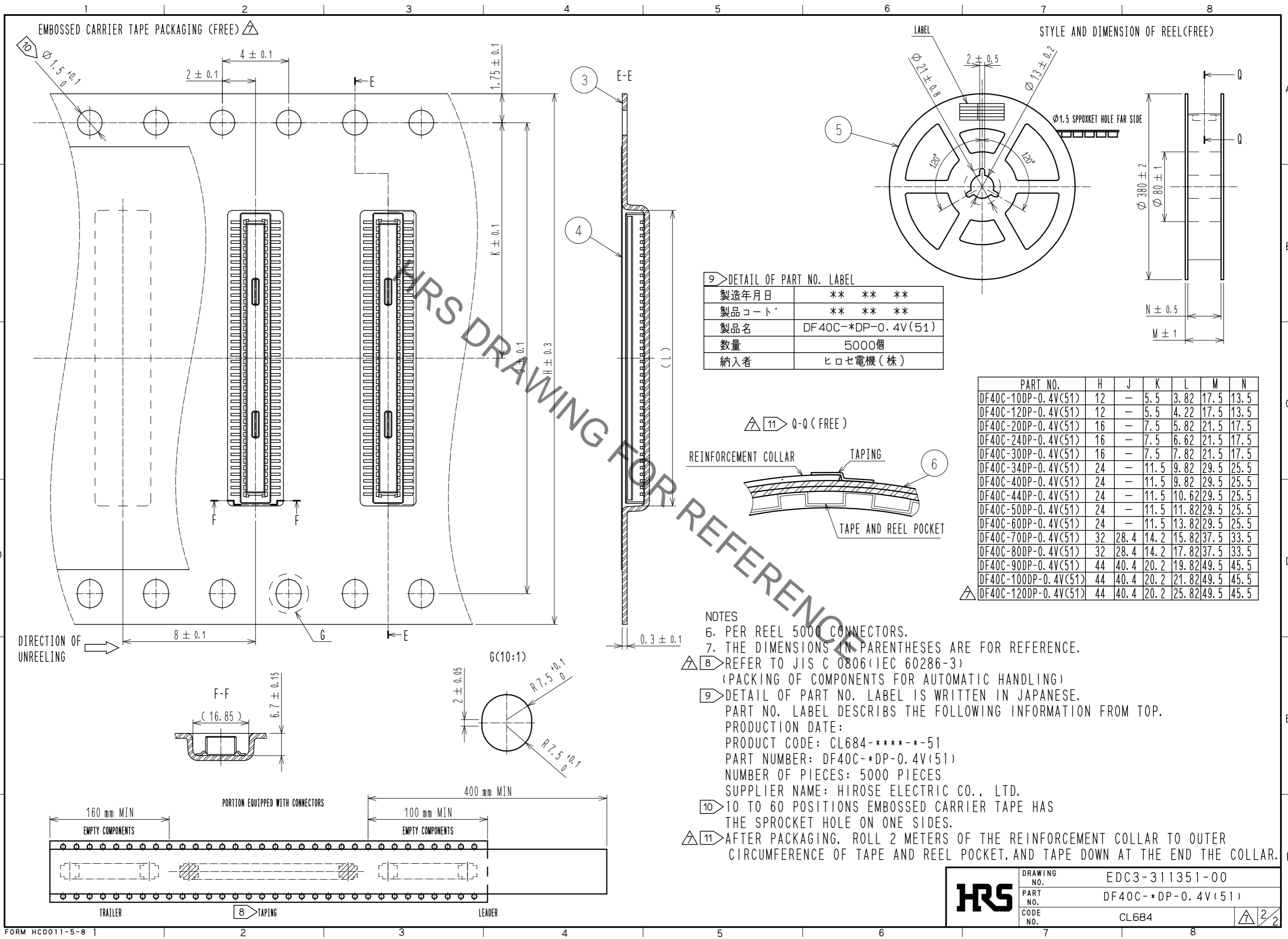
  

| UNITS | SCALE | COUNT | DESCRIPTION OF REVISIONS | DESIGNED | CHECKED      | DATE     |
|-------|-------|-------|--------------------------|----------|--------------|----------|
| mm    | 10:1  | 13    | DIS-H-00004431           | SJ. WADA | TS. MIYAZAKI | 20181119 |

|                         |          |             |                    |
|-------------------------|----------|-------------|--------------------|
| APPROVED : MO. NAKAMURA | 20051209 | DRAWING NO. | EDC3-311351-00     |
| CHECED : KH. IKEDA      | 20051209 | PART NO.    | DF40C-*DP-0.4V(51) |
| DESIGNED : MY. GOTO     | 20051209 | CODE NO.    | CL684              |
| DRAWN : MY. GOTO        | 20051209 |             |                    |

May.1.2019 Copyright 2019 HIROSE ELECTRIC CO., LTD. All Rights Reserved.  
 In case of consideration for using Automotive equipment / device which demand high reliability, kindly contact our sales window correspondents.



|            |             |                    |
|------------|-------------|--------------------|
| <b>HRS</b> | DRAWING NO. | EDC3-311351-00     |
|            | PART NO.    | DF40C-*DP-0.4V(51) |
|            | CODE NO.    | CL684              |