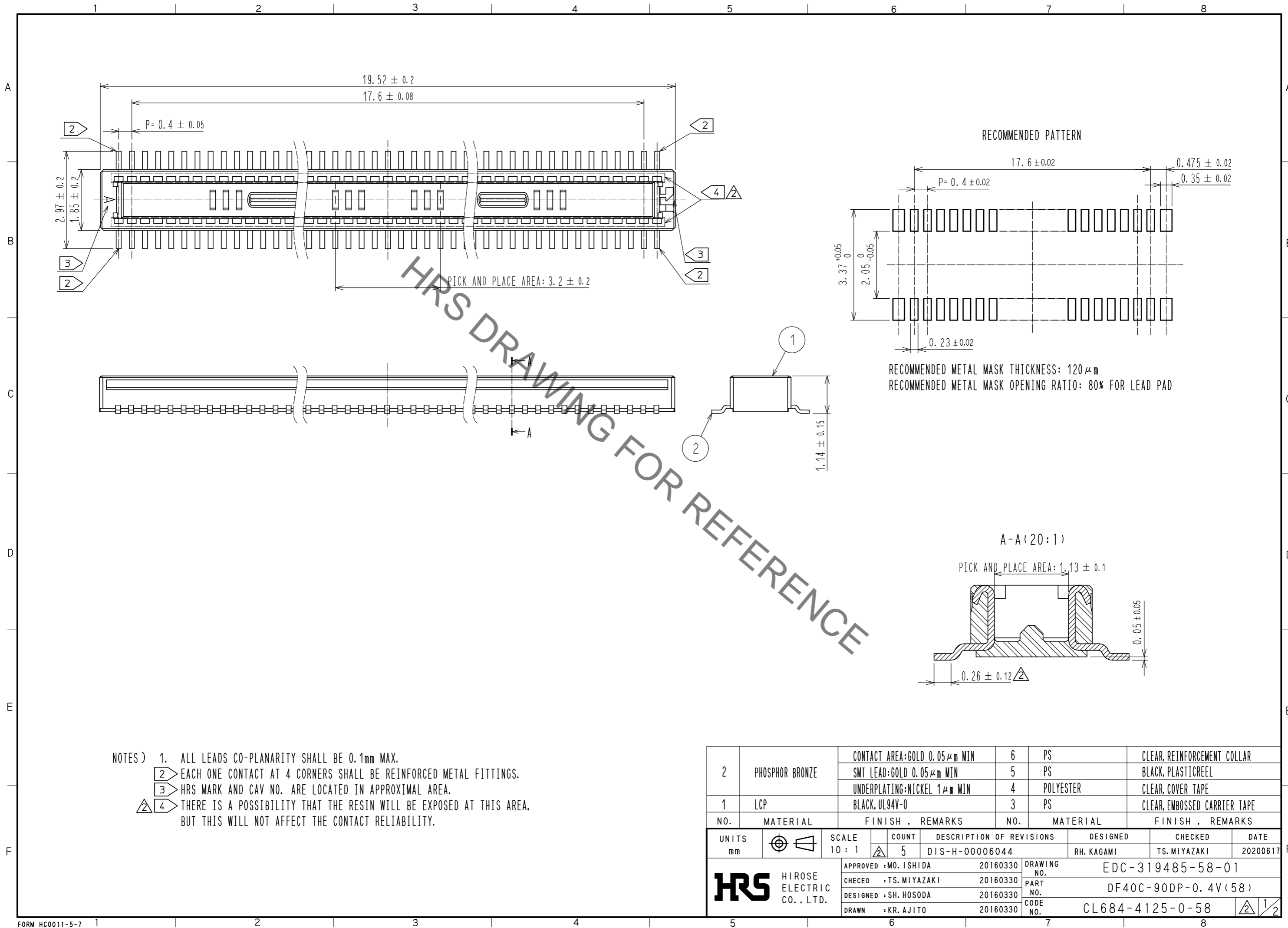


Jan.1.2022 Copyright 2022 HIROSE ELECTRIC CO., LTD. All Rights Reserved.
 In case of consideration for using Automotive equipment / device which demand high reliability, kindly contact our sales window correspondents.



- NOTES) 1. ALL LEADS CO-PLANARITY SHALL BE 0.1mm MAX.
 2 EACH ONE CONTACT AT 4 CORNERS SHALL BE REINFORCED METAL FITTINGS.
 3 HRS MARK AND CAV NO. ARE LOCATED IN APPROXIMAL AREA.
 4 THERE IS A POSSIBILITY THAT THE RESIN WILL BE EXPOSED AT THIS AREA.
 BUT THIS WILL NOT AFFECT THE CONTACT RELIABILITY.

NO.	MATERIAL	FINISH .	REMARKS	NO.	MATERIAL	FINISH .	REMARKS
2	PHOSPHOR BRONZE	CONTACT AREA:GOLD	$0.05 \mu\text{m}$ MIN	6	PS	CLEAR.	REINFORCEMENT COLLAR
		SMT LEAD:GOLD	$0.05 \mu\text{m}$ MIN	5	PS	BLACK.	PLASTICREEL
		UNDERPLATING:NICKEL	$1 \mu\text{m}$ MIN	4	POLYESTER	CLEAR.	COVER TAPE
1	LCP	BLACK.	UL94V-0	3	PS	CLEAR.	EMBOSSED CARRIER TAPE

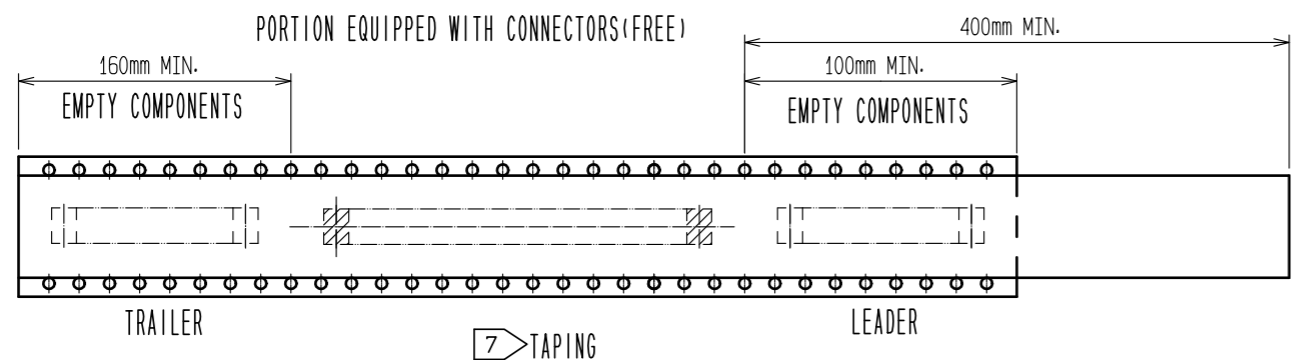
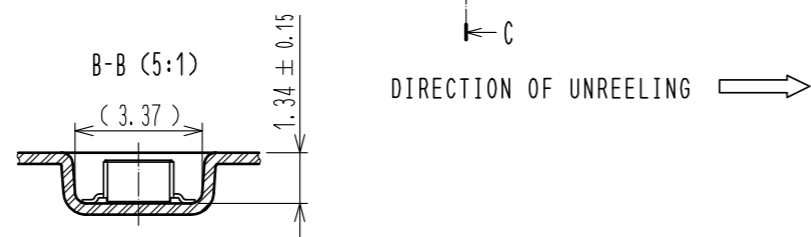
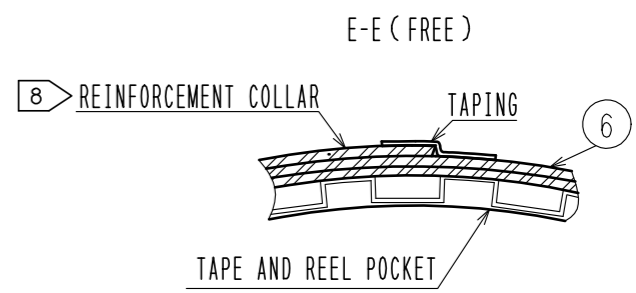
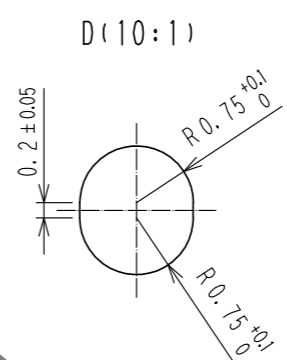
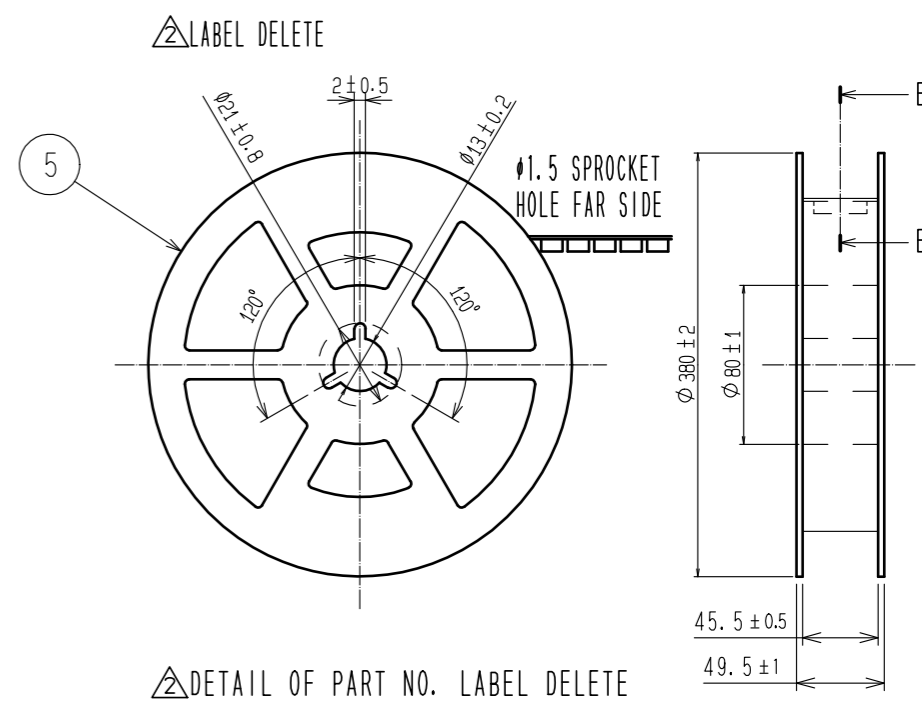
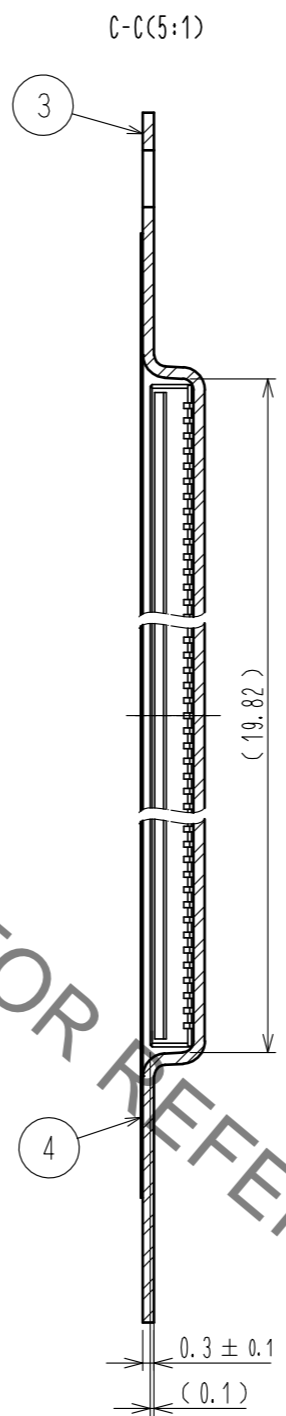
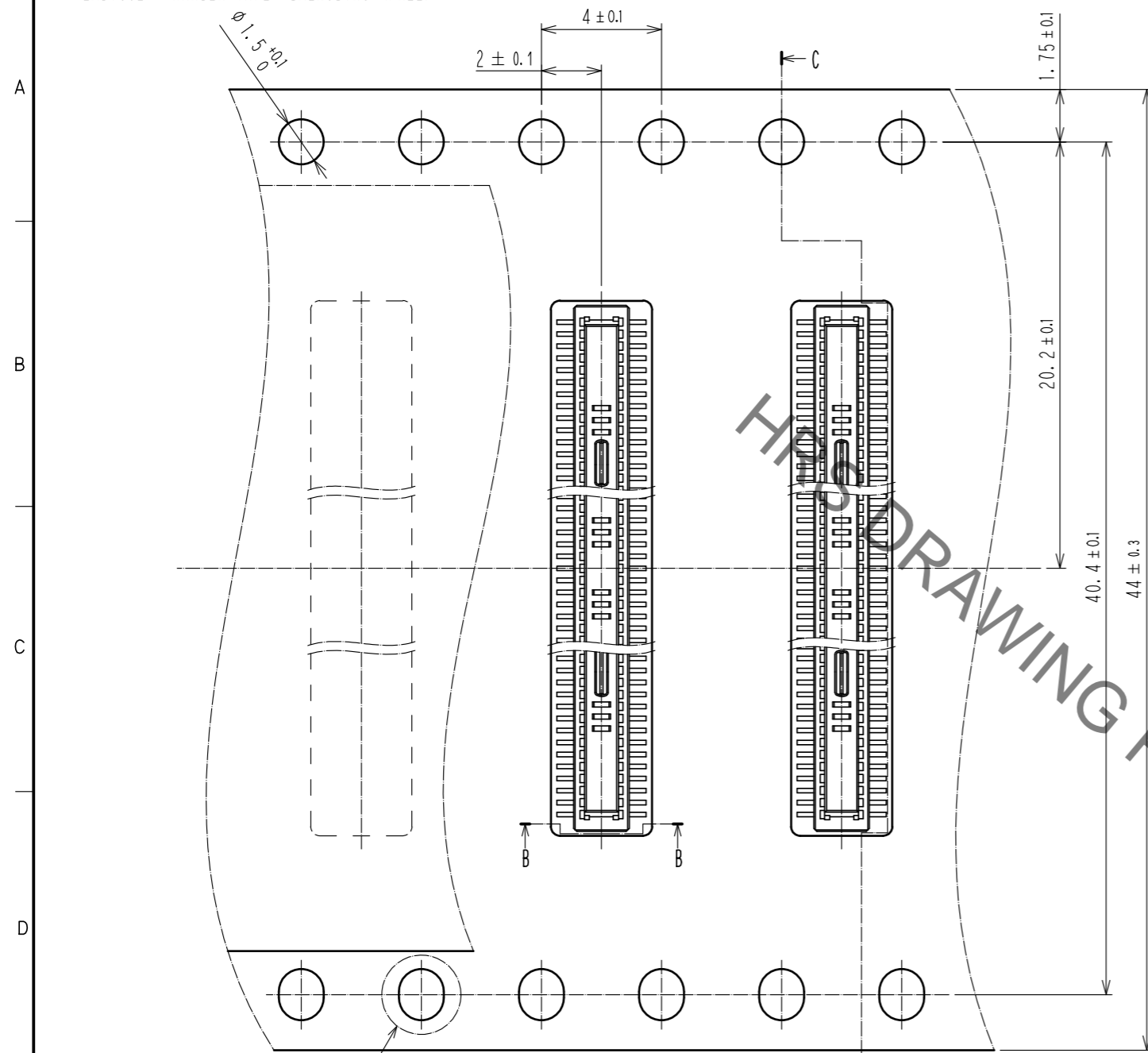
UNITS	SCALE	COUNT	DESCRIPTION OF REVISIONS	DESIGNED	CHECKED	DATE
mm	10:1	5	DIS-H-00006044	RH. KAGAMI	TS. MIYAZAKI	20200617

APPROVED	CHECED	DESIGNED	DRAWN	NO.	DRAWING NO.	PART NO.	CODE NO.
MO. ISHIDA	TS. MIYAZAKI	SH. HOSODA	KR. AJITO	20160330	EDC-319485-58-01	DF40C-90DP-0.4V(58)	CL684-4125-0-58

Jan.1.2022 Copyright 2022 HIROSE ELECTRIC CO., LTD. All Rights Reserved.
 In case of consideration for using Automotive equipment / device which demand high reliability, kindly contact our sales window correspondents.

EMBOSSED CARRIER TAPE DIMENSIONS (FREE)

STYLE AND DIMENSIONS OF REEL (FREE)



- NOTES
5. PER REEL 1000 CONNECTORS.
 6. THE DIMENSIONS IN PARENTHESES ARE FOR REFERENCE.
 7. REFER TO JIS C 0806 (IEC 60286-3) (PACKING OF COMPONENTS FOR AUTOMATIC HANDLING)
 8. AFTER PACKAGING, ROLL 2 METERS OF THE REINFORCEMENT COLLAR TO OUTER CIRCUMFERENCE OF TAPE AND REEL POCKET, AND TAPE DOWN AT THE END THE COLLAR.

HRS	DRAWING NO.	EDC-319485-58-01
	PART NO.	DF40C-90DP-0.4V(58)
	CODE NO.	CL684-4125-0-58
		2/2