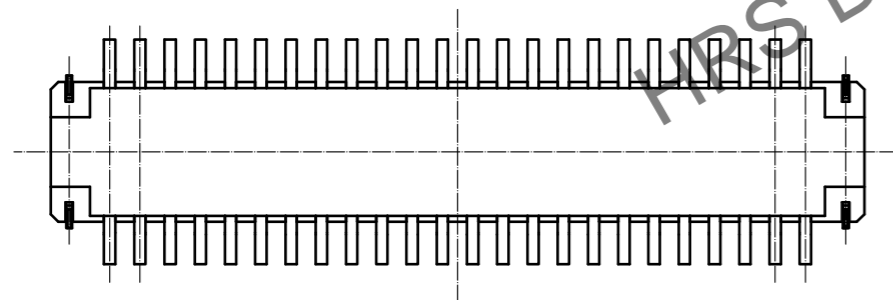
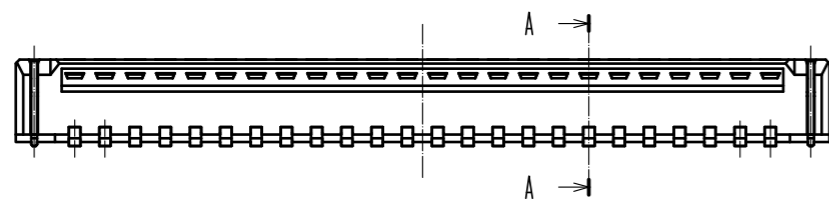
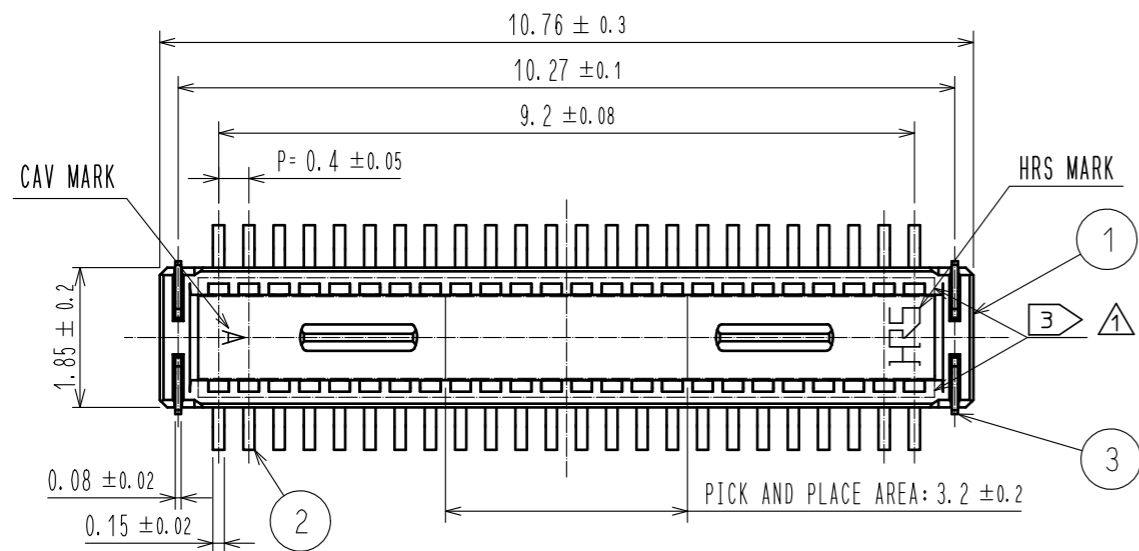
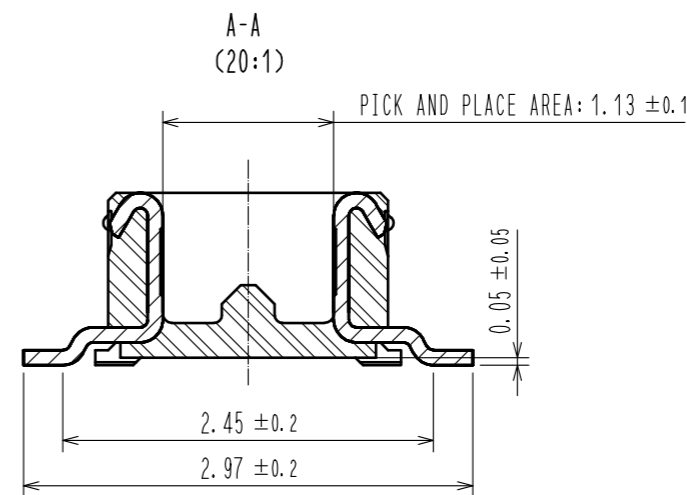
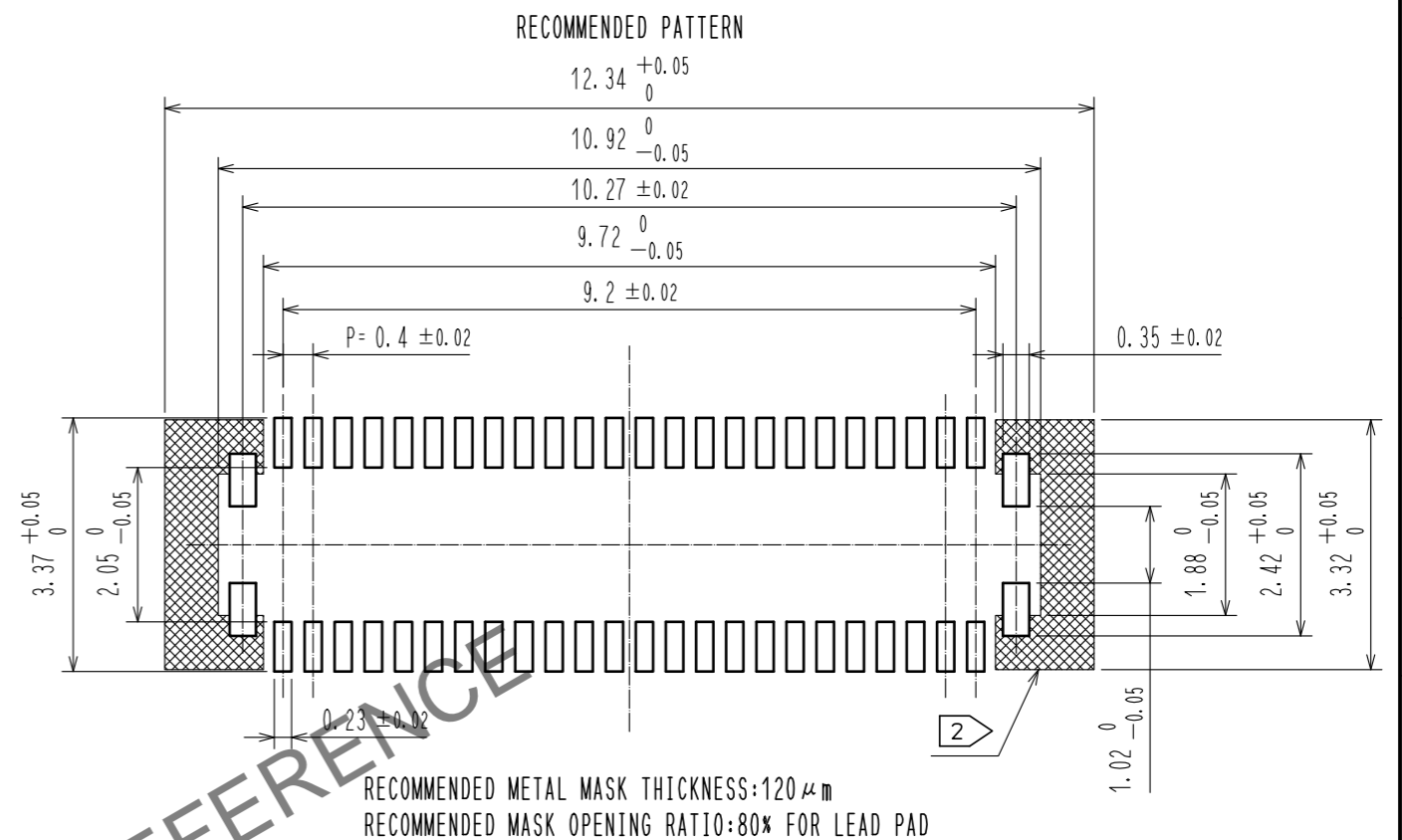




Apr.1.2024 Copyright 2024 HIROSE ELECTRIC CO., LTD. All Rights Reserved.  
In case of consideration for using Automotive equipment / device which demand high reliability, kindly contact our sales window correspondents.



- NOTES
1. ALL LEADS METAL FITTINGS CO-PLANARITY SHALL BE 0.1mm MAX.
  2. IS NON-CONDUCTIVE AREA.
  3. THERE IS A POSSIBILITY THAT THE RESIN WILL BE EXPOSED AT THIS AREA. BUT THIS WILL NOT AFFECT THE CONTACT RELIABILITY.



2	PHOSPHOR BRONZE	CONTACT AREA:GOLD 0.05μm MIN	7	PS	CLEAR(REINFORCEMENT COLLAR)
		SMT LEAD:GOLD 0.05μm MIN	6	PS	BLACK(PLASTIC REEL)
		UNDERPLATING:NICKEL 1μm MIN	5	POLYESTER	CLEAR(COVER TAPE)
	1	LCP	BLACK, UL94V-0	4	PS
			3	PHOSPHOR BRONZE	CONTACT AREA:GOLD 0.05μm MIN
					SMT LEAD:GOLD 0.05μm MIN
					UNDERPLATING:NICKEL 1μm MIN
NO. MATERIAL FINISH . REMARKS			NO. MATERIAL FINISH . REMARKS		

UNITS mm		SCALE 10 : 1		COUNT 2	DESCRIPTION OF REVISIONS DIS-H-00006346	DESIGNED PAN YIWEI	CHECKED YK. SATAKE	DATE 20200928
<div>HIROSE ELECTRIC CO., LTD.</div>					APPROVED :KH. IKEDA20130218	DRAWING NO. EDC3-349462-01		
					CHECED :AR. TAKAHASHI20130216			
					DESIGNED :TY. YAMASAKI20130216	CODE NO. CL684-4195-6-51		
					DRAWN :KR. AJITO20130216		 1/2	

Apr.1.2024 Copyright 2024 HIROSE ELECTRIC CO., LTD. All Rights Reserved.  
In case of consideration for using Automotive equipment / device which demand high reliability, kindly contact our sales window correspondents.

