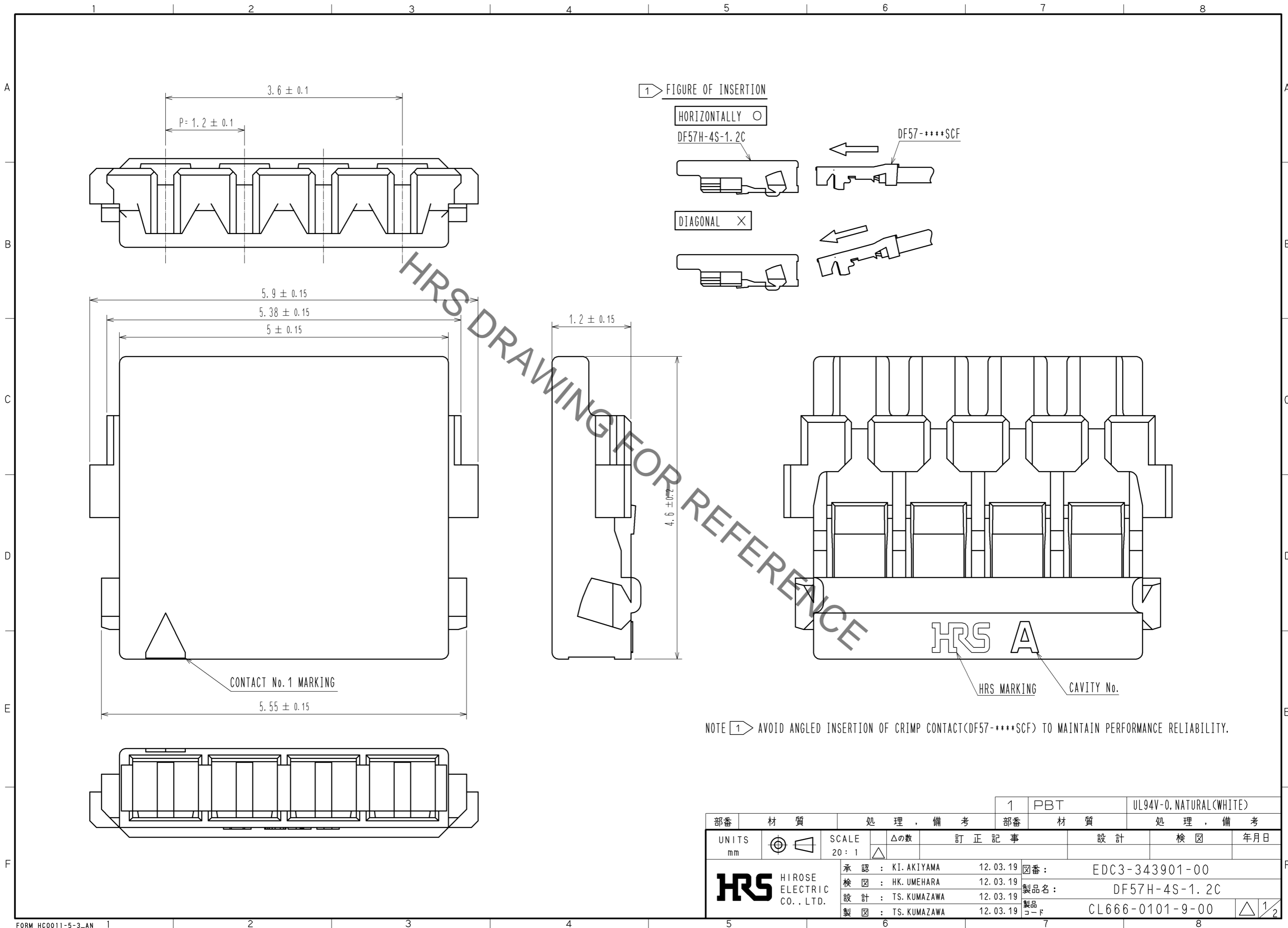


May.1.2022 Copyright 2022 HIROSE ELECTRIC CO., LTD. All Rights Reserved.  
In case of consideration for using Automotive equipment / device which demand high reliability, kindly contact our sales window correspondents.



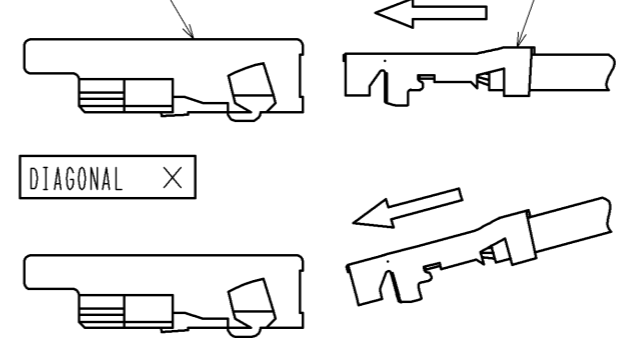
1) FIGURE OF INSERTION

HORIZONTAL ○

DF57H-4S-1.2C

DIAGONAL ×

DF57-\*\*\*\*SCF



CONTACT No. 1 MARKING

HRS A

HRS MARKING

CAVITY No.

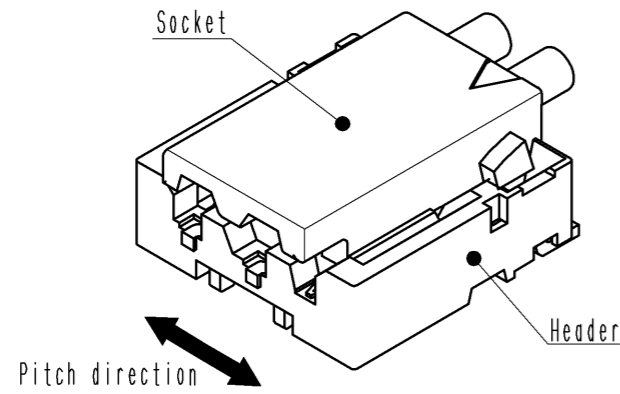
NOTE 1) AVOID ANGLED INSERTION OF CRIMP CONTACT(DF57-\*\*\*\*SCF) TO MAINTAIN PERFORMANCE RELIABILITY.

部番	材質	処 理 , 備 考	1	PBT	UL94V-0, NATURAL(WHITE)
UNITS mm		SCALE 20:1	△の数	訂 正 記 事	設 計
<b>HRS</b>	HIROSE ELECTRIC CO., LTD.	承認 : KI. AKIYAMA 検 査 : HK. UMEHARA 設 計 : TS. KUMAZAWA 製 図 : TS. KUMAZAWA	12.03.19 12.03.19 12.03.19 12.03.19	函 番 : 製品名 : 製品 コード	EDC3-343901-00 DF57H-4S-1.2C CL666-0101-9-00
					年 月 日

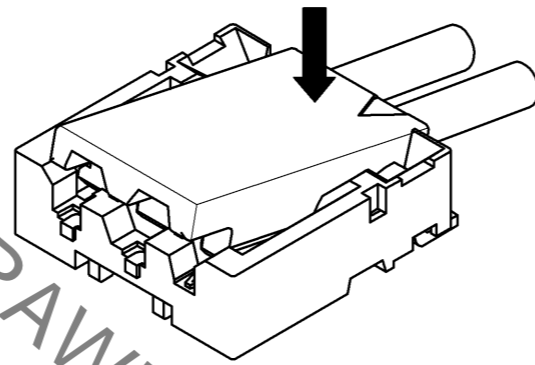
# DF57 Series Mating / Unmating Operation Instruction

## Mating

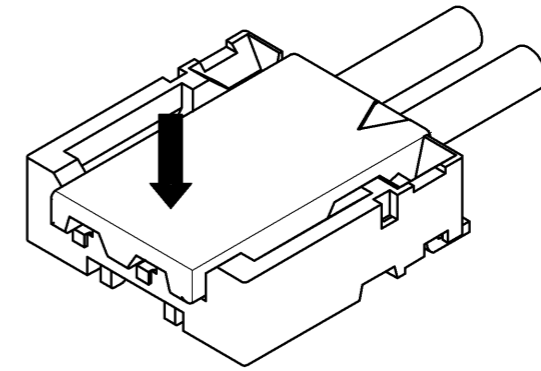
① By positioning the convexity of the socket sides to the header concavity, align the centers of the socket and the header in pitch direction.



② Slightly press the socket down at cable side to tilted angle.

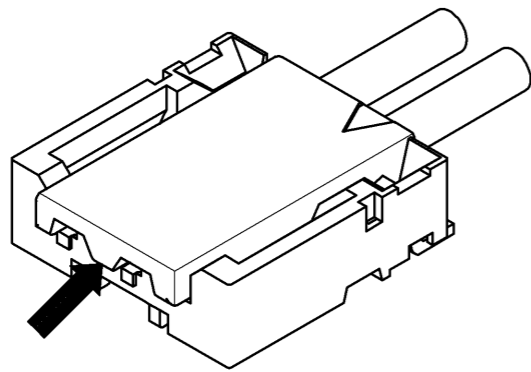


③ Press down at the lever side with stabilizing the cable side to insert. Mating completes.

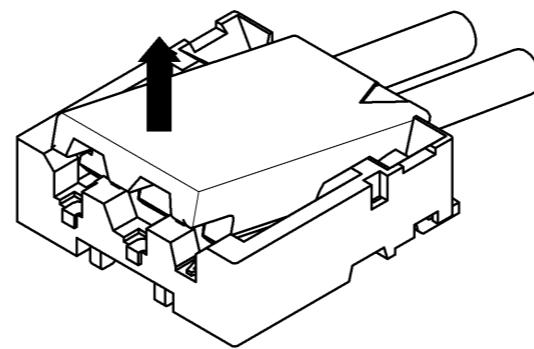


## Unmating

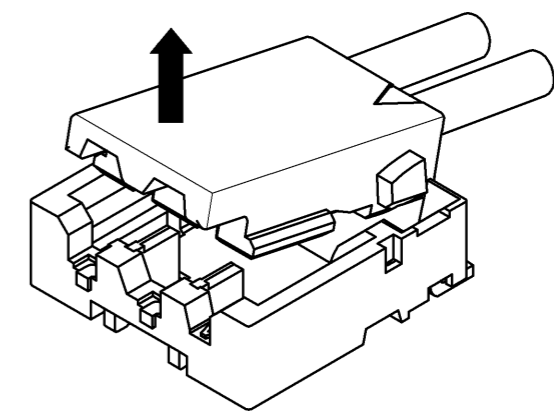
① Hook the lever with finger nail.



② Lift up to the upper direction and friction lock is released.



③ Lift up to the upper direction and positive lock is released. Removal completes.



HRS DRAWING FOR REFERENCE

<b>HRS</b>	DRAWING NO.	EDC3-343901-00	△ 2/2
	PART NO.	DF57H-4S-1.2C	
	CODE NO.	CL666-0101-9-00	

May.1.2022 Copyright 2022 HIROSE ELECTRIC CO., LTD. All Rights Reserved. In case of consideration for using Automotive equipment / device which demand high reliability, kindly contact our sales window correspondents.