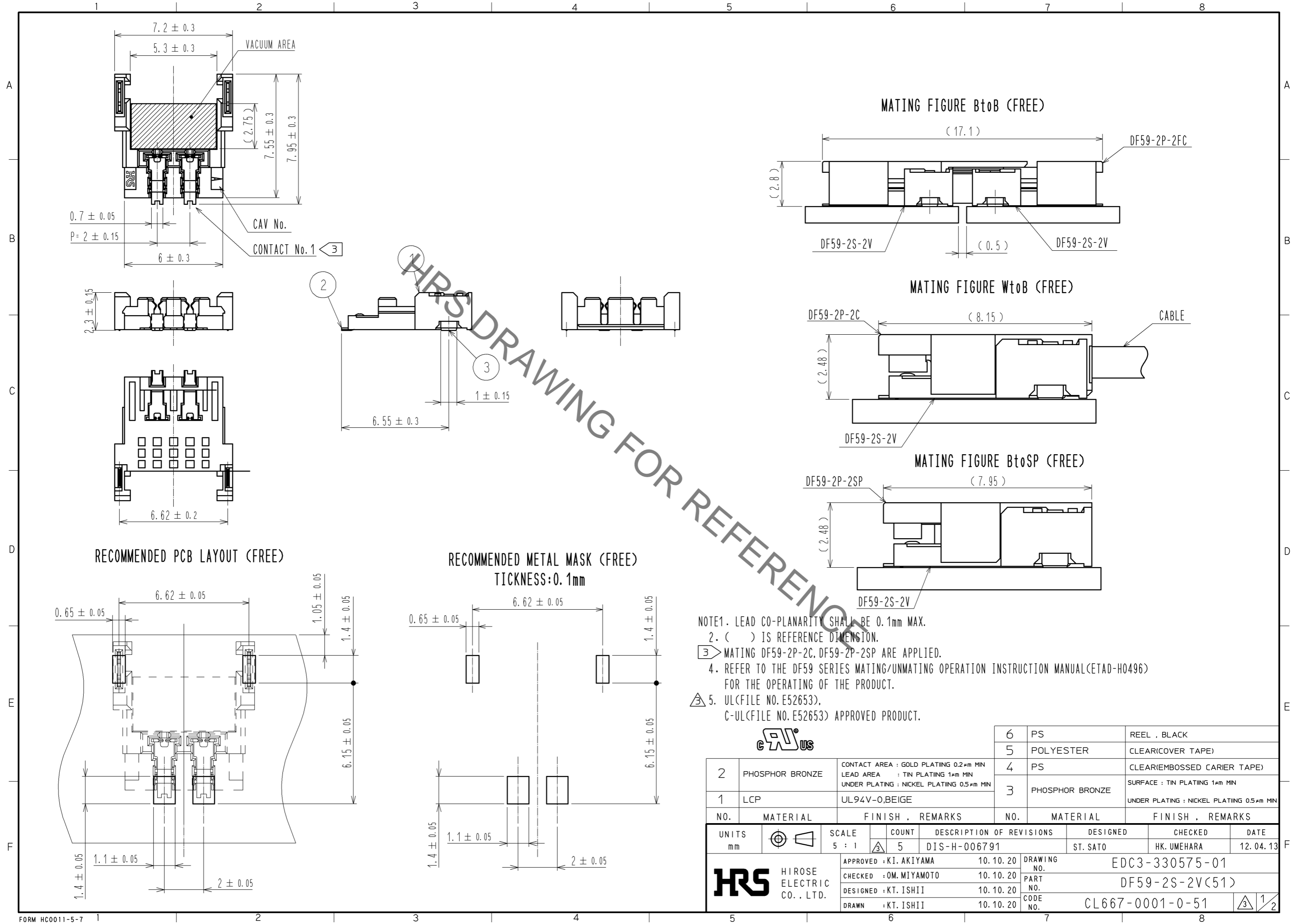


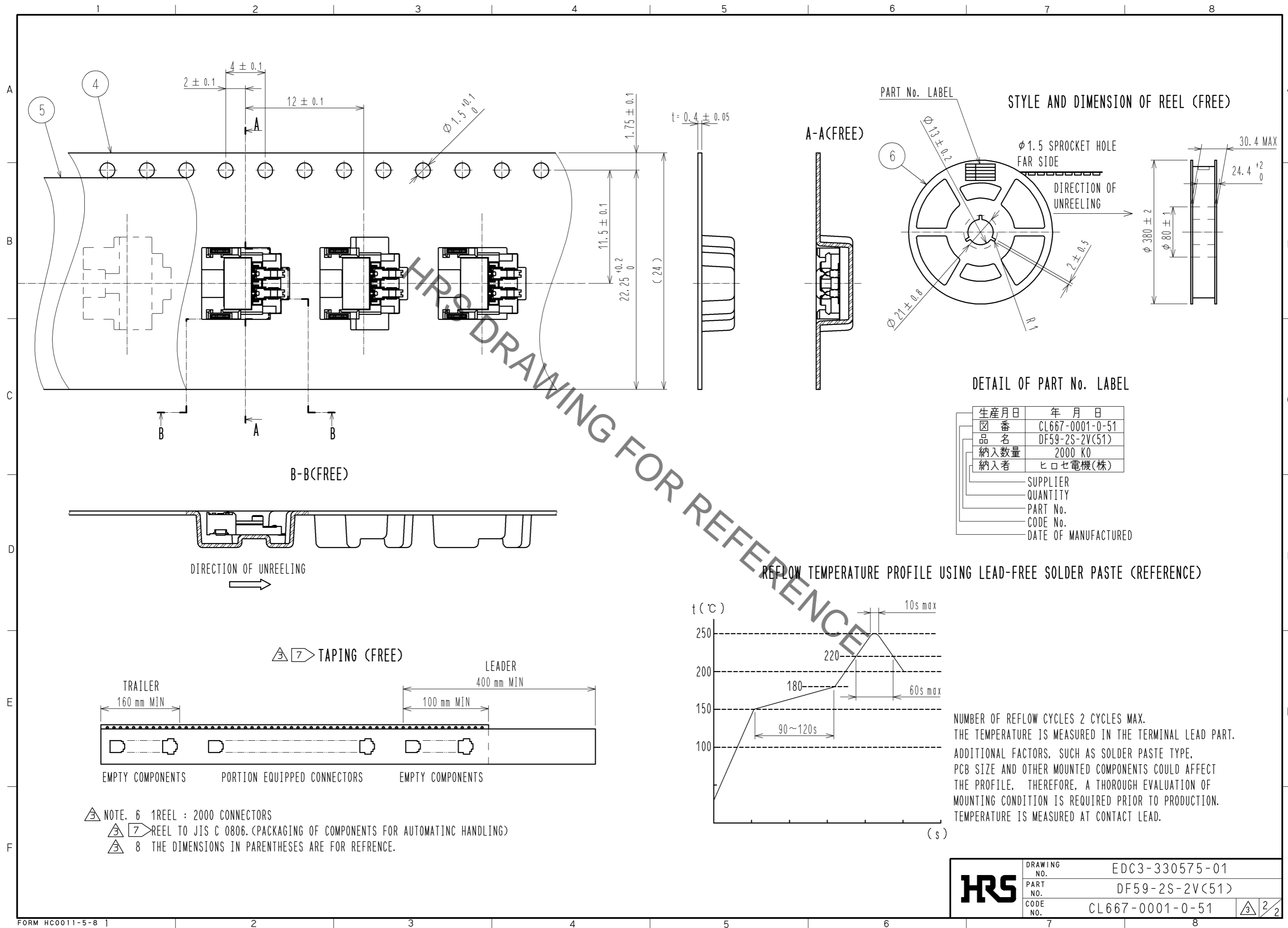
Aug.1.2019 Copyright 2019 HIROSE ELECTRIC CO., LTD. All Rights Reserved.  
In case of consideration for using Automotive equipment / device which demand high reliability, kindly contact our sales window correspondents.



- NOTE1. LEAD CO-PLANARITY SHALL BE 0.1mm MAX.  
 2. ( ) IS REFERENCE DIMENSION.  
 3. MATING DF59-2P-2C, DF59-2P-2SP ARE APPLIED.  
 4. REFER TO THE DF59 SERIES MATING/UNMATING OPERATION INSTRUCTION MANUAL(ETAD-H0496) FOR THE OPERATING OF THE PRODUCT.  
 5. UL(FILE NO. E52653).  
 C-UL(FILE NO. E52653) APPROVED PRODUCT.

		6	PS	REEL , BLACK
		5	POLYESTER	CLEAR(COVER TAPE)
		4	PS	CLEAR(EMBOSSED CARRIER TAPE)
		3	PHOSPHOR BRONZE	SURFACE : TIN PLATING 1μm MIN UNDER PLATING : NICKEL PLATING 0.5μm MIN
2	PHOSPHOR BRONZE	CONTACT AREA : GOLD PLATING 0.2μm MIN LEAD AREA : TIN PLATING 1μm MIN UNDER PLATING : NICKEL PLATING 0.5μm MIN		
1	LCP	UL94V-0,BEIGE		
NO.	MATERIAL	FINISH	REMARKS	
UNITS		SCALE	COUNT	DESCRIPTION OF REVISIONS
mm		5 : 1	5	DIS-H-006791
DESIGNED		ST. SATO	CHECKED	HK. UMEHARA
DATE		12. 04. 13		
APPROVED : KI. AKIYAMA		10. 10. 20	DRAWING NO. EDC3-330575-01	
CHECKED : OM. MIYAMOTO		10. 10. 20	PART NO. DF59-2S-2V(51)	
DESIGNED : KT. ISHII		10. 10. 20	CODE NO. CL667-0001-0-51	
DRAWN : KT. ISHII		10. 10. 20	1/2	

Aug.1.2019 Copyright 2019 HIROSE ELECTRIC CO., LTD. All Rights Reserved.  
 In case of consideration for using Automotive equipment / device which demand high reliability, kindly contact our sales window correspondents.



<b>HRS</b>	DRAWING NO.	EDC3-330575-01
	PART NO.	DF59-2S-2V(51)
	CODE NO.	CL667-0001-0-51
		2/2